



Z-MAX™ 6 UTP System

Siemon's Z-MAX 6 System is a groundbreaking, end-to-end category 6 UTP solution which leverages many unique features from the 10Gb/s Z-MAX 6A platform. Through the zero-cross lacing module and innovative Z-TOOL™, Z-MAX 6 provides the fastest, easiest, most reliable termination process in the industry - taking as little as 60 seconds including cable preparation.

Z-MAX 6 provides best-in-class aesthetics, usability and density. Offering up to 48 ports in just 1U, the Z-MAX patch panel helps conserve valuable rack and cabinet space. And, its quick-snap outlet insertion process is a perfect compliment to Z-MAX 6 trunking cable assemblies - significantly accelerating installation.

Z-MAX 6 UTP supports two performance options:

System 6™ combines Z-MAX 6 outlets with System 6 UTP cable and Siemon category 6 BladePatch® and MC® patch cords to provide a system which exceeds category 6 / class E performance specifications. Z-MAX outlets may also be combined with HD6 patch panels when a traditional style of panel is desired.

Z-MAX Premium 6™ utilizes the higher performing Premium 6 UTP cable and Siemon category 6 BladePatch and MC patch cords to leverage the exceptional performance of the Z-MAX 6 outlet. The result is channel performance that provides significant margin to category 6 / class E standards.

Z-MAX™ 6 UTP Outlets

The Z-MAX 6 UTP outlet provides performance far exceeding category 6 connecting hardware performance specifications. It's compact design is ideal for high density applications.

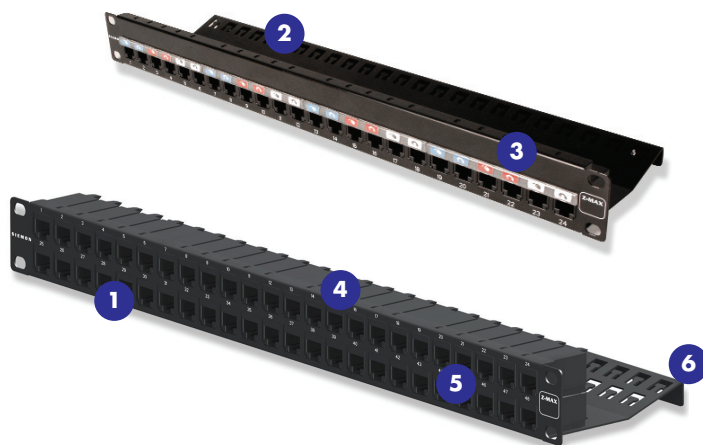


- 1 **Fastest Termination Time** – Zero-Cross™ termination module and 2-step Z-TOOL™ termination process combine for best-in-class termination time
- 2 **High-Visibility Icon System** – Printed icons allow designation for voice / data applications and also provide an additional color coding option
- 3 **Compact** – Slim and side-stackable for high-density applications. Supports “pass-thru” feature to mount from the front or rear of a faceplate or patch panel

- 4 **Guided Termination Features** – Lacing channels guide correct conductor placement while 2-sided color-coding provide wiring verification before and after lacing
- 5 **Robust Hinged Cable Retention** – Hinged clip provides cable jacket strain relief for multiple cable diameters
- 6 **Mounting Flexibility** – A single hybrid outlet supports both angled and flat mounting orientations

Z-MAX 6 UTP Patch Panels

Z-MAX patch panels offer outstanding usability and aesthetics in a high-density, modular solution. The Z-MAX UTP panels provide rapid and reliable installation by accelerating outlet mounting, making them ideal for use with trunking cable assemblies. The integrated cable management enhances durability and simplifies tie-down operations. The panels are offered as kits, with included panel outlets to simplify ordering as well as empty panels for use with panel outlets and trunking cable assemblies



- 1 **High Density** — Provides 48 ports in just 1U while still meeting strict performance parameters
- 2 **Installation Friendly** — Quick-Snap feature allows panel outlets to quickly be snapped into place
- 3 **Port Identification** — High visibility magnifying labeling system enables quick identification of outlets

- 4 **Durable** — Lightweight, high strength steel with black finish and scratch/fade resistant port marking
- 5 **Aesthetics** - The Z-MAX panel provides a clean front surface to improve the installation appearance
- 6 **Cable Management** - Integrated t-shaped tie-down keyholes allow rapid securing of cables

MAX® Patch Panels

MAX patch panels provide a flexible solution which enables Z-MAX hybrid outlets to be mounted along with the full line of MAX outlets to support a wide range of multi-media applications.

HD® 6 Panels

The HD 6 patch panels feature integrated outlets to provide a robust solution with fewer installation steps. The HD panel supports System 6 performance levels.



Bladepatch® 6 Modular Cords

This innovative line of category 6, RJ-45 modular patch cords with patented push-pull latch is designed for easier finger access high-density environments

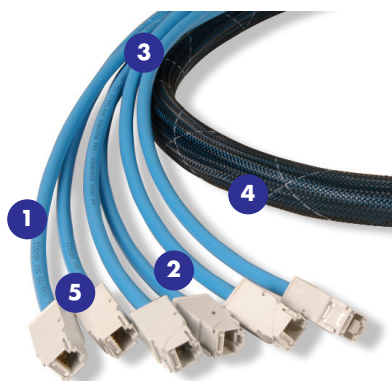


MC® 6 Modular Cords

A high-performance solution for all patching applications, MC modular patch cords meet or exceed all category 6/class E requirements.

Z-MAX 6 UTP Preterminated Trunking Cable Assemblies

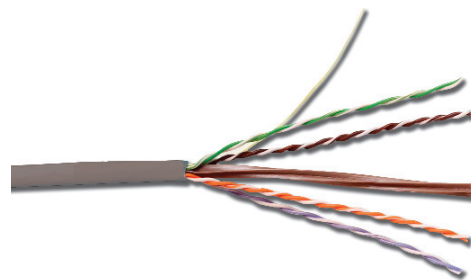
Siemon's Z-MAX 6 UTP trunking cable assemblies provide an easily installed and cost effective alternative to individual field-terminated channels. These assemblies combine factory terminated and tested Z-MAX outlets with Siemon's System 6 or Premium 6 cable in a high-performance modular cable assembly. Z-MAX 6 UTP trunking cable assemblies are designed to simplify installation in data centers or other high-density high-performance environments.



- 1 Proper Orientation** — Each leg is cut and labeled for proper outlet orientation
- 2 Factory Terminated and Tested** — Utilizes Z-MAX 6 UTP outlets, factory terminated and tested for high performance
- 3 Identification** — Each cable assembly is coded with a unique identification number for administrative purposes
- 4 Siemon Category 6 UTP Cable** — Utilizes high quality Siemon category 6 UTP cable
- 5 Breakout Kit** — Unique breakout kit creates optimal cable orientation and limits cable crossing

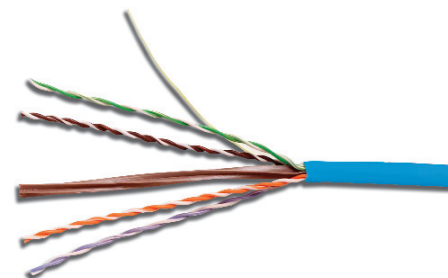
Premium 6™ Cable

Siemon's Premium 6 cable provides significant additional headroom above all category 6 / class E specifications. When used with Z-MAX 6 UTP connectivity, Premium 6 cable provides superior electrical performance for robust applications support.



System 6™ Cable

Siemon's System 6 cable provides headroom above all TIA/EIA and ISO/IEC category 6 / class E transmission performance specifications. Combine Z-MAX 6 UTP connectivity with System 6 cable to create an exceptional category 6 cabling system.



Ordering Information

Z-MAX™ 6 UTP OUTLETS

Z6-(X)(XX)UTP Z-MAX 6 outlet, T568A/B

Bezel Color	
01 - Black	06 - Blue
02 - White	07 - Green
03 - Red	09 - Orange
04 - Grey	20 - Ivory
05 - Yellow	80 - Light Ivory

Mounting Style
(Blank) - Hybrid Flat/Angled
K - Keystone



Z6-PZ-MAX 6 UTP panel outlet

Outlet terminates UTP cable constructions with 22 – 26 AWG (0.64 – 0.51mm) solid and 26 AWG (0.48mm) stranded conductors, with up to 0.60mm diameter conductors and up to 1.48mm diameter over insulation.

Add "B" to end of part number for bulk project pack of 100 outlets

Z-MAX™ 6 UTP PANELS

Z6-PNL-24K	24-Port, 1U, Flat Z-MAX 6 UTP Patch Panel Kit, Black (includes 24 Z-MAX Panel Outlets)
Z6-PNLA-24K	24-Port, 1U, Angled, Z-MAX 6 UTP Patch Panel Kit, Black (includes 24 Z-MAX Panel Outlets)
Z6-PNL-48K*	48-Port, 1U, Flat, Z-MAX 6 UTP Patch Panel Kit, Black (includes 48 Z-MAX Panel Outlets)
Z6-PNLA-48K*	48-Port, 1U, Angled, Z-MAX 6 UTP Patch Panel Kit, Black (includes 48 Z-MAX Panel Outlets)

Note: Empty panels are also available for use with Z-MAX 6 preterminated trunking cable assemblies

Z-MAX UTP panels are designed for use with Z-MAX UTP panel outlets only

* Contact customer service for availability

MAX® PATCH PANELS

MX-PNL(X)-(XX)MAX Modular Patch Panel, Black

Ports	
16 - 16-port, 1U	
24 - 24-port, 1U	
48 - 48-port, 2U	
72 - 72-port, 2U	

Mounting Style
(Blank) - Flat
A - Angled (24- and 48-port only)

HD® 6 PATCH PANELS

Panels include rear cable manager, cable ties and mounting hardware.

HD6-24	24-port panel, 1 U
HD6-48	48-port panel, 2 U

BLADEPATCH® 6 UTP

BP6-(XX)-(XX) Double-ended, RJ-45 modular patch cord with push pull latching design, color matching cord/boot, T568A/B.

Cord Length:

03 -	0.9m (3 ft.)
05 -	1.5m (5 ft.)
07 -	2.1m (7 ft.)
10 -	3.1m (10 ft.)
15 -	4.6m (15 ft.)
20 -	6.1m (20 ft.)

Color:

01 - Black
02 - White
03 - Red
04 - Gray
05 - Yellow
06 - Blue
07 - Green

MC® 6 UTP MODULAR CORDS

MC6-8-T-(XX)-(XX) Double-ended, 4-pair UTP stranded modular patch cord, T568A/B, color matching jacket/boot.

Cord Length:

03 -	0.9m (3 ft.)
05 -	1.5m (5 ft.)
07 -	2.1m (7 ft.)
10 -	3.1m (10 ft.)
15 -	4.6m (15 ft.)
20 -	6.1m (20 ft.)

Color:

01 - Black
02 - White
03 - Red
04 - Gray
05 - Yellow
06 - Blue
07 - Green

Z-MAX 6 UTP TRUNKING CABLE ASSEMBLIES

T(X)(X)D6E-(XXXX)(XXX)F 6 Leg Solid Cable Double-Ended Trunking Cable Assembly

System	Length
C - System 6 UTP	009-295 - Indicate length in feet (increments of 3 feet)
P - Premium 6 UTP	
Cable Jacket	Connector Types
R - Riser rated (CMR, CSA FT6), blue jacket	POPO - Z-MAX panel outlets for use with Z-MAX panels
P - Plenum rated (CMP, CSA, FT4), blue jacket	H1H1 - Z-MAX hybrid flat/angled outlet
	POD1 - Z-MAX panel outlets to MC plugs
	H1D1 - Z-MAX hybrid flat/angled outlet to MC plugs

Standard wiring is T568B. Other lengths and configurations available upon request.

PREMIUM 6™ and SYSTEM 6™ UTP 4-PAIR CABLE

9C6(X)4-E(X)-(XX)-(XXX)

Cable Type:

P - Plenum (Type FT6)
R - Riser (Type FT4)

Cable Length:

RBA - 1000 ft. Reel-in-box (Premium 6 only)
RXA - 1000 ft. Reelex (System 6 only)

Cable Performance

4 - Premium 6
3 - System 6

Jacket Color:

02 - White	06 - Blue
04 - Gray	07 - Green
05 - Yellow	

The Americas

Watertown, CT USA
Phone (1) 860 945 4200 US
Phone (1) 888 425 6165 Canada

Europe/Middle East/Africa

Surrey, England
Phone (44) 0 1932 571771

Asia/Pacific

Shanghai, P.R. China
Phone (86) 21 6390 6778

Central & South America

Bogota, Colombia
Phone (571) 317 2121

