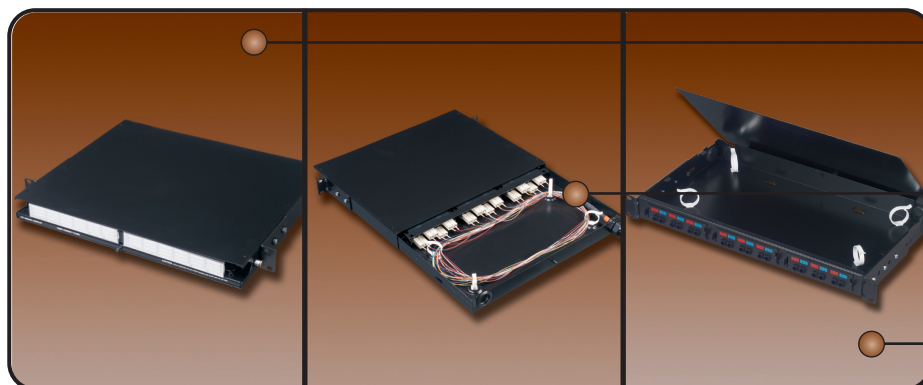
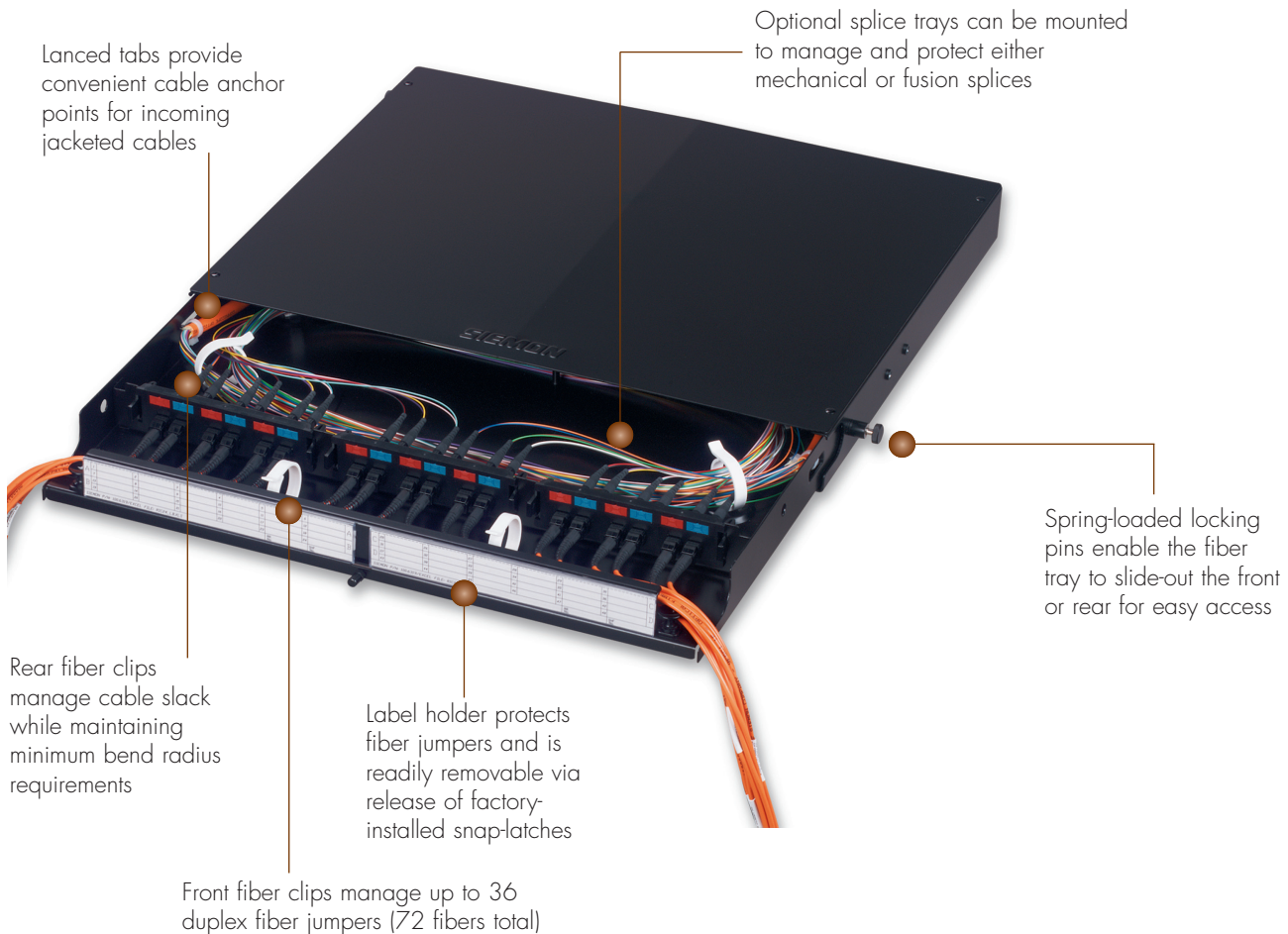


# FIBER CONNECT PANEL (FCP3)

The Fiber Connect Panel (FCP3-DWR & FCP3-RACK) rack-mounted enclosures economically connect, protect, and manage up to 72 fibers within one Rack Mount Space (RMS). It accepts Siemon's Quick-Pack™ adapter plates with patented single-finger access. The FCP3-DWR makes access to the connections easy via a tray that slides out the front or the rear.

**PATENTED**

**FIBER PRODUCTS**



FCP3 enclosures accommodate up to 72 fibers in only 1 RMS on a 19 in. rack

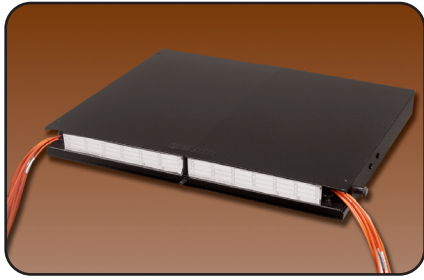
The FCP3-DWR (drawer version) features a tray that slides out from the front or rear, providing easy access to fiber connections and allowing removal of the entire tray to be placed on a worktable for more convenient termination

The FCP3-RACK has a fixed tray and can be mounted to a rack in a protruding, flush or recessed position

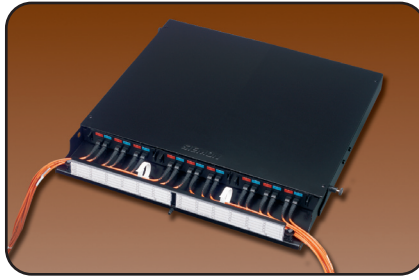
# PRODUCT INFORMATION

## FIBER PRODUCTS

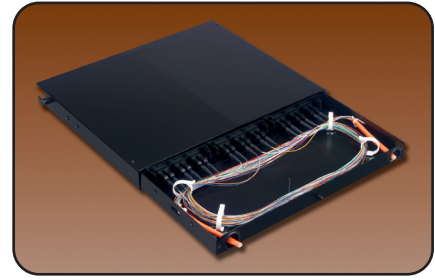
### FCP3-DWR



Front (closed)



Front (open to 1st stop)

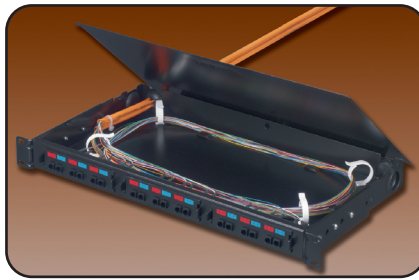


Rear (open to 2nd stop)

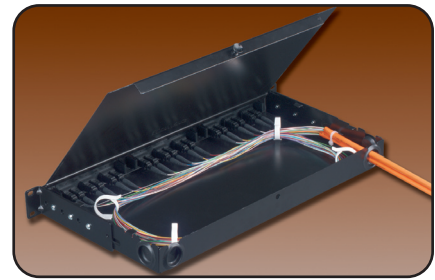
### FCP3-RACK



Front (closed)



Front (open)



Rear (open)

FCP3-DWR.....6- to 72-port Fiber Connect Panel with sliding tray. Includes mounting brackets, housing/tray, fiber managers and grommets label holders, and labels, black

FCP3-RACK.....6- to 72-port Fiber Connect Panel with fixed tray. Includes mounting brackets, housing/cover, fiber managers and grommets, black

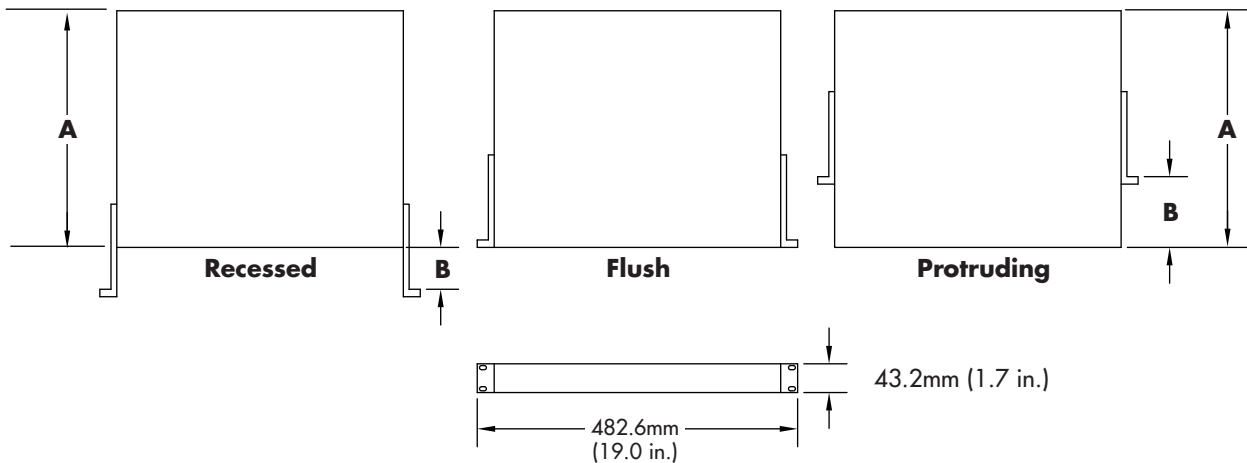
Splice trays available separately. See page 4.

### FCP3-DWR

Dimension A	Position Options Relative to Front of Rack	
	Dimension B	
	Protruding	Protruding
355.6mm (14.0 in.)	71.1mm (2.8 in.)	106.7mm (4.2 in.)

### FCP3-RACK

Dimension A	Position Options Relative to Front of Rack		
	Dimension B		
	Recessed	Flush	Protruding
241.3mm (9.5 in.)	38.1mm (1.5 in.)	0	38.1mm (1.5 in.)



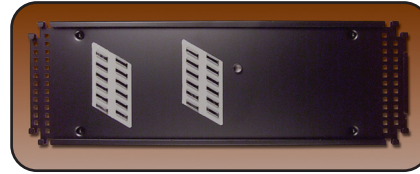
# ORDERING INFORMATION

## FIBER PRODUCTS

### Fiber Splice Trays:

These aluminum trays can be ordered with either fusion, mechanical or fusion with sleeve splice holders and come with a clear, snap-on polycarbonate cover. The standard tray holds up to 24 splices. For tight area, a mini-tray is available which accommodates up to 12 splices. Trays can be stacked for high-density applications.

- TRAY-1 ..... Standard fiber splice tray for up to 24 bare fusion splices
- TRAY-3 ..... Standard fiber splice tray for up to 24 fusion splices with sleeve protection
- TRAY-M-1 ..... Mini fiber splice tray for up to 12 bare fusion splices
- TRAY-M-3 ..... Mini splice tray for up to 12 fusion splices with sleeve protection



TRAY-3  
height: 103mm (4.07 in.),  
width: 298mm (11.75 in.),  
depth: 8.13mm (0.32 in.)

*Fusion with sleeve splice holders can accommodate sleeve diameters from 1.5mm (0.059 in.) to 3mm (0.117 in.). Standard fusion splice holders are designed for 900 micron buffered fibers or 250 micron coated fibers*

### Compression Fittings:

Compression fittings are utilized as an enhanced method for securing cables to FCP3 fiber enclosures. Acme threads on the body prevent skipping allowing for faster installations of lock-nuts.

- CF-(XX) ..... Compression Fitting
- Use (XX) to specify size:
- 40 = 5.8 - 13.9mm (0.23 - 0.55 in.),
- 51 = 11.4 - 18mm (0.45 - 0.71 in.),
- 60 = 15.0 - 25.4mm (0.59 - 1.00 in.)



*Because we continuously improve our products, Siemon reserves the right to change specifications and availability without prior notice.*

*Quick-Pack™, LightSystem®, LightSpeed® and XGLO® are trademarks of Siemon*

### For related product information request Spec Sheet(s):

- SC and ST Fiber Connectors (PROD-SS-SFC)
- LightSystem® Fiber Jumpers & Pigtails (PROD-SS-FJ1)
- XGLO™ Fiber Jumper & Pigtails (PROD-SS-LOF)
- LC Connectors Products (PROD-SS-LCC)
- MT-RJ connectors (PROD-SS-MTR)
- LightSpeed® Fiber Termination Kit (PROD-SS-FTK)

**The Americas**  
Watertown, CT USA  
Phone (1) 860 945 4200

**Europe/Middle East/Africa**  
Surrey, England  
Phone (44) 0 1932 571771

**Asia/Pacific**  
Shanghai, P.R. China  
Phone (86) 21 5385 0303

**Japan**  
Tokyo, Japan  
Phone (03) 5405 7650

WWW.SIEMON.COM

ISO 9001  
CERTIFIED

ISO 14001  
CERTIFIED



# PRODUCT INFORMATION

FIBER PRODUCTS

## Flat Quick-Pack™ Adapter Plates:

Siemon Quick-Pack adapter plates feature a patented integrated latch, which provides single-finger access to fiber even in fully populated enclosures. Choose from our wide variety of singlemode and multimode plate options.

RIC-F-SC6-01 . . . . .  
3 duplex SC adapters  
(6 fibers)



RIC-F-SC8-01 . . . . .  
4 duplex SC adapters  
(8 fibers)



RIC-F-SC12-01 . . . . .  
6 duplex SC adapters  
(12 fibers)



RIC-F-SA6-01 . . . . .  
3 duplex ST adapters  
(6 fibers)



RIC-F-SA8-01 . . . . .  
4 duplex ST adapters  
(8 fibers)



RIC-F-SA12-01 . . . . .  
6 duplex ST adapters  
(12 fibers)  
*Only recommended  
for push-pull design  
connectors due to access  
constraints*



RIC-F-LC12-01C . . . . .  
6 duplex LC adapters  
(12 fibers), beige  
adapters



RIC-F-LC16-01C . . . . .  
4 quad LC adapters  
(16 fibers), beige  
adapters



RIC-F-LC24-01C . . . . .  
6 quad LC adapters  
(24 fibers), beige  
adapters



RIC-F-LCU12-01C . . . . .  
6 duplex LC adapters  
(12 fibers), blue adapters  
*(not shown)*

RIC-F-LCU16-01C . . . . .  
4 quad LC adapters  
(16 fibers), blue adapters  
*(not shown)*

RIC-F-LCU24-01C . . . . .  
6 quad LC adapters  
(24 fibers), blue adapters  
*(not shown)*

RIC-F-AC6-01 . . . . .  
3 duplex ST-SC adapters  
(6 fibers, front side = SC)



RIC-F-FC6-01 . . . . .  
6 FC adapters (6 fibers)



RIC-F-BLNK-01 . . . . .  
Blank adapter plate



RIC-F-AC8-01 . . . . .  
4 duplex ST-SC adapters  
(8 fibers, front side = SC)  
*(not shown)*

RIC-F-FC8-01 . . . . .  
8 FC adapters (8 fibers)  
*(not shown)*

Each adapter plate with icon pockets includes red, blue, black, and clear icons with paper labels. All SC and ST adapters are "universal" to support multimode and singlemode

Maximum Fiber Capacity		
# Fibers per Quick-Pack	Adapter Options	FCP3
6	ST, SC	18
8	ST, SC	24
12	ST, SC, MT-RJ, LC	36
16	MT-RJ, LC	48
24	MT-RJ, LC	72

Maximum Splicing Capacity	
Splice Type	FCP3
Fusion	72