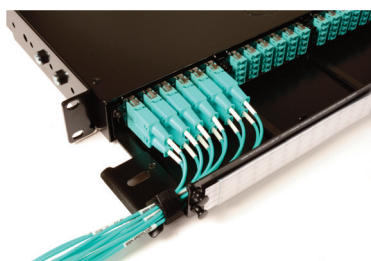
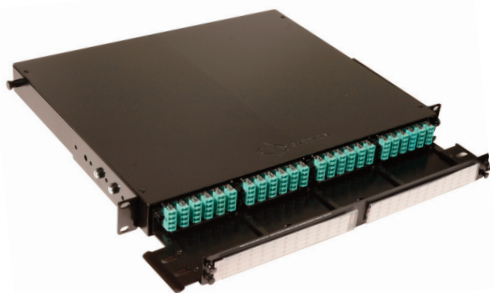


High Density 1U Fiber Connect Panel System

High-Density FCP3 Fiber Connect Panel

Economically connect, protect and manage up to 96 fibers within 1 rack mount unit. Designed to integrate with high-density FCP3 fiber Plug and Play modules.



High Density

Supports up to 96 fibers in just 1U

Enhanced Accessibility

Fiber drawer slides to the front and rear for maximum access to fiber connections

Bend Radius Management

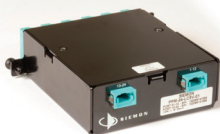
Recessed modules provide a high-capacity jumper management zone that helps maintain proper fiber bend radius

Part #	Description
FCP3-DWR-4A	High-density FCP3 Fiber Enclosure, Black, 1U

Note: Maximum fusion splice capacity is 72 fibers

High-Density Combo Panel FCP3 Plug and Play Modules and Adapter Plates

Siemon LC to MTP® FCP3 Plug and Play modules and LC adapter plates are designed for simple, snap-in deployment within the high density FCP3 fiber connect panel. Providing up to 24 LC fibers per module, the factory terminated and tested modules are available in OM3 and OM4 multimode and singlemode configurations. The LC adapter plates provide a simple way to integrate traditional LC to LC connectivity within the ultra-high density FCP3 enclosure.



High Density

Modules provide up to 24 LC fibers per module, supporting up to 96 ports within the 1U FCP3 fiber connect panel

Fast Deployment

Snap-in mounting and multi-fiber MTP connectivity offers ultra-fast deployment of high-performance fiber channels

Compact Housing

Reduces mounting depth for greater cable management space within enclosures

Optimized Adapter Spacing

Enables easy finger access to fiber jumper connector latches in high density patching environments

Multimode and Singlemode Modules

Utilizes zirconia ceramic sleeves for optimum performance

High Density 1U Fiber Connect Panel System

Ordering Information:



PPM-F-LC(X)(XX)-01(X) High-density FCP3 LC Adapter Plates, Black

Adapter Color
Blank = Beige MM
Q = Aqua MM
U = Blue SM

Performance
Blank = Standard
L = Low Loss

Fiber Count
12 = 12 Fiber
24 = 24 Fiber



PPM-(XX)-LC(XX)-01(X) High-density FCP3 LC to MTP Modules, Black

Fiber Count
12 = 12 Fiber
24 = 24 Fiber

Fiber Type
5L = OM3, XGLO 300 50/125 Multimode aqua adapters
5V = OM4, XGLO 550 50/125 Multimode aqua adapters
SM = OS1/OS2, Singlemode blue LC adapters

Performance
Blank = Standard
L = Low Loss



PPM-F-MP(XX)-01-(X) High-density FCP3 MTP Adapter Plates, Black

Fiber Count
12 = 12 Fiber
24 = 24 Fiber
48 = 48 Fiber
72 = 72 Fiber
96 = 96 Fiber

Adapter Color/Key Orientation
Q = Aqua Adapter - Opposed
B = Gray Adapter - Aligned
Blank = Black Adapter - Opposed



PPM-BLNK. Blank Adapter Plate, Black

PERFORMANCE SPECIFICATIONS (STANDARD)

Fiber Type		MAX Insertion (db)		Min. Return Loss (db)		Performance Class
		MTP	LC	MTP	LC	
5L-MM	50/125 10G (OM3)	0.40	0.25	20	30	XGLO™ 300
5V-MM	50/125 10G (OM4)	0.40	0.25	20	30	XGLO™ 550
SM-LWP	SM (OS2)	0.60	0.40	60	55	XGLO™

PERFORMANCE SPECIFICATIONS (LOW LOSS)

Fiber Type		MAX Insertion (db)		Min. Return Loss (db)		Performance Class
		MTP	LC	MTP	LC	
5L-MM	50/125 10G (OM3)	0.20	0.15	20	30	XGLO™ 300
5V-MM	50/125 10G (OM4)	0.20	0.15	20	30	XGLO™ 550

Because we continuously improve our products, Siemon reserves the right to change specifications and availability without prior notice.

For additional resource information:
 Visit our web site at www.siemon.com

**Worldwide Headquarters
 North America**
 Watertown, CT USA
 Phone (1) 860 945 4200 US
 Phone (1) 888 425 6165

**Regional Headquarters
 EMEA**
 Europe/Middle East/Africa
 Surrey, England
 Phone (44) 0 1932 571771

**Regional Headquarters
 Asia/Pacific**
 Shanghai, P.R. China
 Phone (86) 21 5385 0303

**Regional Headquarters
 Latin America**
 Bogota, Colombia
 Phone (571) 657 1950/51/52