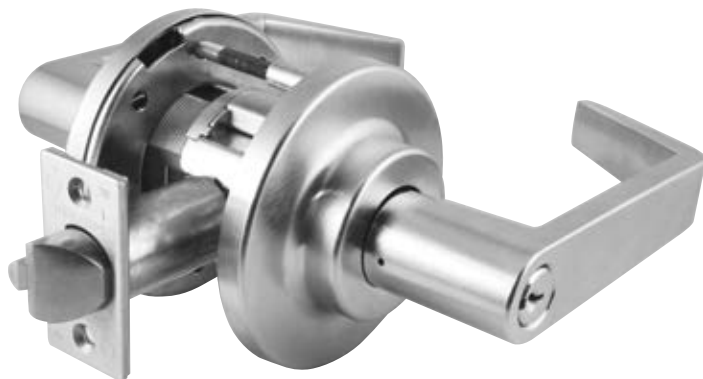


RCI Locksets



C800 Series Grade 1 Heavy-Duty Cylindrical Locksets

Provides exceptional security, enhanced aesthetics and rugged dependability.



Energy
290mA @ 12VDC
145mA @ 24VDC



Strength
ANSI/BHMA A156.2



Warranty
2 Year Limited Warranty



Mode
Fail-Safe & Fail-Secure
Options Available



Fire-Rated
3-Hour Fire-Rated



Door Type
Designed For Wood
And Hollow Metal
Doors

- Easy to install in all swinging doors with ANSI/BHMA Standard A156.115 preparations for cylindrical locks
- Designed for wood and hollow metal doors
- Fail-safe (EL) and fail-secure (EU) options available
- Easily adjustable to accommodate doors from 1-3/4"–2-1/4" thick without spacers (1-3/8"–1-5/8" with spacers PC8DS1). Consult the factory for other thicknesses
- Non-handed for simple installation (excluding LF or LV handed levers)
- Lock is through-bolted for additional strength and security
- Cast stainless steel latch retractor with roller bearings for exceptionally smooth operation and superior strength and durability
- Lock chassis constructed of steel, stainless steel and zinc components for superior strength and corrosion resistance
- Stainless steel latch bolt for superior strength
- Auxiliary deadlocking latch bolt for strength and durability
- Premium PVD (physical vapor deposition) finishes for consistent durable color on 605, 606, 612, 613 and 619
- Available in: 24VDC (145mA) & 12VDC (290mA)
- Request-to-exit signaling switch: 250VAC, 1A, 22AWG wire leads on lever locks
- Certified to ANSI/BHMA standard A156.2, Series 4000 Grade 1
- Tested to 3.5-million cycles by an independent laboratory
- Meets A117.1 accessibility code and ADA requirements for barrier-free accessibility
- UL/cUL – UL 10C Positive Pressure
- All C800 Series locks are Listed 3-hour fire rated
- Locks with 1/2" throw latch bolts are listed for A label and lesser class doors, 4'0" x 8'0" maximum per leaf
- California State Reference Code (formerly title 19, California State Fire Marshal standard), all levers with returns, return to within 1/2" (12 mm) of door face



RCI Locksets

How To Order

Function		Cylinder Type ¹		Finish ²		Latch Bolts ⁵		Strike Options		Lip Length		Keying Options ⁵	
Fail-Secure	80EU	S	-Sargent 10 Line KIL (less cylinder)	626	-Satin Chrome (Standard)								
		D	-Conventional Cylinder	625	-Bright Chrome								
		L	-Less Cylinder	619PVD	-Satin Nickel								
		C	-SFIC	613PVD	-Dark Oxidized Satin Bronze								
		J	-Less SFIC	612PVD	-Satin Bronze								
		T	-Temporary SFIC	606PVD	-Satin Brass								
Fail-Safe	80EL	R	-Schlage FSIC (less core)	605PVD	-Bright Brass	AM	-Antimicrobial Coating ³						
		C8								5001	1316		
Request to Exit		RX											
		LR	C	-3-1/2" Dia.	5	-12VDC	TX	RH	-Right Hand	134	-1-3/4"-2-1/4"		
		LC	D	-3-1/2" Dia. stamped, LOCK	8	-24VDC	Security Screws	LH	-Left Hand	138	-1-3/8"-1-5/8"		
		LG	E	-3-1/2" Dia. stepped rose									
		LT	F	-3-1/2" Dia. stepped rose stamped, LOCK									
		LF ⁶		Rose Design									
		LV ⁶											
		Lever⁵											

¹Consult factory for other cylinder options.
²For split finishes, consult factory. Specify hand.
³Available on 626 finish only. Consult factory for other finishes.
⁴Door Thickness Range: 1-3/4"-2-1/4" without spacers, 1-3/8"-1-5/8" with spacers.
⁵See next page for options
⁶Specify handing when ordering LF or LV levers
NOTE: Consult factory for lead times on other options

Standard models include:

- C8 80EL D LR E 626 5 10252 134 5001 1316
- C8 80EL D LR E 626 8 10252 134 5001 1316
- C8 80EL RX D LR E 626 5 10252 134 5001 1316
- C8 80EL RX D LR E 626 8 10252 134 5001 1316
- C8 80EU D LR E 626 5 10252 134 5001 1316
- C8 80EU D LR E 626 8 10252 134 5001 1316
- C8 80EU RX D LR E 626 5 10252 134 5001 1316
- C8 80EU RX D LR E 626 8 10252 134 5001 1316