



# Access control kit



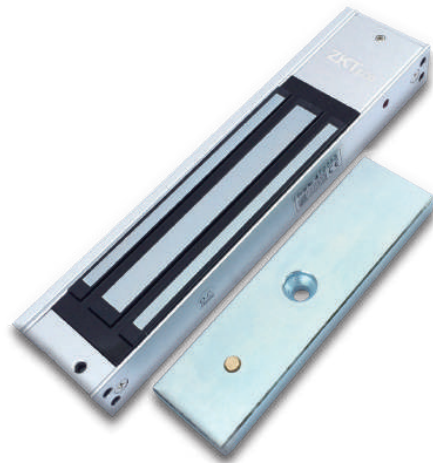
## LM-2805 Electromagnetic lock

### Product description

- Can withstand 200kg-220kg pulling force;
- A variety of installation methods, according to different installation scenarios, U, L, Z, ZL mounting brackets are available;
- Can be installed in iron doors, wooden doors and glass doors;
- With signal feedback function;

### Parameters

Input voltage	DC12V
Working current	480mA±5%
Tensile force range	200kg±5%
Weight	1.77kg
Lock body size	250x47x25.5mm
Iron plate size	180x38x11mm
Interface Description	V+ - positive power supply; V- - negative power supply; Feedback signal output: NO/COM/NC



## Backup power

### Parameters

Operating Voltage	12V-7.5AH
Cyclic Use	14.50 - 14.90V
Standby Use	13.50 - 13.80V
Initial Current	Less than 2.25A



# TLEB102 Exit button

## Product description

The TLEB102 is a new infrared sensor door switch with a compact size. Exquisite appearance, economical application etc., widely used in access control security. Electronic access control systems and other fields.

## Parameters

Switching voltage	DC 9 ~ 16V
Rated current	2A
Operating temperature	-20°C ~ +50°C
storage temperature	-20°C ~ +65°C
Working humidity	10%-90%
shell material	SUS304 stainless steel material
Infrared sensing distance	2-10CM
Size	Length 115* width 70* height 38mm

## Wiring definition

Wiring color	Description
Red	12V
Black	GND
Yellow	NO
White	COM
Green	NC



# Power supply

## Product description

- The output ripple is small and the high frequency interference is small;
- The product structure is simple and convenient for maintenance;
- Pure copper transformer coil, stable operation;
- With overload protection function;
- Can be connected to the backup battery;

## Parameters

Output	DC 12V
Timer	0 - 15S
Momentary current	5A
persistent current	2A



# Packing list

Product	Quantity
Exit switch	X1
Electromagnetic lock	X1
Uninterrupted power supply	X1
Backup power	X1
Bracket	X2



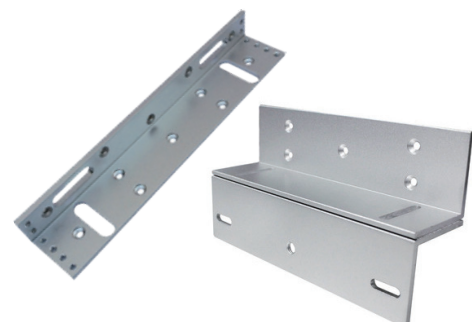
# Lock Bracket

## Product description

Two brackets (L shaped and Z shaped) can be used for lock installation. It can be installed in iron doors, wooden doors.

## Parameters

Finished for Shell	Anodized Aluminum
Opening Mode	90 degree door
L shaped Bracket Size	50*50*30 mm
Z shaped Bracket Size	180*50*50 mm





Power supply

Backup power (in the Power supply box)

Electromagnetic lock

Exit button

Bracket

