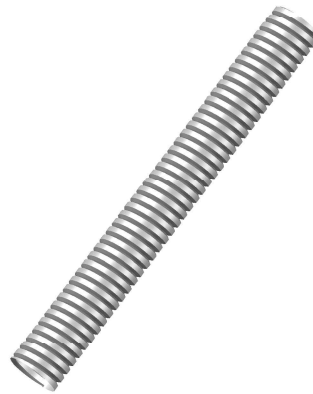


VISTA 3D



CARACTERÍSTICAS

TIPOS DE ACABADO

- Electrozincado EZ (Interiores) - 15 a 20 Micrometros
- Recubierto de pintura Epoxica (EP)

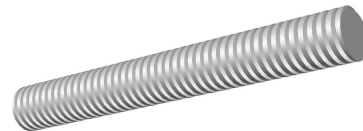
CÓDIGOS & MEDIDAS EN EZ

$\frac{1}{4}$ " X 10' (6.3 mm X 3000mm)	CH-VR-6-3000
$\frac{5}{16}$ " X 10' (7.9 mm X 3000mm)	CH-VR-7-3000
$\frac{3}{8}$ " X 10' (9.5 mm X 3000mm)	CH-VR-9-3000
$\frac{1}{2}$ " X 10' (12.7mm X 3000mm)	CH-VR-12-3000

CÓDIGOS & MEDIDAS EN EPOXICA

$\frac{1}{4}$ " X 10' (6.3 mm X 3000mm)	CH-VR-6-3000EP
$\frac{5}{16}$ " X 10' (7.9 mm X 3000mm)	CH-VR-7-3000EP
$\frac{3}{8}$ " X 10' (9.5 mm X 3000mm)	CH-VR-9-3000EP
$\frac{1}{2}$ " X 10' (12.7mm X 3000mm)	CH-VR-12-3000EP

VISTA ISOMETRICO



VISTA DETALLE

