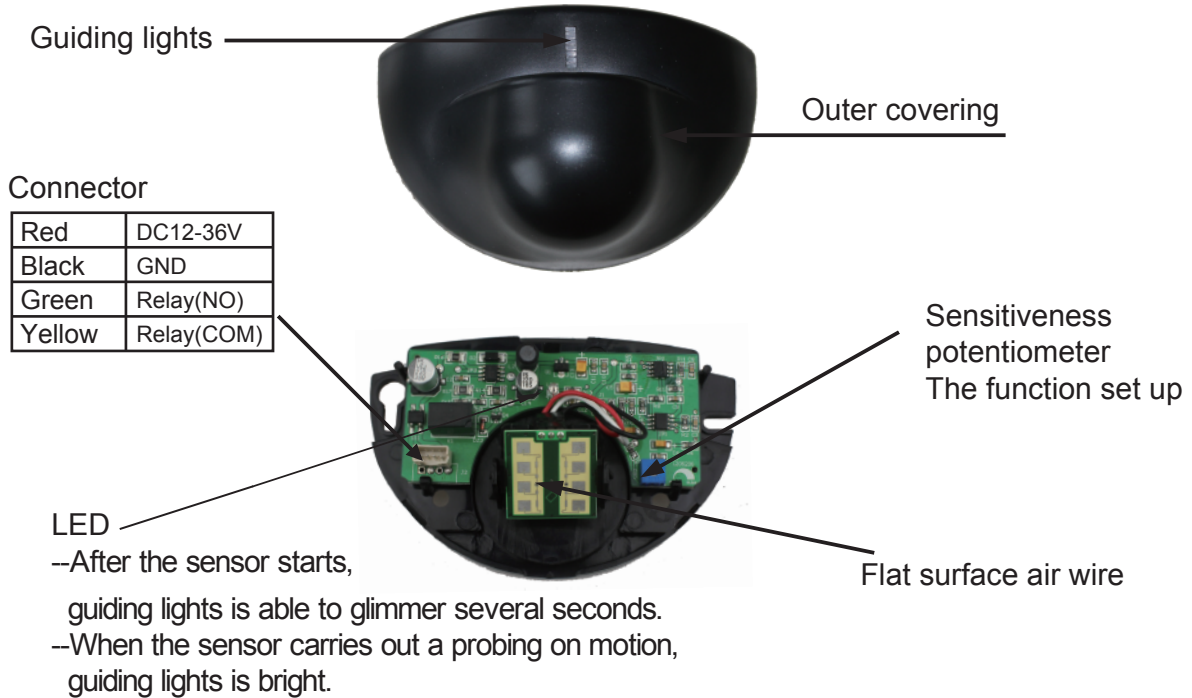


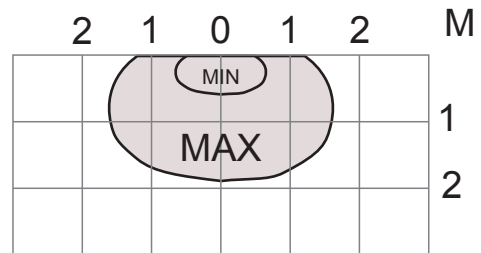
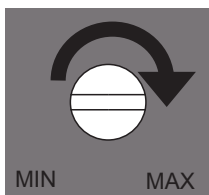
User Guide

1 Synopsis



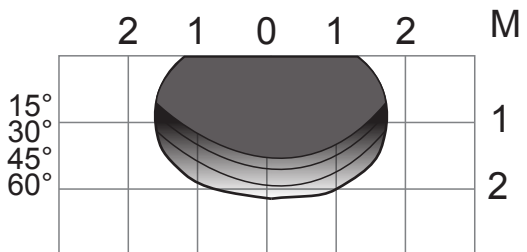
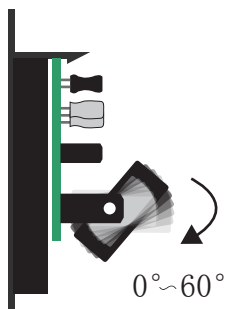
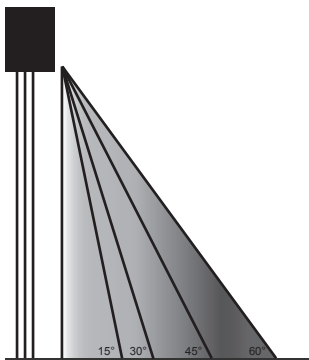
2 The function set up

1 Sensitiveness (potentiometer adjusting) what be decided checking area.



Air wire perpendicularity angle: 30°
 Assemble an altitude: 2.2M

2 What air wire direction dip angle decides checking area.



Sensitiveness:MAX.

3 Open and be closed down



Open



Closed down

4 Assemble matters needing attention



The sensor should be Tightly to prevent from fixation vibrating.



The sensor being not able to put in the covering or directly being put in the rear of other material



The detecting area inner can not place having the object move or swaying.



The detecting area inner can not have the fluorescence source existence.



Do not direct contact the sensor's air wire.

5 Trouble removal

Abnormal	Possibility Cause	Troubleshooting
The door can not open, orchid color guiding lights does not light.	The sensor has not received a power source.	Inspection wiring and power source.
The door opens or closes superseded automatically.	1).Sensor induction arrives at motion. 2).The door produces vibration when being closed down.	Enhance air wire assembling an angle, or bring down sensitiveness. Ensure that the sensor is fixed by rightness. Enhance air wire assembling an angle, or bring down sensitiveness.
The door can not open, orchid color guiding lights does not light.	The door charge switch is bad, or location is wrong.	Examining and ensuring the door charge switch is to be in be coming untied or Automation state.

6 Technology function

Realization technology	:Microwave and microprocessor
Launch frequency	:24.125GHZ
Launch power	:<20 dBm EIRP
Launch frequency density	:<5mW/cm ²
Assemble an altitude maximal	:3m
Assemble a dip angle	:15° ,30° ,45° , 60°
The maximum checks range (while assembling 2.3 meters of altitude)	:4m(W) x2m(H)
Checking pattern	:Move
The minimum checks speed	:5cm/s (Along the longitudinal axis of air wire to tests)
Power source voltage	:12v-24v AC +/- 10%; 12v-36v DC
Power source frequency	:50-60 HZ
Power dissipation	:<2W(VA)
The relay outputs (there be no initial electric potential)	
Maximal contact voltage	:42V AC-60V DC
Maximal contact electric current	:1A (Electric resistance)
The maximum change power	:30W(DC) / 60VA(AC)
Output retention time	:0.5 second
Temperature range	: -20°C to +55°C
Protection rate	:IP 52
Outer covering material	:ABS Plastic
Outer covering color	:Black, Silver gray
External form dimension	:121mm(W) x 80mm(H) x 52mm(D)
Weight	:0.100kg
Conducting wire length	:2.5m