

English**1 APPEARANCE**

1. Magnetic Stick
2. Positioning line
3. Indicator
4. Tamper Button
5. Power Switch
6. Battery

2 ENROLLMENT

3 TEST
Check if the installation position is proper.
Magnet Detection Performance Table

Axes of Operation	Event	On non-ferromagnetic material surface	On ferromagnetic material surface
X+	Break	84	21
	Make	78	20
X-	Break	65	9
	Make	61	8
Y	Break	50	10
	Make	36	8
Z+	Break	52	11
	Make	47	9
Z-	Break	52	12
	Make	48	9

4 INSTALLATION

- I. Check signal strength and align the positioning line.
- II. Install the detector.
 - a. with screw
 - b. with sponge tape

User Manual

Scan the QR code for more information and operation help.

Specification

Detection gap	According to the magnet detection performance table
Tamper protection	Front & Back
LED indicator	Blue (alarm)
Operating temperature	-10°C to 55°C (14°F to 131°F) -10°C to 40°C (14°F to 104°F) Certified
Storage temperature	-20°C to 60°C (-4°F to 140°F)
Operating humidity	10% to 90%
Dimension (W x H x D)	Sensor: 29mm x 69mm x 10mm Magnetic Stick: 14mm x 69mm x 10mm
Weight	38g
Transmission frequency	433 MHz
RF range	1km (open area)
Battery	CR2450 x 1 (included)
Standard battery life	3 years

©2020 Hangzhou Hikvision Digital Technology Co., Ltd. All rights reserved.
About this Manual: This manual includes instructions for using and managing the product. However, changes and other information hereafter are for description and explanation only. The information contained in this Manual is subject to change without notice, due to firmware updates or other reasons. Please find the latest version of the Manual at the Hikvision website: www.hikvision.com

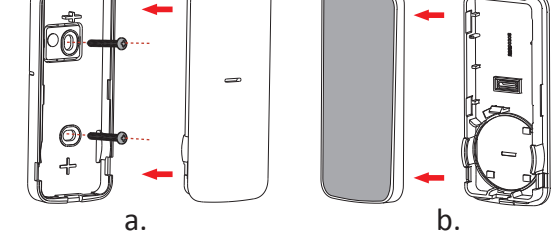
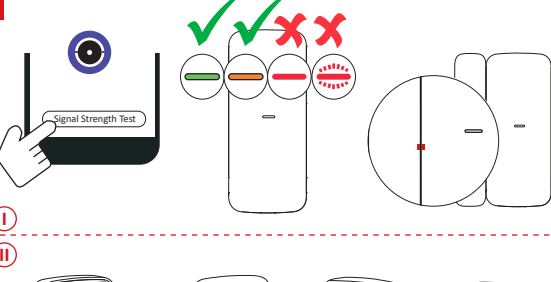
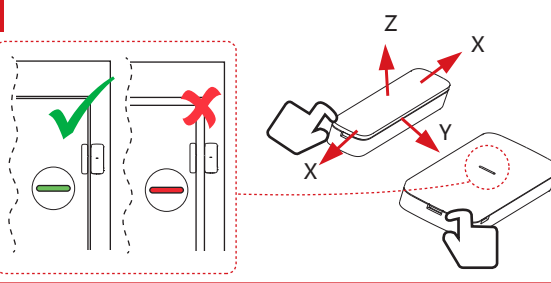
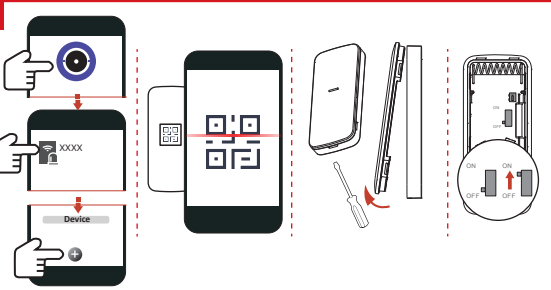
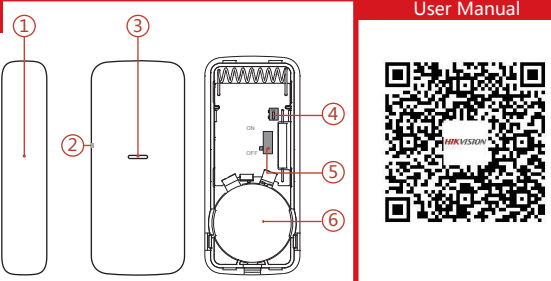
HIKVISION and other Hikvision trademarks and logos are the properties of Hikvision in various jurisdictions. Other trademarks and logos mentioned are the properties of their respective owners.
TO THE MAXIMUM EXTENT PERMITTED BY APPLICABLE LAW, THIS MANUAL AND THE PRODUCT DESCRIBED, WITH ITS ACCESSORIES, SOFTWARE AND FIRMWARE, ARE PROVIDED "AS IS" AND "WITH ALL FAULTS AND DEFECTS." HIKVISION MAKES NO REPRESENTATION OR WARRANTY OF ANY KIND, EITHER EXPRESSED OR IMPLIED, REGARDING THE ACCURACY, COMPLETENESS, OR FITNESS FOR A PARTICULAR PURPOSE, OF THE INFORMATION CONTAINED IN THIS MANUAL, OR THE OPERATION OF THE PRODUCT, OR THE RESULTS OF THE USE OF THE PRODUCT. HIKVISION IS NOT RESPONSIBLE FOR ANY DAMAGE, LOSS OF PROFITS, OR LOSS OF DATA, OR FOR ANY SPECIAL, INCIDENTAL, OR CONSEQUENTIAL DAMAGES, WHETHER BASED ON BREACH OF CONTRACT, TORT (INCLUDING NEGLIGENCE), OR OTHERWISE, ARISING OUT OF THE USE OF THIS PRODUCT, EVEN IF HIKVISION HAS BEEN ADVISED THAT THE POSSIBILITY OF SUCH DAMAGE EXISTS. THE USER SHALL BE RESPONSIBLE FOR PROTECTING HIS OWN DATA AND INFORMATION FROM UNAUTHORIZED ACCESS, LOSS, OR DESTRUCTION. HIKVISION SHALL NOT BE RESPONSIBLE FOR ANY DAMAGE, LOSS OF PROFITS, OR LOSS OF DATA, OR FOR ANY SPECIAL, INCIDENTAL, OR CONSEQUENTIAL DAMAGES, WHETHER BASED ON BREACH OF CONTRACT, TORT (INCLUDING NEGLIGENCE), OR OTHERWISE, ARISING OUT OF THE USE OF THIS PRODUCT, EVEN IF HIKVISION HAS BEEN ADVISED THAT THE POSSIBILITY OF SUCH DAMAGE EXISTS. THE USER SHALL BE RESPONSIBLE FOR PROTECTING HIS OWN DATA AND INFORMATION FROM UNAUTHORIZED ACCESS, LOSS, OR DESTRUCTION. HIKVISION SHALL NOT BE RESPONSIBLE FOR ANY DAMAGE, LOSS OF PROFITS, OR LOSS OF DATA, OR FOR ANY SPECIAL, INCIDENTAL, OR CONSEQUENTIAL DAMAGES, WHETHER BASED ON BREACH OF CONTRACT, TORT (INCLUDING NEGLIGENCE), OR OTHERWISE, ARISING OUT OF THE USE OF THIS PRODUCT, EVEN IF HIKVISION HAS BEEN ADVISED THAT THE POSSIBILITY OF SUCH DAMAGE EXISTS. THE USER SHALL BE RESPONSIBLE FOR PROTECTING HIS OWN DATA AND INFORMATION FROM UNAUTHORIZED ACCESS, LOSS, OR DESTRUCTION.

CE This product and, if applicable, the supplied accessories bear the CE mark and comply with the applicable European Electromagnetic Compatibility standard defined under the RE Directive 2014/53/EU, the EMC Directive 2014/53/EU, the Radio Equipment Directive 2017/2470/EU, the RoHS Directive 2011/65/EU, and the Low Voltage Directive 2011/65/EU. This product complies with the applicable European standards for CE marking. For more information, please refer to the Declaration of Conformity (DoC) and the Declaration of EMC, CE, and RoHS. For product recycling, please refer to the Declaration of Recycling (DoR) and the Declaration of WEEE. For product recycling, please refer to the Declaration of Recycling (DoR) and the Declaration of WEEE. For product recycling, please refer to the Declaration of Recycling (DoR) and the Declaration of WEEE.

BATTERY WARNING
1. Do not remove battery, Chemical Burn Hazard
2. Keep away from fire and use batteries away from the children.
3. Use the battery compartment cover or cover regularly, stop using the product and keep it away from children.
4. If you think batteries might have been swallowed or placed inside any part of the body, seek immediate medical attention.

BATTERY CAUTION
1. Risk of fire or explosion if the battery is replaced by an incorrect type.
2. Improper replacement of the battery with an incorrect type may result in a fire (for example, in the case of alkaline batteries).
3. Do not dispose of the battery into a fire or hot oven, or mechanically crush or cut the battery, which may result in an explosion.
4. Do not touch the battery in an extremely high temperature surrounding environment, which may result in an explosion of the battery.
5. Do not use the battery after it has reached its end of life (expired date) or is damaged, which may result in the leakage of harmful liquid or gas.
6. Dispose of used cells/batteries according to the instructions.

INSTALLATION CAUTION
1. The additional force used to install is equal to three times the weight of the equipment but not less than 50N. The equipment should be suspended horizontally, along the top, equipped with a bracket.
2. The equipment should be suspended horizontally, along the top, equipped with a bracket.
3. The equipment should be suspended horizontally, along the top, equipped with a bracket.

User Manual**User Manual****Español****1 ASPECTO**

1. Vara magnética
2. Línea de posicionamiento
3. Piloto
4. Botón de manipulación
5. Interruptor de alimentación
6. Batería

2 REGISTRO**3 PRUEBA**

Compruebe que la posición de instalación sea la adecuada.
Tabla de rendimiento de detección de imanes

Axes of Operation	Event	On non-ferromagnetic material surface	On ferromagnetic material surface
X+	Break	84	21
	Make	78	20
X-	Break	65	9
	Make	61	8
Y	Break	50	10
	Make	36	8
Z+	Break	52	11
	Make	47	9
Z-	Break	52	12
	Make	48	9

4 INSTALACIÓN

- I. Revise la intensidad de la señal y alinee la línea de posicionamiento.
- II. Instale el detector
 - a. Con tornillo
 - b. Con burlete adhesivo de espuma

Manual de usuario

Escanee el código QR para obtener más información y ayuda sobre el funcionamiento.

Especificación

Espacio de detección	En función de la tabla de rendimiento de detección de imanes
Protección antimanipulación	Anterior y posterior
Indicador led	Azul (alarma)
Temperatura de funcionamiento	-10°C a 55°C (14°F a 131°F) -10°C a 40°C (14°F a 104°F), certificado
Temperatura de almacenamiento	-20°C a 60°C (-4°F a 140°F)
Humedad de funcionamiento	10% a 90%
Dimensiones (An. x Al. x Pr.)	Vara magnética: 14 mm x 69 mm x 10 mm
Peso	38 g
Frecuencia de transmisión	433 MHz
Alcance de radiofrecuencia	1 km (área abierta)
Batería	1 batería CR2450 (incluida)
Vida útil de la batería convencional	3 años

Português**1 APARÊNCIA**

1. Adesivo magnético
2. Linha de posicionamento
3. Indicador
4. Botão antiinvolação
5. Interruptor
6. Bateria

2 REGISTRO**3 TESTE**

Verifique se a posição de instalação está adequada.
Tabela de desempenho de detecção magnética

Axes of Operation	Event	On non-ferromagnetic material surface	On ferromagnetic material surface
X+	Break	84	21
	Make	78	20
X-	Break	65	9
	Make	61	8
Y	Break	50	10
	Make	36	8
Z+	Break	52	11
	Make	47	9
Z-	Break	52	12
	Make	48	9

4 INSTALAÇÃO

- I. Verifique a intensidade do sinal e alinhe a linha de posicionamento.
- II. Instale o detector
 - a. com parafuso
 - b. com fita dupla-face de espuma

Manual do usuário

Leia o código QR para obter mais informações e ajuda na operação.

Especificação

Faixa de detecção	De acordo com a tabela de desempenho de detecção magnética
Proteção antiinvolação	Frontal e traseira
Indicador LED	Azul (alarma)
Temperatura de operação	-10°C a 55°C (14°F a 131°F) -10°C a 40°C (14°F a 104°F) certificado
Temperatura de armazenamento	-20°C a 60°C (-4°F a 140°F)
Umidade de operação	10% a 90%
Dimensões (L x A x P)	Sensor: 29 mm x 69 mm x 10 mm Adesivo magnético: 14 mm x 69 mm x 10 mm
Peso	38 g
Frequência de transmissão	433 MHz
Faixa de RF	1 x km (área aberta)
Bateria	1 x CR2450 (incluída)
Duração padrão da bateria	3 anos

Warning
This is a Class A product. In a domestic environment this product may cause radio interference in which case the user may be required to take adequate measures.

FCC Information
Please take attention that changes or modification not expressly approved by the party responsible for compliance could void the user's authority to operate the equipment.
FCC Compliance: This equipment has been tested and found to comply with the limits for Class B digital device, pursuant to part 15 of the FCC Rules. These limits are designed to provide reasonable protection against harmful interference in a residential installation. This equipment generates, uses and can radiate radio frequency energy and, if not installed and used in accordance with the instructions, may cause harmful interference to radio communications. However, there is no guarantee that interference will not occur in a particular installation. If this equipment does cause harmful interference to radio or television reception, which can be determined by turning the equipment off and on, the user is encouraged to try to correct the interference by one or more of the following measures:
-Reorient or relocate the receiving antenna.
-Increase the separation between the equipment and receiver.
-Connect the equipment into an outlet on a circuit different from that to which the receiver is connected.
-Consult the dealer or an experienced radio/TV technician for help.
This equipment should be installed and operated with a minimum distance 20cm between the radiator and your body.

This device complies with part 15 of the FCC Rules. Operation is subject to the following two conditions:
1. This device may not cause harmful interference.
2. This device must accept any interference received, including interference that may cause undesired operation

Warning
This is a Class A product. In a domestic environment this product may cause radio interference in which case the user may be required to take adequate measures.

FCC Information
Please take attention that changes or modification not expressly approved by the party responsible for compliance could void the user's authority to operate the equipment.
FCC Compliance: This equipment has been tested and found to comply with the limits for Class B digital device, pursuant to part 15 of the FCC Rules. These limits are designed to provide reasonable protection against harmful interference in a residential installation. This equipment generates, uses and can radiate radio frequency energy and, if not installed and used in accordance with the instructions, may cause harmful interference to radio communications. However, there is no guarantee that interference will not occur in a particular installation. If this equipment does cause harmful interference to radio or television reception, which can be determined by turning the equipment off and on, the user is encouraged to try to correct the interference by one or more of the following measures:
-Reorient or relocate the receiving antenna.
-Increase the separation between the equipment and receiver.
-Connect the equipment into an outlet on a circuit different from that to which the receiver is connected.
-Consult the dealer or an experienced radio/TV technician for help.
This equipment should be installed and operated with a minimum distance 20cm between the radiator and your body.

This device complies with part 15 of the FCC Rules. Operation is subject to the following two conditions:
1. This device may not cause harmful interference.
2. This device must accept any interference received, including interference that may cause undesired operation

Warning
This is a Class A product. In a domestic environment this product may cause radio interference in which case the user may be required to take adequate measures.

FCC Information
Please take attention that changes or modification not expressly approved by the party responsible for compliance could void the user's authority to operate the equipment.
FCC Compliance: This equipment has been tested and found to comply with the limits for Class B digital device, pursuant to part 15 of the FCC Rules. These limits are designed to provide reasonable protection against harmful interference in a residential installation. This equipment generates, uses and can radiate radio frequency energy and, if not installed and used in accordance with the instructions, may cause harmful interference to radio communications. However, there is no guarantee that interference will not occur in a particular installation. If this equipment does cause harmful interference to radio or television reception, which can be determined by turning the equipment off and on, the user is encouraged to try to correct the interference by one or more of the following measures:
-Reorient or relocate the receiving antenna.
-Increase the separation between the equipment and receiver.
-Connect the equipment into an outlet on a circuit different from that to which the receiver is connected.
-Consult the dealer or an experienced radio/TV technician for help.
This equipment should be installed and operated with a minimum distance 20cm between the radiator and your body.

This device complies with part 15 of the FCC Rules. Operation is subject to the following two conditions:
1. This device may not cause harmful interference.
2. This device must accept any interference received, including interference that may cause undesired operation

Warning
This is a Class A product. In a domestic environment this product may cause radio interference in which case the user may be required to take adequate measures.

FCC Information
Please take attention that changes or modification not expressly approved by the party responsible for compliance could void the user's authority to operate the equipment.
FCC Compliance: This equipment has been tested and found to comply with the limits for Class B digital device, pursuant to part 15 of the FCC Rules. These limits are designed to provide reasonable protection against harmful interference in a residential installation. This equipment generates, uses and can radiate radio frequency energy and, if not installed and used in accordance with the instructions, may cause harmful interference to radio communications. However, there is no guarantee that interference will not occur in a particular installation. If this equipment does cause harmful interference to radio or television reception, which can be determined by turning the equipment off and on, the user is encouraged to try to correct the interference by one or more of the following measures:
-Reorient or relocate the receiving antenna.
-Increase the separation between the equipment and receiver.
-Connect the equipment into an outlet on a circuit different from that to which the receiver is connected.
-Consult the dealer or an experienced radio/TV technician for help.
This equipment should be installed and operated with a minimum distance 20cm between the radiator and your body.

This device complies with part 15 of the FCC Rules. Operation is subject to the following two conditions:
1. This device may not cause harmful interference.
2. This device must accept any interference received, including interference that may cause undesired operation

Warning
This is a Class A product. In a domestic environment this product may cause radio interference in which case the user may be required to take adequate measures.

FCC Information
Please take attention that changes or modification not expressly approved by the party responsible for compliance could void the user's authority to operate the equipment.
FCC Compliance: This equipment has been tested and found to comply with the limits for Class B digital device, pursuant to part 15 of the FCC Rules. These limits are designed to provide reasonable protection against harmful interference in a residential installation. This equipment generates, uses and can radiate radio frequency energy and, if not installed and used in accordance with the instructions, may cause harmful interference to radio communications. However, there is no guarantee that interference will not occur in a particular installation. If this equipment does cause harmful interference to radio or television reception, which can be determined by turning the equipment off and on, the user is encouraged to try to correct the interference by one or more of the following measures:
-Reorient or relocate the receiving antenna.
-Increase the separation between the equipment and receiver.
-Connect the equipment into an outlet on a circuit different from that to which the receiver is connected.
-Consult the dealer or an experienced radio/TV technician for help.
This equipment should be installed and operated with a minimum distance 20cm between the radiator and your body.

This device complies with part 15 of the FCC Rules. Operation is subject to the following two conditions:
1. This device may not cause harmful interference.
2. This device must accept any interference received, including interference that may cause undesired operation