

The logo for Titan Tower Self-Support is contained within a yellow-bordered oval. It features the words "TITAN" and "TOWER" in large, bold, white, sans-serif capital letters. A registered trademark symbol (®) is positioned between the two words. In the center, a stylized tower structure is depicted with a red top section and a white base. Below the main text, the words "SELF-SUPPORT" are written in a smaller, white, sans-serif font.

TITAN[®] TOWER

SELF-SUPPORT

American Version



www.trylon.com



The Titan tower has been a favourite in light duty applications for more than 30 years. With more than 15,000 Titan towers installed in North America, this model has been used for telemetry, satellite TV, wireless LAN, wireless Internet, mobile radio and amateur applications.

The Titan is a versatile, modular, pre-engineered tower that requires a minimal footprint and is available in heights ranging from 16 to 96 feet.

TITAN SPECIFICATIONS

- Self-Support (free-standing)
- 45" face width
- "Survival" Tower Line
- Maximum height at minimum cost
- Ships assembled in 8ft sections to minimize installation and assembly time
- Ships nested to minimize freight cost
- Maximum height: 96ft
- Section height: 8ft

TITAN APPLICATIONS

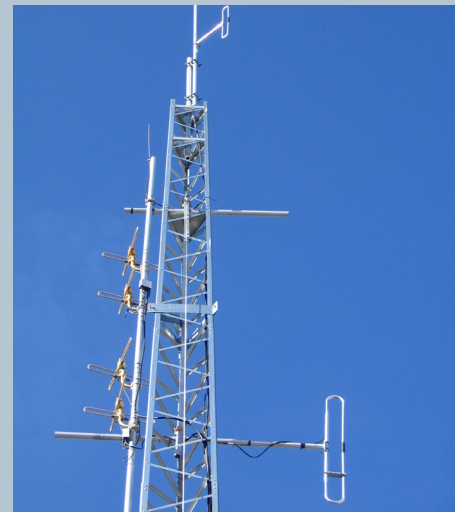
- Ideal for SCADA/remote monitoring
- Two-Way radio
 - EMS, Police, Fire, etc.
 - Companies with personal fleets (trucking companies etc.)
- Wireless Internet Service Providers (WISP)
- Surveillance applications
 - Camera towers

THE TITAN DIFFERENCE

- Maximum height, minimum cost Self-Support option
- Tower ships assembled
- 96ft tower ships on one skid



Titan tower - 80ft T400 model



Typical antenna install on a Titan tower



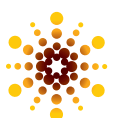
Tower ships nested to minimize freight



TITAN WIND LOAD CHARTS

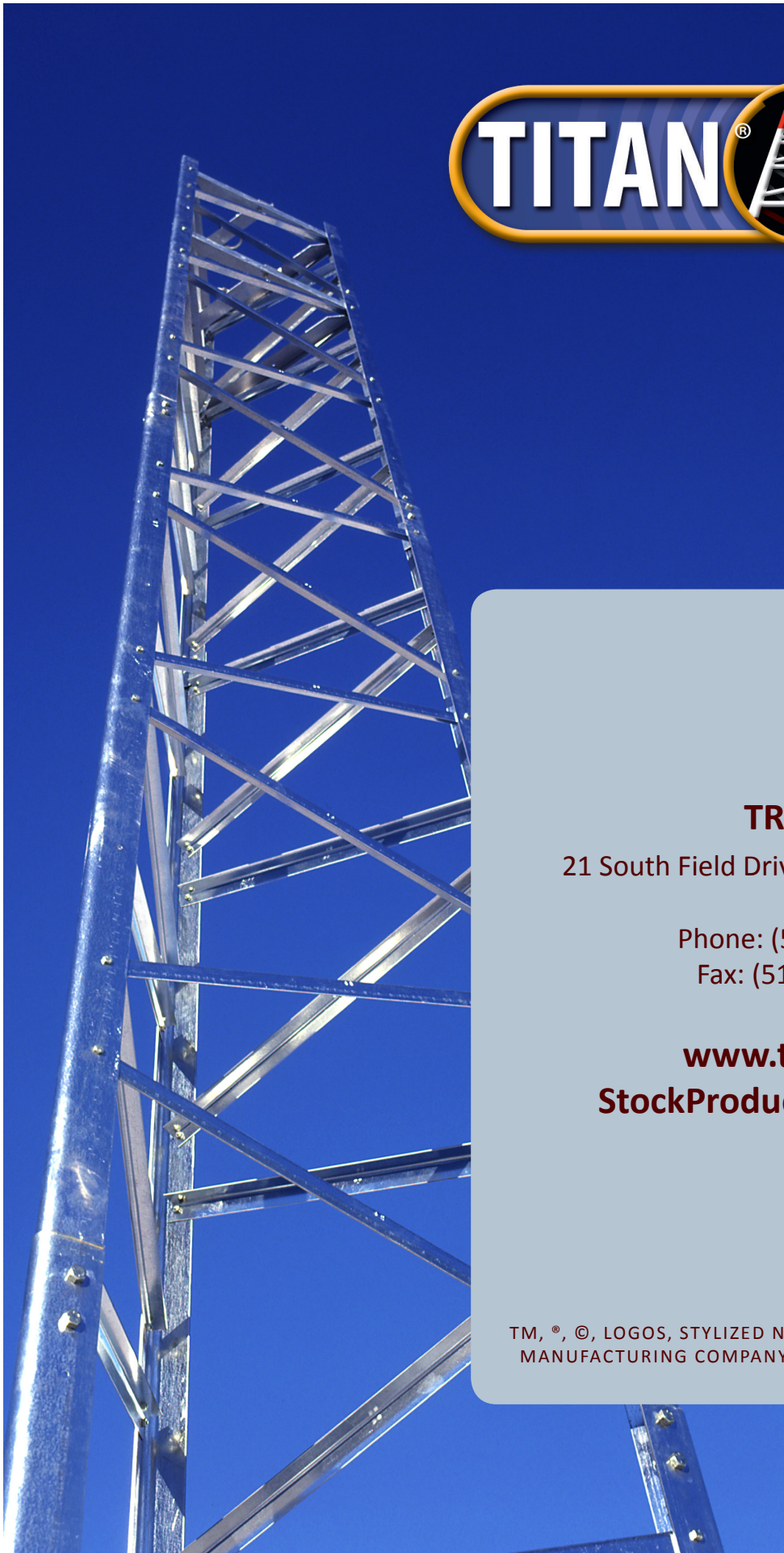
		Allowable antenna area in ft ² at 70/85/100mph - Survival - no ice (round)			Allowable antenna area in ft ² at 70/85/100mph - Survival - 1/2" ice (round)		
HEIGHT	MODEL	70	85	100	70	85	100
16'	T200	16	9	4	2	-	-
16'	T300	28	16	9	3	-	-
16'	T400	39	24	15	10	-	-
16'	T500	64	41	27	24	1	-
16'	T600	87	55	36	36	6	-
16'	T700	108	69	47	60	18	2
16'	T800	132	86	58	80	32	6
24'	T200	16	8	3	2	-	-
24'	T300	24	12	5	3	-	-
24'	T400	39	23	14	10	-	-
24'	T500	60	36	21	24	1	-
24'	T600	76	46	29	36	6	-
24'	T700	94	58	37	60	18	2
24'	T800	131	85	57	80	32	6
32'	T200	16	6	-	2	-	-
32'	T300	24	13	6	3	-	-
32'	T400	39	24	12	10	-	-
32'	T500	56	32	17	24	1	-
32'	T600	70	40	23	36	6	-
32'	T700	95	59	37	60	18	2
32'	T800	132	86	57	80	32	6
40'	T200	16	6	-	2	-	-
40'	T300	25	13	4	3	-	-
40'	T400	40	20	8	10	-	-
40'	T500	52	27	12	24	1	-
40'	T600	70	40	23	36	6	-
40'	T700	95	59	37	60	18	2
40'	T800	132	79	47	80	32	6

		Allowable antenna area in ft ² at 70/85/100mph - Survival - no ice (round)			Allowable antenna area in ft ² at 70/85/100mph - Survival - 1/2" ice (round)		
HEIGHT	MODEL	70	85	100	70	85	100
48'	T200	16	6	-	2	-	-
48'	T300	25	11	1	3	-	-
48'	T400	37	17	4	10	-	-
48'	T500	50	27	12	24	1	-
48'	T600	67	40	23	36	6	-
48'	T700	95	59	32	60	18	2
48'	T800	126	72	40	80	32	6
56'	T200	16	5	-	2	-	-
56'	T300	25	9	-	3	-	-
56'	T400	38	17	4	10	-	-
56'	T500	52	27	12	24	1	-
56'	T600	70	40	20	36	6	-
56'	T700	95	54	26	60	18	2
64'	T200	16	3	-	2	-	-
64'	T300	25	9	-	3	-	-
64'	T400	39	17	4	10	-	-
64'	T500	52	27	10	24	1	-
64'	T600	70	40	15	36	6	-
72'	T200	16	3	-	2	-	-
72'	T300	25	9	-	3	-	-
72'	T400	39	17	3	10	-	-
72'	T500	45	22	6	24	1	-
80'	T200	15	2	-	2	-	-
80'	T300	25	9	-	3	-	-
80'	T400	39	17	1	10	-	-
88'	T200	16	3	-	2	-	-
88'	T300	22	6	-	3	-	-
96'	T200	15	3	-	2	-	-



Trylon

Please note: The Titan tower does not conform to TIA/EIA Standard. P.E. drawings are not available.



TRYLON®

21 South Field Drive, Elmira, ON N3B 0A6

Phone: (519) 669-5421

Fax: (519) 669-8912

www.trylon.com

StockProducts@trylon.com

TM, ®, ©, LOGOS, STYLIZED NAMES ARE TRADEMARKS OF TRYLON
MANUFACTURING COMPANY LTD. © 2013 PRINTED IN CANADA



www.trylon.com