

Electrical Data

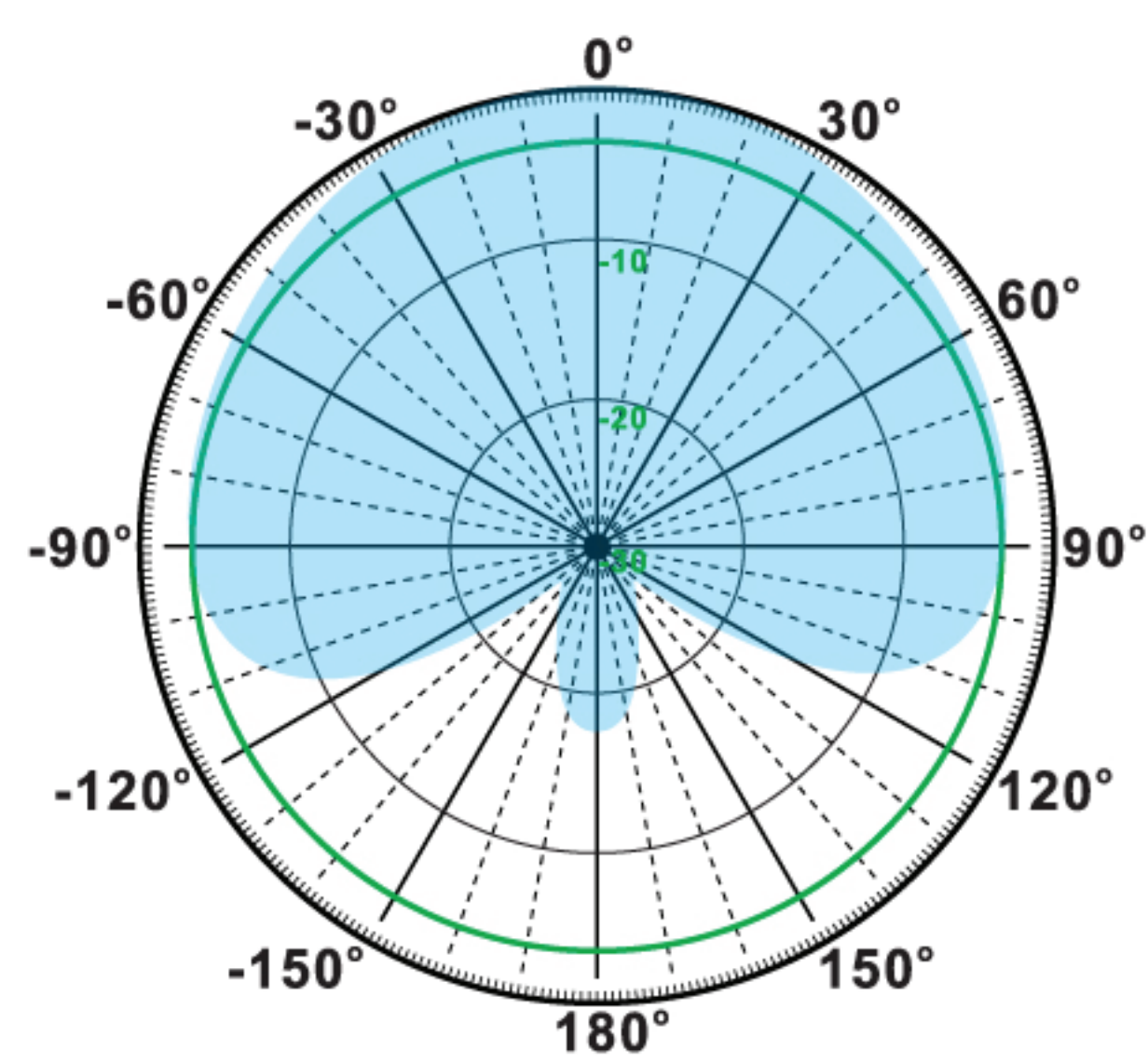
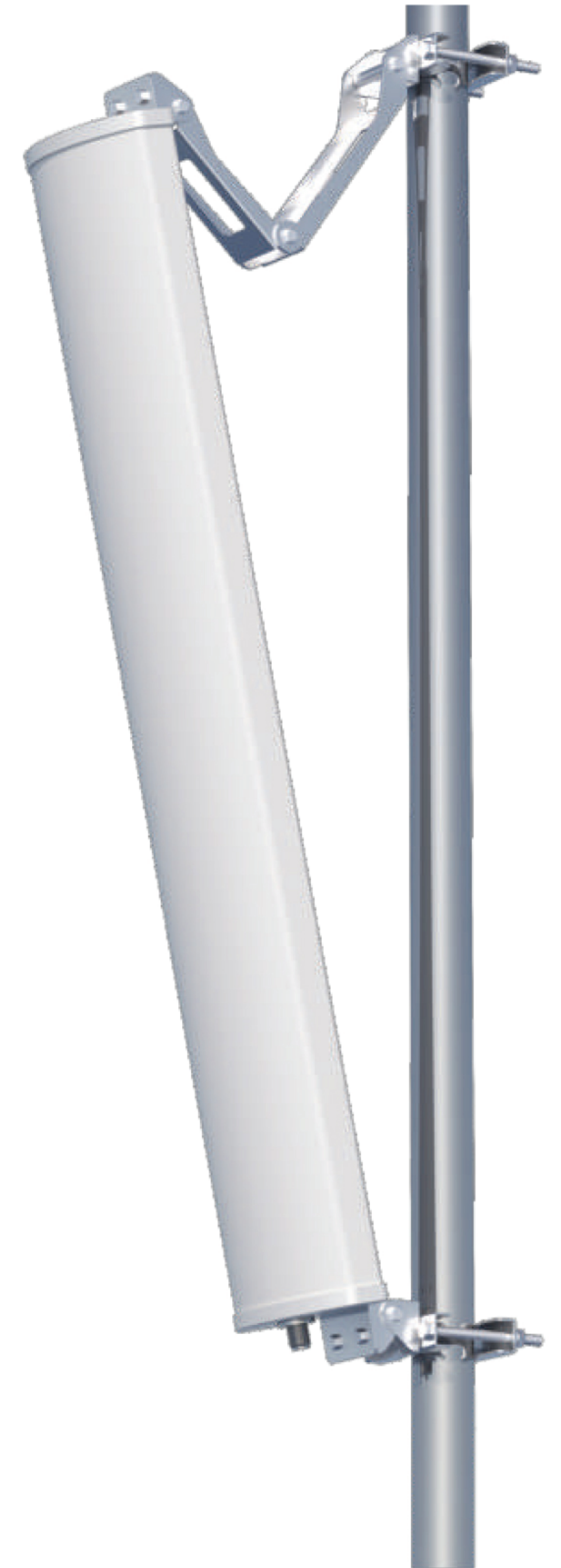
Frequency:	2400-2483 MHz
Gain:	12 dBi
VSWR:	<1.5:1
Polarization:	Vertical
Horizontal Beamwidth :	180°
Vertical Beamwidth:	12°
Nominal Impedance:	50 Ohms
F/B Ratio:	>20 dB
Max Input Power:	100 W
Lightning Protection:	DC Ground

Mechanical Data

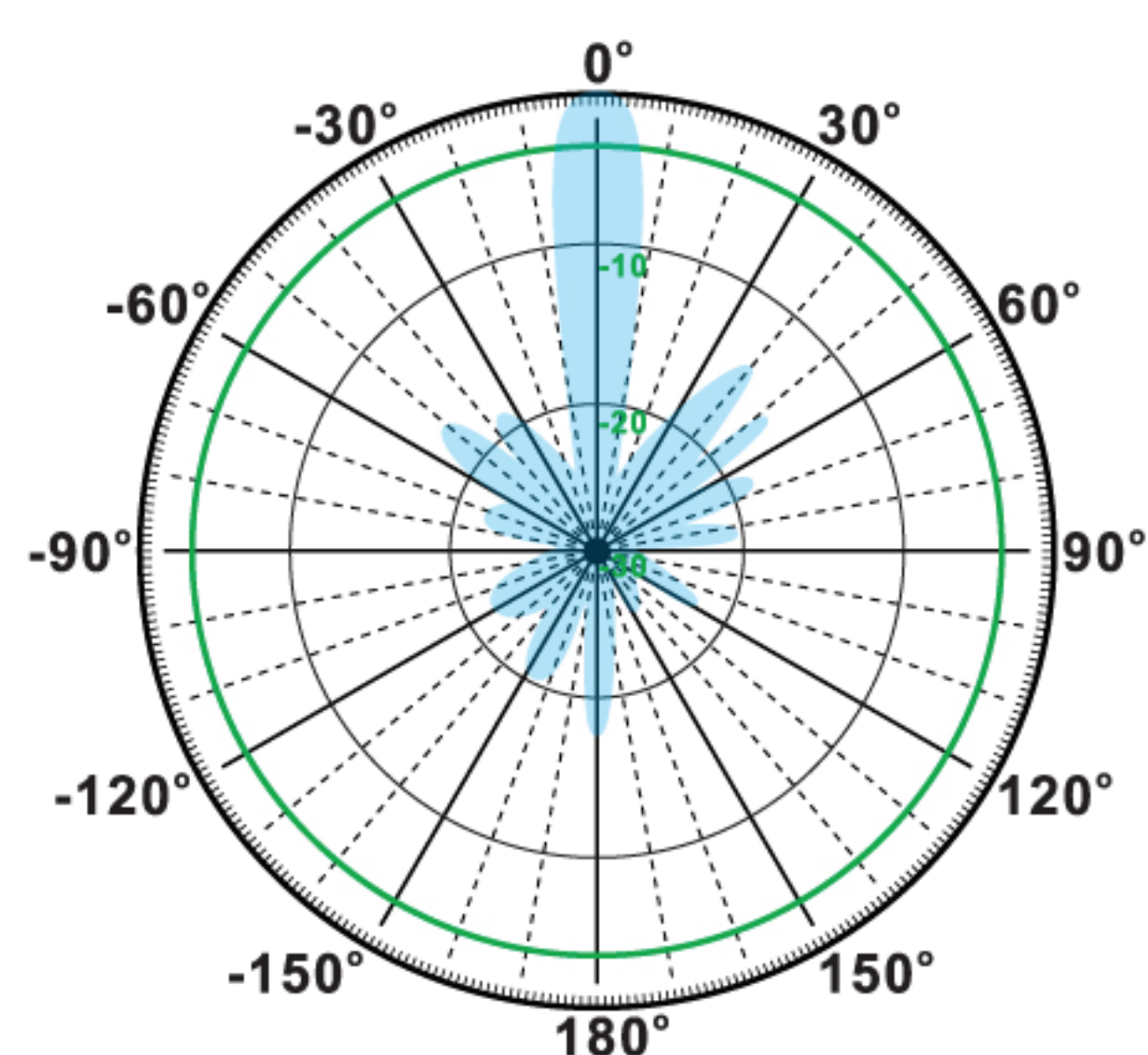
Connector :	N Female
Dimensions:	545*175*80mm
length*width*height	/21.46*6.89*3.15in
Weight:	3kg/6.61lb
Reflector Material:	Aluminum Alloy
Radome Material:	UV Resistance PVC
Mounting Method:	Mast
Mast Size:	Ø40-Ø70mm
Rated Wind Velocity:	210km/h
Operating temperature:	-40~+65°C

Shipment Data

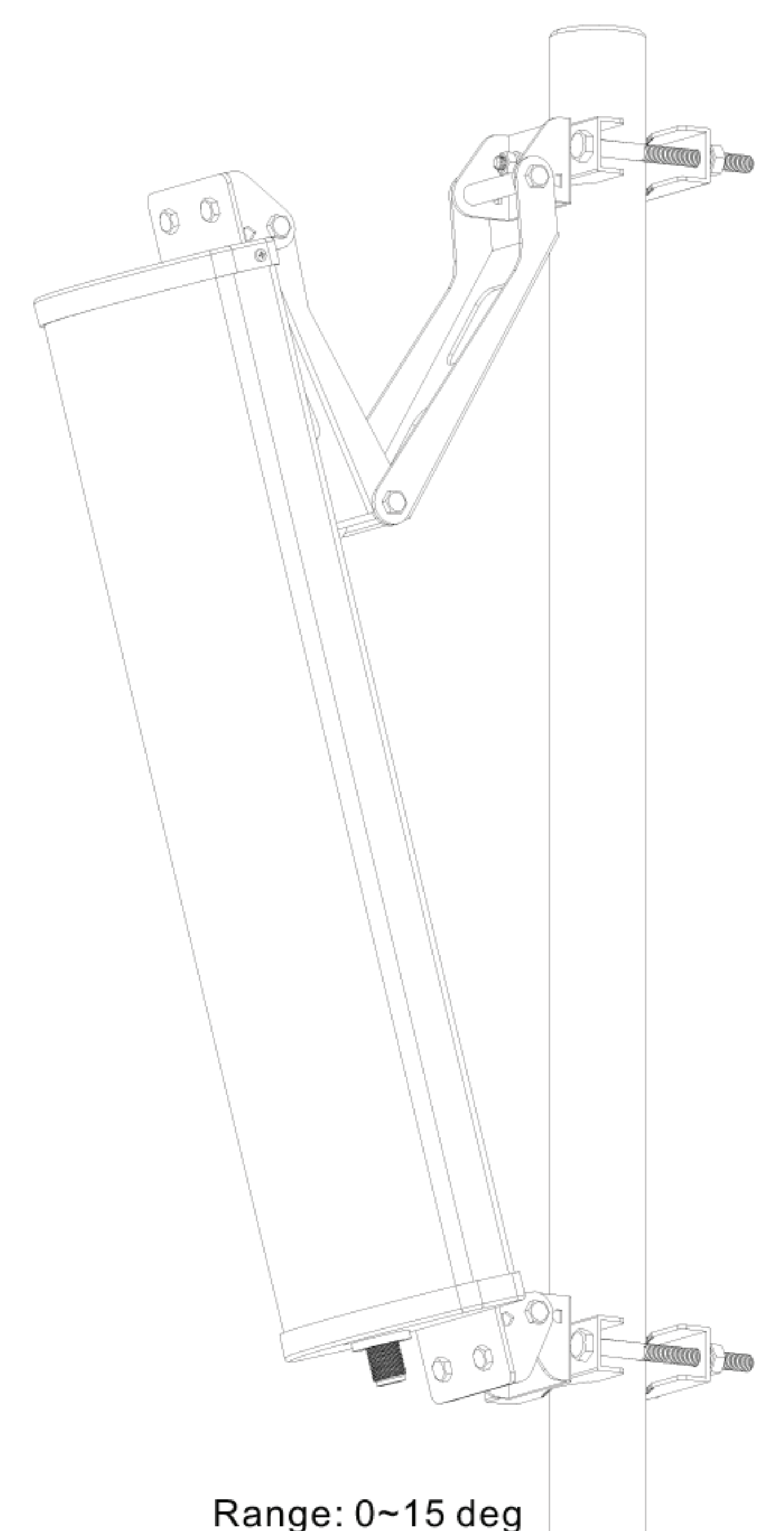
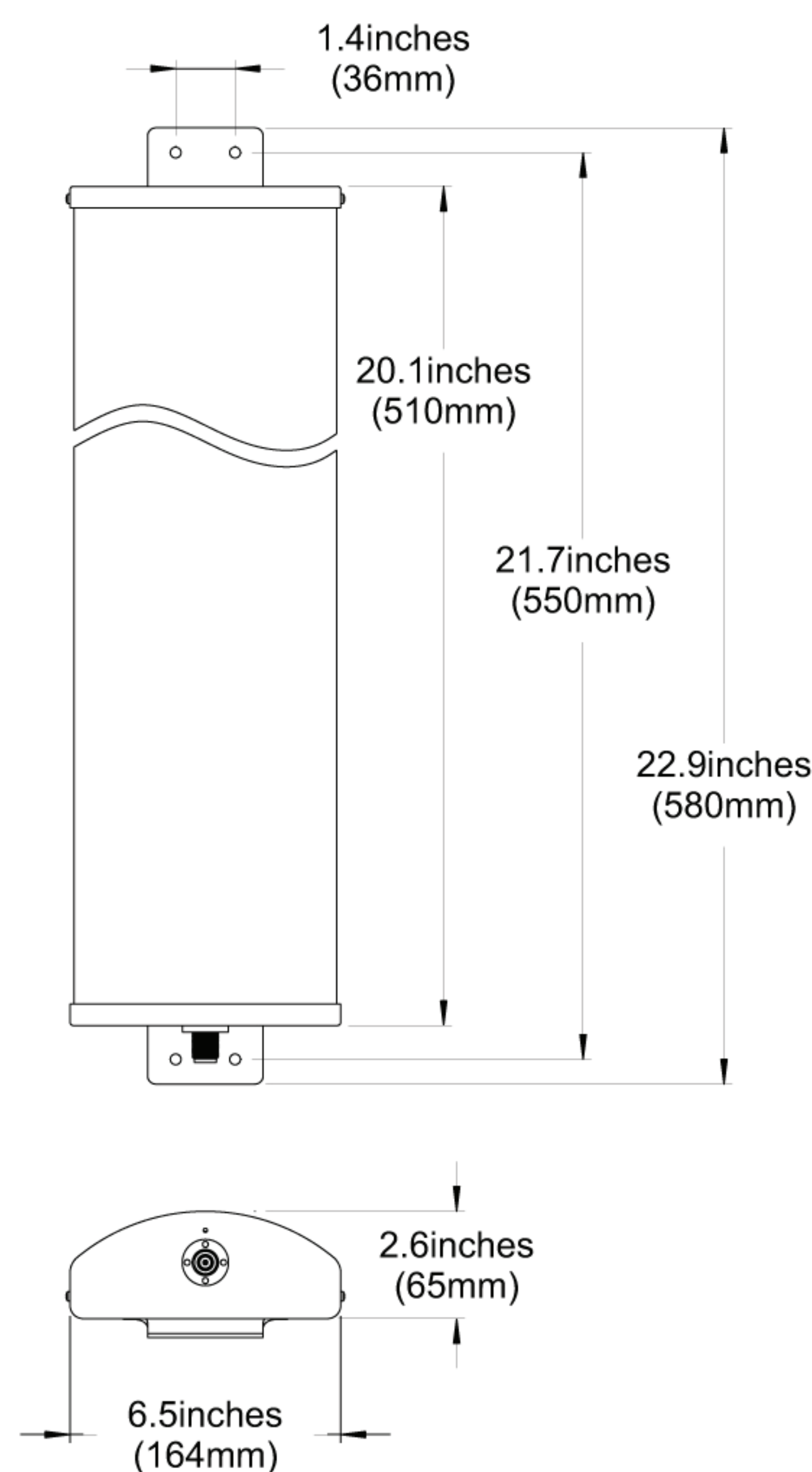
Packing Qty:	1 pc/Carton
Carton Size:	840*220*135mm
(length*width*height)	33.6*8.7*5.3in
Packing Weight:	3.6kg/7.93lb



H-Plane



V-Plane



Range: 0~15 deg