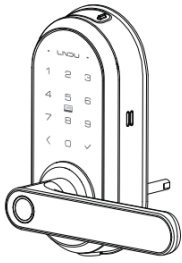


LNDU



User Manual

Wi-Fi Smart Door Lock

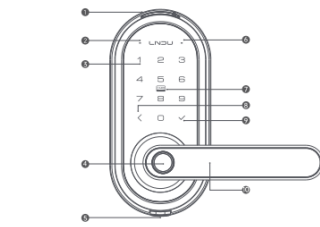
Model T225

Thank you for choosing T225 Smart Door Lock. Please read the quick start guide carefully before operation and installation.

1/ Hardware introduction

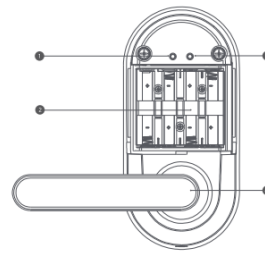
Overview

Note:
1. Thank you for using the smart door lock. Please carefully check the product list, read the instruction manual and install the lock according to the manual. If there is any direct or indirect product problem, hazard and losses caused by failure to operate according to the manual, the company will not bear any responsibility.
2. Prepare screwdriver and a drilling machine before installation.



- 1 Keyhole
- 2 Green Status Light: Succeeded (Door Unlock)
- 3 Touch Keypad
- 4 Fingerprint Scanner
- 5 Emergency Power Supply Port*
- 6 Red Status Light: Abnormal status detected
- 7 Fob Scanner
- 8 Return Button
- 9 Confirm Button
- 10 Exterior Lever

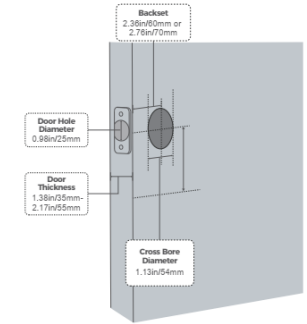
*The "Emergency Power Supply Port" is not for battery charging purpose and can only be used for emergency power supply to the lock.



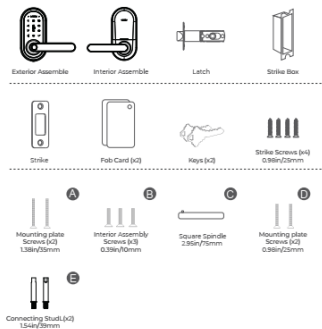
- 1 Set Button
- 2 8 Units of AA Batteries
- 3 Set Button
- 4 Interior Lever

2/ Prepare the door and check dimensions

Compatible Doors

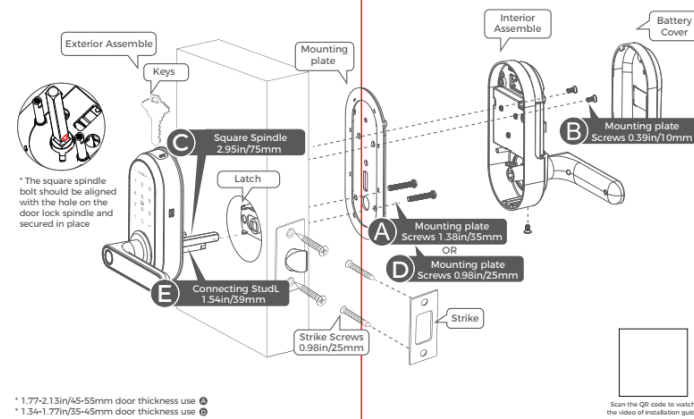


3/ Parts List



TOOL REQUIRED: All you need is a manual screwdriver or an electronic screwdriver.
IMPORTANT: Do not load batteries until lock is completely installed.

4/ Installation Overview

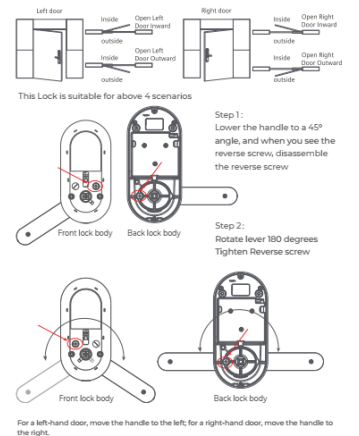


*The square spindle bolt should be aligned with the hole on the door lock spindle and secured in place.

- * 1.77-2.13in/45-55mm door thickness use A
- * 1.34-1.77in/35-45mm door thickness use B

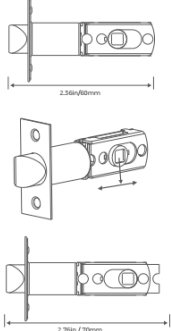
Scan the QR code to watch the video of installation guide.

Door Orientation Confirmation

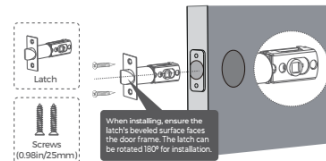


Step 1. Install Deadbolt

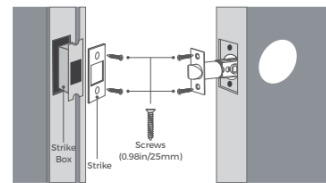
Check your door to see if the deadbolt requires adjustment. If the backset is 2.76in/70mm, Sliding control the faceplate to extend the length.



2. Insert and screw the deadbolt into the doorframe. Make sure the word "UP" on the deadbolt faces up.

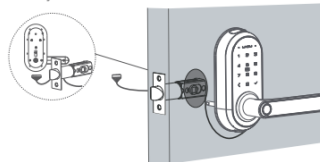


Step 2. Install Strike Plate



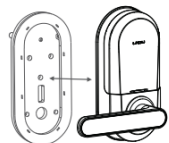
Step 3. Install Exterior Assembly

Please fix the Square Spindle and Connecting Stud, to the Exterior Assembly.



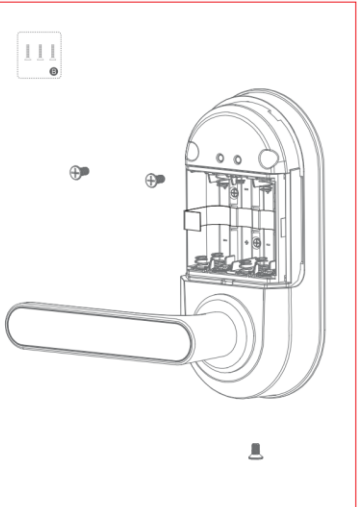
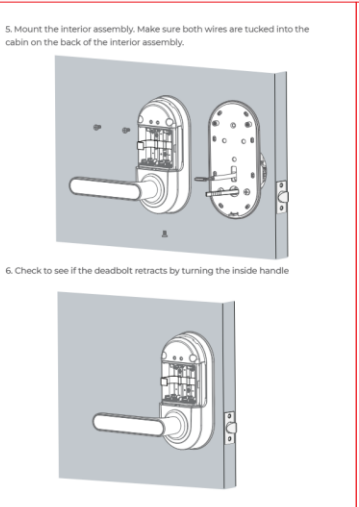
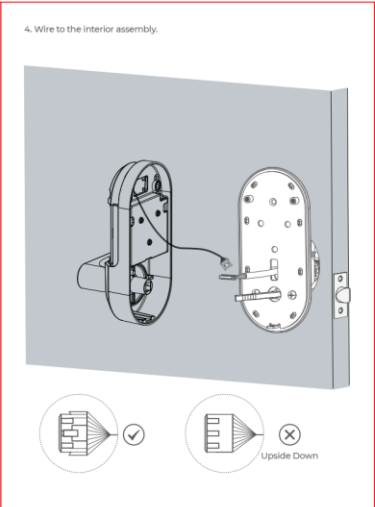
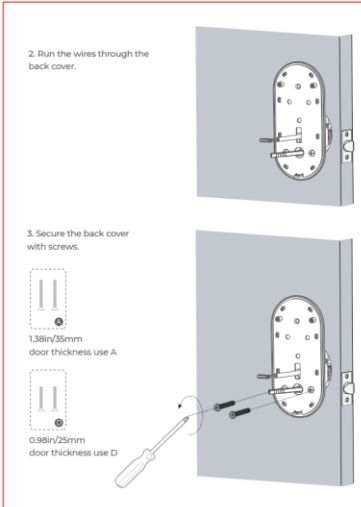
Step 4. Install Interior Assembly

1. Detach the back cover from the interior assembly.



Customer Service

Email us: Customer Support: support@lndu.com
Dongguan Lingdu Electronic Technology Co., Ltd
No.1 Longfeng Street, Qingxi Town, Dongguan City, Guangdong Province, China



Operation Instructions

1. Restore Factory Settings

Step1: Press and hold "Reset" button, and after 2 seconds, the lock will start emitting a "beep" sound (7 times).

Step2: Hold the button until you hear the voice prompt. To confirm, please press the "OK" button.

Step3: Press the unlock button within 4 seconds, you will hear the voice prompt. Factory reset succeeded

2. Set Administrator Password

Step1: Press the set button, if no administrator password has been set before, you will hear a voice prompt. Please set the administrator password

Step2: After input the administrator password, press the "OK" button to confirm.

Step3: Follow the voice prompt instructions, enter the administrator password again, and press the "OK" button to confirm.

3. Enter The Function Settings Mode

Step1: Press the "Settings" button. You will hear a voice prompt saying "Please verify administrator user." Enter the correct administrator password, then press the "OK" button to confirm. If the password verification is successful, you will enter the setting mode.

4. Setting Mode Function List

Other function settings	Normally open function Press [1]	[1] Normally open Press 1-6
Short press on set button		[2] Normally close Press 1-6
Enter administrator password	Voice Prompt Volume Press 2	[1] Mute Press 1-6
Press 4		[2] Low Press 1-6
		[3] Medium Press 1-6
		[4] High Press 1-6
	Immersion version Press 3	

5. Permanent Unlock Mode

The "Normally open" function of a door lock allows the door to remain unlocked or accessible without the need for a key or code.

Note1: When enabled, the door will remain open freely without entering the system.

Note2: The door can be set to remain open for 5 to 3600 seconds, after which the lock will automatically restore, requiring verification or a key to open the door again.

Enter Path: Setting Mode → Press [4] → Press [1] → Press [0] → Press [0]

Attention: When the battery level is below 20%, we recommend charging it immediately. If you use the door lock frequently, the battery can last approximately one week; if infrequently used, it can last about a month.

5/ Programming instructions

App Connection Guide

Smart Life App

① Select the Quick Login

② Input the Account and the Password

App User Guide

① To manage the network (connect after setting the key)

② Start press on the set button

③ Input the admin password

④ Press [0]

⑤ Select the D1

⑥ Input the WiFi Password

⑦ Select the Done

Power-saving Mode

① Select the Set

② Open the dormant switch

Attention:

- When the dormant switch is turned on to save power, functionalities of the smart lock controlled via the smartphone app will be disabled. This includes unlocking and adding passwords through the app.
- You can only view unlock records through the app. To unlock, add passwords or register fingerprint recognition, you must use the keypad on the door lock.
- To disable power-saving mode, you must manually wake up the door lock panel and then turn off the dormant switch in the mobile app.

Add Member Password

① Member Management

② Select the Member

③ Select 'Add' in Password

④ Select the Randomly generated then Save

⑤ Operation successful

6/Q&A

01 Question: After the door lock is reset, what will happen?
Answer: When the door lock is reset, any password (if it exists) can unlock the door. If you want to change this setting, simply register an administrator password.

02 Question: What is the difference between installing 4 AA batteries and filling it batteries?
Answer: With four batteries, the product can run normally with eight batteries, enjoy a longer-lasting use of experience.

03 Question: Why do I have to replace the battery in less than 6 months?
Answer: Please use high-quality batteries such as Duracell, Energizer and so on. If AA batteries could support door lock unlocking more than 1800 times. If you unlock the door more than 20 times a day or the weather is cold, the battery life may be less than 3 months.

04 Question: The door lock cannot be installed, what should I do?
Answer: Please refer to the door thickness and other data in the instruction manual to ensure that our lock is suitable for your door. Also please remove all accessories of the old lock before installation. Our door locks are not compatible with other door lock accessories.

05 Question: The screws aren't install, what happened?
Answer: Each screw installs differently. Please make sure to use the correct screws in each location.

06 Question: Missing accessories, what should I do?
Answer: You can contact our customer service team to request accessories for you. email: support@indulip.com

07 Question: The door lock still doesn't work after installing batteries, why?
Answer: You could check if the battery is installed correctly. Also please check whether the exterior assembly connection power cord is completely inserted into the mainboard of interior assembly. If the door lock still doesn't work, it may have been damaged during shipping. You can contact Amazon customer service to replace a new lock.

08 Question: The latch is not working properly, what should I do?
Answer 1: The latch is adjustable (2.36in/60mm or 2.76/70mm), please adjust to the appropriate length when installing.
Answer 2: Our door lock will automatically recognize the direction of opening the door after being powered on. You can restore the factory settings to make the latch work properly.

09 Question: I could not manually turn the lock from inside the house, what could be wrong?
Answer: First, check the installation for errors based on the installation video. If there is no error in the installation, the reason is the gears inside the product are not tightly fitted. You need to use Turn the knob to the open or closed position with more force, so that the gears can return to the correct position.

FCC Statement

This equipment has been tested and found to comply with the limits for a Class B digital device, pursuant to part 15 of the FCC Rules. These limits are designed to provide reasonable protection against harmful interference in a residential installation. This equipment generates, uses and can radiate radio frequency energy and, if not installed and used in accordance with the instructions, may cause harmful interference to radio communications. However, there is no guarantee that interference will not occur in a particular installation. If this equipment does cause harmful interference to radio or television reception, which can be determined by turning the equipment off and on, the user is encouraged to try to correct the interference by one or more of the following measures:

- Reorient or relocate the receiving antenna.
- Increase the separation between the equipment and receiver.
- Connect the equipment into an outlet on a circuit different from that to which the receiver is connected.
- Consult the dealer or an experienced radio/TV technician for help.

Caution: Any changes or modifications to this device not explicitly approved by manufacturer could void your authority to operate this equipment.

This device complies with part 15 of the FCC Rules. Operation is subject to the following two conditions: (1) This device may not cause harmful interference, and (2) this device must accept any interference received, including interference that may cause undesired operation.

RF Exposure Information
This equipment complies with FCC radiation exposure limits set forth for an uncontrolled environment. This equipment should be installed and operated with minimum distance 20cm between the radiator and your body.

7/ DISCLAIMER

- Your biometric information is stored locally on the device rather than in the cloud, ensuring your personal information is safe and private.
- If services are provided by Tuya, a third-party company. For information on how Tuya processes data, please refer to Tuya's privacy policy.