

SD212-SF2P2SNM(DXX) 2 dipole, 5.0 dBd, bi-directional, 138-174 MHz

Also referred as: SRL210C2NM*2-2

- Covers the entire 138-174 MHz frequency range
- 5.0 dBd gain with bi-directional pattern
- 300 Watt power handling
- Can be top or side mounted (Universal mount)

**Recommend SMK-125-A3 or SMK-125-A7 for Offset Side Mount.
Available from Sinclair separately.**

The SD212 series is a 2-bay exposed dipole antenna designed for applications where moderate gain is required. These premium-quality antennas are well suited to public safety applications.

The design of these antennas provides for coverage from 118 to 225 MHz in 3 sub bands, 118-138 MHz for civil aviation applications, 138-174 MHz for private mobile networks, and public safety, and 220-225 MHz for transportation networks.

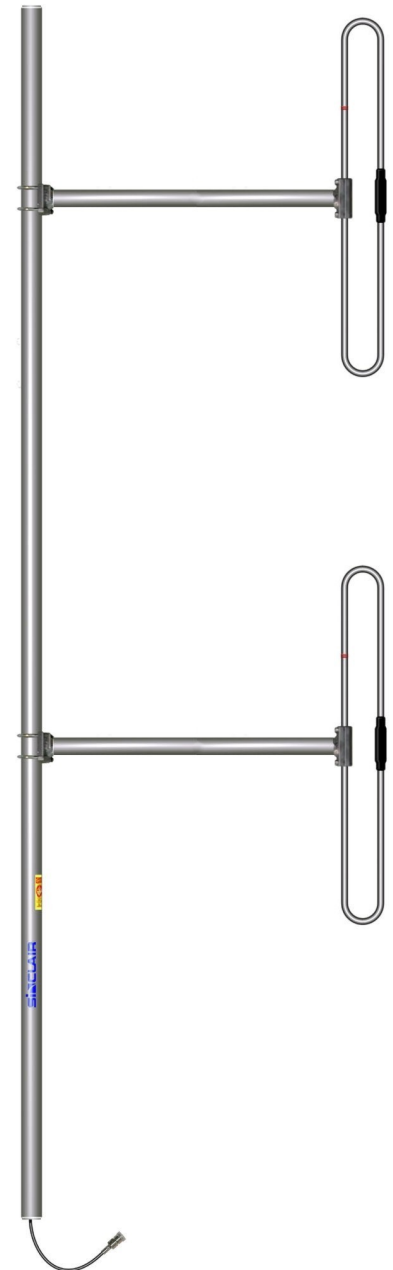
The standard connector offered is N-male which is terminated on a 1 foot cable.

When ordering, please refer to the chart below for the model number. Downtilt configurations are subject to various list price. Please contact your Sinclair Sales Representative or Customer Service Representative for more information.

Model Number	Downtilt
SD212-SF2P2SNM(D00)	0°
SD212-SF2P2SNM(D02)	2°
SD212-SF2P2SNM(D04)	4°
SD212-SF2P2SNM(D06)	6°
SD212-SF2P2SNM(D08)	8°
SD212-SF2P2SNM(D10)	10°

Application Notes

- The SD212 is available with a bi-directional pattern (P2) providing 5.0 dBd gain or with a offset pattern (P4) providing a 5.5 dBd gain (gain varies slightly with frequency).
- Sub bands:
118-138 MHz (F1)
138-174 MHz (F2)
190-225 MHz (F3)



Region	United States	Europe, Middle East and Africa	Caribbean and Latin America	Canada and rest of the world
Telephone	USA: 1 800 263 3275	International: +44 (0) 1487 84 28 19	International: +1 905 726 7676	Canada: 1 800 263 3275 International: +1 905 727 0165
E-mail	salesusa@sinctech.com	salesuk@sinctech.com	salesla@sinctech.com	salescan@sinctech.com
Product Specification Sheet		SD212-SF2P2SNM(DXX)	Issue: 10	Dated: 06-10-17
EPR 016865				Dated: 06-10-17
Customer Tech Manual 005130				

Electrical Specifications

Frequency Range	MHz	138 to 174
Bandwidth	MHz	36
Connector		N-Male
Gain (nominal)	dBd (dBi)	5 (7.1)
Input VSWR (max)		1.5:1
Polarization		vertical
Impedance	Ω	50
Pattern		Bi-directional
Vertical beamwidth (typ)	degrees	34
Average Power Input (max)	W	300
Lightning protection		DC ground
Electrical tilt (available)		0,2,4,6,8, or 10 degrees

Notes

*1 : Qty 2 required

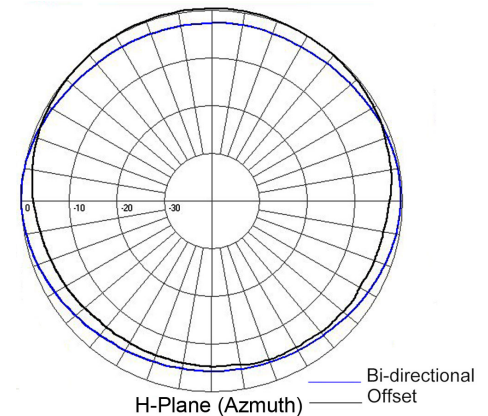
Mechanical Specifications

Width	in (mm)	40 (1016)
Depth	in (mm)	3 (76)
Length/ Height	in (mm)	120 (3048)
Base pipe diameter	in (mm)	1.9 (48)
Base pipe mounting length	in (mm)	36 (914)
Radiating element material		aluminum
Base pipe material		aluminum
Weight	lbs (kg)	22.5 (10.22)
Weight iced (1/2" ice)	lbs (kg)	55 (24.97)
Mounting Hardware (Optional)		Clamp005, Clamp015, or Clamp130 *1
Recommended For Offset Side Mount:		SMK-125-A3 or SMK-125-A7
Mounting configurations		Universal Mount
Actual shipping weight	lbs (kg)	45 (20.43)
Shipping dimensions	in (mm)	124x48x6 (3150x1219x152)

Ordering Information

Clamps must be ordered separately.

When ordering, please refer to the model list on the previous page for specific model numbers and downtilt configurations.



Environmental Specifications

Temperature range	°F (°C)	-40 to +140 (-40 to +60)
Wind Loading Area (Flat Plate Equivalent)	ft² (m²)	2.14 (0.2)
Wind Loading Area (1/2" ice)	ft² (m²)	3.71 (0.34)
Rated wind velocity (no ice)	mph (km/h)	140 (225)
Rated wind velocity (1/2" radial ice)	mph (km/h)	105 (169)
Lateral Thrust (100 mph No Ice)	lbs (N)	77 (342.5)
Torsional moment (100 mph No Ice)	ft-lbs (Nm)	83 (112.1)
Bending moment (100 mph No Ice)	ft-lbs (Nm)	247 (333.5)
Tip deflection (100 mph No Ice)	degrees	1.02

Region	United States	Europe, Middle East and Africa	Caribbean and Latin America	Canada and rest of the world
Telephone	USA: 1 800 263 3275	International: +44 (0) 1487 84 28 19	International: +1 905 726 7676	Canada: 1 800 263 3275 International: +1 905 727 0165
E-mail	salesusa@sinctech.com	salesuk@sinctech.com	salesla@sinctech.com	salescan@sinctech.com