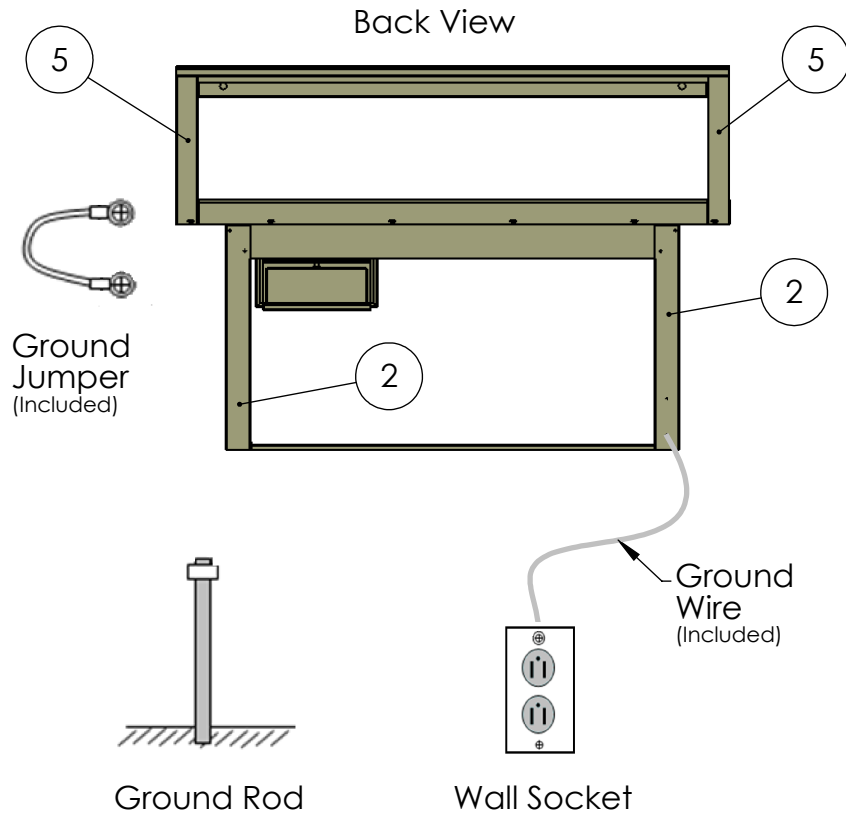
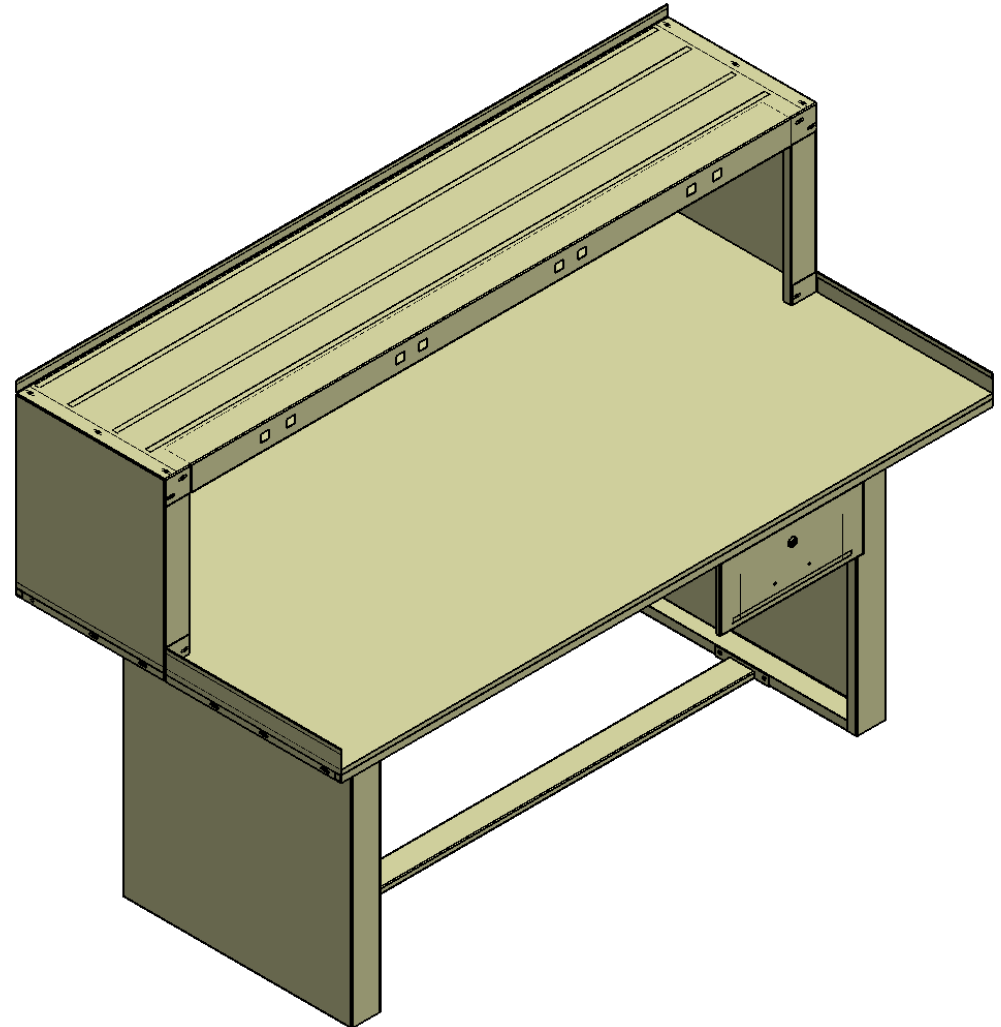


## Recommended installation of workbench to ground.

- Intall the ground jumper linking intems 2 and 5. To do this, use the screws included for the assembly of the workbench
- Install ground wire to a wall socket ground or ground rod.



## User Manual S7D219 Workbench.



EQUIPOS PROFESIONALES DE COMUNICACIÓN S.A. DE C.V.  
Calle Méndez y 20 # 2001, Colonia Pacifico,  
Tel. (614) 4120126  
C.P. 31030, Chihuahua, Chih, México

Please read this manual carefully before use  
and keep it for future reference.

## Introduction

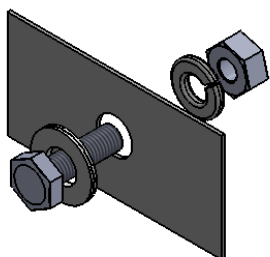
Thank you for purchasing this Workbench. The following information will assist you in the assembly of the Workbench.

## Recommendations

Tool required:  
7/16" spanner (not included)  
7/16" ratchet and socket (not included)

## How To Install:

· Install the screws, washers and nuts of the following form:



· To get started with the assembly, follow the next table.

## Parts list

| PART NO. | DESCRIPTION            | QTY. |
|----------|------------------------|------|
| 1        | SEPARADOR              | 1    |
| 2        | SOPORTE LATERAL GRANDE | 2    |
| 3        | SEPARADOR SUPERIOR     | 2    |
| 5        | SOPORTE LATERAL CHICO  | 2    |
| 6        | TOMACORRIENTE          | 1    |
| 7        | REDILA TRASERA         | 1    |
| 8        | REDILA LATERAL         | 2    |
| 9        | SOPORTE PARA CAJON     | 2    |
| 10       | CAJON                  | 1    |
| 22       | MDF                    | 1    |

- 40 Hex Head Screw 1/4X1/2 in.
- 56 Washer 1/4 in.
- 56 Spring Lock Washer 1/4 in.
- 48 Hex Nut 1/4 in.
- 16 Hex Head Screw 1/4X1 3/4 in.

## Specifications

- External Dimensions(Width X Height X Deep):  
1830 x 1266 x 915 mm
- Weight: 67 Kg
- Color: Beige and white deck.

NOTE: The drawer part (9 and 10) has the option to be assembly in the left or right side.

## Assembly

