

# RG-EG406XS & RG-EG406XS-P

## Reyee 2.5G Cloud Managed Router

DATASHEET

[Explore More](#) ▶



### Highlights

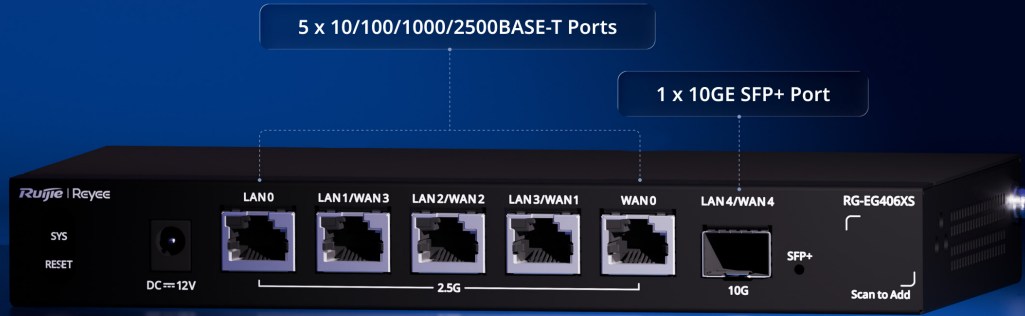
- Supporting up to 400 concurrent clients
- High-performance router with 2.5 Gbps throughput for diverse network scenarios
- Powerful VPN with up to 100 tunnels for branches and remote employees
- Efficient bandwidth management based on applications and users
- Multi-WAN, smart load balancing
- Lifetime\* free management on Ruijie Cloud anytime, anywhere

\* Lifetime means the lifespan of the product, subject to EOL policies.

# Highlight Features

## RG-EG406XS

Unleashing Multi-Gig, Elevating Performance



400 Concurrent Clients

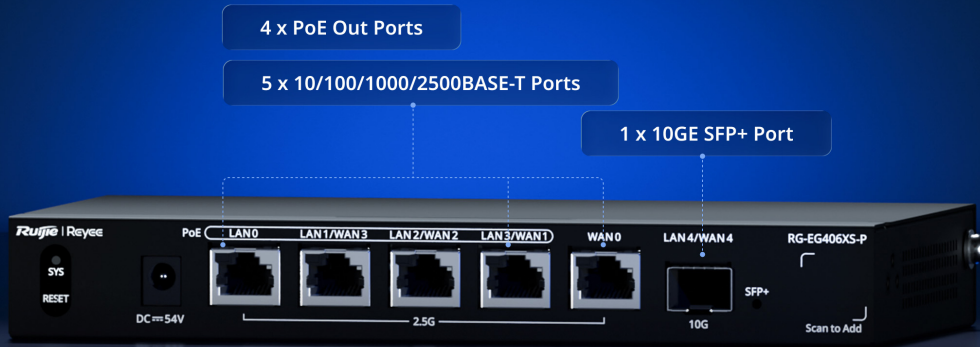
100 VPN Tunnels

2.5 Gbps Throughput

Multi-WAN Load Balancing

## RG-EG406XS-P

Unleashing Multi-Gig, Elevating Performance



400 Concurrent Clients

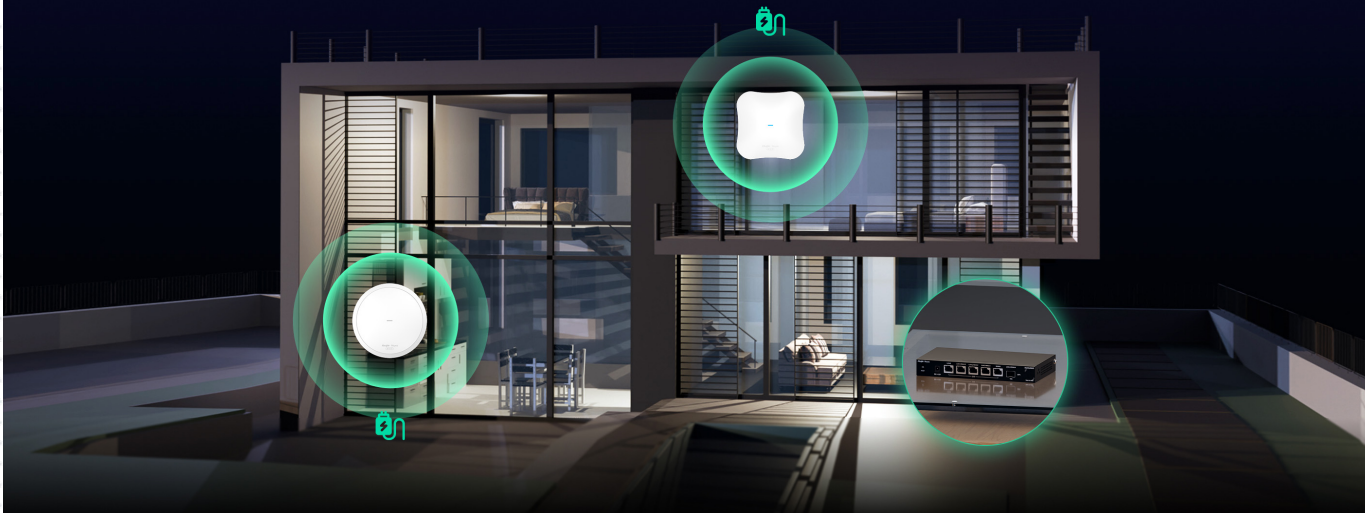
100 VPN Tunnels

2.5 Gbps Throughput

Multi-WAN Load Balancing

## Whole-Home 2.5G, Designed for Your Ideal Living

Empower every corner with ultra-fast, intelligent connectivity

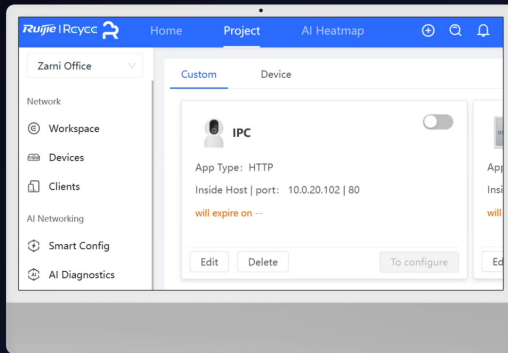


\* Product images are computer-generated for illustration purposes only. Actual products may vary in details, features, or appearance.

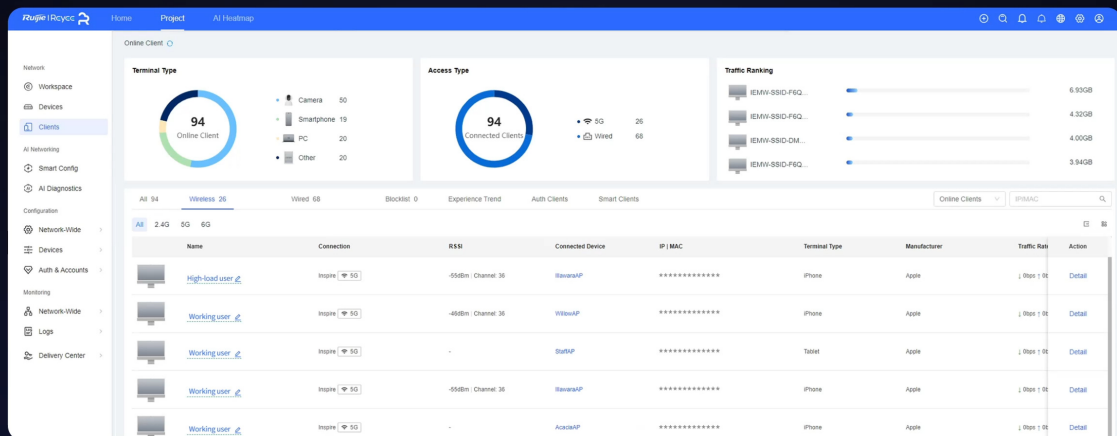
# Highlight Features

## Easy NAT Traversal

The management console uniformly displays all third-party devices, enabling easy intranet access and one-click links to their web interfaces.

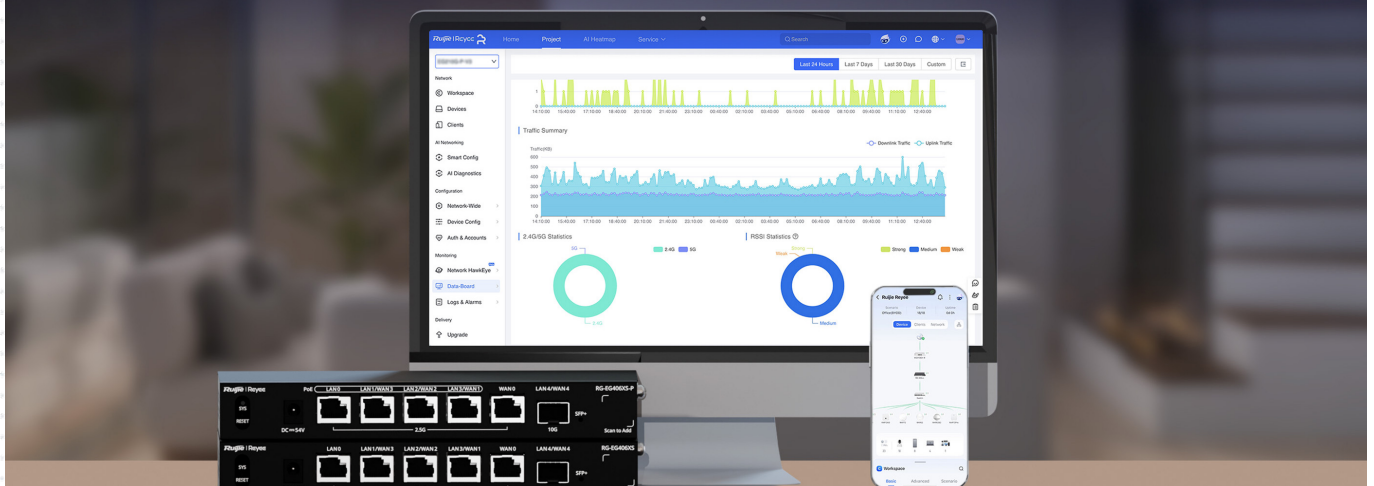


## Client Recognition & Flow Control



## Cloud, Make Your Business Easy

- Self-organizing network
- Quickly advanced service setup by app
- Scenario-based configuration guide
- Marketing portal authentication



\* Product images are computer-generated for illustration purposes only. Actual products may vary in details, features, or appearance.

# Specifications

Model		RG-EG406XS	RG-EG406XS-P
<b>Hardware Specifications</b>			
<b>Port Specifications</b>	Total number of optical ports	1	1
	Total number of RJ45 ports	5	5
	Number of 10/100/1000/2500BASE-T ports	5	5
	Number of 10GE SFP+ ports	1	1
	Maximum number of LAN ports	5	5
	Maximum number of WAN ports	5	5
	Number of fixed LAN ports	1	1
	Number of fixed WAN ports	1	1
	Number of LAN/WAN ports	4	4
<b>System Specification</b>	CPU	Quad-core processor, 2.0 GHz clock frequency per core	Quad-core processor, 2.0 GHz clock frequency per core
	Flash memory	256 MB	256 MB
	RAM	1 GB	1 GB
<b>Power Supply and Consumption</b>	Power supply	DC power adapter	DC power adapter
	Dimensions of the DC connector	Outer diameter: 5.5 mm (0.22 in.) Inner diameter: 2.1 mm (0.08 in.) Depth: 10.0 mm (0.39 in.)	Outer diameter: 5.5 mm (0.22 in.) Inner diameter: 2.1 mm (0.08 in.) Depth: 10.0 mm (0.39 in.)
	Maximum power consumption	9 W	9.2 W (with no PoE load) 129 W (with full PoE load)
	PoE budget	N/A	110 W
	Number of PoE Out ports	N/A	4
	PoE budget per port	N/A	30 W
	PoE power pins	N/A	1-2 (+), 3-6 (-)
	PoE Out standard	N/A	IEEE 802.3af/at (PoE/PoE+)

# Specifications

Model		RG-EG406XS	RG-EG406XS-P
<b>Hardware Specifications</b>			
<b>Interface Specifications</b>	LEDs	1 x system status LED 6 x Ethernet port LEDs	1 x system status LED 6 x Ethernet port LEDs
	Reset button	1	1
<b>Dimensions and Weight</b>	Package dimensions (W x D x H)	278 mm x 229 mm x 77 mm (10.94 in. x 9.02 in. x 3.03 in.)	278 mm x 229 mm x 77 mm (10.94 in. x 9.02 in. x 3.03 in.)
	Product dimensions (W x D x H)	202 mm x 108 mm x 28 mm (7.95 in. x 4.25 in. x 1.1 in.)	202 mm x 108 mm x 28 mm (7.95 in. x 4.25 in. x 1.1 in.)
	Shipping weight	1.28 kg (2.82 lbs)	1.56 kg (3.44 lbs)
	Weight	0.61 kg (1.34 lbs)	0.62 kg (1.37 lbs)
<b>Environment and Reliability</b>	Cooling	Natural cooling	Natural cooling
	Fan	Fanless	Fanless
	Mounting options	Desk/Rack Note: The device occupies 1 U of the rack space.	Desk
	Operating humidity	10% RH to 90% RH (non-condensing)	10% RH to 90% RH (non-condensing)
	Operating temperature	0°C to 40°C (32°F to 104°F)	0°C to 40°C (32°F to 104°F)
	Storage humidity	5% RH to 95% RH (non-condensing)	5% RH to 95% RH (non-condensing)
	Storage temperature	-40°C to +70°C (-40°F to +158°F)	-40°C to +70°C (-40°F to +158°F)
	Surge protection	Service port: ±4 kV for common mode Power connector: ±4 kV for common mode and ±2 kV for differential mode	Service port: ±4 kV for common mode Power connector: ±4 kV for common mode and ±4 kV for differential mode
<b>Software Specifications</b>			
<b>System Performance Capacity</b>	Maximum number of concurrent sessions	120000	120000
	Recommended number of concurrent clients	400	400
	Throughput	2500 Mbps	2500 Mbps
<b>Basic Configurations</b>	AC mode	Yes	Yes

# Specifications

Model		RG-EG406XS	RG-EG406XS-P
<b>Software Specifications</b>			
<b>Basic Configurations</b>	Automatically identifying the Internet access mode and obtaining IP addresses	Yes	Yes
	Automatically learning the PPPoE username and password of other routers	Yes	Yes
	Configuration backup	Yes	Yes
	Internet access mode	Static IP address Static IPv6 address Dynamic IP address Dynamic IPv6 address PPPoE	Static IP address Static IPv6 address Dynamic IP address Dynamic IPv6 address PPPoE
	Local upgrade	Yes	Yes
	Log upload	Yes	Yes
	Online upgrade	Yes	Yes
	Restoring factory defaults	Yes	Yes
	System language	English, Chinese, Turkish, Arabic, Vietnamese, Thai, Indonesian, Latin American Spanish, Brazilian Portuguese, Russian, French, German, European Spanish, Italian, and Polish	English, Chinese, Turkish, Arabic, Vietnamese, Thai, Indonesian, Latin American Spanish, Brazilian Portuguese, Russian, French, German, European Spanish, Italian, and Polish
<b>Authentication</b>	Portal authentication	Yes	Yes
	One-click authentication	Yes	Yes
	Password authentication	Yes	Yes
	SMS-based authentication	Yes	Yes
	Voucher authentication supported by Ruijie Cloud portal page	Yes	Yes
	Cloud portal authentication	Yes	Yes
	Local portal authentication	Yes	Yes
	QR code authentication	Yes	Yes

# Specifications

Model		RG-EG406XS	RG-EG406XS-P
<b>Software Specifications</b>			
<b>Authentication</b>	Custom portal page	Yes	Yes
	Account-based authentication supported by Ruijie Cloud portal page	Yes	Yes
	CHAP, MS-CHAPv1, MS-CHAPv2	Yes	Yes
	Delivery through Ruijie Cloud portal page	Yes	Yes
	802.1X authentication	Yes	Yes
	MAC address-based authentication	Yes	Yes
	PPPoE server	Yes	Yes
	Number of accounts supported by the PPPoE server	400	400
	Number of concurrent clients supported by the PPPoE server	200	200
	PAP	Yes	Yes
	RADIUS authentication	Yes	Yes
	RADIUS client	Yes	Yes
	RADIUS accounting based on time or traffic	Yes	Yes
	RADIUS flow control authorization	Yes	Yes
	RADIUS proxy server	Yes	Yes
RADIUS traffic quota authorization	Yes	Yes	
RADIUS user group authorization	Yes	Yes	
Third-party authentication	Yes	Yes	
<b>Ethernet Interface</b>	Avoiding IP address conflicts on WAN interfaces	Yes	Yes
	Load balancing	Yes	Yes

# Specifications

Model		RG-EG406XS	RG-EG406XS-P
<b>Software Specifications</b>			
<b>Ethernet Interface</b>	MAC address cloning	Yes	Yes
	Multiple WAN interfaces on the same network segment	Yes	Yes
	PPPoE clients	Yes	Yes
	Scheduled PPPoE reconnection	No	No
<b>Ethernet Switching</b>	Configuring multiple VLANs upon configuration delivery	No	No
	Link aggregation	No	No
	LLDP	No	No
	VLAN	Yes	Yes
	Maximum number of VLANs	128	128
	VLAN configuration supported on LAN ports	Yes	Yes
	Super-VLAN	No	No
	Configuring the same VLAN tag for multiple WAN ports	No	No
	VLAN priority	Yes	Yes
	Number of MAC address entries to be filtered	512	512
<b>Gateway Features</b>	WAN failover	Yes	Yes
	Application priority	Yes	Yes
	Application recognition	Yes	Yes
	Behavior management	Yes	Yes
	Flow control	Yes	Yes
	Time-based blocking policy IP address-based blocking policy	Yes	Yes
	Website filtering: custom URL	Yes	Yes
	Traffic audit	Yes	Yes

# Specifications

Model		RG-EG406XS	RG-EG406XS-P
<b>Software Specifications</b>			
<b>Gateway Features</b>	URL audit log	Yes	Yes
	Audit log server	Yes	Yes
	Audit log storage	No	No
	Uploading audit logs to a server	Yes	Yes
<b>IP Routing</b>	Application-based routing	No	No
	Bandwidth aggregation	Yes	Yes
	BGP	Yes	Yes
	BGP4	Yes	Yes
	BGP4+	Yes	Yes
	ECMP	No	No
	IPv4 static route	Yes	Yes
	IPv6 PBR	Yes	Yes
	IPv6 static route	Yes	Yes
	IS-ISv4	No	No
	IS-ISv6	No	No
	Load balancing based on flows	Yes	Yes
	Load balancing based on source IP addresses	Yes	Yes
	Load balancing based on the interface weight	Yes	Yes
	OSPFv2	Yes	Yes
OSPFv3	Yes	Yes	
RIP	Yes	Yes	

# Specifications

Model		RG-EG406XS	RG-EG406XS-P
<b>Software Specifications</b>			
<b>IP Routing</b>	RIPng	Yes	Yes
<b>IP Service</b>	3322.org	Yes	Yes
	ALG	Yes	Yes
	ARP binding	Yes	Yes
	Maximum number of ARP entries	1024	1024
	Proxy ARP	No	No
	Cloudflare	Yes	Yes
	DHCP client	Yes	Yes
	DHCP server	Yes	Yes
	Option 43	Yes	Yes
	Option 138	Yes	Yes
	Static/Dynamic NAT	Yes	Yes
	NAT-PT	No	No
	NAT loopback	Yes	Yes
	DNS client	Yes	Yes
	DNS proxy	Yes	Yes
	DNS server	Yes	Yes
	No-IP DNS	Yes	Yes
	GRE tunnel	No	No
	IPTV	Yes	Yes
	IPv4 ping	Yes	Yes
IPv6	Yes	Yes	

# Specifications

Model		RG-EG406XS	RG-EG406XS-P
<b>Software Specifications</b>			
<b>IP Service</b>	IPv6 ping	Yes	Yes
	Number of port mapping entries	512	512
	Port mapping	Yes	Yes
	DDNS	Yes	Yes
	Ruijie DDNS	Yes	Yes
	Alibaba Cloud DDNS	Yes	Yes
	UPnP	Yes	Yes
<b>MPLS</b>	MPLS L2VPN	No	No
<b>Network Management and Monitoring</b>	Web management	Yes	Yes
	Ruijie Cloud management	Yes	Yes
	Management on Ruijie Reyee App	Yes	Yes
	Remotely monitoring devices through Ruijie Reyee App	Yes	Yes
	Restarting devices through Ruijie Reyee App	Yes	Yes
	Upgrading device software version through Ruijie Reyee App	Yes	Yes
	FTP client (IPv4 address)	No	No
	FTP server (IPv4 address)	No	No
	TFTP client (IPv4 address)	Yes	Yes
	TFTP server (IPv4 address)	No	No
	HTTPS login	Yes	Yes
	NTP client	Yes	Yes
	NTP server	No	No
Scheduled device restart	Yes	Yes	

# Specifications

Model		RG-EG406XS	RG-EG406XS-P
<b>Software Specifications</b>			
<b>Network Management and Monitoring</b>	SNMPv1, v2c, and v3	Yes	Yes
	SON	Yes	Yes
	Fault diagnosis	Yes	Yes
	Telnet	No	No
	Web login information	Default IP Address: 192.168.110.1 Default Password: admin	Default IP Address: 192.168.110.1 Default Password: admin
<b>Reliability</b>	Stacking	No	No
	VRRP	No	No
<b>SD-WAN</b>	SD-WAN	Yes	Yes
	SD-WAN performance	750 Mbps	750 Mbps
	Number of tunnels supported by SD-WAN	300	300
	Maximum number of SD-WAN branches	100	100
	Active/Standby mode (automatically switching to the standby interface when the active interface fails)	Yes	Yes
<b>Security</b>	ACL	Yes	Yes
	IPv6 ACL	Yes	Yes
	DHCP snooping	No	No
	Malformed packet attack defense	Yes	Yes
	Fragmentation attack defense	Yes	Yes
	Teardrop attack defense	Yes	Yes
	LAND attack defense	Yes	Yes
	SYN flood attack defense	Yes	Yes

# Specifications

Model		RG-EG406XS	RG-EG406XS-P
<b>Software Specifications</b>			
<b>Security</b>	Smurf attack defense	Yes	Yes
	IP attack defense	Yes	Yes
	Disabling ping	Yes	Yes
	Stateful firewall	Yes	Yes
	IP-MAC binding	Yes	Yes
	Network sharing prevention	Yes	Yes
	Security log	Yes	Yes
	Security zone	Yes	Yes
	User group-based connection limiting	Yes	Yes
<b>VPN</b>	IPsec VPN	Yes	Yes
	IPsec VPN bandwidth	700 Mbps	700 Mbps
	Maximum number of branches in IPsec VPN networking	100	100
	L2TP VPN	Yes	Yes
	L2TP VPN bandwidth	850 Mbps	850 Mbps
	Maximum number of branches in L2TP VPN networking	100	100
	OpenVPN	Yes	Yes
	OpenVPN bandwidth	200 Mbps	200 Mbps
	Maximum number of branches in OpenVPN networking	100	100
	PPTP VPN	Yes	Yes
PPTP VPN bandwidth	850 Mbps	850 Mbps	

# Specifications

Model		RG-EG406XS	RG-EG406XS-P
<b>Software Specifications</b>			
<b>VPN</b>	Maximum number of branches in PPTP VPN networking	100	100
	SSL VPN	No	No
	Easy VPN 1.0	No	No
	Number of VPN accounts for L2TP, PPTP, and OpenVPN	400	400
	WireGuard server	Yes	Yes
	WireGuard client	Yes	Yes
	WireGuard performance	750 Mbps	750 Mbps
	Number of concurrent tunnels supported by the WireGuard server	100	100
<b>WLAN</b>	Maximum number of APs (AC mode)	750	750
	Maximum number of devices that can be managed	128	128
	Wireless Intelligent Optimization (WIO)	Yes	Yes
<b>Package Contents</b>			
<b>Accessories</b>	Rack-mount bracket	2	N/A
	Power adapter	1	1
	Power cord	N/A	31.49 in. x 1 pieces
	Rubber pad	4	4
	Screw	6 x M3 x 6 mm cross recessed countersunk head screws	N/A
<b>Manual</b>	User Manual	1	1
	Warranty Card	1	1

*Ruijie* | ReYee

 Redefine your easy network



**Ruijie Networks Co., Ltd.**

Official Website: <https://Reyee.Ruijie.com>