

# Mini Dome Camera

## XMRDOME1080

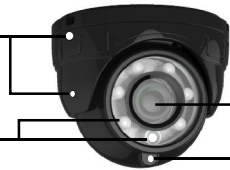
### Advantages of Mini Conch Dome Camera

Specialized Structure for Vehicle:  
easy assembly and disassembly;  
lockable angle; anti-vibration

Anti-jamming & Low-power Design:  
avoid vehicle circuit interference;  
support high temperature on vehicle  
roof; reduce power consumption by  
30%.

Adapt to Volatile Environments:  
ultra-wide color temperature for  
color fidelity; intelligent night  
vision; clear fill-in light image  
without exposure.

Audio Band-pass Filter:  
reduce vibration noise of vehicle  
engine and frame.



3.6mm



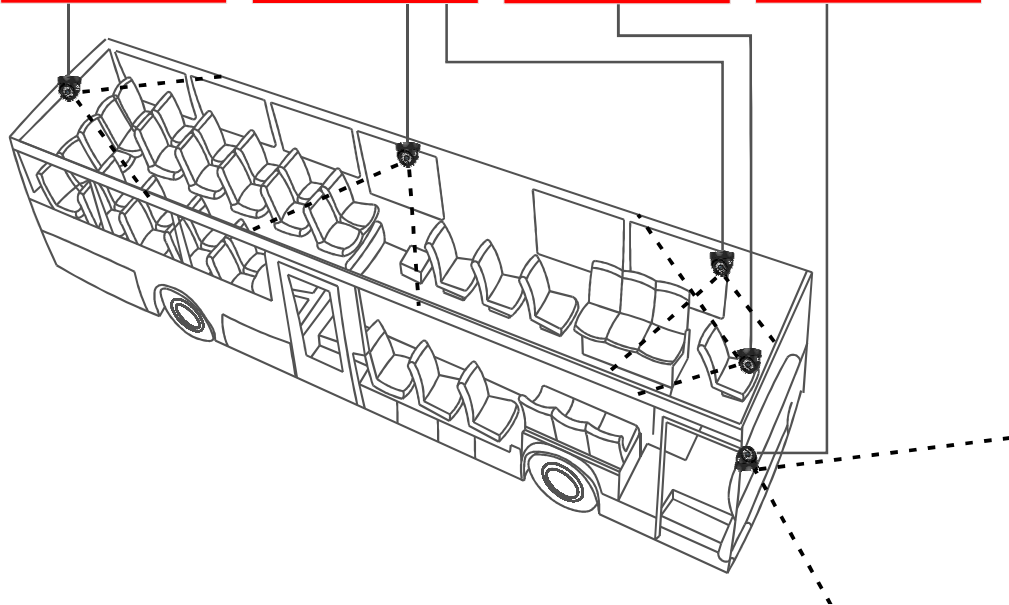
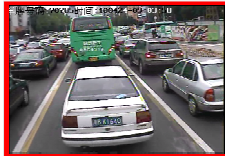
2.8mm



3.6mm



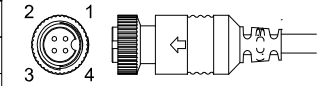
3.6mm



### Specifications

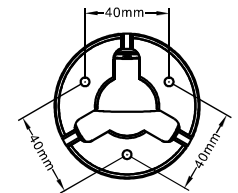
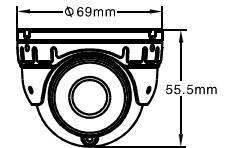
Sensor	1/2. 8" Sony CMOS
Resolution	1920*1080
Minimum Illumination	0lux when IR ON
Sync System	Inter-sync
Scanning System	2:1 Interlaced
S/N	≥52db(AGC OFF)
Lens	2.8mm
Electronic Shutter	Auto
White Balance Mode	Auto
Color to Black	Ext
Gamma Correction	0.45
Audio	Yes (Support Band-pass Filter)
Video Output	AHD coaxial hd standard, 4 pin air line
IR	6 IR LEDs
Power Supply	12V DC ±10%
Consumption (Max.)	120mA/DC12V(IR ON)
Working Temperature	-20°C ~ +55°C

Video Output:  
Aviation Plug Connector



Aviation RS765-4 (Female)

1---12VDC(+) 3---AUDIO  
2---12GND(-) 4---AHD VIDEO



### Attentions

- Please carefully read this manual before you power on and use the camera.
- Do not take apart the camera; if any problems, please contact us or local distributors.
- Please pay attention to the demands of working temperature and performance environment of the camera; do not use it in either too low or too high temperature – it only works from -20°C to +55°C (From -4F to 131F); avoid water or rain; minimize dust or moisture erosion, so as not to damage camera or affect its functions.
- Avoid direct sunlight when the camera is in performance, otherwise the CCD would be damaged.
- Do not touch the surface of the lens; use cotton swab or lens paper to wipe dirt; if difficult, use deluted water with neutral detergent to wipe it out; never use corrosive solution.
- Never install this camera near / on a radiator or a heating resistor.
- When you finish installing the camera and adjusting the angle, please appropriately lock the screws beside the lens, so that the driver and conductor won't inadvertently touch and change the monitoring angle.
- When the integral installation is finished, please make sure that it won't fall down and then hurt people or damage goods caused by vehicle vibration.

# Mini Dome Camera

## XMRDOME1080

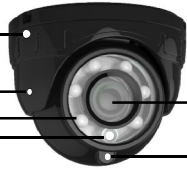
### Advantages of Mini Conch Dome Camera

Specialized Structure for Vehicle:  
easy assembly and disassembly;  
lockable angle; anti-vibration

Anti-jamming & Low-power Design:  
avoid vehicle circuit interference;  
support high temperature on vehicle  
roof; reduce power consumption by  
30%.

Adapt to Volatile Environments:  
ultra-wide color temperature for  
color fidelity; intelligent night  
vision; clear fill-in light image  
without exposure.

Audio Band-pass Filter:  
reduce vibration noise of vehicle  
engine and frame.



3.6mm



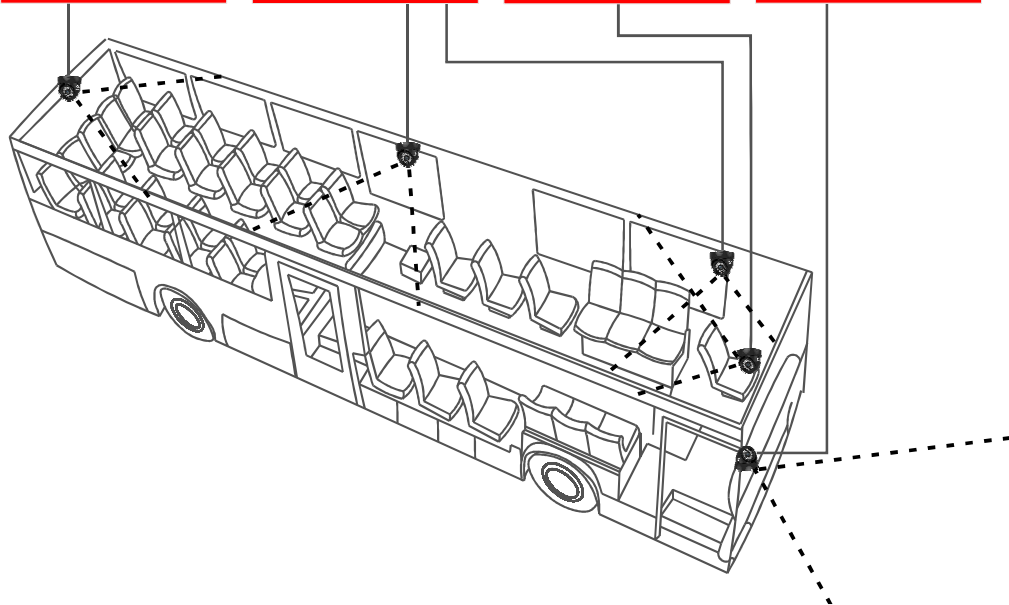
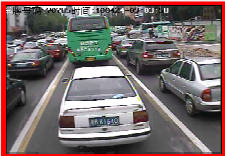
2.8mm



3.6mm



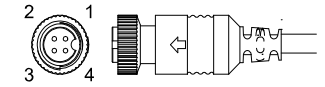
3.6mm



### Specifications

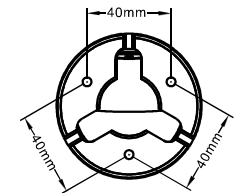
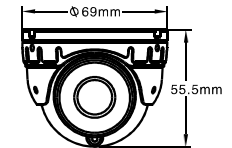
Sensor	1/2. 8" Sony CMOS
Resolution	1920*1080
Minimum Illumination	0lux when IR ON
Sync System	Inter-sync
Scanning System	2:1 Interlaced
S/N	≥52db(AGC OFF)
Lens	2.8 mm
Electronic Shutter	Auto
White Balance Mode	Auto
Color to Black	Ext
Gamma Correction	0.45
Audio	Yes (Support Band-pass Filter)
Video Output	AHD coaxial hd standard, 4 pin air line
IR	6 IR LEDs
Power Supply	12V DC ±10%
Consumption (Max.)	120mA/DC12V(IR ON)
Working Temperature	-20°C ~ +55°C

Video Output:  
Aviation Plug Connector



Aviation RS765-4 (Female)

1---12VDC(+) 3---AUDIO  
2---12GND(-) 4---AHD VIDEO



### Attentions

- Please carefully read this manual before you power on and use the camera.
- Do not take apart the camera; if any problems, please contact us or local distributors.
- Please pay attention to the demands of working temperature and performance environment of the camera; do not use it in either too low or too high temperature – it only works from -20°C to +55°C (From -4F to 131F); avoid water or rain; minimize dust or moisture erosion, so as not to damage camera or affect its functions.
- Avoid direct sunlight when the camera is in performance, otherwise the CCD would be damaged.
- Do not touch the surface of the lens; use cotton swab or lens paper to wipe dirt; if difficult, use deluted water with neutral detergent to wipe it out; never use corrosive solution.
- Never install this camera near / on a radiator or a heating resistor.
- When you finish installing the camera and adjusting the angle, please appropriately lock the screws beside the lens, so that the driver and conductor won't inadvertently touch and change the monitoring angle.
- When the integral installation is finished, please make sure that it won't fall down and then hurt people or damage goods caused by vehicle vibration.