

LockerPad-G4 Pro

Reliable and Secure Solution for Your Storage

ZKTeco developed a networked electronic delivery locker module, LockerPad-G4 Pro, offering a reliable, secure, and convenient locker system.

LockerPad-G4 Pro integrates with ZKBio CVSecurity and adopts multiple authentication methods, including facial recognition, and multi-tech card verification, to unlock the locker without a key, ensuring storage safety and enhancing convenience.

The LockerPad-G4 Pro embedded into a 7 inches colour touch screen display, creating a easy-to-manage self-service terminal for parcel and personal belongings storage. In addition, LockerPad-G4 Pro supports digital advertisement (image & video), which can drive foot traffic and sales effectively.

ZKTeco also provides an LCDP tool which is used for 3rd party applications integration. It includes simplified bottom hardware interface, algorithm interface and some upper business logic and configuration, which can make development more easier and more efficient.

The LockerPad-G4 Pro is an easy solution and tackles the problem of people carrying bulky items.

- Supports Visible Light facial recognition.
- Support anti-spoofing algorithm against photos attack, videos attack and 3D mask attack.
- Smart light design, adaptable to different light environment.
- Contactless facial recognition can effectively enhance the user experience.



QR Code Verification



Wide Pose Angle Acceptance



Speedy Facial Recognition



New Height of Anti-Spoofing

Compatible with
ZKBio CVSecurity



Card



QR Code



Face



AD Management



User-defined Roles



Storage-Pickup Records

A Unified Platform

• The Past:

Different types of devices in different modules with decentralized management.

• The Present:

As an unified security management platform, ZKBio CVSecurity can manage multiple lockers simultaneously. Locker, Attendance, Access control, Parking and other functional modules are integrated in a platform.

Business Value

LockerPad-G4 Pro has a 7-inch touchscreen and supports digital advertisements placement and push notifications, which can improve foot traffic and help achieve business goals.

- Supports PNG, JPG, JPEG, GIF format for image advertising resources.
- Supports 3GP, MP4, MKV, WEBM format for video advertising resources.
- Support maximum 7*24 hours of playing digital advertisement with no interruption.

Green Solutions

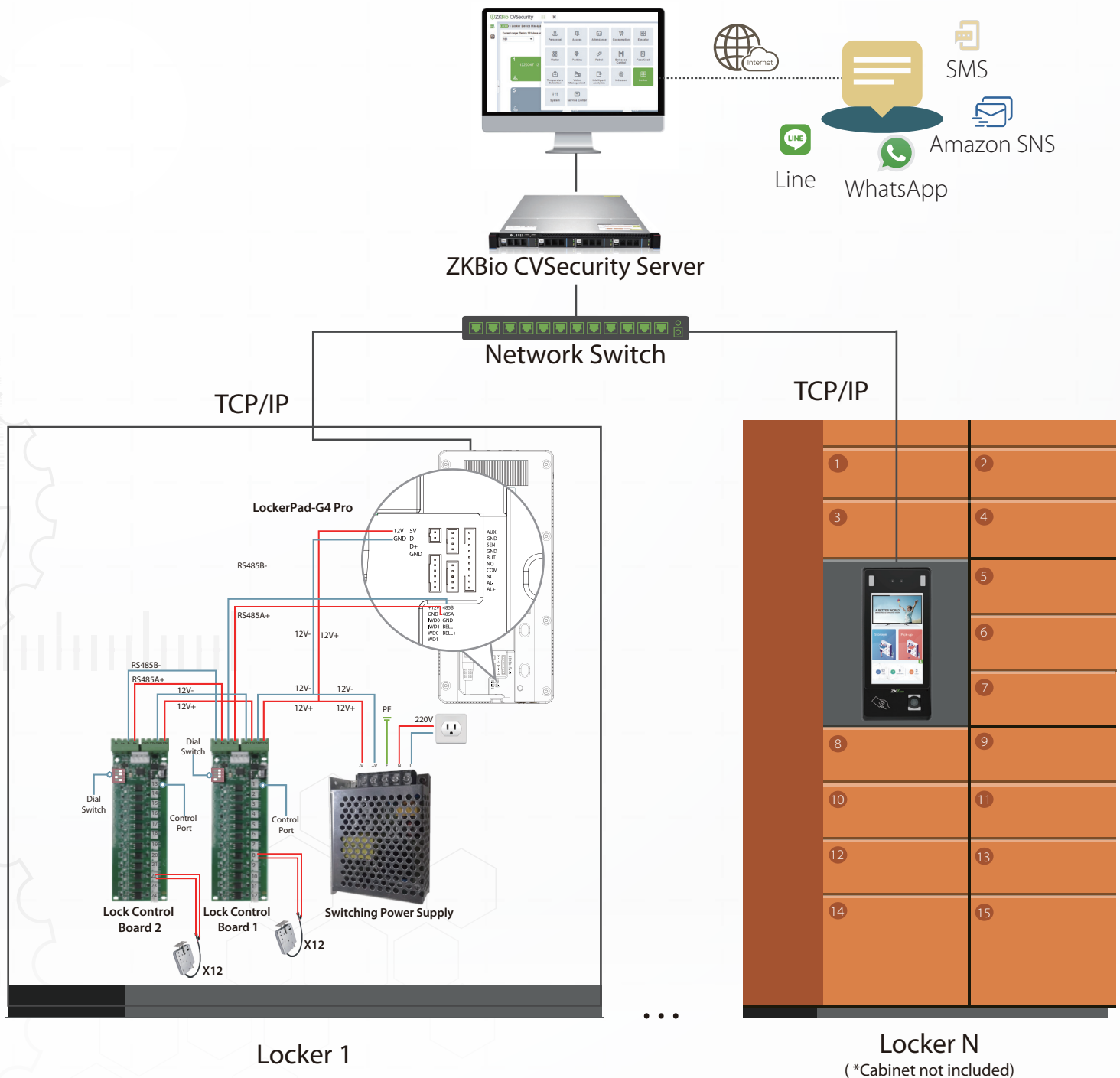
The LockerPad-G4 Pro is energy efficient and adopts facial verification to unlock the cabinet, reducing staffing costs and the cost of consumables such as printer paper.

Configuration

ZKBio CVSecurity platform offers a user-centric and customizable locker management system. Currently, the LockerPad-G4 Pro controls the cabinet lock via a control board, and each LockerPad-G4 Pro can connect up to 8 control boards.

In addition, each control board contains 12 control ports, which can control a maximum of 12 cabinets. LockerPad-G4 Pro locker management system is accessible online through the web on a PC. The administrator can control and arrange the usage of cabinets by assigning access rights to fixed or temporary users. The administrator can also view and collect real-time data on the use of cabinets, for example, the number of open or locked cabinets, available or occupied cabinets, and blocked or available cabinets.

Moreover, LockerPad-G4 Pro provides the cabinet unlock function in an emergency for safety checks. The administrator can open all the cabinets with one click in the operating system.



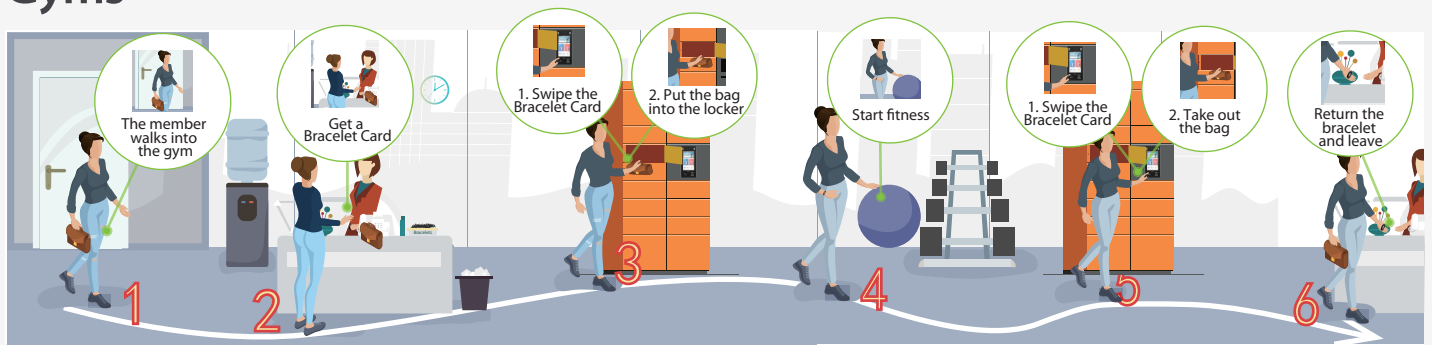
Specifications

Model	LockerPad-G4 Pro
Capacity	
Cabinet Capacity	96 (*support connection with up to 8pcs Lock Control Board through RS485 connection)
Face	50,000 (1 : N)
Card	50,000
Transactions	100,0000
System Parameters	
CPU	64bit Octa-core Customized Computer Vision 1.8GHz CPU
Memory	2G RAM / 16G ROM
Operating System	Android 9.0
Algorithms	ZKFace 5.6.2
Communication	TCP/IP, USB Host, RS232, RS485, Wiegand Input, Wiegand Output, Wi-Fi, WLAN: 2.4GHz, 4G(Optional)
Software	ZKBio CVSecurity
Function Parameters	
Standard Firmware Functions	Multiple people and one cabinet setting, Temporary takeout settings
Facial Recognition	Facial Recognition Speed: Within 1s Facial Recognition Distance: 20cm to 50 cm
Card Types	ID Card@125 kHz (Standard) IC Card@13.56 MHz (Optional)
Operating Environment	
Operating Temperature	-20°C to 55°C (-4°F to 131°F)
Operating Humidity	10% to 90%
Storage Temperature	-15°C to 55°C (5°F to 131°F)
Storage Humidity	<90%
Interface Parameters	
Peripheral interface	USB*1, Network Port*1, RS485*1, TXD*2, RXD*2, INWD*1, WD*1, AUX*1, SEN*1, BUT*1, NO*1, NC*1, COM*1, AL*1
Other Parameters	
Screen	7-inch LCD Touch Screen (720*1280 pixels)
Camera	2MP Binocular Camera
Power Supply	DC 12V 3A
Dimensions	264mm*120mm*51mm (9.69in*4.72in*2in)
Certification	CE, FCC, ISO9001,ISO14001,ISO20000

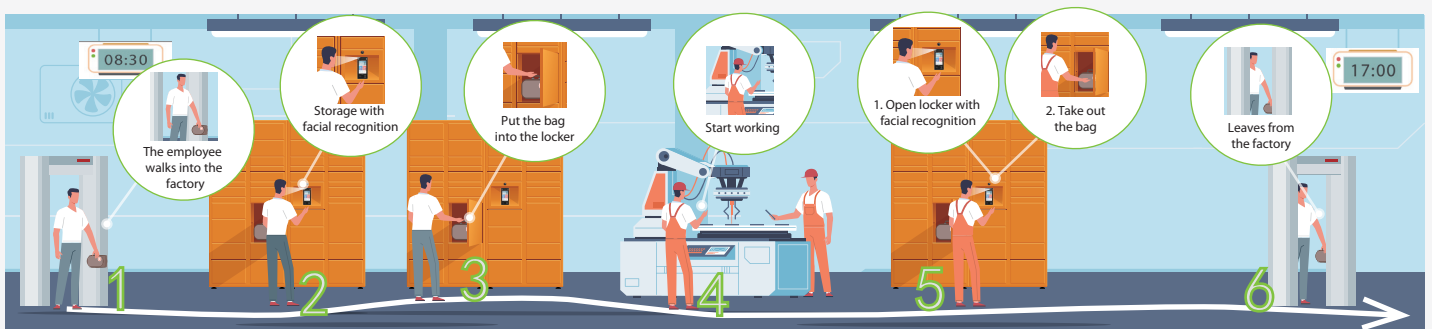
Model	Lock Control Board
Power Supply	DC 12V, 1A~1.5A
Communication	RS485
Outputs	12* Relay
Supported Terminal	LockerPad-G4 Pro

Application (Preset Scenarios)

Gyms



Factories



Supermarkets



Offices

