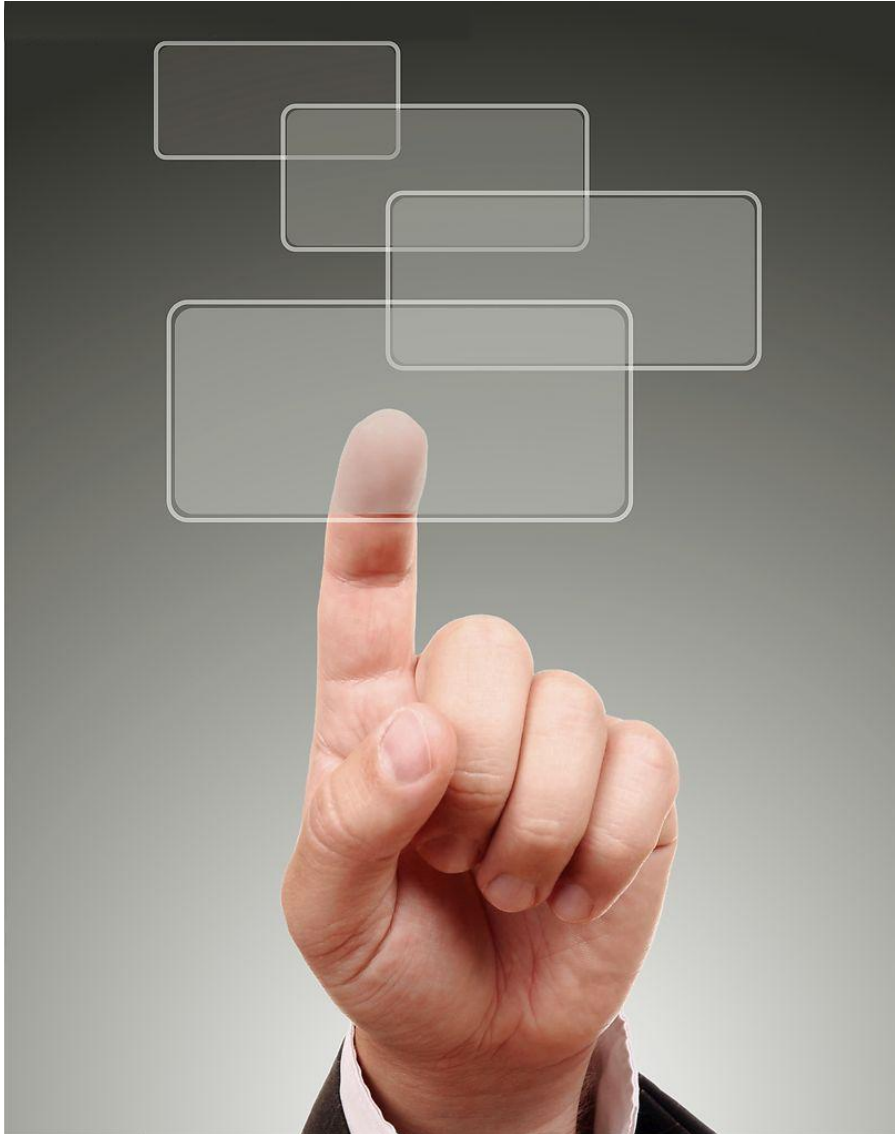




***HIK*VISION**

LPR Camera Installation and Configurations Guide



LPR Camera installation

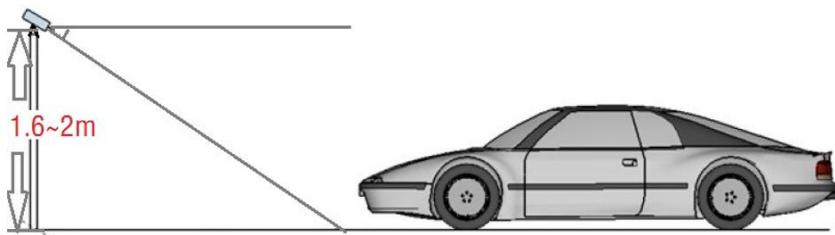
LPR camera configurations

Other cases

The camera installation

1, For entrance surveillance:

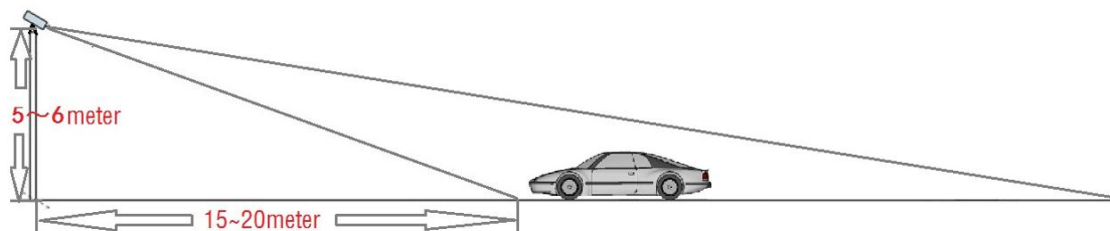
Camera should be installed at **2 meters height**



2, For Road Traffic Surveillance:

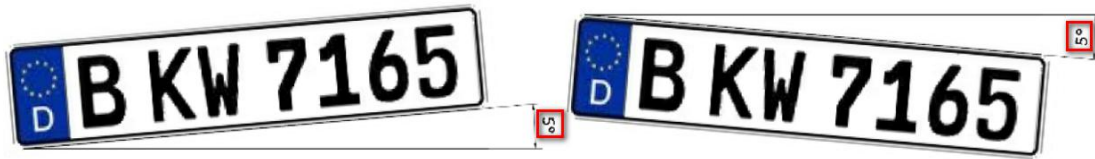
Camera should be installed at **5~6 meters height**

The video bottom edge target should be about **15~20meters** far from the camera pole.



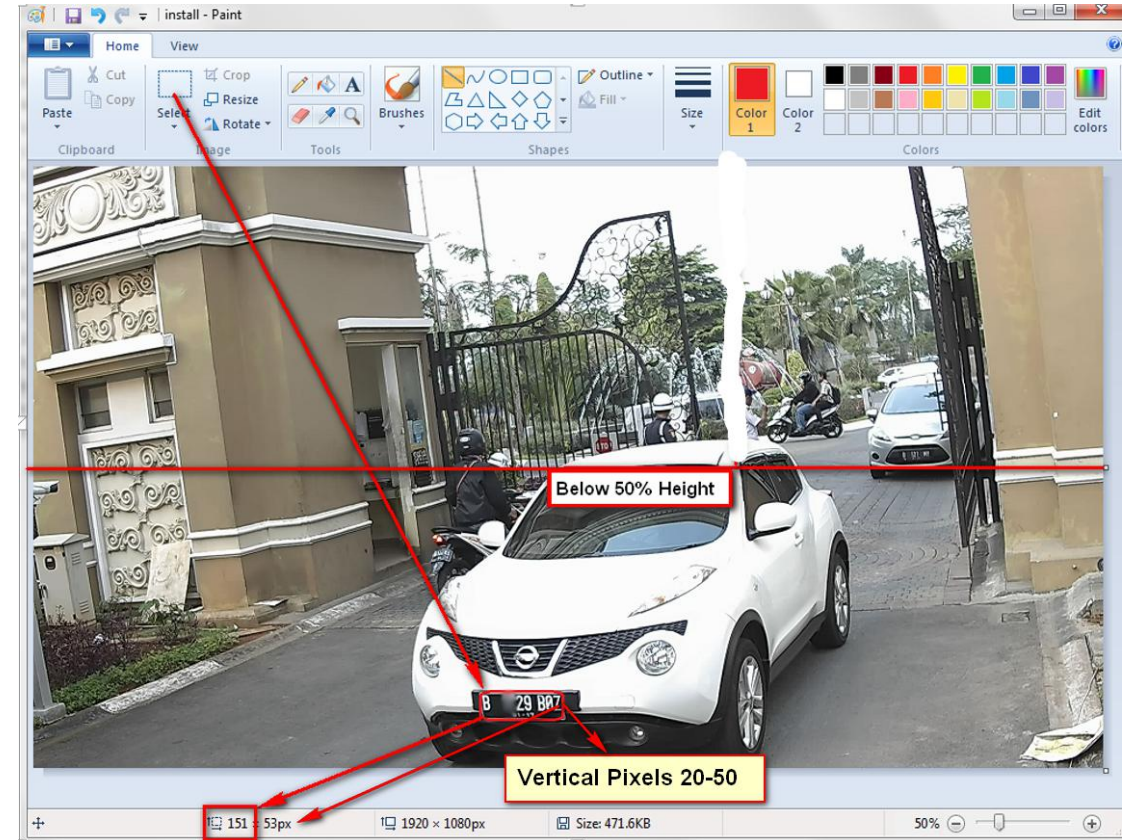
The camera installation

3, License plate tilt angle must be within ± 5 degrees.



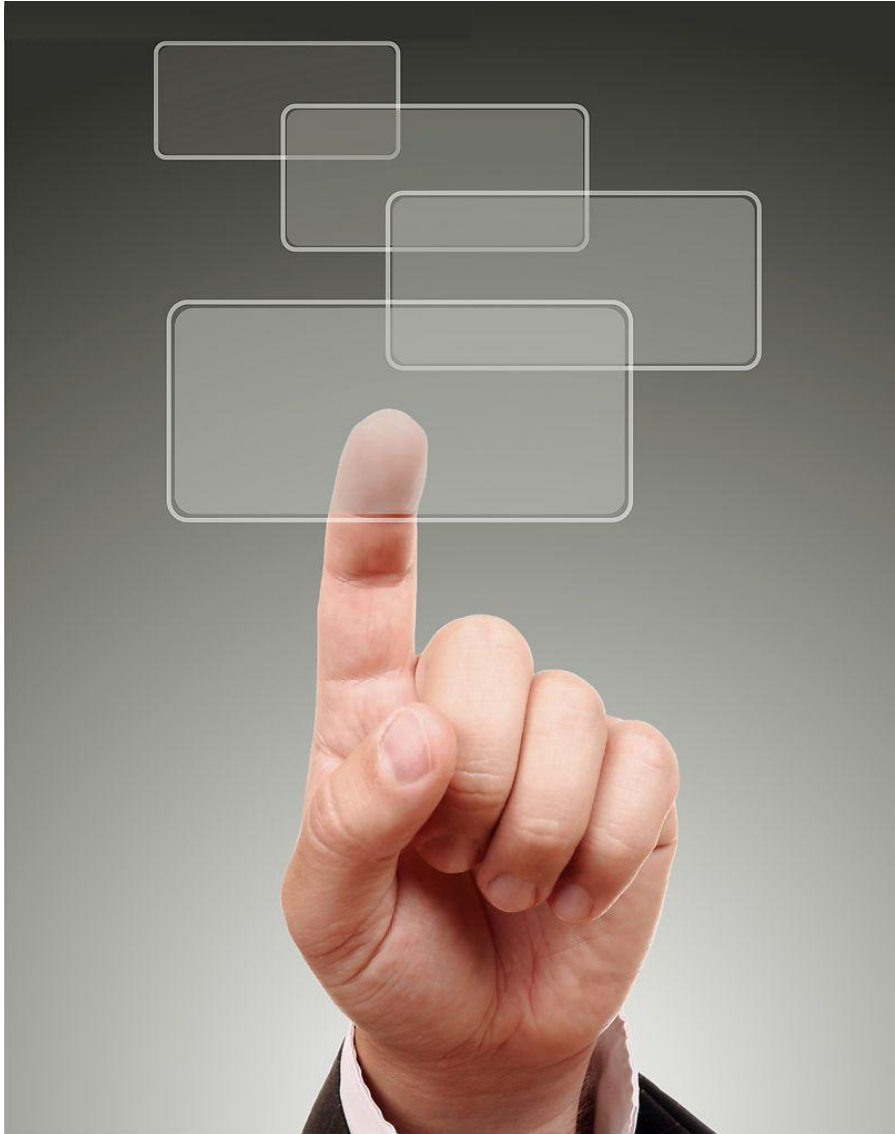
Solution: Keep the camera in horizontal level with the ground

4, License plate vertical pixels must be 20-50 px



“Edit” the picture → ”Select” → check the vertical pixels

Solution: adjust the lens focus distance !



LPR Camera installation

LPR camera configurations

Other cases

Camera configurations

Example:



WDR OFF

Default shutter time is 1/150

Default gain is 20

Default setting

Configuration 1-- Gain (WDR off)



Gain = 20



Gain = 30

Parking system Gain 20-30



Gain = 40



Gain = 50

Configuration 1-- Gain (WDR On)



Gain = 20



Gain = 30

Parking system Gain 20-30



Gain = 40



Gain = 50

Configuration 2--WDR (OFF VS ON)



WDR OFF

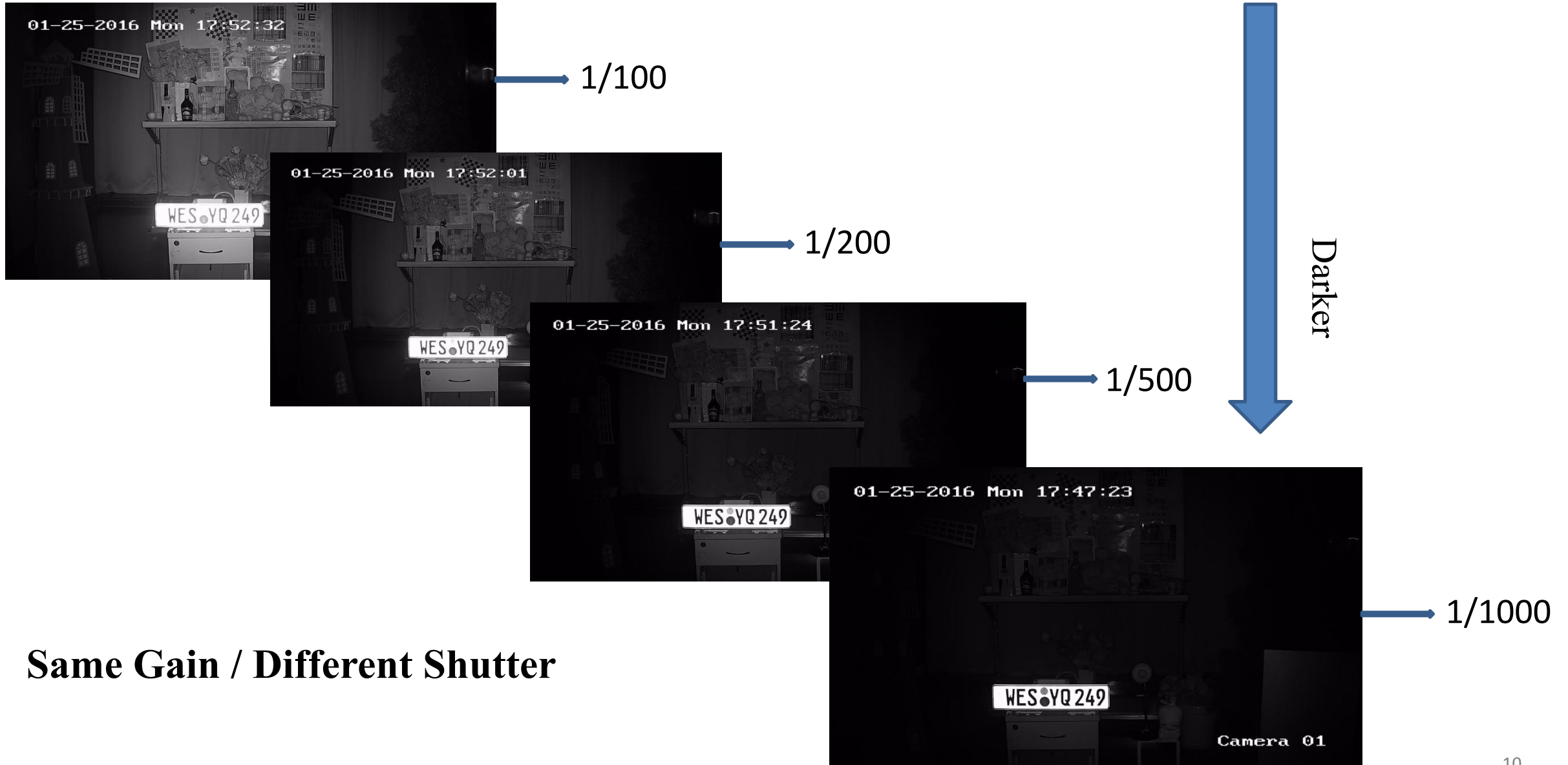


WDR ON

Tips:

- 1、 The contrast of license plate with **WDR OFF** is better than the **WDR ON**.
- 2、 The license plate number with **WDR OFF** looks clear, that's good for LPR.
- 3、 **More details** with WDR ON than WDR OFF.

Configurations 3--Shutter



Same Gain / Different Shutter

Configurations 3--Shutter



Shutter 1/25



Shutter 1/1000

- 1、 Long exposure time, the moving license plate is **fuzzy** .
- 2、 Short exposure time, the moving license plate is clear. But it's very **dark**.



Low speed(<30km/h)



Shutter 1/150-1/250

Parking System -- Projects

Configurations 3--Shutter



Medium speed (30-60km/h)



Shutter 1/250-1/500

Street Environments

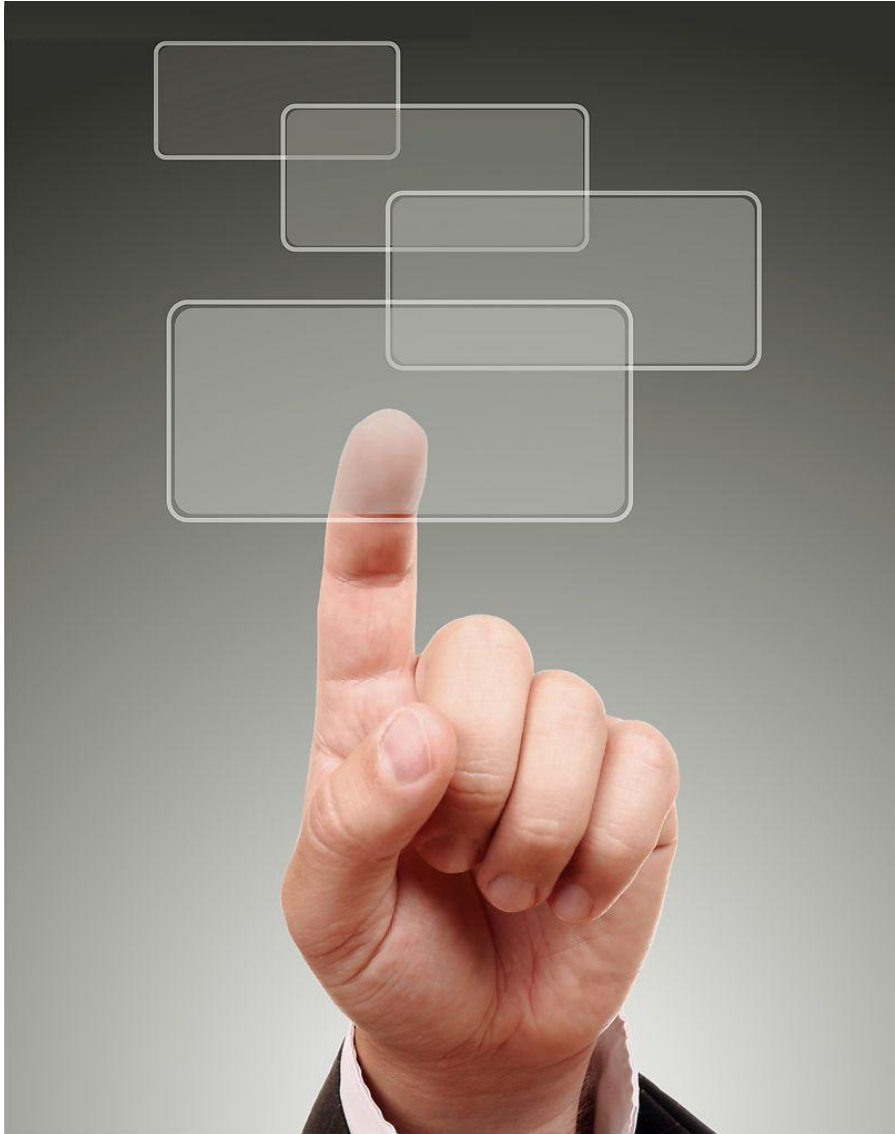


High speed (>60km/h)



Shutter 1/500-1/1000

High Way Environments



LPR Camera installation

LPR camera configurations

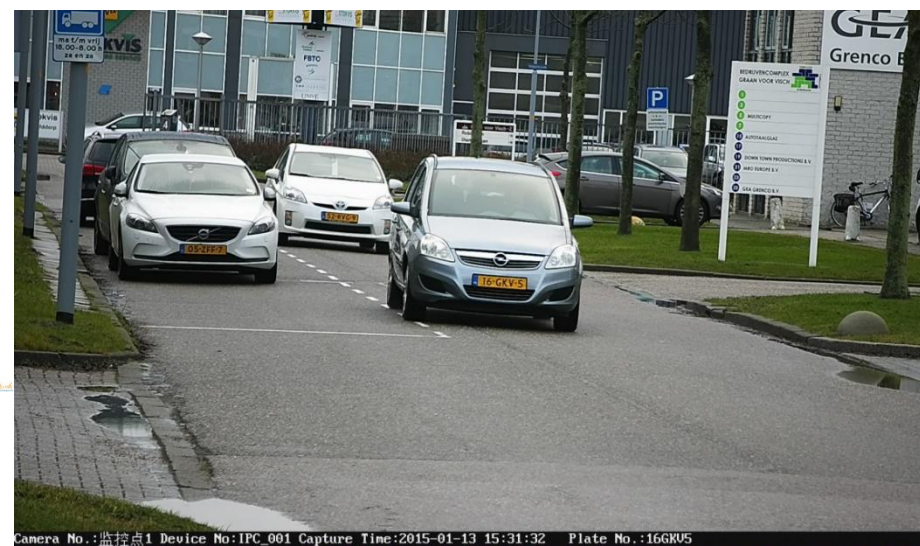
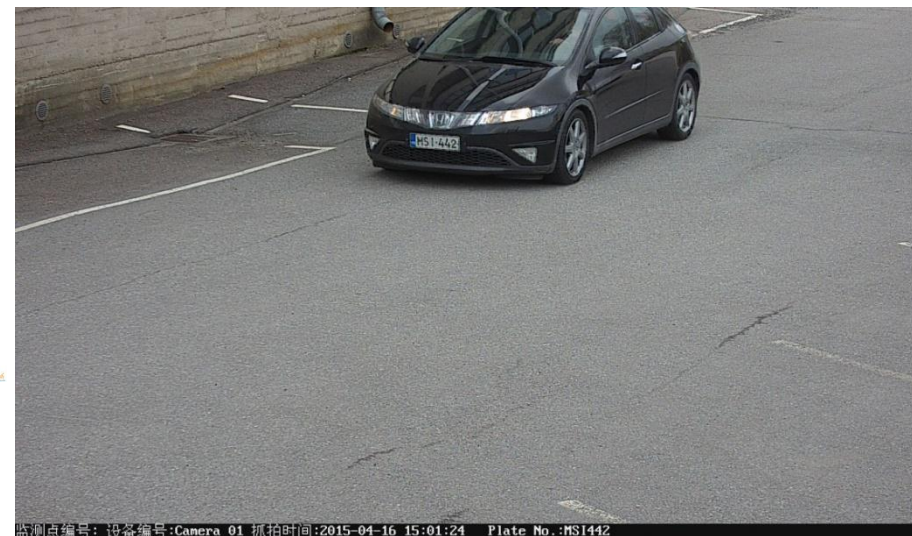
Other cases

License Plate Angle < 5 degrees



Keep the camera in the horizontal level with the ground

License Plate Vertical pixels < 20 pixels (better from 20-50)



Adjust the lens focus distance



Thanks!