

Cerradura Digital

Manual de usuario

Se espera que el usuario lea cuidadosamente el manual antes del uso del equipo.

Premium Smart Digital Doorlock
New Concept Digital Doorlock

A convenient digital door lock



Door-opening function with the use of password, card

You can use your password and card key conveniently and freely make settings and changes.



Fire safety function

It operates at a certain heat (around 65 degree Celsius) in case of fire, which may somewhat vary by installation environment.



External double locking device

While you are out for long hours, operation of the indoor buttons can be stopped, through which theft through the milk drop is prevented.



Connection to home network system (optional)

Door-opening is possible indoors through a connection to the remote controller or wireless transmitter.



Alarm function in case of housebreaking & theft

If a wrong password is entered 3 or more times, all the operation is stopped for 30 seconds, and forced door-opening results in an alarm sounding.

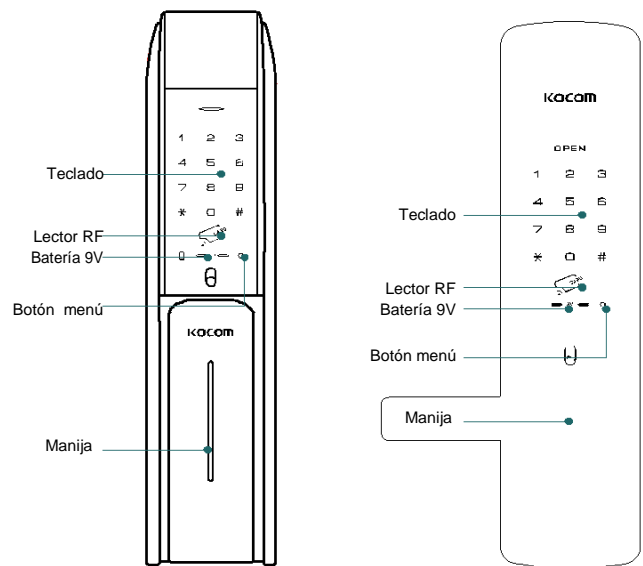


Self-diagnosis function

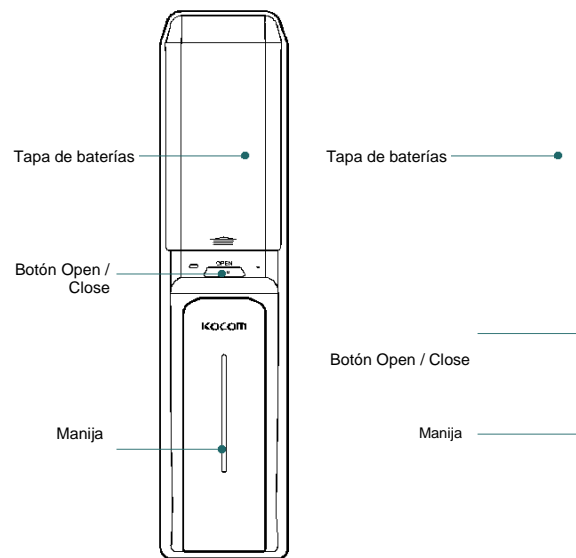
The door lock itself diagnoses defect, and informs you of malfunction or the battery change time through the alarm.

Be sure to make door open manually in emergency case

This product can be damaged when the door lock gets broken



Main Key(OUT) Main Key(OUT)



Main Key(IN)

Main Key(IN)

Contenido

Información general · 3

Precauciones · 4

Como usar · 5

Manual rápido · 11

Características de producto · 12

Garantía para defectos de fábrica · 13

Warranty Card(for Company) · 14

Precauciones

Por favor lea las precauciones para su cuidado!



Peligro

El equipo no se debe desarmar por ningún motivo

- El producto esta ensamblado de forma muy precisa y complicada.
- El desarmar el equipo puede llegar a ser peligroso aparte de causar comportamientos no deseados.
- Consumer's responsibility in case of random dismantlement



Precaución

Prohibido usar agua para limpiar

- Está prohibido usar agua para limpiar ya que puede dañar los circuitos electrónicos.
- Se puede usar una toalla seca para limpiar el producto.



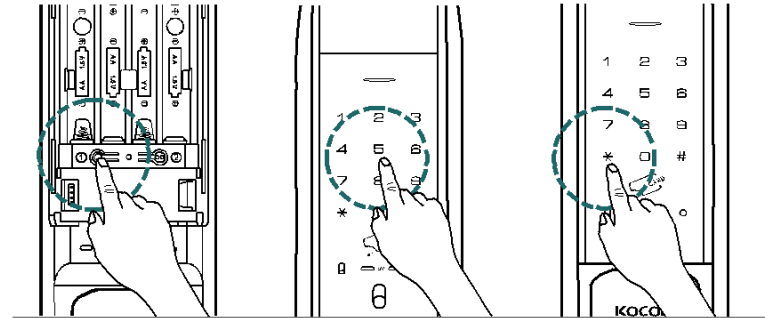
WARNING

Las medidas a tomar cuando se Descarga la batería son las siguientes

- El periodo de vida de las baterías es de 4 a 8 meses. Esto basado en un uso de 10 veces al día. Exchange the battery at that time.
- Use 4 baterías alcalinas de 1.5v AA. (Baterías recargables no son compatibles)
- En caso de que las baterías se descarguen completamente, es posible encender la chapa conectando una batería alcalina de 9V por el exterior.

Como usar

1. Registro de contraseña



Abra la tapa de las Baterías y presione El botón izquierdo

Coloque su contraseña (contraseña de 3~12 dígitos)

Presione * con esto se completa el procedimiento

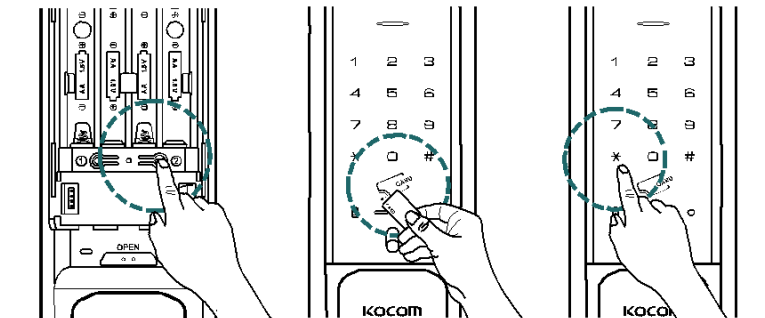
Después de registrar la contraseña hay que probar que funcione



Advertencia

1. Cuando se registra una contraseña o se cambia, es posible que la puerta quede Cerrada por error, asegúrese de abrir la puerta y tener consigo una llave o tarjeta de emergencia.
2. Para las contraseñas use el número de 3 – 12 dígitos sin usar el * o #
3. Si se agregan nuevas contraseñas, las que ya existan se borrarán.
4. Todos los productos de fábrica tienen las contraseñas 1, 2, 3, 4, 5, 6, 7, 8, 9, 0 y 1, 2, 3, 4.
5. Asegúrese que el usuario coloque las contraseñas el mismo, cuando se instala el equipo por primera vez.

2. Registro de tarjetas



Abra la tapa de las Baterías y presione El botón derecho

Pase la tarjeta por el lector RF de la chapa (Max 50 tarjetas disponibles)

Presione* esto completa el procedimiento

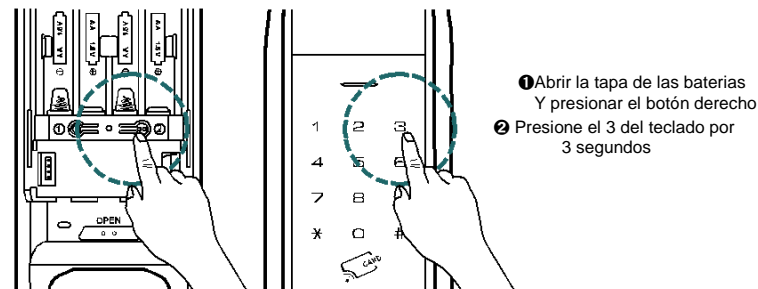


WARNING

For your safety, we recommend you to use all RF-card and Tag that manufacturer provide with. KOCOM confirms that "ISO 14443 Type A" certified RF-card and Tag to be used with the Digital door locks. We, KOCOM, are not responsible with the cases that customers use other type RF-card and Tag, credit card, Smart card and Mobile phone.

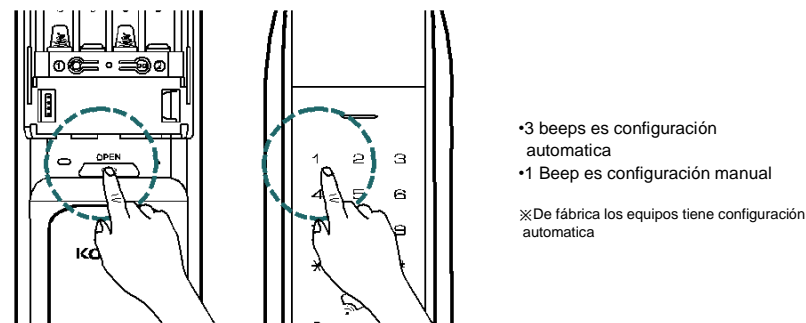
Como usar

3. Borrar todas las tarjetas



- ❶ Abrir la tapa de las baterías
Y presionar el botón derecho
- ❷ Presione el 3 del teclado por
3 segundos

4. Configuración de Auto-Cierre / Cierre-Manual



- 3 beeps es configuración automática
- 1 Beep es configuración manual
- ※De fábrica los equipos tiene configuración automática

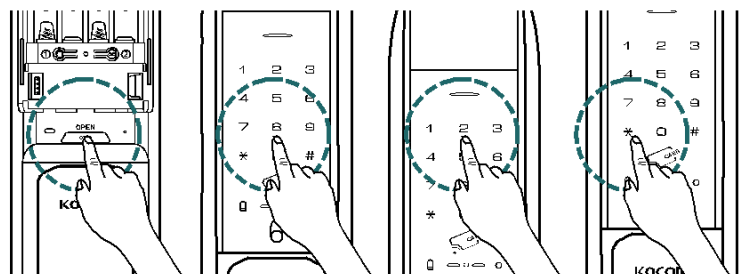
Auto-Cierre

Presionar el botón "OPEN / CLOSE" por 5seg y presionar el número 1. Se escuchara un sonido largo de confirmación

Cierre Manual

Presionar el botón "OPEN / CLOSE" por 5seg y presionar el número 1. Se escuchara un sonido corto de confirmación

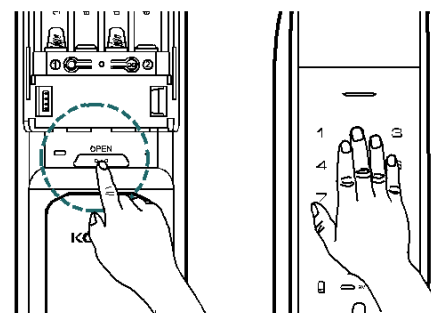
5. Tiempo de Auto-Cierre



Auto-close setting

Presione "OPEN/CLOSE" por 5seg. Presione el número 8.
Presione un número de 1 a 8 y termine presionando la tecla "*" para terminar. El valor de fábrica es 2seg.

6. Como cerrar manualmente

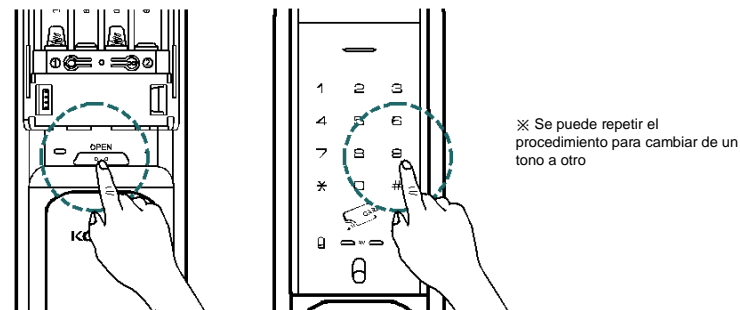


Cerrar desde interior
Presionar el botón OPEN

Cerrar desde exterior
Cierre la puerta y ponga la palma en el teclado numérico por un segundo

Funciona incluso con la configuración de auto cierre

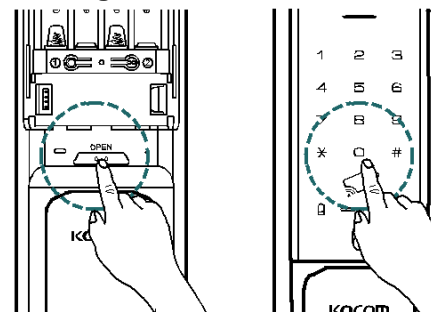
7. Configuración tono Alto / Bajo



※ Se puede repetir el procedimiento para cambiar de un tono a otro

- ❶ Presionar "OPEN / CLOSE" por 5seg
- ❷ Presionar el número 9 para cambiar el tono

8. Configuración Buzzer / silencio

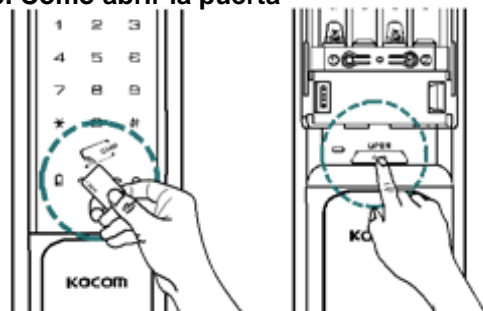


- ❶ Presione "OPEN / CLOSE" Por 5seg
- ❷ Presione la tecla 0 para cambiar a modo silencio

※Se puede cambiar a modo buzzer repitiendo el procedimiento.

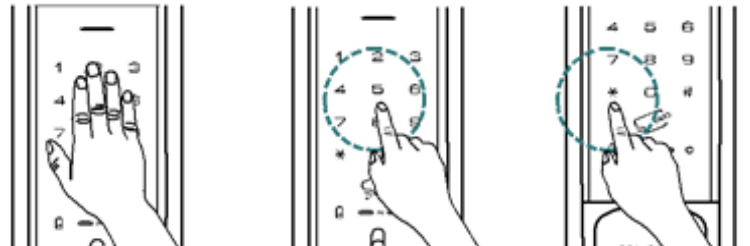
Como usar

9. Como abrir la puerta



Abrir puerta desde interior
Presione "OPEN / CLOSE" 1 vez
O jale o empuje la manija para abrir la puerta

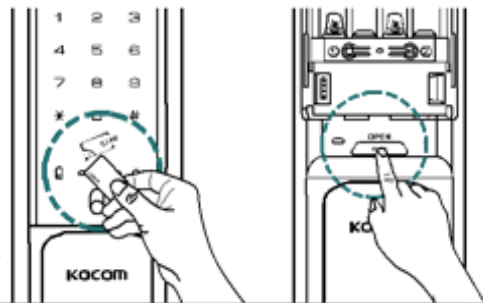
Abrir la puerta usando tarjeta RF desde exterior
Presente la tarjeta RF ya registrada en el lector de la cerradura



Abrir la puerta usando contraseña desde exterior
Presente la mano en el teclado para encender el teclado.
Ponga el código y presione "*" o "#" para abrir la puerta.

En caso de usar una contraseña invalida 3 veces,
La cerradura sonara por 30seg y teclado estará desactivado

10. Función código aleatorio



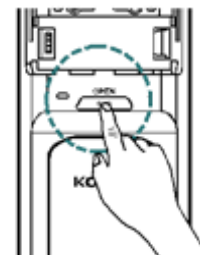
- ❶ Presione "OPEN / CLOSE"
Por 5seg
 - ❷ Presione número 2
- Sonido largo:
Activado
- Sonido cortó:
Deactivado

11. Cierre seguro



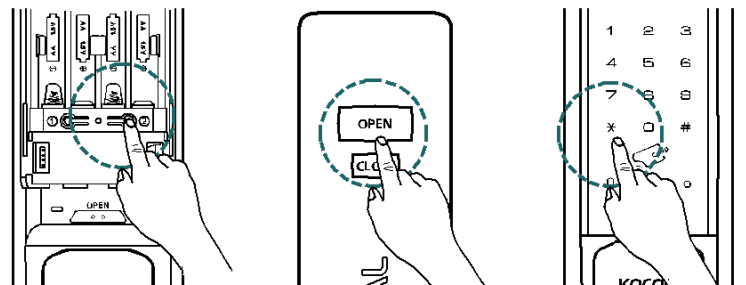
Cierre seguro desde exterior
Presione botón "Start" y "#"
Por 5seg.
Va a escuchar un sonido de confirmación.
Esto es para usar la cerradura doble y deshabilitar el botón intero.

► Cuando el cierre seguro se activa desde exterior se puede desactivar jalando o empujando la manija desde el interior, o usando tarjeta o contraseña desde el exterior.



Cierre seguro desde interior
Presione "OPEN / CLOSE" por 5seg con esto se activa el cierre seguro desde interior.
Cuando el cierre seguro se activa desde interior, el teclado exterior queda inhabilitado y no se puede abrir la puerta desde afuera.

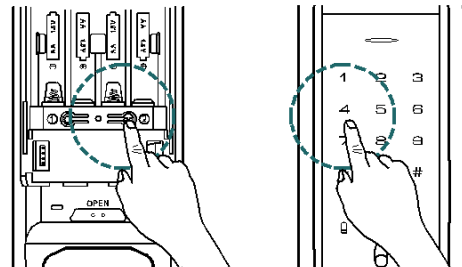
12. Registro de control remoto (opcional)



- 1 Presione el botón derecho
Con la puerta abierta
- 2 Presione botón "OPEN"
y "CLOSE" al mismo
tiempo
- 3 Use "*" en el
Teclado, sonará
Una confirmación

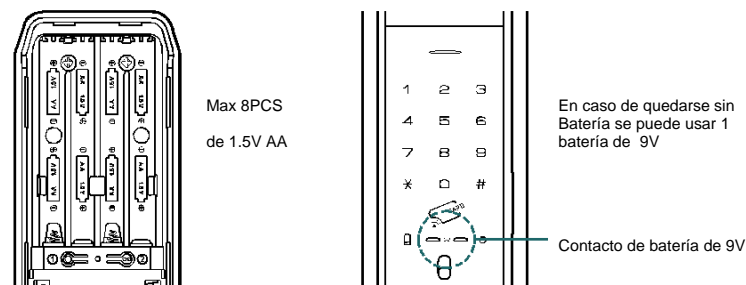
※ Max 3 controles remotos
※ Se borran en orden que fueron
agregados

13. Borrado de controles remoto



- 1 Presione botón derecho
Con la puerta abierta
- 2 Presione el número 4 por 3seg
para borrar los controles

15. Reemplazo de baterías



1. Tiempo de vida de batería : 4 a 8 meses usando 10 veces al día
2. Alarma de batería baja : Luz roja parpadeando con melodía.
Abrir la tapa de baterías y reemplazar todas las baterías, asegurarse que la polaridad sea la correcta.

- **1. To change into Auto / Manual**
Press the OPEN / CLOSE button for 5 seconds or longer + the number "1"
- **2. To change random security coding (Option)**
Press the OPEN / CLOSE button for 5 seconds or longer + the number "2"
- **3. To register passwords for 5 users (Option)**
Press the OPEN / CLOSE button for 5 seconds or longer + the number "3"
- **4. To delete remote control adaptor registration**
Press the OPEN / CLOSE button for 5 seconds or longer + the number "4"
- **5. To change into Card Auto / Manual (Option)**
Press the OPEN / CLOSE button for 5 seconds or longer + the number "5"
- **6. To operate an OPEN / CLOSE button (Option)**
Press the OPEN / CLOSE button for 5 seconds or longer + the number "6"
- **7. To setup double check**
Press the OPEN / CLOSE button for 5 seconds or longer + the number "7"
- **8. To set the time for Auto Lock**
Press the OPEN / CLOSE button for 5 seconds or longer + the number "8" + the number "3"(changed into 3 seconds)
- **9. To change a sound into Treble (low) / Bass (high)**
Press the OPEN / CLOSE button for 5 seconds or longer + the number "9"
- **10. To change a sound into Buzzer / Silence**
Press the OPEN / CLOSE button for 5 seconds or longer + the number "0"
- **11. Card deletion function**
If you press the card registration button and the button "3" for 3sec the card will be deleted
- **12. Mischief Prevention Function**
Not allowed to access the system in the event of mischief 3 times or more
- **13. Battery Replacement Indication**
In the event of lack of batteries (less than 4.3V), Korean children song ("School Bell") melody comes out
- **14. Fire Detection Sensor**
If the system detects the temperature 65°C ± 10°C degrees Celsius in the event of a fire, the door will open automatically

Product Features



Number and card key (optional) you can use

You can use your password and card key conveniently and freely make settings and changes



The open / Close functions of card and one-touch

All motions became convenient through simple one-touch



The function of automatic re-Locking

The automatic locking in case of closing a door



Self-diagnostic function

The door lock diagnoses the troubles of the system by itself, making you know the troubles of the function and the time to exchange batteries through alarm sound



It's available for 5 persons to use the password

Five persons can use ID differently each other



Automatic locking and time setting available

Free time setting available



The function of outward double-Locking device

In case of long-time outing, the motion of inside button is set to stop so that the robbery through milk slot can be prevented



Remote controller, home network registration available (Optional)

Available opening doors with remote controller in door



No. of cards you can register

You can register up to 50 cards



Manner function

Through the control of button and melody occurring from the product's motion, it's possible to prevent the neighbors from the noise at midnight



Function of fire sensor

In case of fire, a status of 65°C ± 10°C makes the door opened automatically So, you can escape safety



Imaginary number function

The function of making other's passwords unknown



Button lighting device distinguishable in darkness

When the device is worked, the lamp is lighted, so it's available to use even in darkness

Warranty Service for Product Defects

Damage types		Compensation items	
		Within warranty period	After warranty period
State of Normal Use	In case the troubles occur within 12 months after installation	Repair for free	Repair for Cost
	In case the same troubles occur two times	Repair for free	Repair for Cost
	In case the same troubles occur three times	Product replacement	Repair for Cost
	In case there is no any parts for repair	Product replacement	Product replacement (Limited to flat-rate depreciation)
Intention or Fault of Consumer	In case of an official trip because of consumer's mistake including the fault of exchanging batteries and the immaturity of inputting	Repair for Cost	Repair for Cost
	To exchange consumption goods including batteries	Repair for Cost	Repair for Cost
	Failures or damages due to other purposes than the original purpose of the product	Repair for Cost	Repair for Cost
	Failures or damages of purpose	Repair for Cost	Repair for Cost
	Failures or damages because entering passwords has been omitted or passwords have been forgotten	Repair for Cost	Repair for Cost
	Product damaged because of not carrying an emergency manual key	Repair for Cost	Repair for Cost
	Failures or damages due to a fire or natural disasters	Repair for Cost	Repair for Cost
Malfunctions due to condensation and moisture and improper operations due to poor installation	Repair for Cost	Repair for Cost	

Warranty Card(for Company)

Thank you very much for purchasing
KOCOM's digital door lock.

The quality assurance period is counted from the date of purchase.
Therefore be sure to have the date specified for sufficient service.

Consumer Name	
Telephone	
Model Name	
Serial Number	
Term of Guarantee	
Address	
Installation Agency	
Telephone	
Address	

- This product is produced by the thorough quality management.
- In case any troubles occur in the state of normal use within the warranty period, you can receive A/S for free.
- You are required to fill up the address, name and telephone number on the warranty card in time of buying the product and to keep the card well, and if otherwise, you need to pay for repair.

※Welcome your feedback

KOCOM

- Distributor : KOCOM Co., Ltd. • Manufacturer : Hione Plus Co., Ltd.
- Address : Arayuk-ro 22, Gochon-eup, Gimpo-si, Gyeonggi-do, Korea (Jeonho-ri 721, Gochon-eup)
- Models : KDL-7100SK, KDL-3600SK, KDL-3650SK, KDL-2600K, KDL-3700SK, KDL-3750S, KDL-2700K
- Manufacture country : Made in Korea • Website : www.kocom.co.kr



KDL-7100SK

Opening method : 3-Way
Password + Card + Key



KDL-3600Series

Opening method : 3-Way
Password + Card + Key



KDL-2600K

Opening method : 3-Way
Password + Card + Key



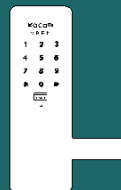
KDL-3700Series

Opening method : 3-Way
Password + Card + Key



KDL-3750S

Opening method : 2-Way
Password + Card



KDL-2700K

Opening method : 3-Way
Password + Card + Key

- You are kindly recommended to install the anticrime devices for the better and stronger security
- It's prohibited to dismantle, assemble and process the door lock with other purposes than installation and construction without a prior written approval from this Company
- It's possible to change the products and their manuals without prior notice in order to upgrade their performance

Made in KOREA



CAUTIONS

- To receive our full warranty services, please make an entry of all the items in a quality assurance
- If you do not make the entry, you must pay even during our warranty period
- In the event of malfunctions due to condensation and moisture, you must pay for warranty services
- ✖ **For problems due to condensation or with installation, you must pay for the services**
- ✖ **In the event you have forgotten passwords, or have lost a card / a manual key, you must pay for the services**
- **Company : KOCOM. Co., LTD.**