



**SILENT  
KNIGHT**

by Honeywell

# IFP-RPT

(Repeater Module)

## Installation Instructions

P/N 9001-0061:A

10/22/08

ECN: 08-563

### IFP-RPT Installation Instructions

The Repeater Module (IFP-RPT) provides the remote interface between the IFP-2000 and the Broadband Network. The unit is available for use with unshielded twisted-pair wire, fiber-optic cable (IFP-RPT-FO), or unshielded twisted-pair only (IFP-RPT-UTP).

Figure 1 illustrates the IFP-RPT Repeater Module.

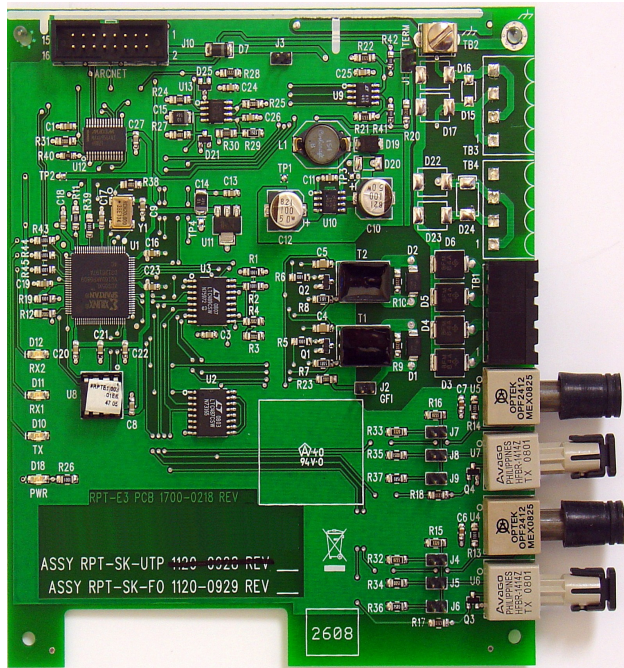


Figure 1 IFP-RPT (Repeater Module)

### Specifications

Operating Voltage: 24 VDC

Operating Current: 0.013 amp

Operating Temperature: 32° to 120° F (0° to 49° C)

Relative Humidity: 0 to 93%, non-condensing at 90° F (32° C)

Supervised

Power-limited

Figure 2 illustrates the IFP-RPT Repeater Module jumpers, terminals and connectors.

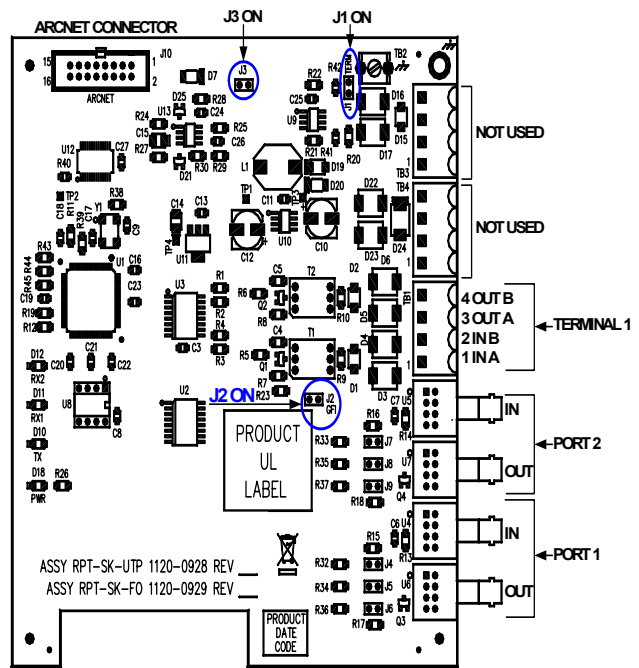


Figure 2 IFP-RPT (Repeater Sub-Assembly)

## Installing the IFP-RPT

1. Installations are to be indoors only, in dry locations, protected from rain, water, and rapid changes in temperature that could cause condensation. Equipment must be securely mounted on rigid, permanent walls.
2. Remove the IFP-RPT Repeater Module from its static-shield bag, observing proper static protection measures.
3. Visually inspect the unit for damage.
4. Use the hardware kit provided with the unit.
5. To connect the IFP-RPT Repeater Module to the IFP-2000, refer to the *IFP-2000 Installation/Operating Manual P/N 151430*.

## IFP-RPT Network Wiring Diagram

Figure 3 illustrates the IFP-RPT network wiring.

**Note:** For additional information on the IFP-RPT Repeater terminals and jumper settings, refer to Table 1 on page 3 and Table 2 on page 3. For information on the IFP-RPT transmitter output power jumper settings, refer to Table 3 on page 3.

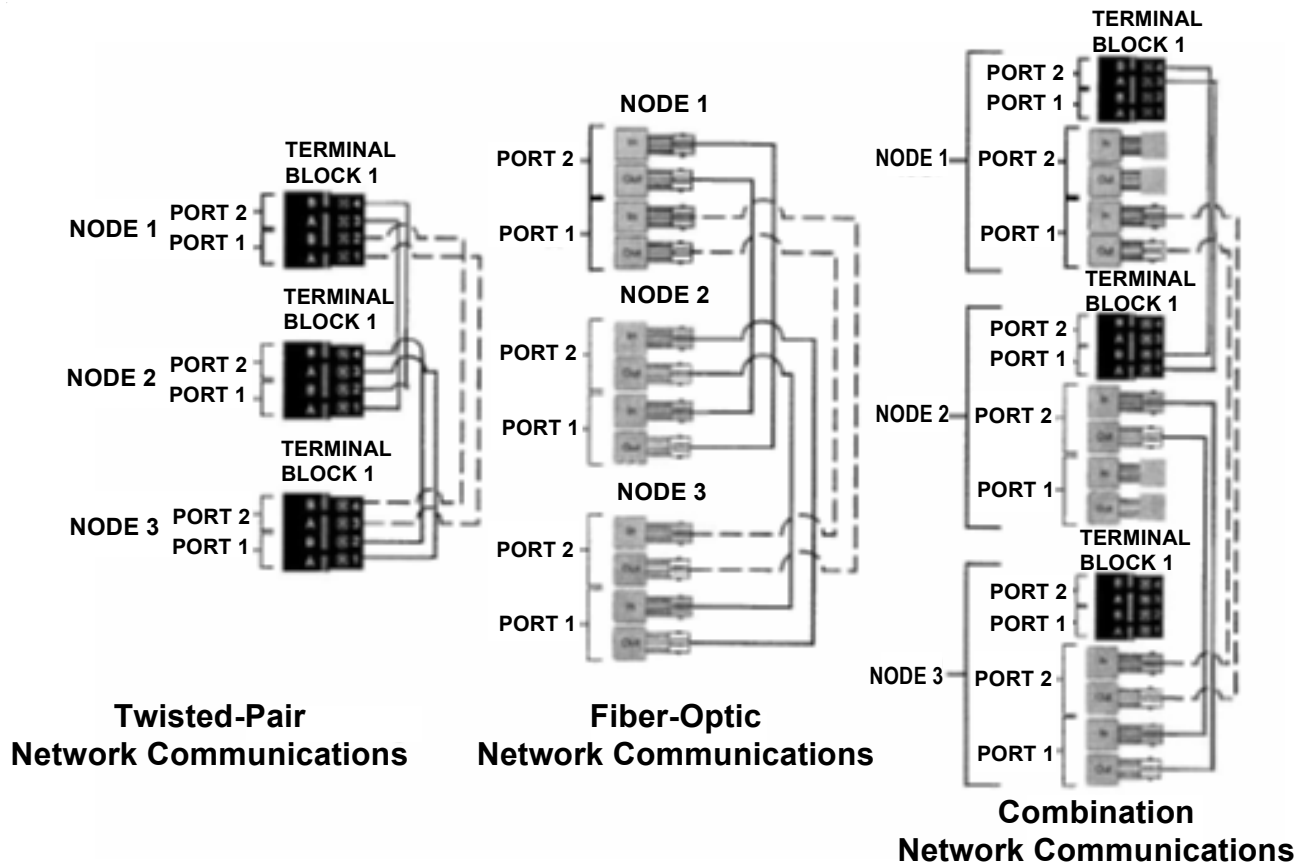


Figure 3 IFP-RPT Network Wiring

## IFP-RPT Wiring

Table 1 lists the wiring connections for the IFP-RPT Repeater terminals. Table 2 lists the Jumper Settings. Table 3 provides the Transmitter Output Power Jumper Settings for the fiber-optic connections.

**Table 1 Repeater Terminals**

Terminal Block/ Connector	Terminal No.	Description	Comments
Terminal 1 (TB1)	4	Port 2 Out B (Twisted-Pair Wire)	
	3	Port 2 Out A (Twisted-Pair Wire)	
	2	Port 1 In B (Twisted-Pair Wire)	
	1	Port 1 In A (Twisted-Pair Wire)	
Port 2	RX	In (Fiber-Optic Cable)	U5*
Port 2	TX	Out (Fiber-Optic Cable)	U7*
Port 1	RX	In (Fiber-Optic Cable)	U4*
Port 1	TX	Out (Fiber-Optic Cable)	U6*
J10	ARCNET	ARCNET Connection to Network Repeater Port on IFP-2000	

*Note: \*U4, U5, U6 and U7 are removed from the IFP-RPT-UTP.*

**Table 2 Jumper Settings**

Jumper Number	Designation
J1	On
J2	On
J3	On

*Note: For additional information on the IFP-RPT jumper settings, refer to the IFP-2000 Installation/Operating Manual, P/N:151430.*

**Table 3 Transmitter Output Power Jumper Settings**

Port 1			Port 2			Transmit Power
J4	J5	J6	J7	J8	J9	
OPEN	OPEN	OPEN	OPEN	OPEN	OPEN	12.5%
SHORT	OPEN	OPEN	SHORT	OPEN	OPEN	25.0%
OPEN	SHORT	OPEN	OPEN	SHORT	OPEN	37.5%
SHORT	SHORT	OPEN	SHORT	SHORT	OPEN	50.0%
OPEN	OPEN	SHORT	OPEN	OPEN	SHORT	67.5%
SHORT	OPEN	SHORT	SHORT	OPEN	SHORT	75.0%
OPEN	SHORT	SHORT	OPEN	SHORT	SHORT	87.5%
SHORT	SHORT	SHORT	SHORT	SHORT	SHORT	100.0%

## IFP-RPT Wiring (Continued)

Table 4 lists the LED indicators for the IFP-RPT sub-assembly.

**Table 4 LED Indicators**

LED	Status	Description
D12/	ON	Receiving Network Transmissions into ARCNET Port 2 or U5
D12	OFF or BLINKING	Not Receiving Network Transmissions into ARCNET Port 2 or U5
D11	ON	Receiving Network Transmissions into ARNET Port 1 or U4
D11	OFF or BLINKING	Not Receiving Transmissions into ARCNET Port 1 or U4
D10	ON	Transmitting to Network
D10	OFF	Not Transmitting to Network
D18	ON	Powered
D18	OFF	Not Powered



by Honeywell

7550 Meridian Circle, Suite 100  
Maple Grove, MN 55369-4927  
763-493-6455 or 800-328-0103  
Fax: 763-493-6475

[www.silentknight.com](http://www.silentknight.com)

© 2008 Honeywell International Inc.