

Electrical Specifications

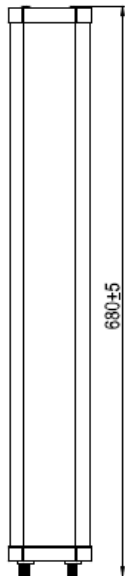
- Frequency Range 2.4 – 2.5 GHz
- Gain 14 dBi
- Polarization Dual Slant $\pm 45^\circ$
- Horizontal Beamwidth 70° (-3 dB)
- Vertical Beamwidth 12° (-3 dB)
- VSWR 2 (Max.)
- Front-to-back Ratio -25 dB (Max.)
- Isolation 20 dB (Min.)
- Impedance 50Ω
- Power Handling 10 W (cw)
- Lightning Protection DC Ground

Environmental and Mechanical Specifications

- Temperature -40 °C to +60 °C
- Wind Loading Up to 216 km/h (134 mph)
- Radome Color Gray
- Radome Material ABS, UV Resistant
- Weight 1.085 kg
- Dimensions 680 x 112 mm
- Connector 2 x N-male
- Pole Diameter $\varnothing 30$ to 70 mm
- Mechanical Downtilt $\pm 30^\circ$ (Max.)

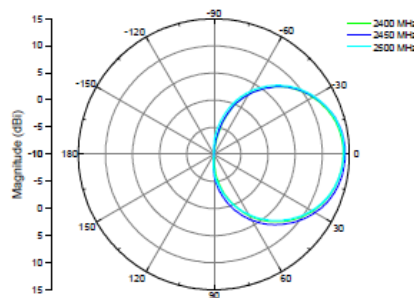


Drawing Diagram

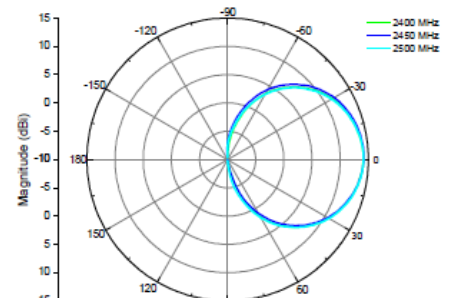


Antenna Patterns

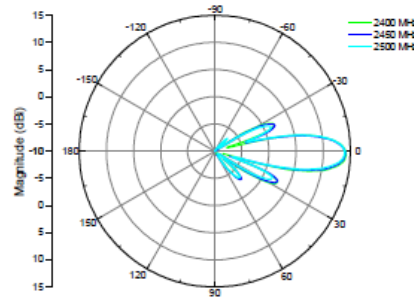
H-plane Co-polarization, Port 1



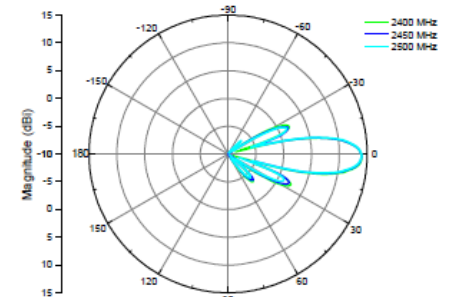
H-plane Co-polarization, Port 2



V-plane Co-polarization, Port 1



V-plane Co-polarization, Port 2



Product Ordering Information

- 2.4 GHz, 14 dBi X-pol Directional Antenna

Contact Us

- Email: sales@altaitechnologies.com

AN-PB-140303

Although Altai has attempted to provide accurate information in these materials, Altai assumes no legal liability for the accuracy and completeness of the information. All specifications are subject to change without notice.