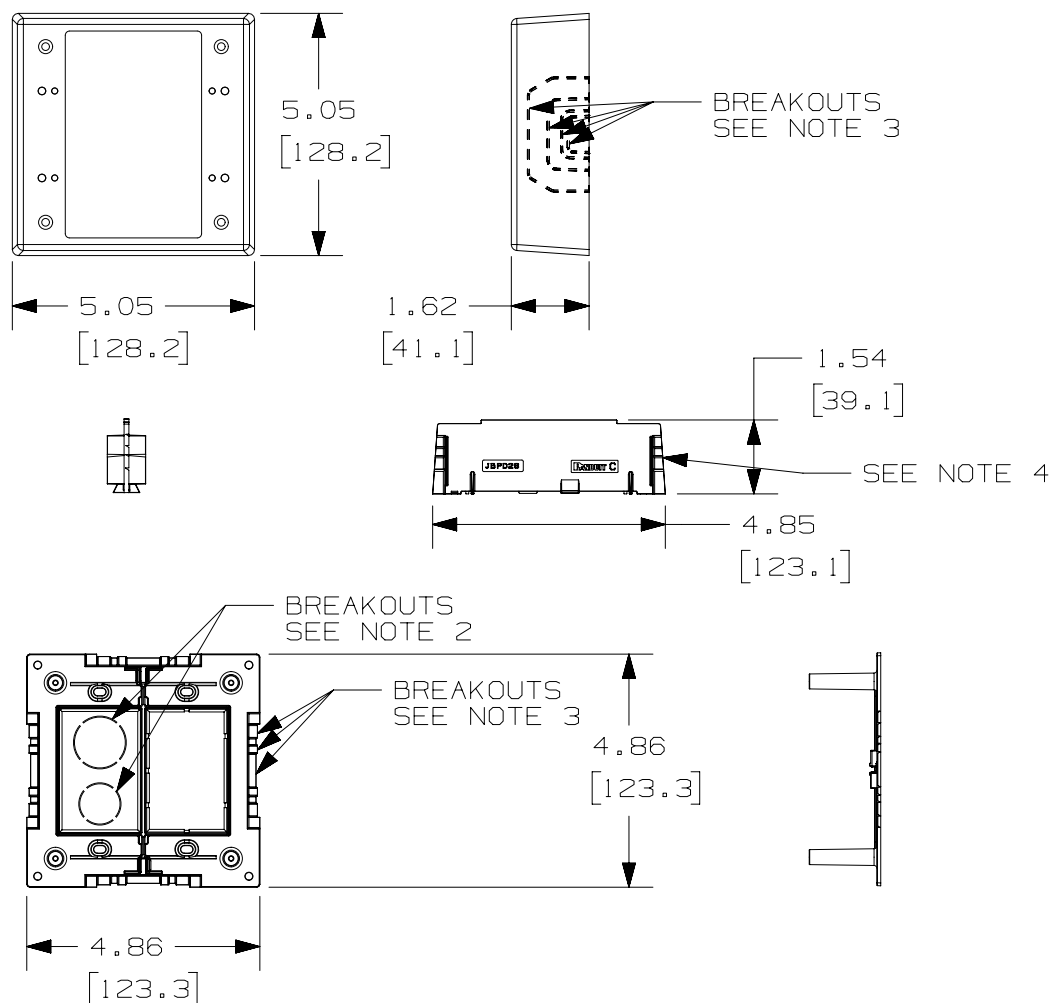


2

1

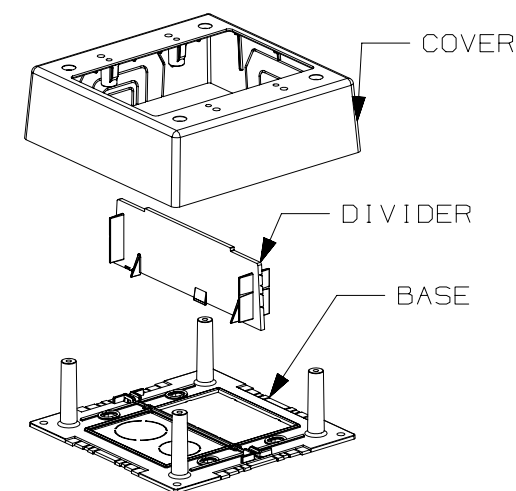
THIS COPY IS PROVIDED ON A RESTRICTED BASIS AND IS NOT TO BE USED IN ANY WAY DETRIMENTAL TO THE INTERESTS OF PANDUIT CORP.



PANDUIT P/N	WEIGHT	VOLUME cu. in./cc
JBP2S	0.27 lb/ PCS (121.0 g/ PCS)	32.1 (526)

#### NOTES:

1. SEE [WWW.PANDUIT.COM](http://WWW.PANDUIT.COM) FOR ADDITIONAL PART SUFFIXES TO INDICATE COLOR AND OR PACKAGE QUANTITY.
2. CONCENTRIC BREAKOUTS TO ACCOMMODATE CONDUIT SIZES OF 1/2", AND 3/4" DIAMETERS.
3. BREAKOUTS ARE PROVIDED ON ALL FOUR SIDES OF COVER FOR T45, LDS, LDPH & LD RACEWAYS.
4. DIVIDER PROVIDES POWER AND DATA SEPARATION IMMEDIATELY FROM RACEWAY.
5. DIMENSIONS IN PARENTHESES ARE IN METRIC.



PART NUMBER		SEE TABLE	
TITLE		PAN-WAY 2 GANG SHALLOW JUNCTION BOX WITH DIVIDER WALL	
ITEM REVISION NAME		CUSTOMER DRAWING	
DATASET FILE NAME		D35677BE-DC_JBP2S/04A	
MATERIAL		BASE, COVER, DIVIDER = PVC	
DRAWN BY		DW	
DATE		10-28-97	
CHK		HIW	
SCALE		NONE	
DRAWING NUMBER		35677-05	
SHEET 1 OF 1		A	

04A	04-18-23	BJN	BSN	TAM	MADE UNITS LOWER CASE; NOTE 1: MADE <a href="http://WWW.PANDUIT.COM">WWW.PANDUIT.COM</a> DIVIDER: PVC WAS POLYSTYRENE	M09000TA
REV	DATE	BY	CHK	APR	DESCRIPTION	ECN

2

1