



ALTAI C1N SUPER WIFI CPE

QUICK SETUP GUIDE

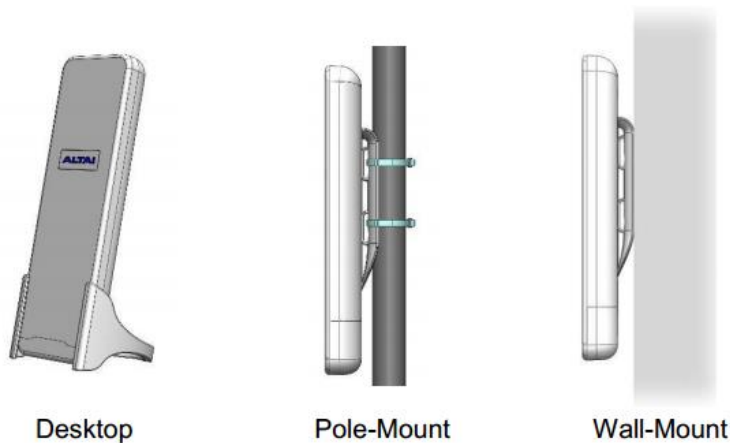
Version 1.1

Date: September, 2013

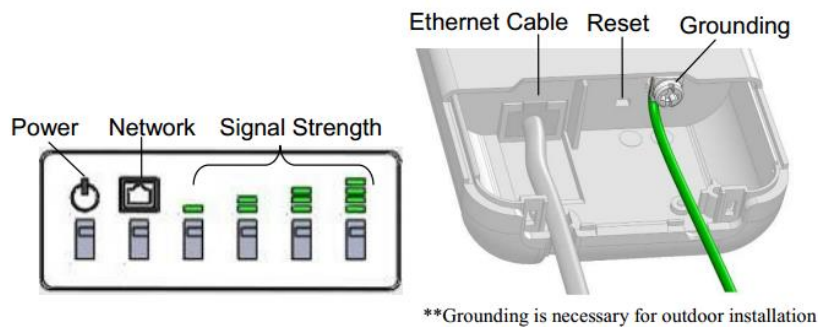
Packing List

1. C1n CPE Main Unit
2. Table Stand (Optional)
3. AC Adapter
4. DC Injector
5. 2pcs of wire clamp

Installation Options

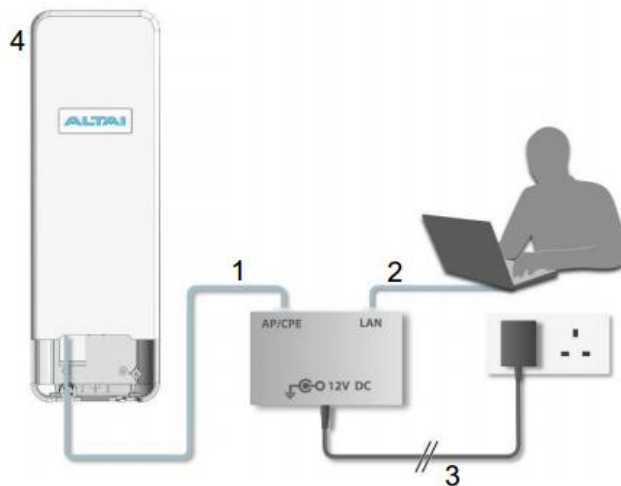


LED Indication



Cable Connection

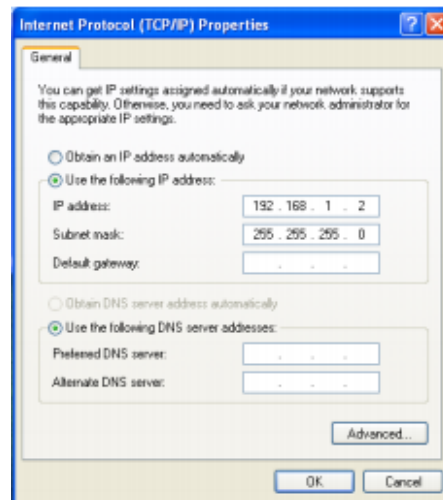
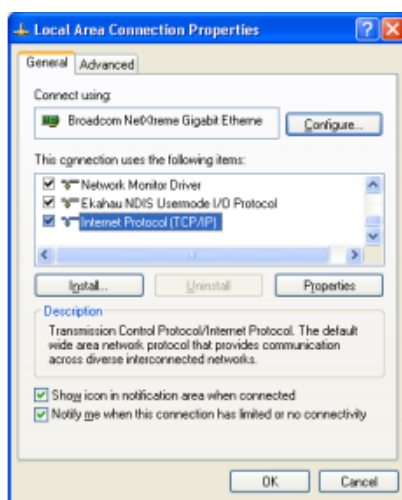
1. Connect C1n and DC injector with an Ethernet Cable;
2. Connect another network cable between DC injector "LAN" port and a computer Ethernet port;
3. Connect the AC power adapter to the DC injector and plug it into a power socket;
4. Make sure both the Power LED and the Network LED light green.



Configure TCP/IP of your computer

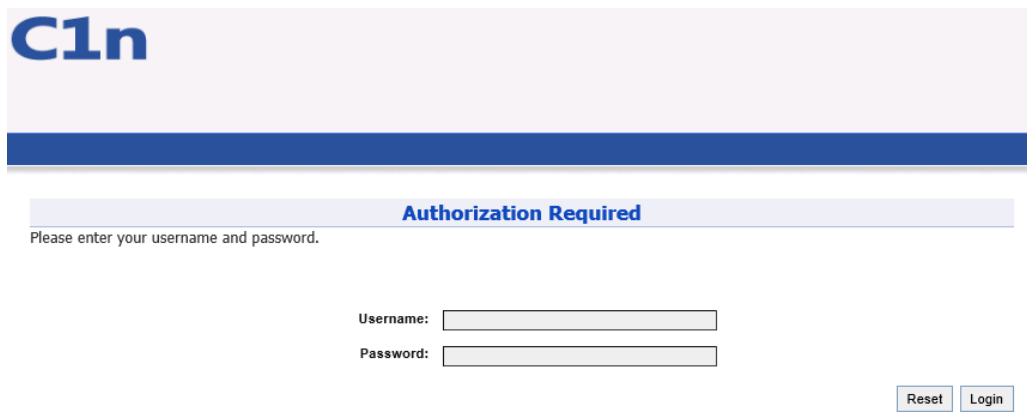
For **Windows XP** user,

1. Click **Start** > **Control Panel**, click Switch to Classic View and double click on Network Connections
2. Right click on the **Local Area Connection** and click **Properties**.
3. Double click **Internet Protocol (TCP/IP)**, Type in the following IP address and Subnet mask:
IP address: 192.168.1.2
Subnet mask: 255.255.255.0.
4. Click OK to close the **Internet Protocol (TCP/IP) Properties** and click **OK** again to close the Local Area Connection Properties



Connect to C1n Web Interface

1. Open a web browser and type the URL `http://192.168.1.222`
2. Login the C1n web interface with:
User name: admin
Password: admin
3. Click OK
4. Click Enter on the web page



C1n

Authorization Required

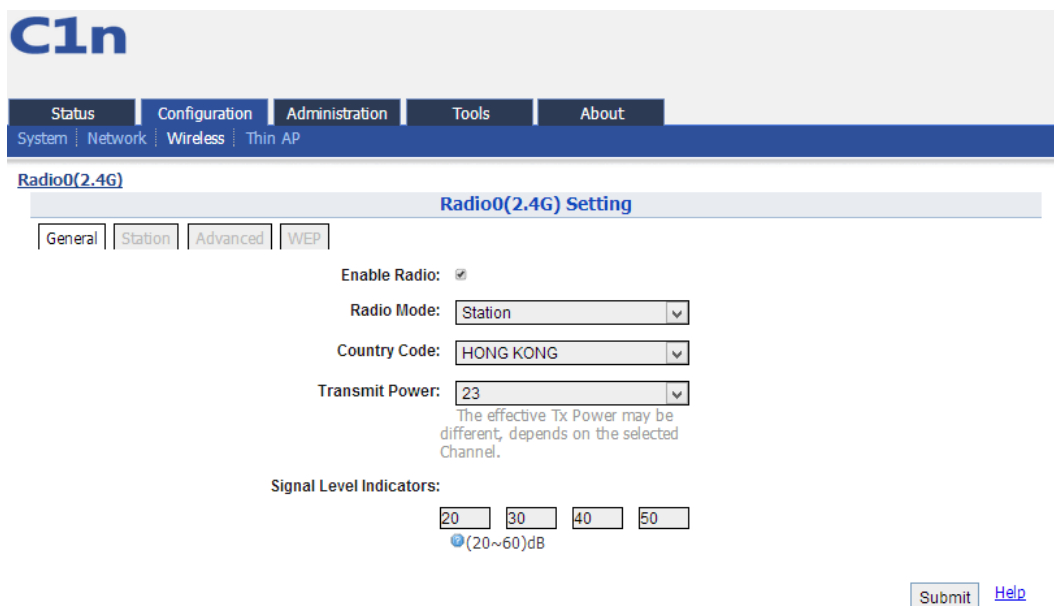
Please enter your username and password.

Username:

Password:

Configure C1n CPE Mode

1. Go to **2.4GHz Radio**
2. Select **Station** as Radio Operation Mode and Click **Submit**



C1n

Status | Configuration | Administration | Tools | About

System | Network | Wireless | Thin AP

Radio0(2.4G)

Radio0(2.4G) Setting

General | Station | Advanced | WEP

Enable Radio:

Radio Mode:

Country Code:

Transmit Power:

The effective Tx Power may be different, depends on the selected Channel.

Signal Level Indicators:

20 30 40 50

(20~60)dB

[Help](#)

3. Select **Station** and Click [More...](#)

C1n

Status | Configuration | Administration | Tools | About

System | Network | Wireless | Thin AP

Radio0(2.4G)

Radio0(2.4G) Setting

General | **Station** | Advanced | WEP

WLAN ID	Remote SSID	Auth Mode	Detail
0	Network 0	open	More...

Submit [Help](#)

4. Click **Scan** to scan available **SSID** in WLAN General;
5. Select the desired **SSID** and click Select
6. Click **Submit**

C1n

Status | Configuration | Administration | Tools | About

System | Network | Wireless | Thin AP

Radio0(2.4G)

Radio0(2.4G):WLAN0 Setting

WLAN General | **WLAN Security**

Enable WLAN:

WLAN Mode: Station

Remote SSID: Network 0
[Scan](#)

Preferred AP0 Mac:

Preferred AP1 Mac:

Preferred AP2 Mac:

Enable Roaming:

Station Association Requirement

	Value	Range
Minimum signal for association	0	(0-100dB, 0:Disable)
Disconnect Signal Threshold	0	(0-100dB)
Disconnect Packet Threshold	10	(1-256)

[Back to Station List](#) [Submit](#) [Help](#)

7. Click **WLAN Security**
8. Select **Authentication Mode** and **Cipher Mode** provided by ISP
9. Click **Submit** and click **Save&Apply**

C1n

Status | Configuration | Administration | Tools | About

System | Network | Wireless | Thin AP

Radio0(2.4G)

Radio0(2.4G):WLAN0 Setting

WLAN General | WLAN Security

Authentication Mode: Open

Cipher Mode: Disabled

Back to Station List | Submit | Help

Configure C1n AP Mode

1. Go to **2.4GHz Radio**
2. Select **AP** as Radio Operation Mode and click **Submit**

C1n

Status | Configuration | Administration | Tools | About

System | Network | Wireless | Thin AP

Radio0(2.4G)

Radio0(2.4G) Setting

General | WLAN | Advanced | WEP

Enable Radio:

Radio Mode: AP

Country Code: HONG KONG

Wireless Mode: 2.4GHz 130Mbps(802.11ng)

Radio Frequency: 2412MHz(Channel 1)

Transmit Power: 23

Maximum Clients: 64 (1-64)

Enable Inter-WLAN User Isolation:

Submit | Help

3. Click **WLAN**
4. Type in **SSID** to customize wireless network name.
5. Click **Submit**

C1n

Status | Configuration | Administration | Tools | About

System | Network | Wireless | Thin AP

Radio0(2.4G)

Radio0(2.4G) Setting

General | **WLAN** | Advanced | WEP

WLAN Configuration

Enable WLAN	SSID	Max Clients	Isolation	Auth Mode	Access Traffic Right	WLAN Uplink/Downlink Control		Station Uplink/Downlink Control		Detail
<input checked="" type="checkbox"/> 0	Superwifi Network <input type="checkbox"/> Hide SSID	64	<input checked="" type="checkbox"/>	open	Full Access	0	0	0	0	More...
<input type="checkbox"/> 1	Superwifi Network <input type="checkbox"/> Hide SSID	64	<input checked="" type="checkbox"/>	open	Full Access	0	0	0	0	More...
<input type="checkbox"/> 2	Superwifi Network <input type="checkbox"/> Hide SSID	64	<input checked="" type="checkbox"/>	open	Full Access	0	0	0	0	More...
<input type="checkbox"/> 3	Superwifi Network <input type="checkbox"/> Hide SSID	64	<input checked="" type="checkbox"/>	open	Full Access	0	0	0	0	More...
<input type="checkbox"/> 4	Superwifi Network <input type="checkbox"/> Hide SSID	64	<input checked="" type="checkbox"/>	open	Full Access	0	0	0	0	More...
<input type="checkbox"/> 5	Superwifi Network <input type="checkbox"/> Hide SSID	64	<input checked="" type="checkbox"/>	open	Full Access	0	0	0	0	More...
<input type="checkbox"/> 6	Superwifi Network <input type="checkbox"/> Hide SSID	64	<input checked="" type="checkbox"/>	open	Full Access	0	0	0	0	More...
<input type="checkbox"/> 7	Superwifi Network <input type="checkbox"/> Hide SSID	64	<input checked="" type="checkbox"/>	open	Full Access	0	0	0	0	More...

[Help](#)

- Click the [More...](#) and Click **WLAN Security**
- Select **WPA-PSK/WPA2-PSK** for **Authentication Mode** and select **AES** for **Cipher Mode**
- Type in a password with 8~63 characters or numbers in **PassPhrase** and click **Submit** and **Save&Apply**.

C1n

Status | Configuration | Administration | Tools | About

System | Network | Wireless | Thin AP

Radio0(2.4G)

Radio0(2.4G):WLAN0 Setting

WLAN General | **WLAN Security** | Rogue Station List | Bandwidth Control

Authentication Mode: Open

Cipher Mode: Disabled

Access Control List: Enabled - Default Allow

ACL Input Method: Manual Input File

Denied MAC Address:

[Help](#)

Verify C1n AP/CPE Connection Status

For AP Mode

1. Using a laptop to scan the SSID you set for C1n AP and try to connect to it.
2. Go to **Status > Interface > Association List** to check the client information.

For CPE Mode

1. Go to **Status > Interface > AP Info** to check associated AP information.
2. To reset TCP/IP Settings
Click **Start > Control Panel** and double click on **Network Connections**
3. Right click on the **Local Area Connection** and click **Properties**.
4. Double click **Internet Protocol (TCP/IP)**
5. Select **Obtain an IP address automatically** Click **OK** to close the **Internet Protocol (TCP/IP) Properties** and click **OK** again to close the **Local Area Connection Properties**

