

# AW-GTS-287A

20xGE SFP + 4xCombo GE +  
4x10G SFP+ L2 Plus Managed Switch



## 10G Fiber L2 Plus Managed Switch · Managing IP Surveillance

VIVOTEK's AW-GTS-287A L2 Plus Managed Switch is a next-generation Fiber Switch offering a full suite of L2 Plus features and additional 1G/10G SFP+ uplink connections. The AW-GTS-287A L2 Plus includes advanced L3 features such as Static Route that delivers a better cost-performance ratio and a lower total cost of ownership in both Enterprise networks and backbone via fiber or copper connections.

With high Gigabit port densities and Gigabit SFP, 1G/10G SFP+ support, the GTS-287A switch can act as either a departmental access layer or as an aggregation switch to form a multilevel network. Service providers can take advantage of the high SFP density to structure the aggregation of Fiber to the Building (FTTB) networks that can be extended to subscribers' sites.

The AW-GTS-287A can be programmed for a number of advanced switch management functions, such as dynamic port link aggregation, Q-in-Q VLAN, Multiple Spanning Tree Protocol (MSTP), Layer 2/4 QoS, bandwidth control, IGMP/MLD snooping, GARP VLAN Registration Protocol (GVRP) and sFlow. Through link-aggregation of supporting ports, the AW-GTS-287A allows the operation of a high-speed trunk to combine with multiple ports. It enables a maximum of 14 trunk groups, with up to 16 ports in each group, and also supports connection fail-over.

The AW-GTS-287A is also specially equipped with one 100~240V AC power supply unit and one 24~72V DC power supply unit to provide enhanced reliability and enable scalable redundant power supply installation. The continuous power system is designed to fulfill the specific demands of high tech facilities requiring the highest power integrity and stability.

The AW-GTS-287A also features Graphic View, such as Topology/Map view for controlling and understanding network structure and device situation, and Google Map integration to view system situation status for outdoor applications.

## Features

- 20xGE SFP + 4xCombo GE + 4x1G/10G SFP+ L2 Plus Managed Switch
- L2 Plus Managed Switch Provides Easier Manageability, Robust Security and QoS
- IPv4/IPv6 L3 Static Route and DHCP Server
- AC/DC Dual Power Supply for Redundant Design

## Surveillance Feature

- Auto Discovery and Classification of Network Devices
- Batch Camera Configuration-File Import & Export
- Batch Camera Network/Login Configuration
- Auto Generated Surveillance Topology View
- Easy Tag VLAN Configuration in Topology View
- Smart Device-Management in Topology View
- Display IP Camera Live Stream in Topology View, Floor View and Google Map View

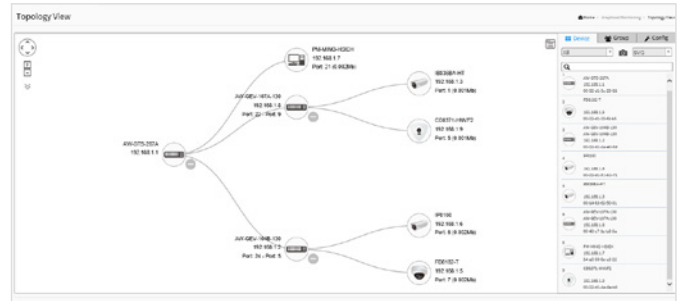
### Auto Discovery

AW-GEV L2+ Series can automatically discover any VIVOTEK's devices such as network cameras, video servers, CMS and NVR with a simple click of mouse.

Remove	Status	Device Type	Model Name	Device Name	MAC	IP Address
<input type="checkbox"/>	Online	IP Cam	VIVOTEK F08206	Mega-Pixel Network Camera	00-02-01-25-24-62	192.168.40.113
<input type="checkbox"/>	Online	IP Cam	VIVOTEK F08204	Mega-Pixel Network Camera	00-02-01-25-33-E7	192.168.40.126
<input type="checkbox"/>	Online	IP Cam	VIVOTEK F0812P	Mega-Pixel Network Camera	00-02-01-25-42-1A	192.168.40.138
<input type="checkbox"/>	Online	IP Cam	VIVOTEK F0823SH	Mega-Pixel Network Camera	00-02-01-25-44-15	192.168.40.89
<input type="checkbox"/>	Online	IP Cam	VIVOTEK F0812	Mega-Pixel Network Camera	00-02-01-25-40-71	192.168.40.70
<input type="checkbox"/>	Online	IP Cam	VIVOTEK F0813	Mega-Pixel Network Camera	00-02-01-25-30-84	192.168.40.107
<input type="checkbox"/>	Online	IP Cam	VIVOTEK F0823TH	F0823TH-C	00-02-01-25-8A-95	192.168.40.154
<input type="checkbox"/>	Online	IP Cam	VIVOTEK F0816Z	Mega-Pixel Network Camera	00-02-01-25-63-66	192.168.40.133
<input type="checkbox"/>	Online	IP Cam	VIVOTEK F0813H	Mega-Pixel Network Camera	00-02-01-24-67-45	192.168.40.24
<input type="checkbox"/>	Online	IP Cam	VIVOTEK F0823H	Mega-Pixel Network Camera	00-02-01-26-A3-90	192.168.40.107

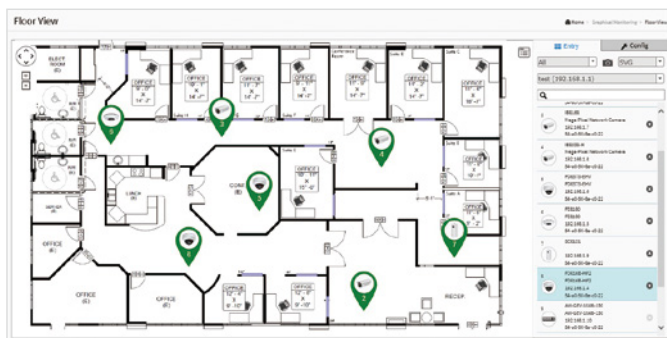
### Topology View

Auto-generated Topology View allows administrators to quickly view and export a complete network topology in SVG/PNG/PDF format for easier inspection and planning.



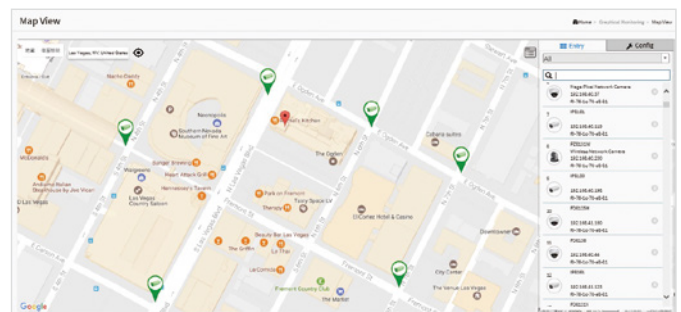
### Floor View

Upload custom floor images. Floor View allows for quick location of deployed surveillance devices and for export of this view in SVG/PNG/PDF format for easier inspection and planning.



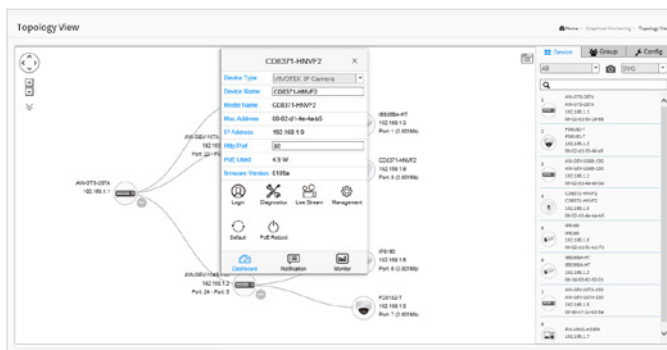
### Google Map

Locate surveillance devices on Google map to simplify multi-site management of any large scale deployments.



### Device Management

Easy Network Configuration, Open Camera Web UI, Diagnose Camera Connection and Cable Status, Display Camera Live Stream, Change Camera Network Setting, Restore Default, PoE consumption, PoE on/off control.



### Device Status

Device Status page to show the real-time verification result of each connection between switch port and device.

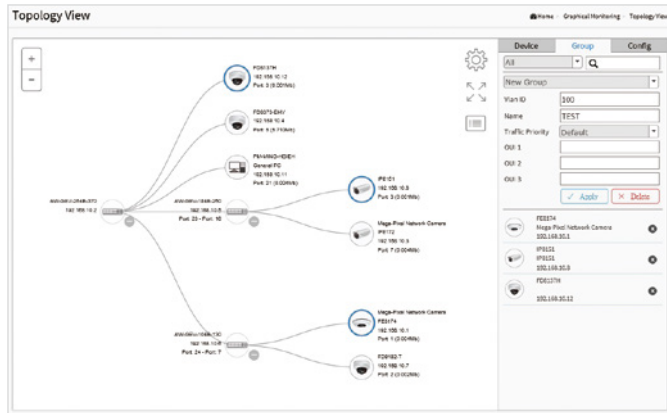
Select	Status	Model Name	Device Name	MAC	IP Address	Version
<input type="checkbox"/>	Online	FB0168	Mega-Pixel Network Camera	00-02-D1-2D-45-0F	192.168.1.7	0190e

192.168.1.17	00-40-c7-1c-a2-07	Connection: <span style="color: green;">●</span> OK
192.168.1.7	00-02-d1-2d-45-0f	Cable status: <span style="color: green;">●</span> OK

### VLAN Setting

Hierarchical topology view allows administrators to easily build a VLAN.

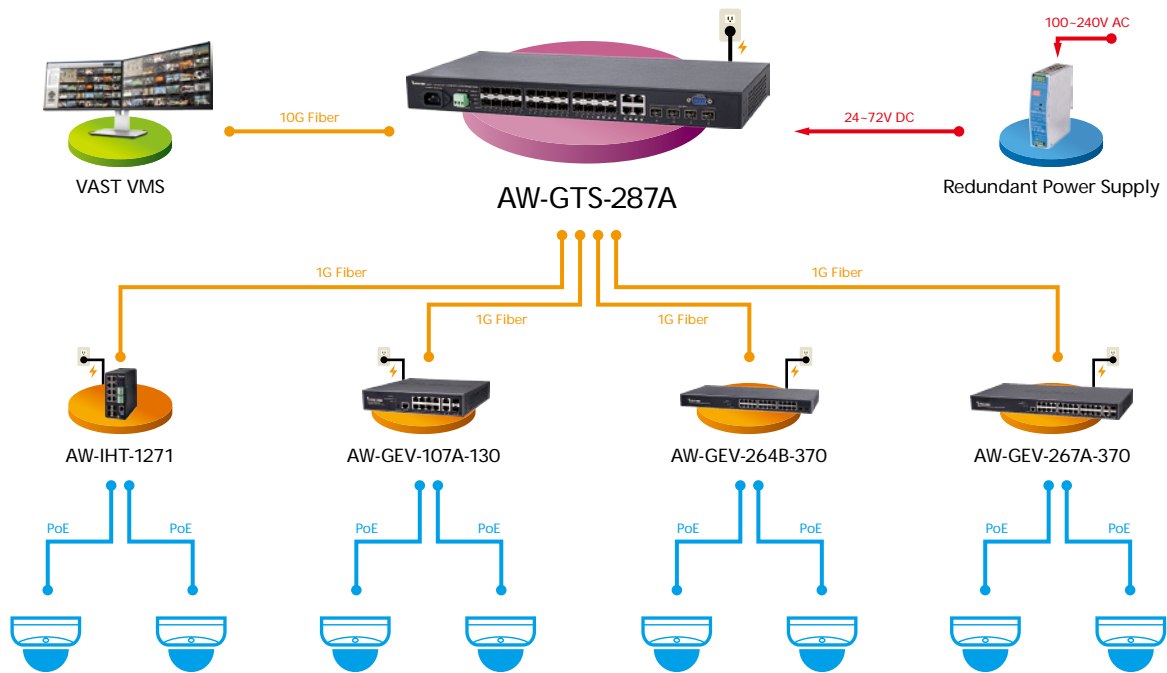


### Live Stream

Display live streaming camera window in Topology View, Floor View and Google Map View.



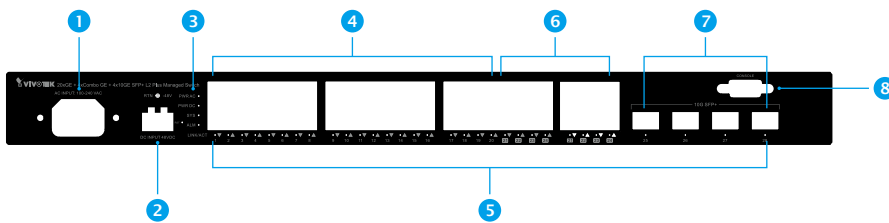
### Application



## Ordering Information

Model Name	Product Description
<b>L2 Plus Managed Switch</b>	
AW-GTS-287A	20xGE SFP + 4xGE Combo + 4x1G/10G SFP+
<b>VivoCam L2+ Managed PoE Switch</b>	
AW-GEV-107A-130	8xGE PoE + 2xGE Combo, 130W
AW-GEV-267A-370	24xGE PoE + 2xGE Combo, 370W
<b>VivoCam Web Smart Managed PoE Switch</b>	
AW-GEV-104B-130	8xGE PoE + 2xGE SFP, 130W
AW-GEV-184B-250	16xGE PoE + 2xGE SFP, 250W
AW-GEV-264B-370	24xGE PoE + 2xGE SFP, 370W
<b>Industrial VivoCam L2+ Managed PoE Switch</b>	
AW-IHT-1271	8xGE PoE + 4xGE SFP, 240W
<b>IP Surveillance Device</b>	
Network Camera	All VIVOTEK Network Cameras
NVR	All VIVOTEK NVRs
CMS	VAST 2

## AW-GTS-287A Front View



- 1 AC100 to 240V Power Input
- 2 DC Power Input
- 3 LED Indicators
- 4 Gigabit SFP Ports x20
- 5 LED Indicators
- 6 100M/1G SFP Combo Ports x4
- 7 1G/10G SFP+ Ports x4
- 8 Console Port

Managing IP Surveillance Functions			
<b>Management</b>			
Auto Search VIVOTEK Device			up to 1000 pcs
Surveillance Device Management List			V
DHCP Server Function			V
VIVOTEK Device Account/Password Setting			V
VIVOTEK Device Static IP Setting			V
VIVOTEK Device Grouping Setting for VLAN			V
VIVOTEK Device Name Edit			V
VIVOTEK Camera/Video Server Reboot/Restore Default			V
VIVOTEK Device Re-direct Link			V
VIVOTEK Device On/Off Line Status			V
<b>E-Map View</b>			
Topology View			V
Floor View			V
Google Map View			V
<b>Maintenance</b>			
VIVOTEK Camera/Video Server Configuration File Export/Import			V
VIVOTEK Cameras/Video Server Configuration File Management			V
Floor Image Management			V
Export Surveillance Management Device List			V
Security			V
Trouble Shooting			V
Traffic Monitoring			V
<b>Managed L2 Switch Functions</b>			
<b>Port Configuration</b>			
100M/1G SFP Port			20
GE RJ45/SFP Combo Port			4
100M/1G/10GbE SFP+ Port			4
Total Ports			28
Console Port			RS232
<b>HW Performance</b>			
Switching Bandwidth			128Gbps
MAC Address			32K
Jumbo Frames			10056 Bytes
<b>L2 Switching</b>			
Spanning Tree	IEEE802.1D (STP)		V
	IEEE802.1w (RSTP)		V
	IEEE802.1s (MSTP)		V
VLAN	802.1Q Tag-based VLAN		4096 VLAN IDs
	Port-based VLAN		V
	Voice VLAN		V
	Private VLAN		V
	Guest VLAN		V
	Q-in-Q (Double Tag) VLAN		V
	802.1v Protocol VLAN		V
	MAC-based VLAN		V
	IP Subnet-based VLAN		V
Port Grouping	IEEE 802.3ad with LACP (Dynamic)		up to 16 ports in a group , max up to 14 groups
	Static Trunk		up to 8 ports in a group , max up to 14 groups
IGMP Snooping (v1/v2/v3)			V
MLD Snooping			V
GARP VLAN Registration Protocol (GVRP)			V
Loop Detection			V
<b>L3 Features</b>			
IP Host Table			V
Static Route			V
Static ARP			V
0.34h917.8<0057>-17<004C>-21.4<0052>-21.1<005100030033>-20.5<0055>-24.2p0637u300			
		T03005(0.400	Tc49
			1
			Tf 0

## Technical Specifications

Model		AW-GTS-287A
Product Description		20xGE SFP + 4xCombo GE + 4x10G SFP+ L2 Plus Managed Switch
Hardware Queues		8
Class of Service	Port Based	V
	802.1p	V
	DSCP	V
	TCP/UDP (IPv4/IPv6)	V
Rate Limiting	Ingress	V
	Egress	V
Priority Queue Scheduling	WRR	V
	Strict Priority	V
IPv4 QoS (QCEs)		V
IPv6 QoS (QCEs)		V
<b>Security</b>		
Port Security (MAC-based)		V
IEEE802.1x		V
ACLs	L2/L3/L4	V
	IPv6 Support	V
IP Source Guard (IP-MAC-Port Binding)		V
Storm Control		V
RADIUS / TACACS+ Authentication		V
Layer 3 Isolation (Allow/disallow routing between IP Subnets)		V
HTTPs and SSL (Secured Web)		V
SSH v1.5/v2.0 (Secured Telnet Session)		V
BPDU Guard		V
STP Root Guard		V
DHCP Snooping		V
<b>Management</b>		
SNMP (v1, v2c, v3)		V
RMON (1,2,3 & 9 groups)		V
Software Upgrade		V
Configuration Export/Import		V
DHCP	Client	V
	Ready	V
	Option 66/67/82	V
Event/Error Log	Syslog	V
	SMTP (RFC821)	V
Management Access Filtering	SNMP	V
	Web	V
	Telnet	V
	SSH	V
Port Mirroring		V
LLDP (IEEE802.1AB)		V
LLDP-MED (IEEE802.1AB)		V
CDP Aware		V
sFlow		V
NTP/SNTP (RFC2030)		V
<b>IPv6 Support</b>		
Dual IPv6/IPv4 stack		V
IPv6 Web/SSL		V
IPv6 SNTP (Simple Network Time Protocol)		V
IPv6 Telnet Server/SSH		V
IPv6 Ping Trace Route		V
IPv6 TFTP		V
IPv6 RADIUS		V
IPv6 Syslog		V
IPv6 DNS Client		V
IPv6 Protocol-based VLANs		V
IPv6 SNMP		V
<b>Environmental Specifications</b>		
Operating Temperature		-20°C ~ 60°C (-4°F ~ 140°F)
Operating Humidity		10 ~ 90% RH
Storage Temperature		-40°C ~ 85°C (-40°F ~ 185°F)
Storage Humidity		10 ~ 90% RH
<b>Mechanical Specifications</b>		
Dimensions		44 (H) x 442 (W) x 211 (D) mm

## Technical Specifications

Model	AW-GTS-287A
Product Description	20xGE SFP + 4xCombo GE + 4x10G SFP+ L2 Plus Managed Switch
Weight	3.1 kg
<b>Power Source</b>	
AC/DC Dual input	100~240V AC / 24~72V DC
Power Consumption (Full load)	40W
<b>Certifications</b>	
Certifications	CE, FCC, LVD, VCCI
<b>Accessories</b>	
Included Accessories	Power Cord, QIG, CD Manual, Rack Mount Kit, Console cable

## Dimensions

