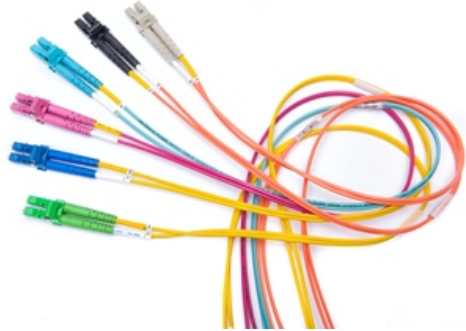


FTSLC2MMPS01 Cable Assemblies - FX FIELD-TERMINATION PIGTAIL



For more Information
please call

1-800-Belden1



General Description:

FX FIELD-TERMINATION PIGTAIL, OS2, LC SIMPLEX, JACKETED 2.0 MM, SINGLE-ENDED, 2M, YELLOW JACKET

Usage (Overall)

| | |
|------------------------|-----------------------------------------------------------------------------------------|
| Suitable Applications: | Data Centers, Main Equipment Rooms and Telecommunications Rooms |
| Related Parts: | FiberExpress Adapter Strips, FiberExpress Manager Modules and FiberExpress Ultra Frames |

Multi Conductor

Physical Characteristics

Overall Cabling

| | |
|--------------------------|-----------------------------------------|
| Overall Cabling Fillers: | Refer to cable Technical Specifications |
|--------------------------|-----------------------------------------|

Overall Diameter

| | |
|---------------------------|----------|
| Overall Nominal Diameter: | 1.981 mm |
|---------------------------|----------|

Physical Characteristics (Connectivity)

Fiber Type

| | |
|-------------|-----------|
| Fiber Type: | SM, (OS2) |
|-------------|-----------|

Materials

Materials:

| Description | Type | Material | Color |
|----------------------|--------------|------------------|--------|
| Connectors for end 1 | LC | Plastic | Blue |
| Boots for end 1 | | Rubber | Blue |
| Ferrules for end 1 | 1.25mm | Zirconia-Ceramic | |
| Jacket | 2.0 mm Round | OFN | Yellow |

Wiring Scheme

| | |
|----------------|-----------------|
| Wiring Scheme: | TIA/EIA 568-C.3 |
|----------------|-----------------|

Weight

| | |
|---------|----------|
| Weight: | 0.047 kg |
|---------|----------|

Packaging

| | |
|------------|------------------------|
| Packaging: | Individually packaged. |
|------------|------------------------|

Mechanical Characteristics (Connectivity)

| | |
|------------------------------|----------------|
| Storage Temperature Range: | -40°C To +75°C |
| Operating Temperature Range: | -40°C To +75°C |

Environmental/Mechanical Characteristics:

| Test (Method) | TIA 568-D.3 | Belden |
|---------------------------|-------------------------------------|-------------------------------------|
| Thermal Cycling (FOTP-3) | n/a | -40 to 75°C cycling for 7 days |
| Temperature Life (FOTP-4) | 60°C for 4 days | 85°C for 7 days |
| Humidity (FOTP-5) | 90-95% at 40°C for 4 days | 95% @ 75°C for 7 days |
| Durability (FOTP-21) | 500 cycles | 6 x 200 cycles (3 Elevations) |
| Cable Retention (FOTP-6) | 5.0 kg @ 0 deg. | 1.94 kg @90 deg. |
| Flex (FOTP-1) | 0.5 kg @ 90° to -90° for 100 cycles | 0.9 kg @ 90° to -90° for 100 cycles |

METRIC MEASUREMENT VERSION

FTSLC2MMPS01 Cable Assemblies - FX FIELD-TERMINATION PIGTAIL

| | | |
|-----------------|----------------------|----------------------|
| Twist (FOTP-36) | 1.5 kg for 10 cycles | 1.5 kg for 10 cycles |
|-----------------|----------------------|----------------------|

Overall Length Tolerances:

| Range | Tolerance | Range | Tolerance | Range | Tolerance |
|-------------------|-------------------|-------------------|-----------------|----------------------------|----------------------------|
| Sx & Dx Patchcord | Sx & Dx Patchcord | MPO Trunk | MPO Trunk | Multi-Fiber Cable Assembly | Multi-Fiber Cable Assembly |
| 0 to 2 meters | +0.2 / -0 meter | 0 to 2 meters | +0.2 / -0 meter | 0 to 2 meters | +0.2 / -0 meter |
| 2.1 to 5.0 meters | +0.3 / -0 meter | 2.1 to 5.0 meters | +0.3 / -0 meter | 2.1 to 5.0 meters | +0.3 / -0 meter |
| 5.1 to 40 meters | +0.4 / -0 meter | 5.1 to 20 meters | +0.4 / -0 meter | 5.1 to 20 meters | +0.4 / -0 meter |
| Over 40.1 meters | + 1.0% / -0% | Over 20.1 meters | + 1.0% / -0% | Over 20.1 meters | + 1.3 / -0 meter |

Applicable Specifications and Agency Compliance (Overall)

Applicable Standards & Environmental Programs

| | |
|---------------------------------------|----------------------------------|
| EU Directive 2002/95/EC (RoHS): | Yes |
| EU RoHS Compliance Date (mm/dd/yyyy): | 01/01/2006 |
| MIL Order #39 (China RoHS): | EUP 50 |
| Safety Listing: | ACA, Bi-national Standard Listed |

Suitability

| | |
|-----------------------|-----|
| Suitability - Indoor: | Yes |
|-----------------------|-----|

Transmission Characteristics (Connectivity)

Optical Connector Performance:

| Description | OM1 (62.5 μm) | OM2 (50 μm) | OM3 (50 μm) | OM4 (50 μm) | OS2 (Singlemode) UPC | OS2 (Singlemode) APC |
|----------------------------------------------------|---------------|-------------|-------------|-------------|----------------------|----------------------|
| Maximum IL (dB) SingleFiber Connector LC - SC - ST | 0.25 dB | 0.25 dB | 0.25 dB | 0.15 dB | 0.35 dB | 0.35 dB |
| Typical RL (dB) SingleFiber connector LC - SC - ST | -30 dB | -30 dB | -30 dB | -30 dB | -55 dB | -65 dB |
| Maximum IL (dB) MultiFiber Connector MPO | 0.5 dB | 0.5 dB | 0.35 dB | 0.2 dB | - | 0.75 dB |
| Typical RL (dB) MultiFiber Connector MPO | -30 dB | -30 dB | -30 dB | -30 dB | - | -60 dB |

Electrical Characteristics (Overall)

Notes (Overall)

Product Family

Put Ups and Colors:

| Item # | Putup | Ship Weight | Color | Notes | Item Desc |
|--------------|-------|-------------|-------|-------|------------------------------|
| FTSLC2MMPS01 | 1 EA | 0.039 KG | | | FX PIGTAIL OS2 LC_SX JKT_2.0 |

Revision Number: 0 Revision Date: 11-05-2014

© 2017 Belden, Inc.
All Rights Reserved.

Although Belden makes every reasonable effort to ensure their accuracy at the time of this publication, information and specifications described herein are subject to error or omission and to change without notice, and the listing of such information and specifications does not ensure product availability. Belden provides the information and specifications herein on an "AS IS" basis, with no representations or warranties, whether express, statutory or implied. In no event will Belden be liable for any damages (including consequential, indirect, incidental, special, punitive, or exemplary damages) whatsoever, even if Belden has been advised of the possibility of such damages, whether in an action under contract, negligence or any other theory, arising out of or in connection with the use, or inability to use, the information or specifications described herein. All sales of Belden products are subject to Belden's standard terms and conditions of sale. Belden believes this product to be in compliance with EU RoHS (Directive 2002/95/EC, 27-Jan-2003). Material manufactured prior to the compliance date may be in stock at Belden facilities and in our Distributor's inventory. The information provided in this Product Disclosure, and the identification of materials listed as reportable or restricted within the Product Disclosure, is correct to the best of Belden's knowledge, information, and belief at the date of its publication. The information provided in this Product Disclosure is designed only as a general guide for the safe handling, storage, and any other operation of the product itself or the one that it becomes a part of. This Product Disclosure is not to be considered a warranty or quality specification. Regulatory information is for guidance purposes only. Product users are responsible for determining the applicability of legislation and regulations based on their individual usage of the product.