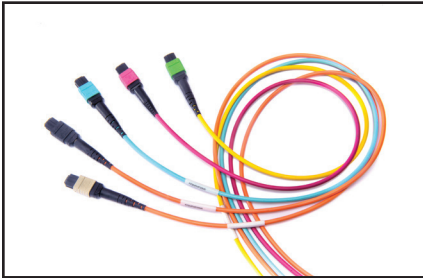
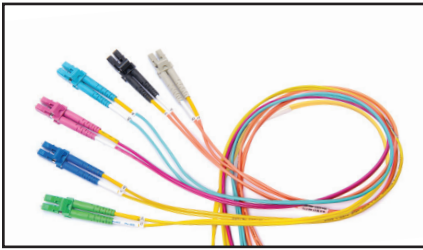


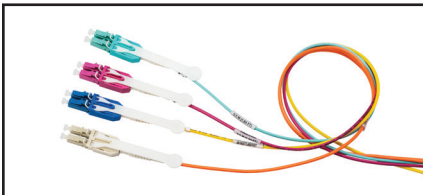
FiberExpress Pre-Terminated Assemblies FX Patch Cords



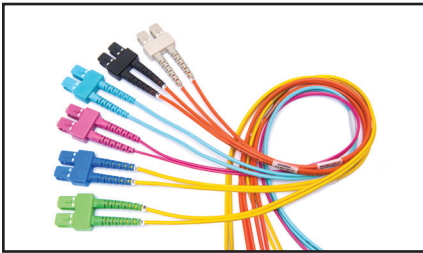
FX MPO-12(f) Patch Cords, Assortment



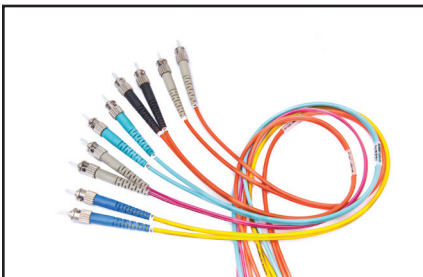
FX LC Duplex Patch Cords, Assortment



FX LC Duplex UHD Uniboot Patch Cords, Assortment



FX SC Duplex Patch Cords, Assortment



FX ST Patch Cords, Assortment

Uncomplicated, robust, versatile and conveniently available. Superior quality and performance FX patch cords deliver a robust design to withstand the rigours of daily use in both off-the-shelf standard configurations and rapid custom tailored installations.

FASTER

- Faster delivery with off-the shelf availability of standard items
- Faster identification of fiber type with Erika Violet for OM4 cable and connectors

EASIER

- Easier installation in dense cable trays with small diameter cord options
- Easier ordering with simple intelligent *SmartPart* Numbers
- Easier polarity management with industry leading easy-to-use duplex clips

BETTER

- Better architectural flexibility with low-loss OM4 0.2 dB MPO and 0.15 dB LC connectors
- Better ruggedization with larger diameter cord options
- Better flexibility with multiple connector options including LC, SC, ST and MPO
- Better quality through exhaustive design validation against TIA standards

FX Patch Cords - Standard Performance

| Description | FX OM1 | FX OM3 | FX OM4 | FX SM | FX SM/APC |
|---|--|----------|---------|----------|-----------|
| Cable Performance - LC/SC/ST | | | | | |
| IL Max. 850 nm/1300 nm (dB/Km) | 3.5/1.2 | 3.25/1.2 | 3.0/1.2 | - | |
| IL Max. 1310 nm/1550 nm (dB/Km) | - | - | - | 0.5/0.5 | |
| Fire Rating | LC/SC/ST: Riser | | | | |
| Cable Style | LC: Interconnect Duplex Zip 2 mm LC Uniboot: Interconnect Mini-Round 2 mm SC/ST/Hybrid: Interconnect Duplex Zip 3 mm | | | | |
| Connector Performance - LC/SC/ST | | | | | |
| IL Max. (dB) | 0.25 | 0.25 | 0.15 | 0.35 | 0.35 |
| Polish - RL Typ. (dB) | PC - 30 | PC - 30 | PC - 30 | UPC - 55 | APC - 65 |
| Polarity | A-TO-B / B-TO-A | | | | |
| Cable Performance - MPO | | | | | |
| IL Max. 850 nm/1300 nm (dB/Km) | 3.5/1.2 | 3.25/1.0 | 3.0/1.0 | - | |
| IL Max. 1310 nm/1550 nm (dB/Km) | - | - | - | 0.5/0.5 | |
| Fire Rating | Plenum | | | | |
| Cable Style | MPO-12: Interconnect Mini-Round 2 mm | | | | |
| Connector Performance - MPO | | | | | |
| IL Max. (dB) | 0.5 | 0.35 | 0.2 | - | 0.75 |
| Polish - RL Typ. (dB) | PC - 30 | PC - 30 | PC - 30 | - | APC - 60 |
| Polarity | Type-B | | | | |

FX Accessory Duplex Clips

| Description | Belden Part Number | | | | |
|----------------|----------------------|--------------|---------------------|--------------|--------------|
| | OM1 Beige | OM3 Aqua | OM4 Erika Violet | OS2 Blue | OS2 Green |
| LC Duplex | FXFACLLDB25T | FXFACLLDB25A | FXFACLLDB25E | FXFACLLDB25B | FXFACLLDB25G |
| Mini-LC Duplex | FXFACLLMB25N (Black) | | | | |

Faster.
Easier.
Better.



FiberExpress Pre-Terminated Assemblies (continued) FX Patch Cords

Standard FX Patch Cords

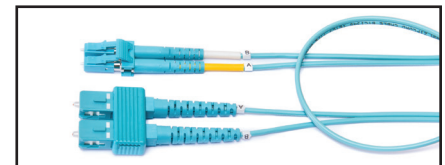
| Length (m) | OM1 Beige/Orange | OM3 Aqua | OM4 Erika Violet | OS2 Blue/Yellow | OS2/APC Green/Yellow |
|--|---------------------|-------------|---------------------|--------------------|-------------------------|
| MPO-12(8f) Female to MPO-12(8f) Female - Base8 | | | | | |
| 2 | - | FP34F4F002M | FP44F4F002M | - | FPS4F4F002M |
| 3 | - | FP34F4F003M | FP44F4F003M | - | FPS4F4F003M |
| 5 | - | FP34F4F005M | FP44F4F005M | - | FPS4F4F005M |
| MPO-12(12f) Female to MPO-12(12f) Female - Base12 | | | | | |
| 2 | - | FP3MFMF002M | FP4MFMF002M | - | FPSMFMF002M |
| 3 | - | FP3MFMF003M | FP4MFMF003M | - | FPSMFMF003M |
| 5 | - | FP3MFMF005M | FP4MFMF005M | - | FPSMFMF005M |
| MPO-24 Female to MPO-24 Female | | | | | |
| 2 | - | FP3NFNF002M | FP4NFNF002M | - | FPSNFNF002M |
| 3 | - | FP3NFNF003M | FP4NFNF003M | - | FPSNFNF003M |
| 5 | - | FP3NFNF005M | FP4NFNF005M | - | FPSNFNF005M |
| LC Duplex UHD Uniboot to LC Duplex UHD Uniboot | | | | | |
| 2 | - | FP3LULU002M | FP4LULU002M | FPSLULU002M | - |
| 3 | - | FP3LULU003M | FP4LULU003M | FPSLULU003M | - |
| 5 | - | FP3LULU005M | FP4LULU005M | FPSLULU005M | - |
| LC Duplex to LC Duplex | | | | | |
| 2 | FP1LDLD002M | FP3LDLD002M | FP4LDLD002M | FPSLDLD002M | FPSLALA002M |
| 3 | FP1LDLD003M | FP3LDLD003M | FP4LDLD003M | FPSLDLD003M | FPSLALA003M |
| 5 | FP1LDLD005M | FP3LDLD005M | FP4LDLD005M | FPSLDLD005M | FPSLALA005M |
| SC Duplex to SC Duplex | | | | | |
| 2 | FP1SDSD002M | FP3SDSD002M | FP4SDSD002M | FPSSDSD002M | FPSASA002M |
| 3 | FP1SDSD003M | FP3SDSD003M | FP4SDSD003M | FPSSDSD003M | FPSASA003M |
| 5 | FP1SDSD005M | FP3SDSD005M | FP4SDSD005M | FPSSDSD005M | FPSASA005M |
| ST to ST (Duplex Cord) | | | | | |
| 2 | FP1STST002M | FP3STST002M | FP4STST002M | FPSSTST002M | - |
| 3 | FP1STST003M | FP3STST003M | FP4STST003M | FPSSTST003M | - |
| 5 | FP1STST005M | FP3STST005M | FP4STST005M | FPSSTST005M | - |
| Hybrid: LC Duplex to SC Duplex | | | | | |
| 2 | FP1LDSD002M | FP3LDSD002M | FP4LDSD002M | FPSLDSD002M | FPSLASA002M |
| 3 | FP1LDSD003M | FP3LDSD003M | FP4LDSD003M | FPSLDSD003M | FPSLASA003M |
| 5 | FP1LDSD005M | FP3LDSD005M | FP4LDSD005M | FPSLDSD005M | FPSLASA005M |
| Hybrid: SC Duplex to ST | | | | | |
| 2 | FP1LDST002M | FP3LDST002M | - | FPSLDST002M | - |
| 3 | FP1LDST003M | FP3LDST003M | - | FPSLDST003M | - |
| 5 | FP1LDST005M | FP3LDST005M | - | FPSLDST005M | - |
| LC Simplex UHD to LC Simplex UHD, Simplex cord | | | | | |
| 2 | - | - | - | FPSLILU002M | FPSLFLF002M |
| 3 | - | - | - | FPSLILU003M | FPSLFLF003M |
| 5 | - | - | - | FPSLILU005M | FPSLFLF005M |



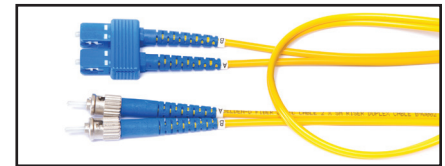
FP4LULU003M, LC Duplex UHD Uniboot to LC Duplex UHD Uniboot, OM4 Erika Violet



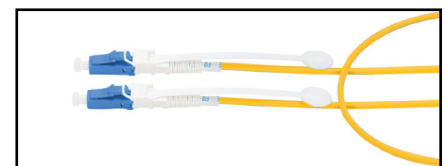
FP4LDLD003M, LC Duplex to LC Duplex, Duplex Zip Cord, OM4 Erika Violet



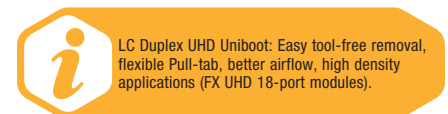
FP3LSDS003M, Hybrid LC Duplex to SC Duplex, OM3 Aqua



FPSSDST003M, Hybrid SC Duplex to ST, OS2 Blue



FPSLILU005M, LC Simplex UHD to LC Simplex UHD, OS2 Yellow



FiberExpress Pre-Terminated Assemblies (continued) FX Patch Cords

Standard FX Patch Cords

FX Patch Cord: **FP**

1. Choose Fiber Type: **3**

2. Choose Connector 1: **LD**

3. Choose Connector 2: **LD**

4. Choose Length*: **003M**

| Fiber Type | Connector 1 | Connector 2 | Length* |
|------------|--------------------------|--------------------------|-----------------------------------|
| 1 OM1 | LD LC Duplex | LD LC Duplex | 00M3 to 015M *use M as decimal |
| 3 OM3 | LC LC/APC Duplex | LA LC/APC Duplex | |
| 4 OM4 | LH LC Duplex UHD | LH LC Duplex UHD | |
| S OS2 | LI LC Duplex UHD | LI LC Simplex UHD | |
| | LU LC Duplex UHD Uniboot | LU LC Duplex UHD Uniboot | |
| | LE LC/APC Duplex UHD | LE LC/APC Duplex UHD | |
| | LF LC/APC Simplex UHD | LF LC/APC Simplex UHD | |
| | SD SC Duplex | SD SC Duplex | |
| | SA SC/APC Duplex | SA SC/APC Duplex | |
| | ST ST | ST ST | |
| | 4F MPO-12 (F) Base 8 | 4F MPO-12 (F) Base 8 | |
| | MF MPO-12 (F) | MF MPO-12 (F) | |
| | NF MPO-24 (f) | NF MPO-24 (f) | |

Tailored FX Patch Cords

FX Patch Cord: **FP**

1. Choose Fiber Type: **3**

2. Choose Connector 1: **LD**

3. Choose Connector 2: **LD**

4. Choose Length*: **003M**

5. Choose Fire Rating: **R**

6. Choose Cable Construction: **3**

7. Choose Polarity: **X**

8. Choose Jacket Color: **A**

| Fiber Type | Connector 1 | Connector 2 | Length* | Fire Rating | Cable Construction | Polarity | Jacket Color |
|------------|--------------------------|--------------------------|--|-------------|-------------------------|------------------|--------------|
| 1 OM1 | LD LC Duplex | LD LC Duplex | 00M3 to 300M M Meters use M as decimal | R Riser | 2 Duplex ZipCord 2.0 mm | X A/B (Cross) | O Orange |
| 2 OM2 | LC LC Simplex | LC LC Simplex | | P Plenum | 3 Duplex ZipCord 3.0 mm | S A/A (Straight) | Y Yellow |
| 3 OM3 | LM Mini-LC Duplex | LM Mini-LC Duplex | | L LSZH | 4 Simplex Cord 2.0 mm | A Type-A | A Aqua |
| 4 OM4 | LA LC/APC Duplex | LA LC/APC Duplex | | | 5 Simplex Cord 3.0 mm | B Type-B | E Erika V. |
| S OS2 | LB LC/APC Simplex | LB LC/APC Simplex | | | 6 Round 2.0 mm | C Type-C | |
| | LH LC Duplex UHD | LH LC Duplex UHD | | | 7 Round 3.0 mm | | |
| | LI LC Simplex UHD | LI LC Simplex UHD | | | | | |
| | LU LC Duplex UHD Uniboot | LU LC Duplex UHD Uniboot | | | | | |
| | LE LC/APC Duplex UHD | LE LC/APC Duplex UHD | | | | | |
| | LF LC/APC Simplex UHD | LF LC/APC Simplex UHD | | | | | |
| | SD SC Duplex | SD SC Duplex | | | | | |
| | SC SC Simplex | SC SC Simplex | | | | | |
| | SA SC/APC Duplex | SA SC/APC Duplex | | | | | |
| | SB SC/APC Simplex | SB SC/APC Simplex | | | | | |
| | ST ST | ST ST | | | | | |
| | 4M MPO-12 (M) Base 8 | 4M MPO-12 (M) Base 8 | | | | | |
| | 4F MPO-12 (F) Base 8 | 4F MPO-12 (F) Base 8 | | | | | |
| | MM MPO-12 (M) | MM MPO-12 (M) | | | | | |
| | MF MPO-12 (F) | MF MPO-12 (F) | | | | | |
| | NM MPO-24 (m) | NM MPO-24 (m) | | | | | |
| | NF MPO-24 (f) | NF MPO-24 (f) | | | | | |
| | ZZ OPEN | ZZ OPEN | | | | | |

Examples:

- FP3LULU020MR6XA** - FX Patch Cord, OM3, LC Duplex UHD Uniboot - LC Duplex UHD Uniboot, 20 m, OFNR, Round 2.0 mm, A-to-B, Aqua Jacket
- FP4LDLD030MR2XE** - FX Patch Cord, OM4, LC Duplex - LC Duplex, 30 m, OFNR, Duplex Zip 2.0 mm, A-to-B, Erika Violet Jacket
- FP4LDLD030MR2XE** - FX Patch Cord, OS2, SC Duplex - SC Duplex, 5 m, OFNP, Duplex Zip 3.0 mm, A-to-B, Yellow Jacket
- FP3LDLH010MR2XA** - FX Patch Cord, OM3, LC Duplex - LC Duplex UHD, 10 m, OFNR, Duplex Zip 2.0 mm, A-to-B, Aqua Jacket
- FP4MFMF005MP6AE** - FX Patch Cord, OM4, MPO-12 (F) - MPO-12 (F), 5 m, OFNP, Round 2.0 mm, Type-A, Erika Violet Jacket

Please contact Belden for any help configuring/validating SmartPart Numbers or for any other custom Engineered solutions