

FG736

Quick Start

Issue 01
Date 2025-06-06



Copyright © Huawei Technologies Co., Ltd. 2025. All rights reserved.

No part of this document may be reproduced or transmitted in any form or by any means without prior written consent of Huawei Technologies Co., Ltd.

Trademarks and Permissions



HUAWEI and other Huawei trademarks are trademarks of Huawei Technologies Co., Ltd.

All other trademarks and trade names mentioned in this document are the property of their respective holders.

Notice

The purchased products, services and features are stipulated by the contract made between Huawei and the customer. All or part of the products, services and features described in this document may not be within the purchase scope or the usage scope. Unless otherwise specified in the contract, all statements, information, and recommendations in this document are provided "AS IS" without warranties, guarantees or representations of any kind, either express or implied.

The information in this document is subject to change without notice. Every effort has been made in the preparation of this document to ensure accuracy of the contents, but all statements, information, and recommendations in this document do not constitute a warranty of any kind, express or implied.

Huawei Technologies Co., Ltd.

Address: Huawei Industrial Base
Bantian, Longgang
Shenzhen 518129
People's Republic of China

Website: <https://www.huawei.com>

Email: support@huawei.com

Contents

1 Device Appearance.....	1
2 Description of Indicator.....	3
3 Description of Ports or Buttons.....	4
4 Network Expansion.....	6
4.1 Wired Network Expansion.....	6
4.2 Wireless Network Expansion.....	7
5 Technical Specifications.....	11
6 FAQs.....	12

1 Device Appearance

The Huawei eKitOptiX FG736 is an edge router (BE 3600Mbps Dual-Band Edge ONT) that supports dual-band Wi-Fi 7. It provides users with ultra-gigabit broadband access using Ethernet/Wi-Fi uplink technologies.



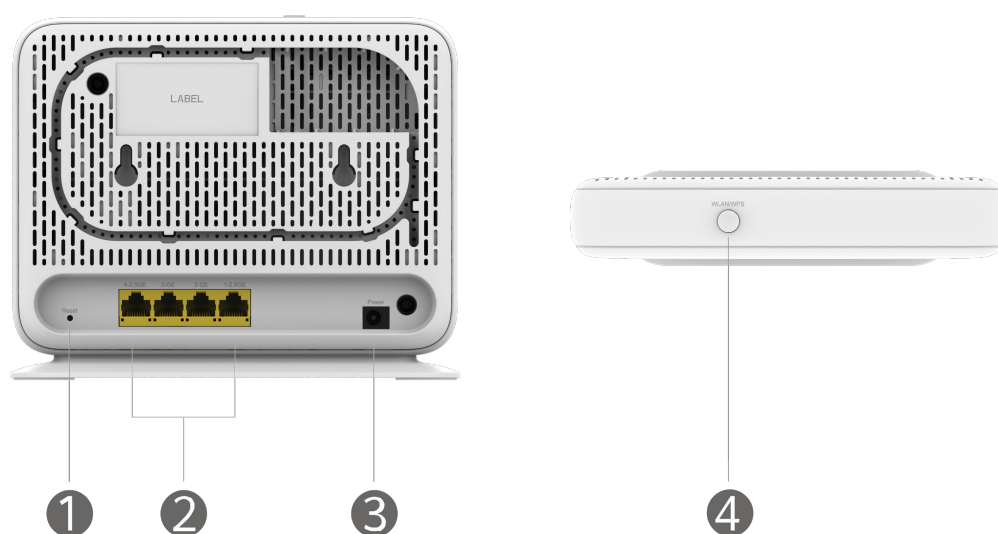
 **NOTE**

- The appearances shown in this document may differ from the actual appearances of the products. The actual products prevail.
- The device can only be used indoors. It can be placed horizontally on a desktop. Do not install it in other modes, such as on the ceiling.
- Install devices only by professional personnel. Do not install devices without permission.
- Keep a clearance of more than 10 cm around the device to ensure proper ventilation.
- Keep the device away from electric appliances that generate strong magnetic or electric fields, such as microwave ovens.
- Do not use detergents, gasoline, ammonia water, or corrosive chemical reagents to clean the device.
- The tools and auxiliary materials that are not delivered with the equipment must be prepared by professional personnel.

2 Description of Indicator

Status	Description
White: steady on	Internet access is available.
Red: steady on	Internet access is unavailable. <ul style="list-style-type: none">• The edge ONT is being powered on.• The edge ONT is not connected to the upstream gateway.
Red: Blinking slowly (once per second)	The edge ONT has detected a device that can be paired.
Red: Blinking quickly (twice per second)	The edge ONT is being paired with Huawei gateway in one-click mode.
	The edge ONT is performing WPS pairing.

3 Description of Ports or Buttons



No.	Port/button	Description
1	Reset button	When the FG736 is starting, use a needle-shaped object to press and hold this button for more than 2 seconds until indicator turns off. After the device restarts and the indicator turns on, the factory settings are restored. NOTE Exercise caution when pressing the button. If you cannot access the Internet after the device is restored to factory settings, contact your service provider for help.
2	Network ports	The port is auto-negotiated to a LAN port when connected to a computer or STB, and to a WAN port when connected to the LAN port of an Internet gateway.
3	Power	Connects to the power adapter.

No.	Port/button	Description
4	WLAN/WPS	<ul style="list-style-type: none">• When the wireless function (WLAN) is enabled, press the WLAN/WPS switch for 1s to 5s to start Wi-Fi protected setup (WPS) negotiation.• When the wireless function (WLAN) is enabled, press and hold the button WLAN/WPS switch for more than 5s to turn off the wireless function (WLAN).• When the wireless function (WLAN) is disabled, tap the WLAN/WPS switch for more than 1s to turn on the wireless function (WLAN).

4 Network Expansion

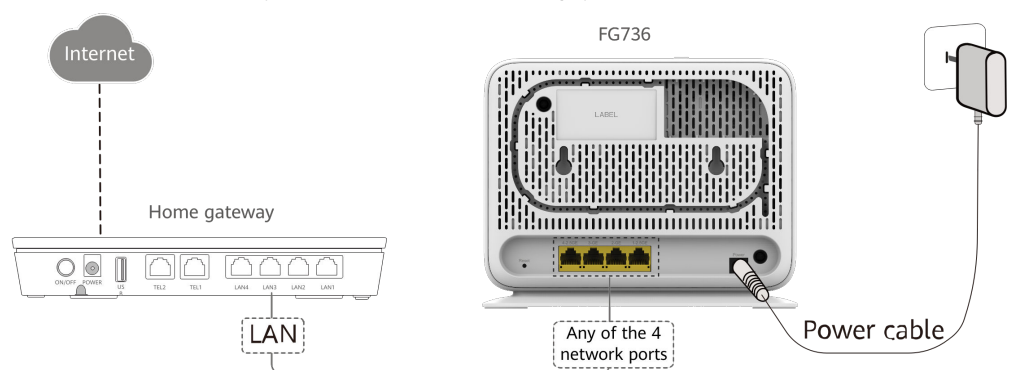
4.1 Wired Network Expansion

If you have a wired network but have no Wi-Fi at home, you can connect the FG736 to the wired network using a network cable to set up a Wi-Fi network.

NOTICE

This section assumes that there is no Wi-Fi in your home. If you have a Wi-Fi network at home, you can also refer to this section to expand the network.

1. Connect cables.
 - a. Use a network cable to connect the any of the 4 network ports of FG736 and the **LAN** port of the home gateway.
 - b. Connect the FG736 power cable to a nearby power outlet.

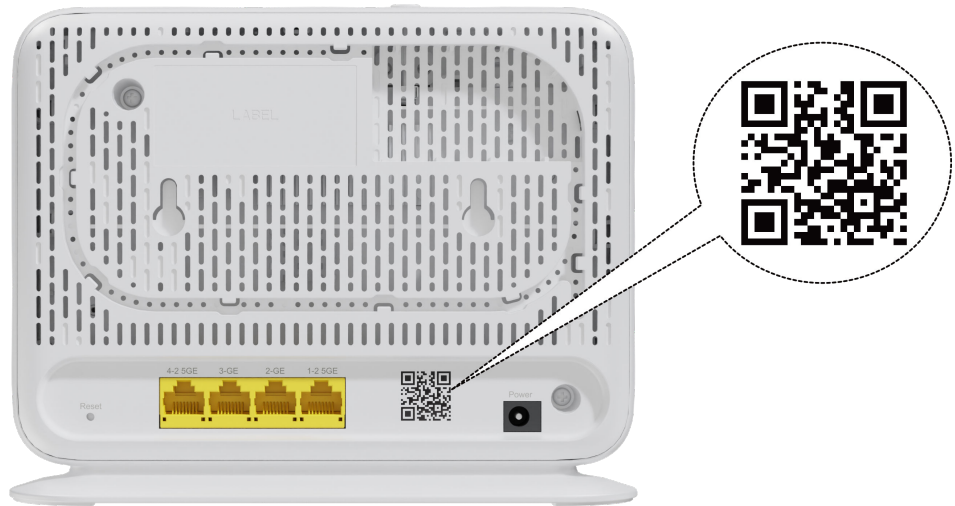


NOTE

If your home gateway is a Huawei smart gateway (consult your device provider for more information), the Wi-Fi SSID and password of the gateway will be automatically synchronized to the FG736, and there is no need to reset the Wi-Fi parameters of the FG736.

2. Set Internet access and Wi-Fi parameters for the FG736.

- a. Connect a mobile phone or computer to the FG736 Wi-Fi. For the Wi-Fi name and password, see the **SSID** and **WLAN Key** on the device nameplate.
- b. Scan the QR code on the rear of the FG736 using a mobile phone or open the browser and enter the IP address (see the nameplate at the rear of the FG736).



- c. Enter the login username and password (see the nameplate at the rear of the FG736).

The FG736 will automatically detect your Internet access mode.

NOTE

If the device detects that the Internet access mode is dial-up, you need to enter the broadband account and password. If you forget the broadband account and password, contact your ISP to retrieve the account and password.

- d. Set the Internet access mode and its corresponding information on the **Internet Access** page.
- e. Modify the Wi-Fi SSID and password on the **My Wi-Fi** page, and reconnect to the new Wi-Fi to access the Internet.

4.2 Wireless Network Expansion

When you already have Wi-Fi in your home and need to expand the Wi-Fi coverage, you can use the **WLAN/WPS** button to connect the FG736 to the existing Wi-Fi network.

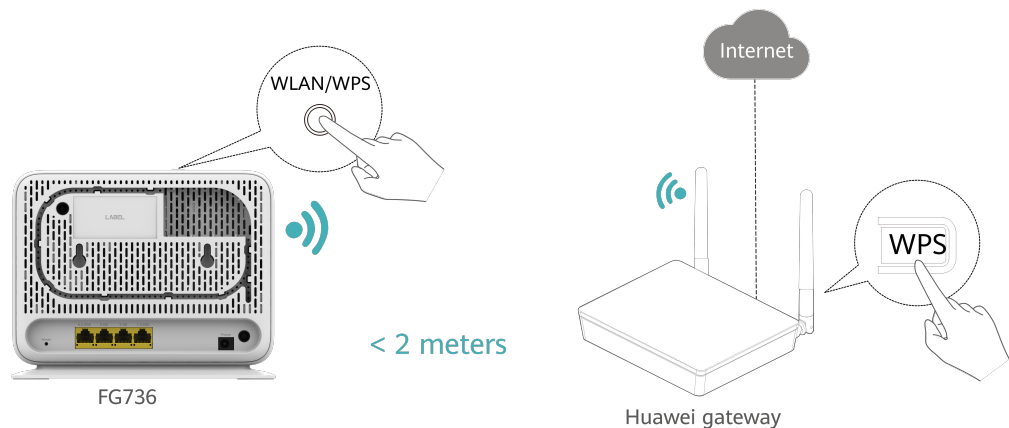
NOTICE

- This section assumes that your home network supports WPS features. If your home network does not support WPS features, you can log in to the FG736 web page to configure parameters and expand Wi-Fi.
- Three-level Wi-Fi cascading is not allowed on the FG736 network. A maximum of two-level Wi-Fi cascading is supported. One-level Wi-Fi cascading is recommended.

WPS Pairing Operation (Used Together with a Huawei Gateway*)

* indicates the FG736 or a Huawei gateway that supports SmartLink (for details, contact the service provider).

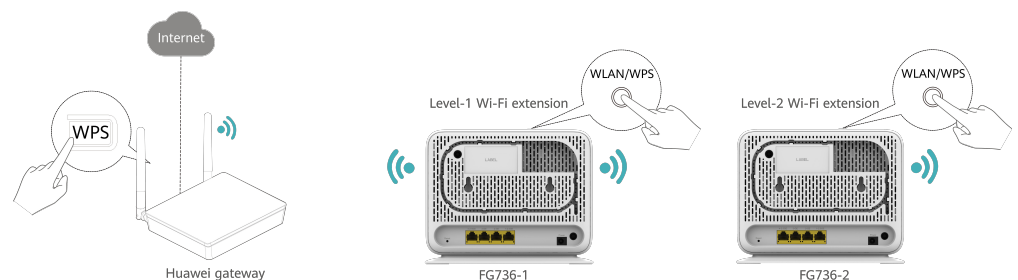
1. Place the FG736 close to the home gateway (within 2 meters) and power it on.
2. After the FG736 starts up, press and hold the **WLAN/WPS** button of the FG736 and the **WPS** button of the home gateway for 3 seconds in turn within 2 minutes.



NOTE

The indicator of the FG736 blinks during the pairing.

3. After the indicator of the FG736 turn steady white, the FG736 is connected to the Internet.
4. Move the FG736 to a room where you need to expand Wi-Fi and power it on. After the indicator turns steady white, Wi-Fi is expanded successfully.
5. Configuring Level-2 Wi-Fi Extension.
 - a. Place the second FG736 (FG736-2) close to the first FG736 (FG736-1) (within 2 meters) and power it on.
 - b. Within 2 minutes, press and hold the **WLAN/WPS** buttons of the FG736-1 and FG736-2 for about 3s. If the FG736-1 blinks red and the FG736-2 blinks red, two APs are pairing. When the FG736-1 and the FG736-2 indicators change to steady white, the FG736-2 is connected to Wi-Fi and level-2 Wi-Fi extension is successful.

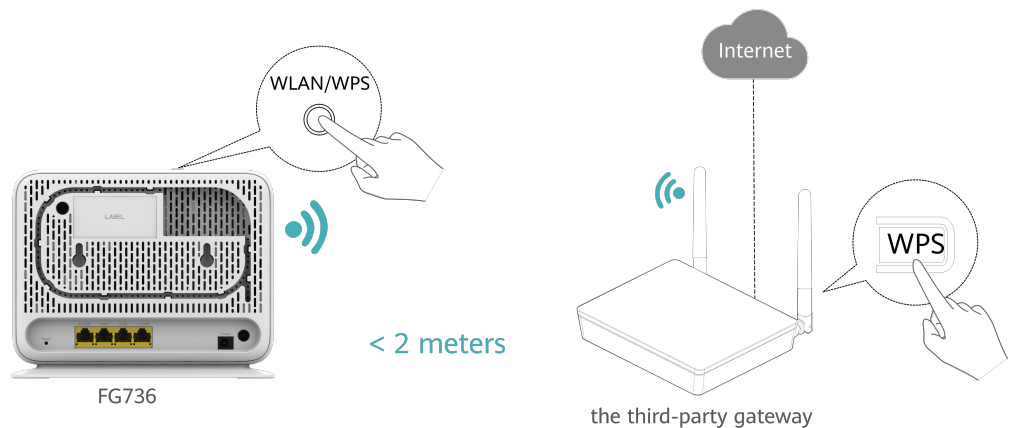


 NOTE

If your home gateway is a Huawei smart gateway (consult your device provider for more information), the Wi-Fi SSID and password of the gateway will be automatically synchronized to the FG736. Otherwise, use the Wi-Fi SSID and password of the FG736 (see the nameplate at the rear) to access the Internet.

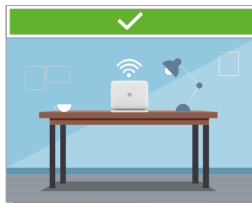
WPS Pairing Operation (Used Together with a Third-party Gateway*)

1. Place the FG736 close to the third-party gateway (within 2 meters) and power it on.
2. After the FG736 starts up, the third-party gateway can discover the FG736, and the WPS indicator of the third-party gateway blinks slowly.
3. Press the **WLAN/WPS** button of the FG736 for about 3 seconds until the indicator blinks quickly.
4. Press the **WPS** button of the third-party gateway once (contact the service provider for the operation of the third-party gateway). The WPS indicator changes to blink quickly.

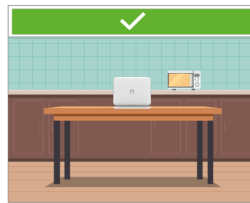


5. After the indicator of the FG736 turns steady white, the FG736 is connected to the Internet.
6. Move the FG736 to a room where you need to expand Wi-Fi and power it on. After the indicator turns steady white, Wi-Fi is expanded successfully.

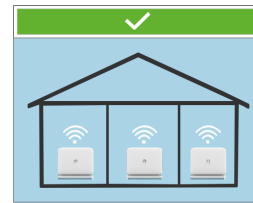
Layout Principles



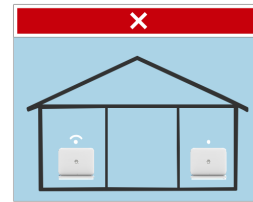
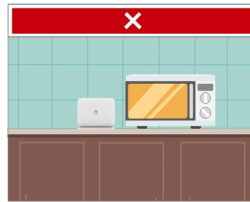
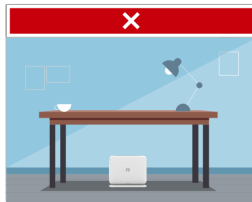
Place the device on desktops instead of on the floor.



Place the device far away from interference sources, such as microwave ovens and refrigerators.

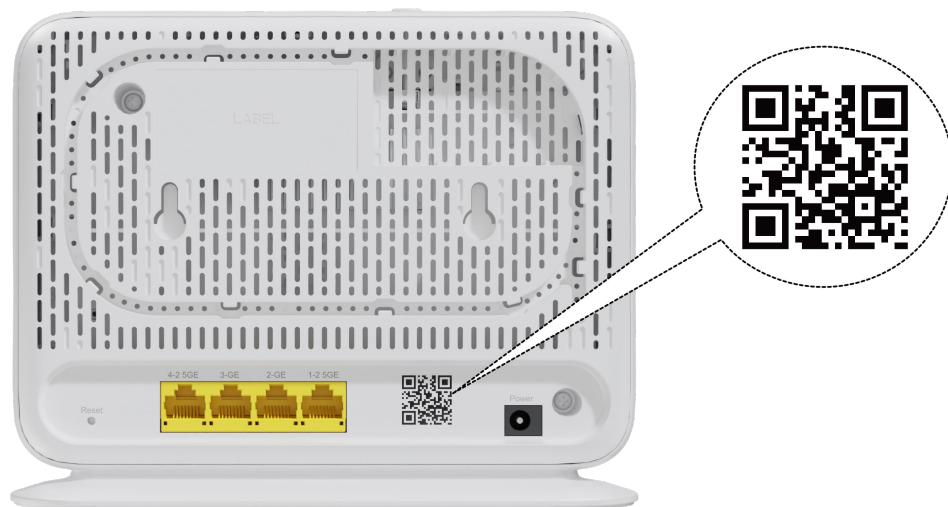


No more than one wall is allowed between devices.



Wi-Fi Parameters Configuration

1. Connect a mobile phone or computer to the FG736 Wi-Fi. For the Wi-Fi name and password, see the **SSID** and **WLAN Key** on the device nameplate.
2. Scan the QR code on the rear of the FG736 using a mobile phone or open the browser and enter the IP address (see the nameplate at the rear of the FG736).



3. Enter the login username and password (see the nameplate at the rear of the FG736).

NOTE

If the login username and password are synchronized from those of a gateway or router, enter login username and password of the gateway or router as prompted.

4. Modify the Wi-Fi SSID and password on the **My Wi-Fi** page, and reconnect to the new Wi-Fi to access the Internet.

NOTE

If the Wi-Fi name and password are synchronized from those of a gateway or router, and there is no need to reset the Wi-Fi parameters of the FG736.

5 Technical Specifications

Project	Specifications
Dimensions (H x W x D)	140 mm × 188 mm × 35 mm (excluding the base)
Weight (excluding adapter)	About 325 g
Rated power supply	Powered through a power adapter. For details, see the product nameplate.
Operating Ambient Temperature	0°C–40°C
Operating ambient humidity	5% to 95%, non-condensing
Storage temperature and humidity	Compliant with ETSI EN 300 019-1-1 Class 1.2

NOTE

The valid storage period of the product is nine months. The valid storage period refers to the period during which the product can be stored in a storage environment that meets the ETSI EN 300 019-1-1 Class 1.2 standard without performance degradation.

6 FAQs

What can I do if a problem occurs when I set the Internet access mode in a wired network expansion scenario?

You can check the indicator status of the Huawei eKitOptiX FG736. If the indicator is steady red, Internet access is unavailable.

1. Cannot find the Wi-Fi of the edge ONT: Ensure that the device is powered on. Wait for a moment. After the device is started, scan for the Wi-Fi again.
2. Cannot access the configuration page: Ensure that the mobile phone is connected to the Wi-Fi network of the device and enter the IP address in the address box of a browser. (For details about the IP address, see the product nameplate.)
3. Cannot access the Internet after the settings: Ensure that the home gateway connected to the device can access the Internet. If a network cable is connected, ensure that network cable is connected securely.

How to restore the factory settings of an edge ONT?

Press and hold the **Reset** button of the device for more than 2 seconds using a needle, and release the button after the indicator turns off. After the device restarts and the red indicator turns on, the factory settings are restored.

NOTE

After the device is restored to factory settings, the device configuration parameters are cleared and need to be reconfigured.

Does the edge ONT support 5GHz Wi-Fi? How to connect to the 5GHz Wi-Fi?

Yes. The device supports 5GHz Wi-Fi. By default, the 2.4GHz/5GHz Wi-Fi names are the same. The device automatically connects to an optimal frequency band. To fix the connection to the 5GHz frequency band, disable the Dual-Band Steering as follows:

1. Connect a mobile phone to the Wi-Fi network of the edge ONT.
2. Enter the IP address in the address box of a browser and press **Enter**. (For details about the IP address, see the product nameplate.)

3. On the displayed login page, enter the login username and password as prompted.
4. Choose **My Wi-Fi** and turn off **Dual-Band Steering**. Then, two Wi-Fi names are displayed. Connect to the Wi-Fi with the suffix _5G.


How to change the Wi-Fi name and password of an edge ONT?

1. Connect a mobile phone to the Wi-Fi network of the edge ONT.
2. Enter the IP address in the address box of a browser and press **Enter**. (For details about the IP address, see the product nameplate.)
3. On the displayed login page, enter the login username and password as prompted.
4. Choose **My Wi-Fi** on the web page, and change the Wi-Fi name and password.

NOTE

If the Wi-Fi name and password are synchronized from those of a gateway or router, see the changing method described for the gateway or router.

How can I retrieve my Wi-Fi password?

1. Use a network cable to connect the network port of the edge ONT to a PC.
2. Enter the IP address in the address box of a browser and press **Enter**. (For details about the IP address, see the product nameplate.)
3. On the displayed login page, enter the login username and password as prompted.
4. Choose **My Wi-Fi** on the web page, click  after **Wi-Fi Password** text box to view the Wi-Fi password.

How can I retrieve my login password?

1. Restore the factory settings of an edge ONT.
Press and hold the Reset button of the device for more than 2 seconds using a needle, and release the button after the indicator turns off. After the device restarts and the red indicator turns on, the factory settings are restored.
2. Enter the IP address in the address box of a browser and press **Enter**. (For details about the IP address, see the product nameplate.)
3. Follow the guide to set administrator login password.