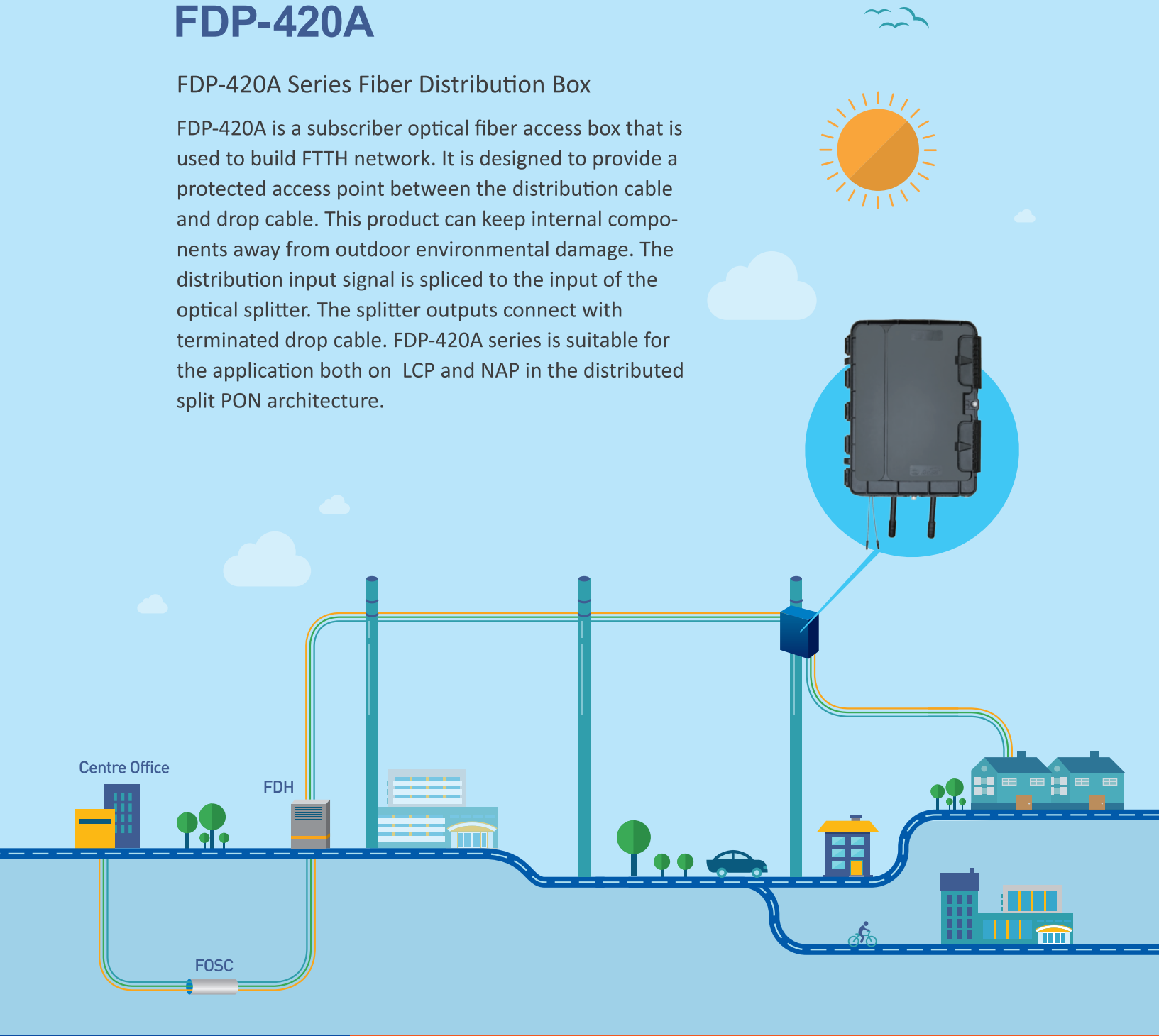


# Fiber Distribution Box

## FDP-420A

### FDP-420A Series Fiber Distribution Box

FDP-420A is a subscriber optical fiber access box that is used to build FTTH network. It is designed to provide a protected access point between the distribution cable and drop cable. This product can keep internal components away from outdoor environmental damage. The distribution input signal is spliced to the input of the optical splitter. The splitter outputs connect with terminated drop cable. FDP-420A series is suitable for the application both on LCP and NAP in the distributed split PON architecture.



**FiberHome Telecommunication Technologies Co., Ltd.**

Add: No. 67 Dongxin Road, Guandong Industrial Park,  
Hongshan District, Wuhan, Hubei, P.R.China

**Tel: +86-27-87697183**  
**Fax: +86-27-87697086**

**FiberHome**



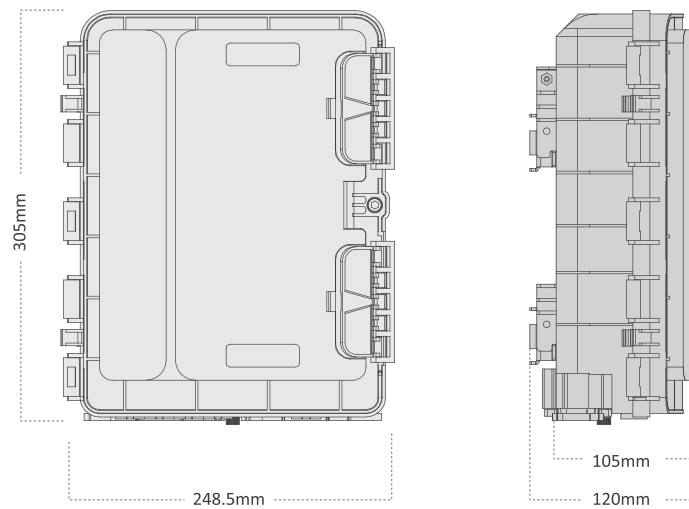
## 1. Features

- Outdoor application and good UV resistant
- Numerous applications such as mid-span, branch and direct splice
- High strength material with good weather adaptability
- Protection level: IP65
- Apply to wall-mounted, pole-mounted
- Different splitter panels support micro splitter or LGX splitter with adapter
- Excellent sealing performance. It is compatible with different optical cable

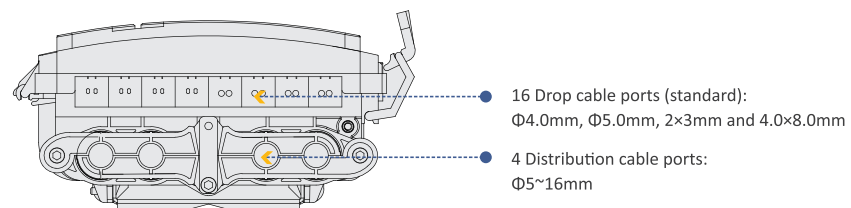


## 2. Specification

- Box size



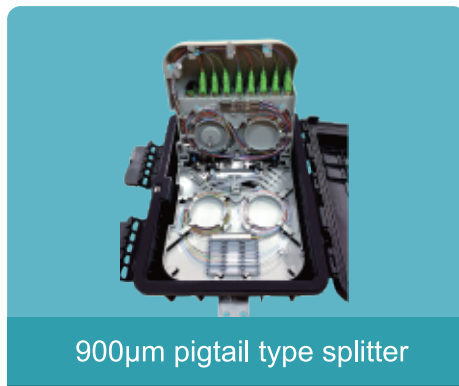
- Bottom of FDP-420A



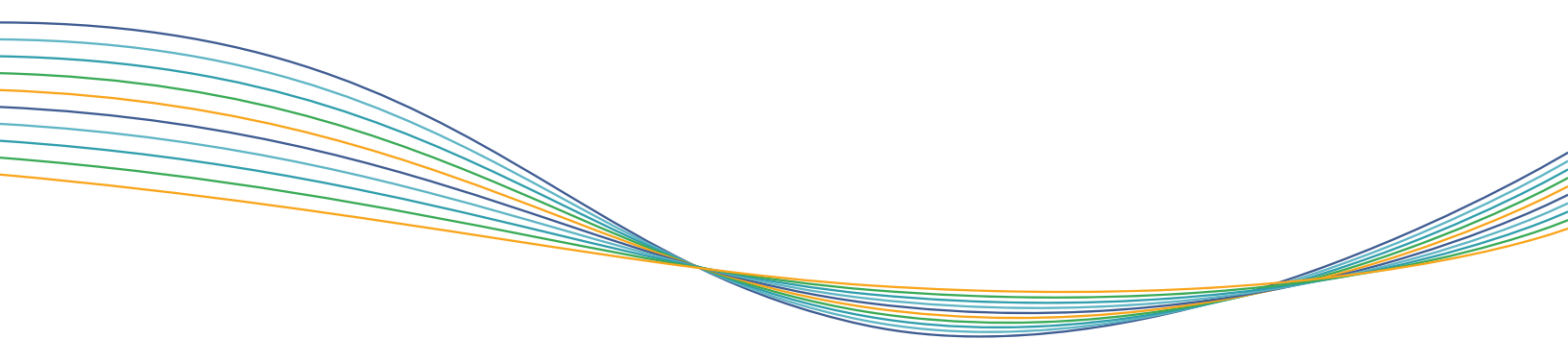
### 3. Technical Specification

FDP-420A-XX-S and FDP-420A-XX-C are designed to support different splitter types.

Type	Splitter type	Number of splitter	Max. splice capacity	Max. SC adapter capacity
FDP-420A-XX-S	900μm pigtail type splitter	1×4/1×8: 2pcs	20Fx2	18pcs
		1×16: 1pcs	20F	
FDP-420A-XX-C	LGX splitter	1×4/1×8: 2pcs	20F	18pcs

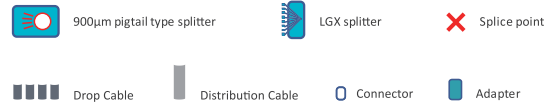


Item	Specification
Dimension(mm)	248.5×305×120
Splice capacity	Maximum 40F
Termination capacity	18
Protection level	IP65
Color	Black
Operating temperature( C )	-40~+65

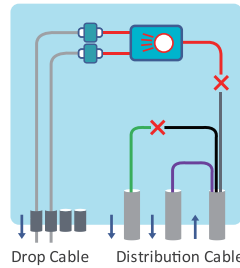




## 4. Cable Route



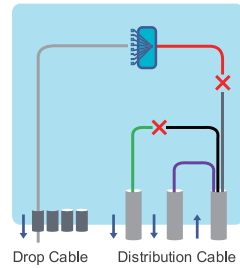
Type 1  
**900µm pigtail type splitter:**  
 FDP-420A-XX-S



For 900µm pigtail splitter type box, the distribution cable is spliced to the input pigtail of the splitter and connect with pre-connected drop cable (or terminated with field assembly connector).



Type 2  
**Cassette splitter:**  
 FDP-420A-XX-C



For LGX splitter type box, distribution cable is spliced to the input pigtail of the splitter. The splitter is connected to pre-connected drop cable (or terminated with field assembly connector ).



## 5. Accessory

	<b>Nylon Cable tie</b> Function: Fixing loose tubes in cables		<b>Fiber protecting tube</b> Function: Protecting bare fiber
	<b>Splice protective sleeve</b> Function: Splicing fiber protection		<b>Hose clamp</b> Function: Fasten cable
	<b>Black Insulation Tape</b> Function: Fixing cables and fibers		<b>Rolling protecting tube</b> Function: Managing fibers and cable tubes
	<b>Allen key</b> Function: Unscrew the screws		<b>Mounting screw</b> Function: Fixing box