

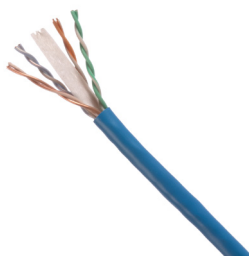
TX6™ ER Category 6 U/UTP 22 AWG Copper Cable

North America (NA)

PANDUIT®
SPECIFICATION SHEET

SPECIFICATIONS

Category 6 cable shall meet ANSI/TIA-568-2.D Category 6 component Standard. The conductors shall be 22 AWG construction with FEP insulation. The copper conductors shall be twisted in pairs, separated by tape divider, and covered by a low smoke, flame-retardant (CMP) PVC jacket. Provides less voltage drop, increased current carrying capacity and reduced heat generation for PoE applications. The cable shall exceed the 100-meter distance for security, ICT, building automation, and IoT applications.



TECHNICAL INFORMATION

Electrical performance:	Certified channel performance in a 4-connector configuration up to 100 meters and meets ANSI/TIA-568-2.D Category 6 Standard at swept frequencies up to 250MHz Certified component performance up to 100 meters and meets the component requirements of ANSI/TIA-568-2.D Category 6 component Standard at swept frequencies up to 250 MHz
Standards compliance:	UL Listed CMP-LP (0.7A)
Conductors/insulators:	22 AWG solid copper covered by FEP insulation
Insulation diameter:	0.045 in. - 0.050 in. (1.14mm - 1.27mm)
Flame rating:	Plenum – NFPA 262 and CSA FT-6
PoE compliance:	Meets IEEE 802.3af, IEEE 802.3at and IEEE 802.3bt for PoE applications
Installation tension:	25 lbf (110N) maximum
Temperature rating:	32°F to 122°F (0°C to 50°C) during installation -4°F to 221°F (-20°C to 105°C) during operation
Cable jacket:	Low smoke, flame-retardant (CMP) PVC
Cable diameter:	0.243 in. (6.1mm) nominal
Cable weight:	38 lbs./1000 ft. (18 kg/305m)
Packaging:	1000 ft. (305m) in an easy payout carton Package tested to ISTA Procedure 1A

KEY FEATURES AND BENEFITS

Longer runs for labor and material savings:	Provides power and bandwidth at extended distances of 150 meters based on the IEEE 802.3 application standards. Maximum distance is subject to change based on manufacturers equipment and varying environmental conditions.
High powered applications:	Larger AWG conductors for higher power applications (reduced heat generation, higher maximum current carrying capabilities, improved attenuation).
Limited Power (LP) Listing:	Complies with Category 6 requirements up to a 100-meter channel with a 0.7A LP certification.
Extended temperature range:	Allows operation in 105°C (221°F) ambient environment providing error-free performance in high-density cabinets and large cable bundles running PoE+ or PoE++ applications
Reelex™ packaging:	Compact carton ensures proper performance and provides quick installation
Packaging options:	Available in longer length packaging

APPLICATIONS

Interoperable and backward compatible, the TX6 U/UTP Cabling System provides design flexibility to protect network investments well into the future. With certified performance to the ANSI/TIA-568-2.D Category 6 Standards for a 100 meter channel, this system will support the following applications:

- Ethernet 10BASE-T, 100BASE-T (Fast Ethernet), 1000BASE-T (Gigabit Ethernet)
- 155 Mb/s ATM, 622 Mb/s ATM, 1.2 Gb/s ATM
- Token Ring 4/16

TX6 Category 6 U/UTP 22 AWG Copper Cable

Plenum: PUP6C2204**-WZ

**Colors: BU (Blue), WH (White), RD (Red), OR (Orange), YL (Yellow), GR (Green), VL (Violet), IG (International Gray), or BL (Black) Visit www.panduit.com for connectivity components.



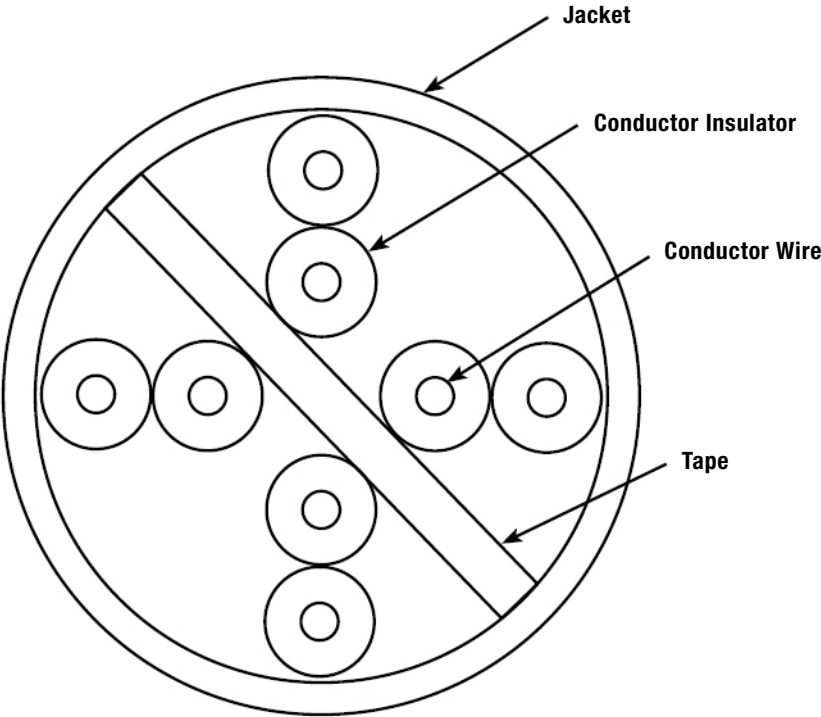
All listed part numbers are compliant with the U.S. Trade Agreements Act (TAA) for purchases shipped to customers in the United States.

TX6™ ER Category 6 U/UTP 22 AWG Copper Cable

ADDITIONAL INFORMATION

Mechanical Testing	
Ultimate Breaking Strength	>400 N (90 lbf)
Minimum Bend Radius	4 x cable diameter
Engineering Testing	
Nominal Velocity of Propagation (NVP)	74% nominal
Operating Voltage, Maximum	80 V

ENGINEERING DRAWING



WORLDWIDE SUBSIDIARIES AND SALES OFFICES

PANDUIT US/CANADA Phone: 800.777.3300	PANDUIT EUROPE LTD. London, UK Phone: 44.20.8601.7200	PANDUIT SINGAPORE PTE. LTD. Republic of Singapore Phone: 65.6305.7575	PANDUIT JAPAN Tokyo, Japan Phone: 81.3.6863.6000	PANDUIT LATIN AMERICA Guadalajara, Mexico Phone: 52.33.3777.6000	PANDUIT AUSTRALIA PTY. LTD. Victoria, Australia Phone: 61.3.9794.9020
--	---	---	--	--	---

For a copy of Panduit product warranties, log on to www.panduit.com/warranty



For more information
Visit us at www.panduit.com
Contact Customer Service by email: cs@panduit.com
or by phone: 800.777.3300

© 2024 Panduit Corp.
ALL RIGHTS RESERVED.
COSP619-WW-ENG
8/2024