



WORKLIGHTS

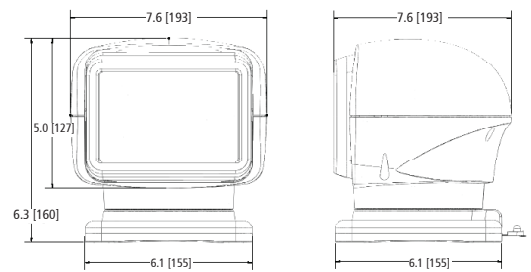


FOCUS360™ SERIES

Ten 5-Watt LEDs

ECCO's EW3010 Series Remote Spotlights are multifunctional, motorized searchlights featuring a 12-24 VDC operation. Both spotlights can be installed wirelessly and are protected by a polycarbonate lens and the housings are available in black or white.

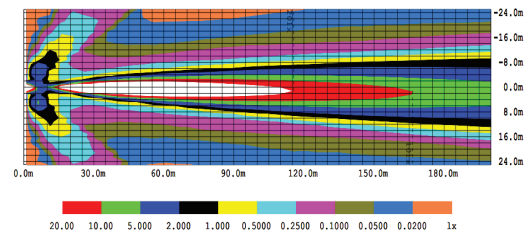
The EW3010/3011 offers full 360° continuous rotation, a 135-degree tilt range and features an optional hardwired in-dash joystick controller. The spotlight also has a home setting that automatically returns the light to its original position upon powering off the device. ASA resin housing makes the EW3010/3011 corrosion, UV and impact resistant and also feature patent pending reflective optics.



Models

| PART NO. | HOUSING COLOR | CANDELAS | TYPE | AMPS |
|-------------|---------------|----------|------------------------------|------|
| EW3010 | Black | 460,000 | Spot | 2.7 |
| EW3011 | White | 460,000 | Spot | 2.7 |
| EW3011-DEL2 | White | 460,000 | Spot, Delphi 2-Pin Connector | 2.7 |

ISOLUX



Features and Benefits

- 12-24 VDC
- 4,452 ft | 1,357 m beam distance
- 360° continuous rotation, 135° tilt range
- Ten 5-watt LEDs
- Permanent or magnet mount available
- "Return to Home" setting will automatically return light to original position
- Aluminum heatsink lighthouse
- Polycarbonate housing

Replacement Parts & Accessories

| Description | Part No. |
|---|----------|
| Replacement Remote | ER3011 |
| Flood Diffuser (EW3010/11) | EZ3010F |
| Colored Lens (EW3010/11) | EZ3010X* |
| In-Dash Joystick Controller (EW3010/11) | EZ3018 |
| 5 Meter Joystick Cable (EZ3011) | EZ3012 |
| Joystick Cable Extension (EZ3011) | EZ3013 |
| Magnet Mount Kit, Black (EW3010) | EZ3016 |
| Magnet Mount Kit, White (EW3011) | EZ3017 |

Where X* indicates color: A=Amber, R=Red, G=Green