

**DS-K3G411CLX**  
**Pro Tripod Turnstile**

- Barrier open/closed, free accessing, forbidden mode are selectable.
- LED indicates the entrance/exit and passing status.
- Fire alarm passing: when the fire alarm is triggered, the barrier will be dropped automatically for emergency evacuation.
- Easy integration of any 3rd access control system via relay output.

## ▪ Specification

System	
Motor	/
MCBF	≥ 3 million times
Interface	
Exit button	2
Fire alarm input	1
Hardware	
Access controller	Not supplied
Function	
Audio prompt	Not support
Keypad configuration	Support
General	
Throughput	30 to 60 persons per minute The actual throughput is affected by the person passing rate and passing method.
Lane width	550 mm (21.65")
Barrier material	1.2 mm stainless pipe
Pedestal material	SUS304 stainless steel 1.2 mm
Power consumption	Standby: 15 W Working: 30 W Peak: 40 W
Working temperature	-20 °C to 65 °C (-4 °F to 149 °F)
Working humidity	0% to 95% (No condensing)
Protective level	/
Dimensions	Without package: 502 mm × 202 mm × 1010 mm (19.8" × 8.0" × 40.0") With package: 700 mm × 430 mm × 1140 mm (27.56" × 16.93" × 44.88")
Weight	Net: 26.65 kg (58.75 lb) Gross: 32.75 kg (72.2 lb)
Approval	CE/CB/RoHS/REACH/WEEE
Power supply method	Power supply: 100 to 240 VAC~, 50/60 Hz, 1A-0.5A
Configuration	
Lane width	550
Module selection	NO
Pedestal width	202 mm
Wall distance	20 mm
Base	YES
Barrier material	Stainless steel pipe
Application environment	Indoor
Side pedestal	Yes
Side pedestal type	Fence
Movement Protrusion Width	29 mm

## ▪ Note

The main element of the turnstile is stainless steel, which is rust less (antioxidant) and corrosion resistant (The anti-corrosion ability in the medium of acid, alkali, and salt). In order to keep the stainless steel from being oxidized or corroded, you should clean and care the turnstile surface periodically.

**The instructions and tips for maintaining the turnstile are as follows:**

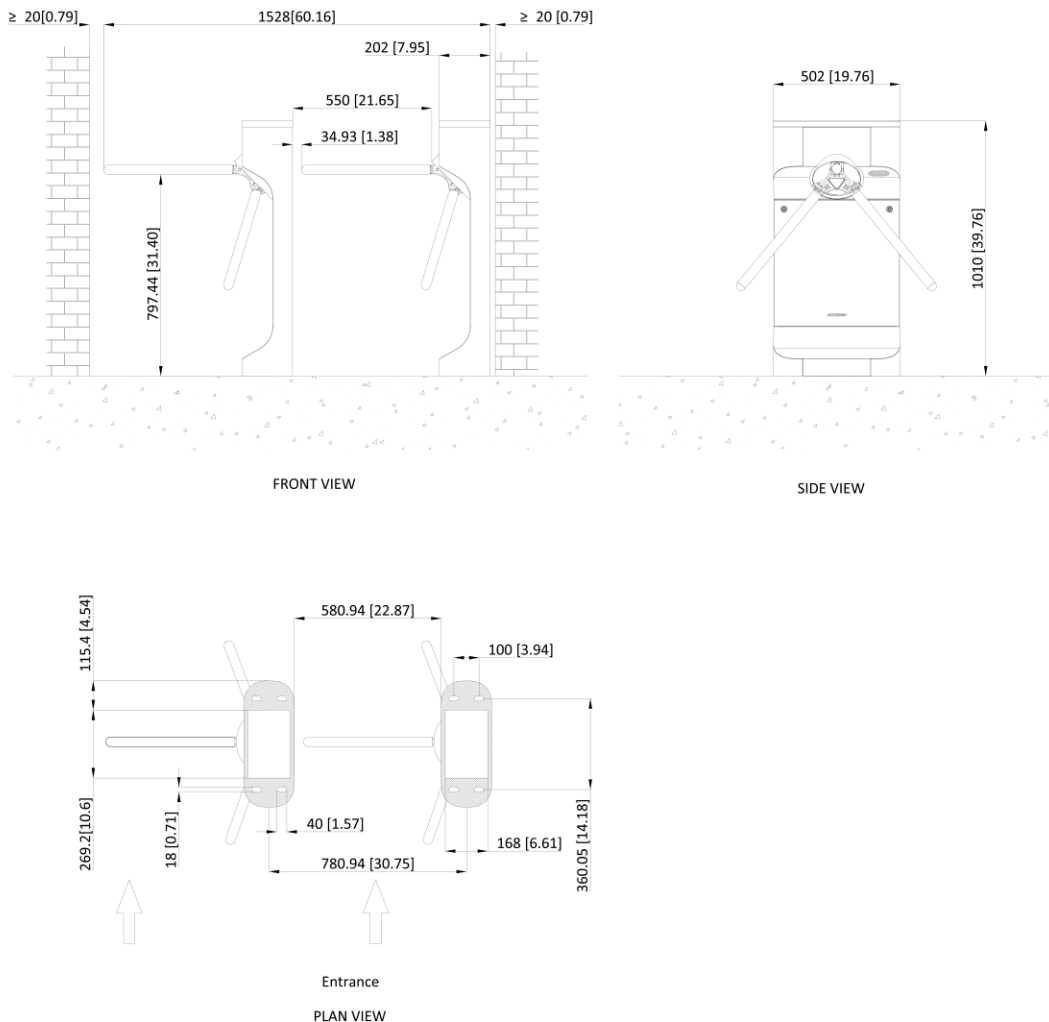
1. Select different stainless steel types according to the variety of the environments. You can select 304 stainless steel for common circumstances and 316 stainless steel for the scenarios of seaside and chemical plants.
2. Keep the device surface clean and dry.
3. Use non-woven cloth and ethyl alcohol to clean the dirt on the device surface.
4. Use sourcing pad (do not use mesh cleaning ball) to clean the rust on the device surface by following the wire drawing on the stainless steel. And then use non-woven cloth and stainless steel cleaner to wipe the device surface.
5. Clean and maintain the device by using non-woven cloth and stainless steel cleaner periodically. It is suggested to clean the device every month in common circumstances and every week for severe environments (seaside and chemical plants for instance).

### ▪ Available Model

DS-K3G411CLX-R/Dm55

DS-K3G411CLX-R/Pa-Dm55

### ▪ Dimension



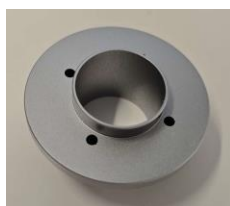
Unit: mm [inch]

SCALE 1:1

### ▪ Accessory

### ▪ Included

DS-KSB02-Pa



▪ Optional

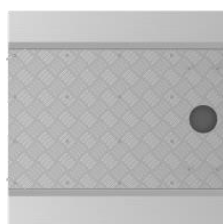
DS-K7CR01



DS-KEB30-AC



DS-KSM01/G411



# See Far, Go Further



[www.hikvision.com](http://www.hikvision.com)  
[support@hikvision.com](mailto:support@hikvision.com)

