

Config welink guide

1. IOS app download link (beta version):

<https://www.pgver.com/LX4Z>

2. android app download link(beta version)::

<https://www.pgver.com/d62b3706869e4d3adb900b76ffa1304f>

3. Operate video for reference:

<https://drive.google.com/file/d/1AVaYwLMbXOFs2T3QgUO82hpnkmlSnx5q/view?usp=sharing>

4. Kindly notice:

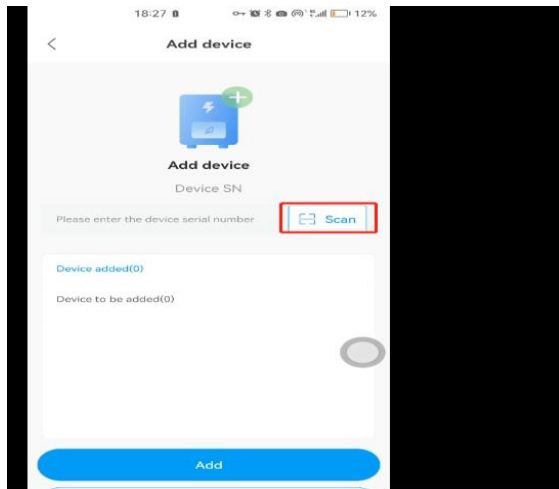
4.1 Mobile phone app need enable bluetooth function during config welink.

4.1 For first time config, the inverter bluetooth function will auto be on, after 30 minutes or second time config, the bluetooth of function will be off.

so in this case turn on AC grid, wait for 3 seconds, then turn off AC grid, wait for 3 seconds, then turn on AC grid, wait for 3 seconds.

then turn off AC grid, then bluetooth function will work again.

- 4.2 For follow step, scan the inverter code



Need scan like follow, Don't scan the QR code

