

ICOM INSTRUCTIONS

CLONING SOFTWARE CS-A120

This cloning software is designed to perform data entry, settings, and cloning for the IC-A120 VHF AIR BAND TRANSCEIVERS.

The CS-A120 has a Help file to describe functions and operations.

These instructions are based on using Microsoft® Windows® 7.

System requirements

The following PC and cable are required to use the CS-A120.

PC

- Microsoft® Windows® 10 (32/64 bit)
- Microsoft® Windows® 8.1 (32/64 bit)*
- Microsoft® Windows® 8 (32/64 bit)*
 - *Except for "RT" versions of Microsoft® Windows® 8.1 and Microsoft® Windows® 8.
- Microsoft® Windows® 7 (32/64 bit)
- Microsoft® Windows Vista® (32 bit)
- A USB 1.1 or 2.0 port
- A CD drive

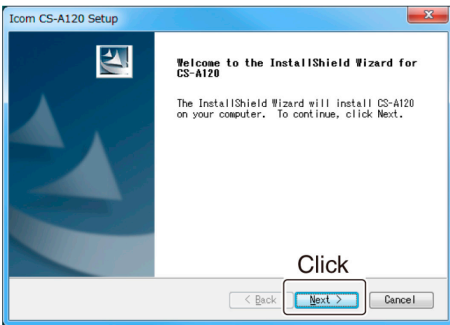
Cable (Purchase separately)

- OPC-478UC CLONING CABLE + OPC-592 CLONING CABLE ADAPTER

Software installation

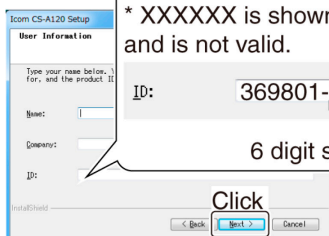
When installing the software, confirm Windows has completed its startup, and then log in as the **administrator**.

1. Confirm no other applications are running.
2. Insert the CD into a CD drive.
3. Double-click "setup.exe" on the CD.
 - If "User Account Control" is displayed, click <Yes> to continue.
4. "Welcome to the InstallShield Wizard for CS-A120" is displayed. Click <Next >>.

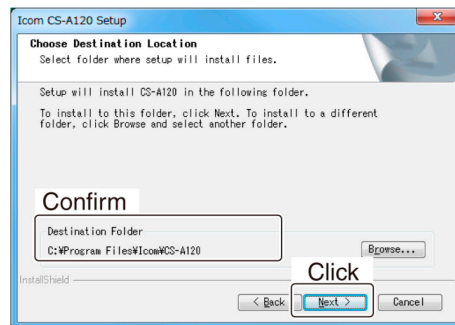


5. "User Information" is displayed. Enter your name, your company name (optional), and the product ID number as described below. Click <Next >>.
 - Product ID number: 369801-(6 digit serial number)
 - The serial number is on the CD. If you downloaded the software, enter the ID provided by your distributor.

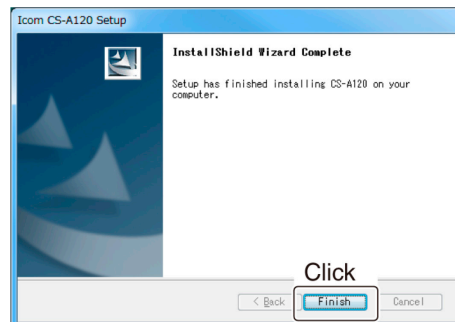
Example:
When the serial number is XXXXXX*, enter "369801-XXXXXX" as the ID number.
* XXXXXX is shown as an example only, and is not valid.



6. "Choose Destination Location" is displayed. Click <Next >>.
 - If desired, click <Browse...> to select another destination folder before clicking <Next >>.



7. After the installation has completed, "InstallShield Wizard Complete" is displayed. Click <Finish>.



8. Eject the CD.
9. A program group 'CS-A120' is created on the program menu, and a shortcut icon is created on the desktop.

NOTE: You can uninstall the cloning software from "Uninstall a program" in the Windows Control Panel.

■ Before connecting the cloning cable to a PC

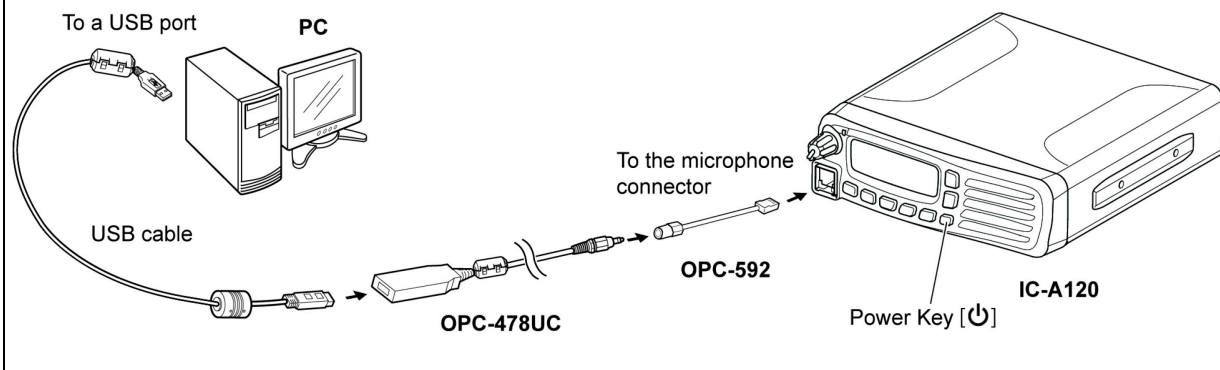
To use the OPC-478UC CLONING CABLE and the OPC-592 CLONING CABLE ADAPTER, you must first install a USB driver.

The driver and installation guide are supplied with the cloning cable.

Read the guide carefully before installing the driver.


■ Connecting the cable

1. Hold down [⏻] for 1 second to turn OFF the transceiver.
2. Connect the cable as shown below.
3. Hold down [⏻] for 1 second to turn ON the transceiver.



■ Cloning information

- To prevent data loss, read all the transceiver's data before entering or editing parameters by using the cloning software, even if the transceiver is factory fresh.

Click , or <Clone> in the top menu of the cloning software, and then select "Read ← TR" to start reading.

- While reading or writing cloning data, **NEVER** turn OFF the transceiver or the PC, and **NEVER** disconnect the cable. Otherwise, the data could be lost or corrupted.
- Before reading or entering data, make a backup file on your PC.
A backup file enables you to easily restore the setting data, if the data in the transceiver is accidentally deleted.

TIP: Refer to the cloning software's Help file for assistance with the functions or settings.
To open the Help file, click <Help> in the top menu of the cloning software and select "Contents," or simply push the [F1] key on the PC's keyboard.

Icom, Icom Inc. and Icom logo are registered trademarks of Icom Incorporated (Japan) in Japan, the United States, the United Kingdom, Germany, France, Spain, Russia, Australia, New Zealand, and/or other countries.

Microsoft, Windows, and Windows Vista are registered trademarks of Microsoft Corporation in the United States and/or other countries.

All other products or brands are registered trademarks or trademarks of their respective holders.

Icom Inc.

1-1-32 Kamiminami, Hirano-ku, Osaka 547-0003, Japan

Count on us!

A-7271W-1EX

© 2015 Icom Inc.