

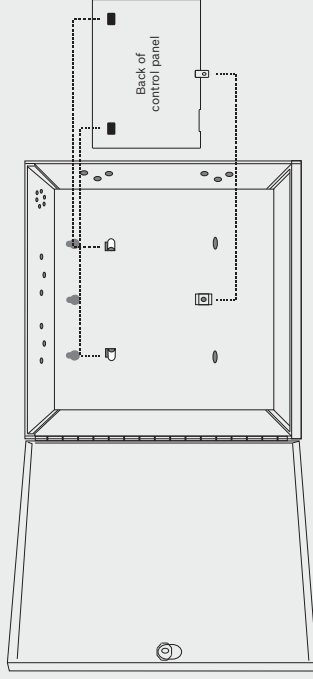
Quick Start Guide

B9512G/B8512G Control Panel



Control Panel Mounting

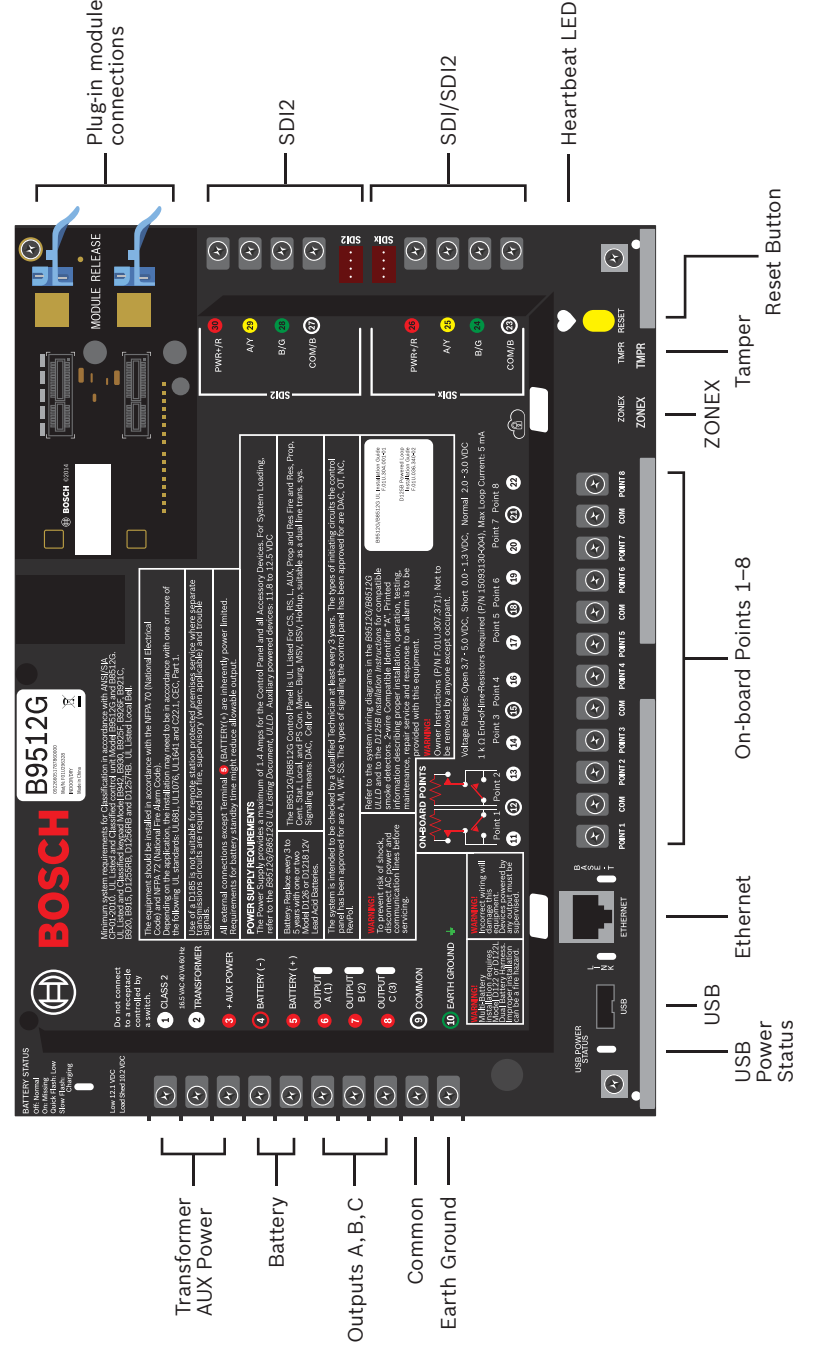
Enclosure Models B8103/D8103/D8108A/D8109



Removable Terminal Strips

Need more help?

For detailed instructions, refer to the control panels Installation and System Reference Guide (ISRG) chapter number (ISRG #5.2) included on the CD provided with the control panel.



SDI2 Specifications

Unshielded, 4 conductor, 22–12 gauge cable
 Maximum cable length 1000 ft. single run, 7500 ft. system total
 Allows a combination of home run, daisy chain and T-tapping wiring configurations

Communication Devices

Technology	Location	ISRG #	Reporting	Personal Notifications	Remote RPS Programming	Local RPS Programming	Remote Security App
Ethernet ³	On-board	7.5	●	●	●	1	●
Cellular	B44x Plug-in	8.2	●	●	●	●	●
Telephone	B430 Plug-in	7	●	○	●	○	○
USB	On-board	3.3.8	○	○	○	2	○

- 1 = PC direct, connect using AutoIP (WiFi off, wait 2 minutes)
- 2 = PC direct, connect using Male A to Male A USB (B99)
- 3 = "E" variants do not include on-board Ethernet

Optional Devices Overview

Device Type	Model	Description	ISRG #	B9512G	B8512G	Address	Notes
Keypad	B91x/B92x	2-line Basic	9.1.1	32*	16*	01-32	Similar device types must use different addresses. Different device types may use the same address. *Maximum number of total system keypads (including 16 SDI keypads.)
	B925F/B926F	2-line Fire	9.1.4-9.1.5	32*	16*	01-32	
	B930	5-line, ATM LCD	9.1.6	32*	16*	01-32	
	B942/B942W	Touch Screen	9.1.7	32*	16*	01-32	
	D1255/D1255RB	Vacuum Fluorescent Keypad (RB=Fire)	9.1.8	16	16	01-16	
	D1260x	ATM LCD Keypad	9.1.8	8	8	01-08	
I/O Expander	B208	8-input	13.1	59	9	01-59	
	B308	8-output	11.1	59	9	01-59	
	B299	POPEX	13.2	6	1	1-6	
RF Receiver	B600	ZONEX	11.2, 13.3	1	1	N/A	
	B810	Bosch RADION	14.1	1	1	1	
Door Control	B820	Inovonics	14.2	1	1	1	
	B901	Access Control Interface					
Power Supply	B520	12V DC, 2A	6.3	4	2	01-04	
	B450	B44x Plug-in Interface	8.4	1	1	1	

On-board Inputs and Outputs

Terminal	Description	Specification
1 2	Transformer	Class 2 16.5 VAC 40 VA 60Hz
9	COMMON	Negative, 12V DC Aux Power
10	Earth Ground	Cold water pipe, or similar
4 5	Battery	12 VDC up to 38 Ah
6 7 8	Programmable power outputs	12 VDC nominal
3	Aux Power	12 VDC, 1.4 A
SDI2 SDIx	SDI2 Bus	Modules and keypads, use terminal or interconnect wiring
POINT 1 POINT 8	Alarm Inputs	1K Ω EOL
TMPR	Tamper	Optional tamper switch
ZONEX	Legacy zone expansion	12 VDC nominal
RESET	Reset Button	Hold 5 seconds to enter or exit service mode
	Heartbeat	Slow = normal, Rapid = service mode
MOD-1 MOD-2	Plug-in	Communication module options

RPS Programming

Remote Programming Software (RPS)

- Windows based account management and control panel programming application
- Each control panel program is represented as an RPS database record

RPS Features

- Full control panel configuration; local and remote
- Control panel firmware updates; local and remote
- Control panel history event management and reports
- Enhanced remote panel diagnostics

RPS Ordering Information

- D5500CU:** RPS Account management and control panel programming software on CD-ROM
- D5370-USB:** USB Security Block (Dongle). Security accessory required for RPS to control panel communications
- D5500C-USB:** RPS software and required USB Security Block (Dongle) kit



USB Security Block

RPS Software Download <http://tiny.cc/boschrps>

Note: RPS version 6.00 or higher is required for connection to B9512G/B8512G control panels.

RPS Installation and Initial Login

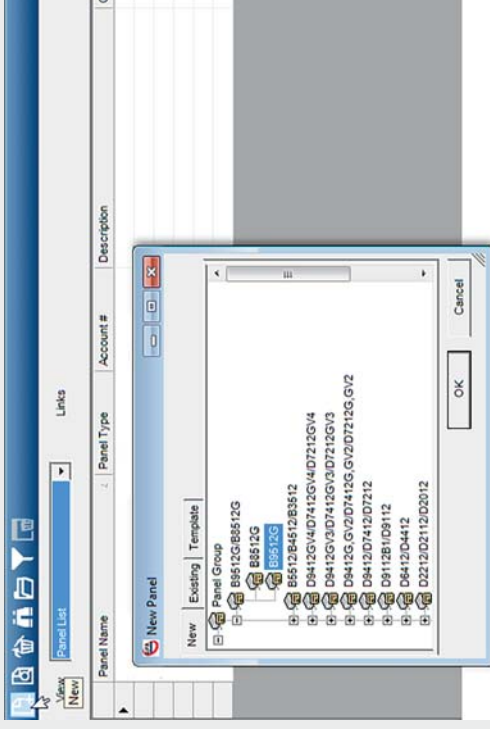
1. Install RPS on a Windows computer
2. Login to RPS using the following credentials
3. User Name: admin
4. Password: default
5. Change the password after initial login

RPS Help

Press F1 for context sensitive help from any window or programming field within the RPS application.

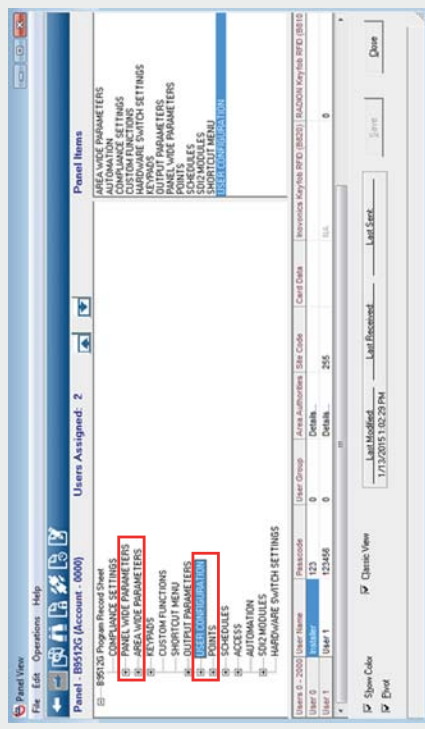
Creating Accounts

1. Panel List > New
2. Select B9512G or B8512G
3. Enter the account information in the fields



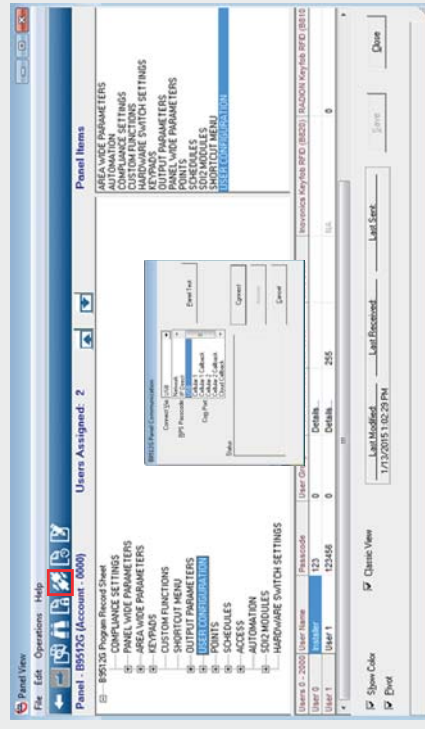
Configuring Control Panels

1. To open, double-click the account
2. Complete the required basic control panel parameters



Connecting to the Control Panel

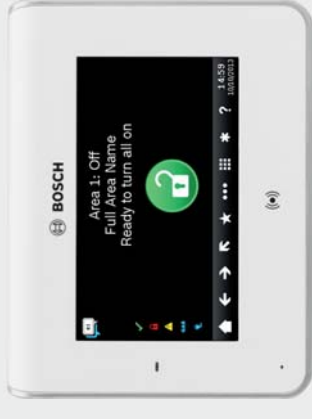
1. Plug in the Security Block
2. Click the Connect button
3. Select the connection method
4. Connect to the control panel
5. Send All programming parameters to the control panel



Keypad Programming

B942W Touch Screen Keypad features

- Color graphic touch screen display
- Built-in presence detector lights the display when user approaches



B92x Series Two-line Alphanumeric Keypad features

- Bright two-line display
- Seven dedicated function keys



B930 ATM Style Alphanumeric Keypad features

- Bright five-line display
- Four ATM style soft keys on both sides of the display



SD12 Keypad Functions

- System operation (User)
- System diagnostics (Installer)
- Basic Panel Programming (Installer)

Installer Mode

- Installer Mode provides basic programming and diagnostics at system keypads
- Installer Mode tools include:
 - Programming
 - Service Bypass
 - Wireless Versions
 - Network Cellular
- Enter Installer Mode by entering the default installer password: [1][2][3][ENTER]
- Exit Installer Mode by pressing [ESC]

Service Mode

- Service Mode differs from Installer Mode by:
 - Stopping all reporting
 - Enabling a service keypad (address 0,0)
 - Rebooting control panel when mode is exited

Entering Service Mode

- Hold the control panel's RESET button for 5 seconds (Heartbeat LED pulses rapidly)
- Press [1][2][3][ENTER]

Exiting Service Mode

Hold the control panel's RESET button for 5 seconds (Heartbeat LED stops and the control panel reboots).

Keypad Programming

Programming needed to make a system operational includes reporting and point programming.

Point Programming Process

1. Enter the Points Menu
2. Select a Point Number
3. Set the Point Source
4. Assign a Point Index

- Point Source: Identifies the source (device type) of the point being programmed.

- If the source selected is Wireless an RFID option is presented. Wireless RFID numbers are found on the wireless device being added.

- Point Index: Device (point) behavior characteristics assigned to each point in the system.

- Point indexes are provided including the following common device functions:

- 4: Smoke Detectors
- 7: Perimeter Door/Window, no Entry
- 8: Perimeter Entry/Exit Door
- 13: Interior Motion Detector

Important Notes

- Change the default ([1][2][3]) installer password
- Test system via Main Menu > Actions > Test menu
- Central Station receiver update is required when using Conetix IP and Modem4 reporting format