



AW-GEV Web Smart Series

VivoCam Web Smart Managed PoE Switch



Network Topology View · Web Smart Managed Gigabit PoE Switch

The AW-GEV Web Smart series is a VivoCam web smart managed PoE switch, combining powerful web smart managed features with graphic view functions, providing better functionality and usability. With single AW-GEV Web Smart series allows users to find all network devices and deploy a network system automatically. The AW-GEV Web Smart series also provides high performance HW and environmental flexibility for SMBs and Enterprises. In addition, embedded surveillance features Graphic Views, such as Topology View/Floor View/Map View for managing, controlling and

understanding network structure and device status, as well as Google Map integration to view system status for outdoor applications. The device status and traffic monitoring functions also help users clarify and troubleshoot any connection or device issues. The AW-GEV Web Smart series is ideal for delivering management simplicity, better user experience, and lowering total cost of ownership.

Key Features

Managing IP Surveillance

- The Root VivoCam will Auto-Sync with All Sub VivoCam Switches
- Auto Discovery and Classification of Network Devices
- Batch Camera Configuration-File Import & Export
- Batch Camera Network/Login Configuration
- Auto Generated Surveillance Topology View
- Easy Tag VLAN Configuration in Topology View
- Smart Device-Management in Topology View
- PoE On/Off Control in Topology View
- Display IP Camera Live Stream in Topology View, Floor View and Google Map View

Web Smart Managed PoE Switch

- DHCP Server & Client & Relay & Snooping
- Tag-Based VLAN, Port-Based VLAN, Protocol -Based VLAN, IP Subnet-Based VLAN, MAC-Based VLAN
- Private VLAN Edge (PVE), Voice VLAN, Q-in-Q VLAN, GARP VLAN
- Multicast VLAN Registration (MVR)
- 802.1d (STP), 802.1w (RSTP) and 802.1s (MSTP) & Loop Protection
- LACP IEEE 802.3ad and Static Link Aggregation
- IGMP Snooping v1/v2/v3 & Querier & Proxy
- IEEE 802.1X RADIUS Authentication & IGMP-RADIUS based
- SNMP v1/v2c/v3 User-Based Security Model (USM)
- IEEE802.3az Energy-Efficient Ethernet
- MAC Address Auto-Learning and Auto-Aging

Feature Highlight

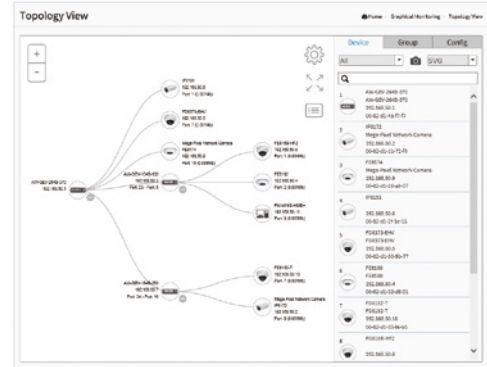
Auto Discovery

The AW-GEV Web Smart series can automatically discover VIVOTEK's devices such as network cameras, video servers and NVR's with a simple click of the mouse.

Remove	Status	Device Type	Model Name	Device Name	MAC	IP Address
<input type="checkbox"/>	Online	IP Cam	VIVOTEK-FD8166	Mega-Pixel Network Camera	00-02-01-25-2A-02	192.168.48.173
<input type="checkbox"/>	Online	IP Cam	VIVOTEK-FR220H	Mega-Pixel Network Camera	00-02-01-25-23-E7	192.168.48.220
<input type="checkbox"/>	Online	IP Cam	VIVOTEK-FR127P	Mega-Pixel Network Camera	00-02-01-25-42-CA	192.168.48.230
<input type="checkbox"/>	Online	IP Cam	VIVOTEK-FD8136	Mega-Pixel Network Camera	00-02-01-25-4A-13	192.168.48.89
<input type="checkbox"/>	Online	IP Cam	VIVOTEK-FR372	Mega-Pixel Network Camera	00-02-01-25-4D-F1	192.168.48.79
<input type="checkbox"/>	Online	IP Cam	VIVOTEK-FR373	Mega-Pixel Network Camera	00-02-01-25-5A-04	192.168.48.137
<input type="checkbox"/>	Online	IP Cam	VIVOTEK-FR331H	FR331H-C	00-02-01-25-6A-05	192.168.48.234
<input type="checkbox"/>	Online	IP Cam	VIVOTEK-FR126	Mega-Pixel Network Camera	00-02-01-26-61-98	192.168.48.233
<input type="checkbox"/>	Online	IP Cam	VIVOTEK-FR121H	Mega-Pixel Network Camera	00-02-01-26-67-05	192.168.48.24
<input type="checkbox"/>	Online	IP Cam	VIVOTEK-FR331H	Mega-Pixel Network Camera	00-02-01-26-A3-06	192.168.48.287

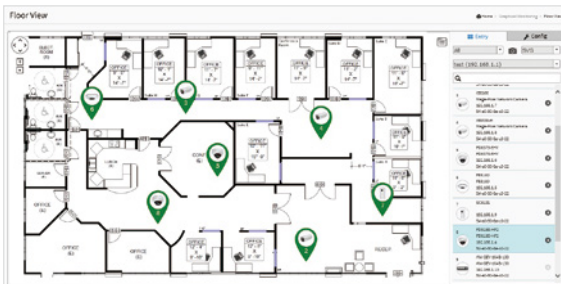
Topology View

Auto-generated Topology View allows administrators to quickly view and export a complete network topology in SVG/PNG/PDF format for easier inspection and planning.



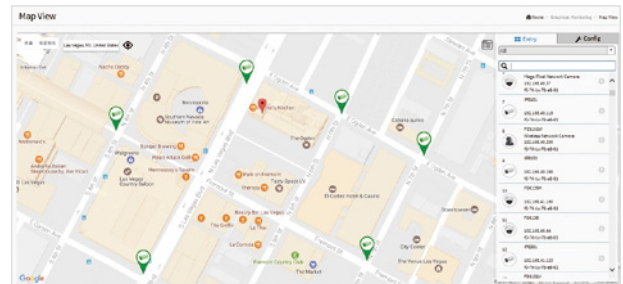
Floor View

Upload custom floor images. Floor View allows for quick locations of deployed surveillance devices and for export of this view in SVG/PNG/PDF format for easier inspection and planning.



Google Map View

Locate surveillance devices on Google map to simplify multi-site management of any large scale deployments.



Device Management

Easy network configuration, open camera Web UI, diagnose camera connection and cable status, display camera live stream, change camera network setting, restore default, PoE consumption, and PoE on/off control.

Device Management Panel for FD8373-EHV:

- Device Type: VIVOTEK IP Cameras
- Device Name: FD8373-EHV
- Model Name: FD8373-EHV
- Mac Address: 00-02-01-30-00-77
- IP Address: 192.168.19.4
- Http Port: 80
- PoE Load: 4.3 W
- Timezone: Vivosys 0125A

Management Actions: Live Stream, Management, PoE, PoE on/off, PoE consumption, Diagnose, Open Web UI, Restore Default.

Device Status

Device Status page to show the real-time verification result of each connection between switch port and surveillance device.

Select	Status	Model Name	Device Name	MAC	IP Address	Version
<input checked="" type="checkbox"/>	Online	IB8168	Mega-Pixel Network Camera	00-02-D1-2D-45-0F	192.168.1.7	0100e

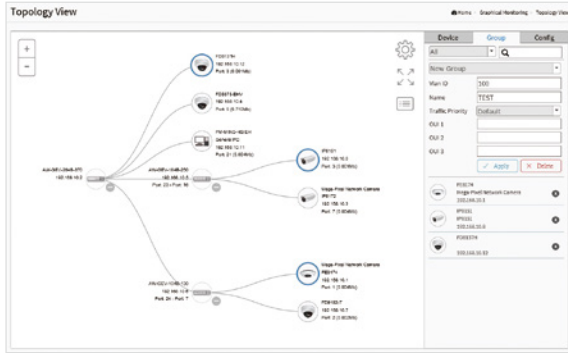
Connection Details for 192.168.1.7 (00-40-c7-1c-a2-07):

- Connection: ●
- Cable status: ●

Feature Highlight

VLAN Setting

Hierarchical topology view allows administrators to easily build a VLAN.

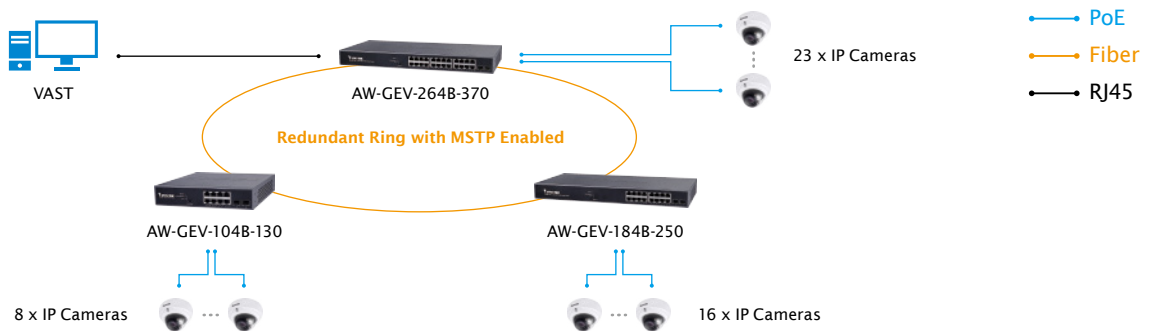
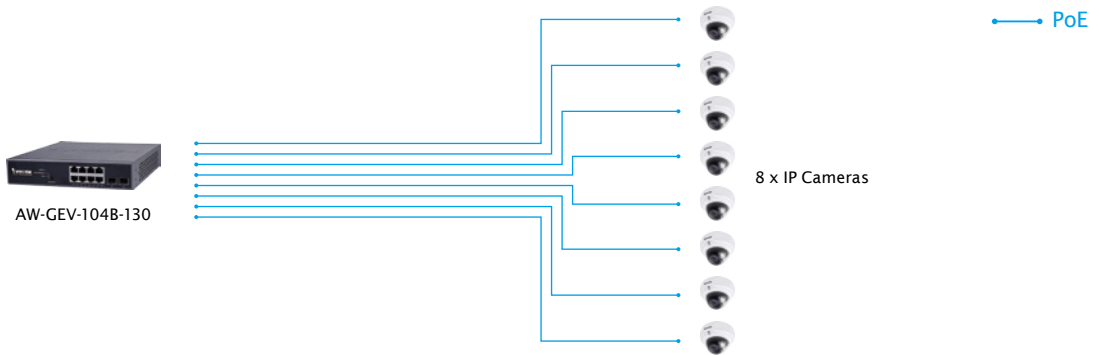


Live Streaming

Display camera live streaming in Topology View, Floor View and Google Map View.



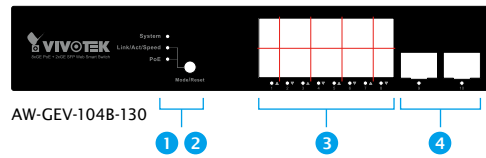
Application



Ordering Information

Model Name	Product Description
Web Smart PoE Switch	
AW-GEV-104B-130	8xGE PoE + 2xGE SFP VivoCam Web Smart Managed Switch, PoE Power Budget 130W
AW-GEV-184B-250	16xGE PoE + 2xGE SFP VivoCam Web Smart Managed Switch, PoE Power Budget 250W
AW-GEV-264B-370	24xGE PoE + 2xGE SFP VivoCam Web Smart Managed Switch, PoE Power Budget 370W
SFP Transceiver	
SFP-1000-MM85-X5	1.25G, MMF, 0.5km
SFP-1000-MM13-02	1.25G, MMF, 2km
SFP-1000-SM13-10	1.25G, SMF, 10km
SFP-1000-SM13-40	1.25G, SMF, 40km
SFP-1000-CPTX-X1	1G SFP to RJ45
IP Surveillance Device	
Network Camera	VIVOTEK Network Cameras
Video Server	VIVOTEK Video Servers
NVR	VIVOTEK NVRs
CMS	VAST

Front View



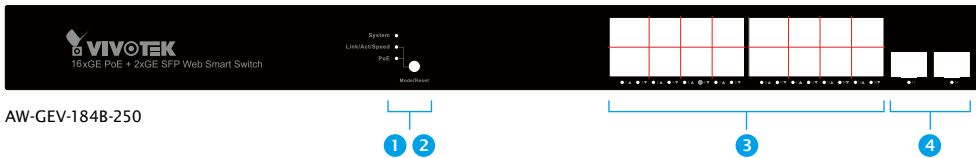
AW-GEV-104B-130

1 2

3

4

- 1 LED Indicators
- 2 Mode Selector & Reset Button
- 3 PoE RJ45 Gigabit Ethernet Port x8
- 4 Gigabit SFP Port x2



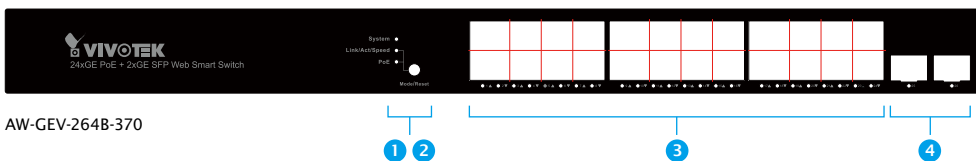
AW-GEV-184B-250

1 2

3

4

- 1 LED Indicators
- 2 Mode Selector & Reset Button
- 3 PoE RJ45 Gigabit Ethernet Port x16
- 4 Gigabit SFP Port x2



AW-GEV-264B-370

1 2

3

4

- 1 LED Indicators
- 2 Mode Selector & Reset Button
- 3 PoE RJ45 Gigabit Ethernet Port x24
- 4 Gigabit SFP Port x2

Technical Specifications

Model	AW-GEV-104B-130	AW-GEV-184B-250	AW-GEV-264B-370	
Product Description	8xGE PoE + 2xGE SFP VivoCam Web Smart Managed PoE Switch	16xGE PoE + 2xGE SFP VivoCam Web Smart Managed PoE Switch	24xGE PoE + 2xGE SFP VivoCam Web Smart Managed PoE Switch	
Port Configuration				
10M/100M/1G RJ45 Port	8	16	24	
100M/1G SFP Port	2	2	2	
Total Ports	10	18	26	
HW Performance				
Switching Bandwidth	20Gbps	36Gbps	52Gbps	
Buffer Memory	4.1Mb	4.1Mb	4.1Mb	
MAC Address	8K	8K	8K	
Jumbo Frames	10000 Bytes	10000 Bytes	10000 Bytes	
Managing IP Surveillance Functions				
Management				
Auto Search VIVOTEK Device	up to 256 pcs	up to 256 pcs	up to 256 pcs	
Surveillance Device Management List	√	√	√	
DHCP Server Function	√	√	√	
VIVOTEK Device Account/Password Setting	√	√	√	
VIVOTEK Device Static IP Setting	√	√	√	
VIVOTEK Device Grouping Setting for VLAN	√	√	√	
VIVOTEK Device Name Edit	√	√	√	
VIVOTEK Camera/Video Server Reboot/Restore Default	√	√	√	
VIVOTEK Device Re-direct Link	√	√	√	
VIVOTEK Device On/Off Line Status	√	√	√	
E-Map View				
Topology View	√	√	√	
Floor View	√	√	√	
Google Map View	√	√	√	
Maintenance				
VIVOTEK Camera/Video Server Configuration File Export/Import	√	√	√	
VIVOTEK Cameras/Video Server Configuration File Management	√	√	√	
Floor Image Management	√	√	√	
Export Surveillance Management Device List	√	√	√	
Security	√	√	√	
Trouble Shooting	√	√	√	
Traffic Monitoring	√	√	√	
Web Smart Managed Functions				
Spanning Tree	IEEE802.1D (STP)	√	√	√
	IEEE802.1w (RSTP)	√	√	√
	IEEE802.1s (MSTP)	√	√	√
Trunking	IEEE802.1d (LACP)	√	√	√
	Static Aggregation	√	√	√

Technical Specifications

Model		AW-GEV-104B-130	AW-GEV-184B-250	AW-GEV-264B-370
Product Description		8xGE PoE + 2xGE SFP VivoCam Web Smart Managed PoE Switch	16xGE PoE + 2xGE SFP VivoCam Web Smart Managed PoE Switch	24xGE PoE + 2xGE SFP VivoCam Web Smart Managed PoE Switch
VLAN	802.1Q Tag-based VLAN	4096 VLAN IDs	4096 VLAN IDs	4096 VLAN IDs
	Port-based VLAN	✓	✓	✓
	Private VLAN Edge (PVE)	✓	✓	✓
	GARP VLAN	✓	✓	✓
	Q-in-Q (Double Tag)	✓	✓	✓
	Protocol-based VLAN	✓	✓	✓
	MAC-based VLAN	✓	✓	✓
	Voice VLAN	✓	✓	✓
	IP Subnet-based VLAN	✓	✓	✓
	Multicast VLAN Registration (MVR)	✓	✓	✓
IGMP Snooping (v1/v2/v3)	✓	✓	✓	
DHCP Relay	✓	✓	✓	
MLD v1/v2 Snooping	✓	✓	✓	
QoS Functions				
Hardware Queues		8	8	8
Classification	Port Based	✓	✓	✓
	802.1p	✓	✓	✓
Rate Limiting	Ingress	✓	✓	✓
	Egress	✓	✓	✓
	Per Port	✓	✓	✓
Priority Queue Scheduling	WRR	✓	✓	✓
	DSCP & Class of Service	✓	✓	✓
Security				
IEEE802.1x	RADIUS Authentication	✓	✓	✓
	IGMP-RADIUS Based	✓	✓	✓
Secure Sockets Layer (SSL)	✓	✓	✓	
Port Security	✓	✓	✓	
IP Source Guard	✓	✓	✓	
Storm Control	✓	✓	✓	
Layer 2 Isolation Private VLAN Edge (PVE)	✓	✓	✓	
RADIUS/TACACS+	✓	✓	✓	
Loop Detection	✓	✓	✓	
DHCP Snooping	✓	✓	✓	
Management				
SNMP (v1, v2c, v3)	✓	✓	✓	
RMON (1,2,3 & 9 groups)	✓	✓	✓	
DHCP Server & Client	✓	✓	✓	
Port Mirroring	✓	✓	✓	
UPnP	✓	✓	✓	
LLDP (IEEE802.1ab)	✓	✓	✓	
LLDP-MED	✓	✓	✓	
S-Flow	✓	✓	✓	
Firmware Upgrade	✓	✓	✓	
NTP	✓	✓	✓	
PoE Management				
PoE On/Off Control	✓	✓	✓	
PoE Alive Checking for PD	✓	✓	✓	
PoE Scheduling	✓	✓	✓	

Technical Specifications

Model	AW-GEV-104B-130	AW-GEV-184B-250	AW-GEV-264B-370
Product Description	8xGE PoE + 2xGE SFP VivoCam Web Smart Managed PoE Switch	16xGE PoE + 2xGE SFP VivoCam Web Smart Managed PoE Switch	24xGE PoE + 2xGE SFP VivoCam Web Smart Managed PoE Switch
Power Delay	V	V	V
PoE Functions			
IEEE 802.3af/at PoE Standard Compliant	V	V	V
Number of PoE Output Port	8	16	24
PoE output Power	Per Port 54VDC, Max. 30W	Per Port 54VDC, Max. 30W	Per Port 54VDC, Max. 30W
Totoal PoE Power Budget	130W	250W	370W
PoE Pin Assignment	1/2(+), 3/6(-)	1/2(+), 3/6(-)	1/2(+), 3/6(-)
Environmental Specifications			
Operating Temperature	0°C ~ 50°C (32°F ~ 122°F)	0°C ~ 50°C (32°F ~ 122°F)	0°C ~ 50°C (32°F ~ 122°F)
Storage Temperature	-20°C ~ 70°C (-4°F ~ 158°F)	-20°C ~ 70°C (-4°F ~ 158°F)	-20°C ~ 70°C (-4°F ~ 158°F)
Operating Humidity	10 ~ 90% RH	10 ~ 90% RH	10 ~ 90% RH
Mechanical Specifications			
Dimensions	220 (W) x 44 (H) x 242 (D) mm	442 (W) x 44 (H) x 211(D) mm	442 (W) x 44 (H) x 211(D) mm
Weight	1.95 kg	3 kg	3.1 kg
Power Source			
AC Input	100V ~ 240V	100V ~ 240V	100V ~ 240V
Frequency	50 ~ 60 Hz	50 ~ 60 Hz	50 ~ 60 Hz
Power Consumption	150W	280W	430W
General			
Warranty	24 months	24 months	24 months
Certifications			
Certifications	CE, FCC, LVD, VCCI, C-Tick	CE, FCC, LVD, VCCI, C-Tick	CE, FCC, LVD, VCCI, C-Tick
Accessories			
Included Accessories	Power Cord, QIG, CD Manual, Rack Mount Kit	Power Cord, QIG, CD Manual, Rack Mount Kit	Power Cord, QIG, CD Manual, Rack Mount Kit
Dimensions			

