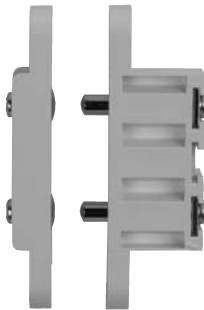


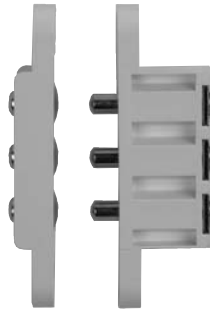


In or Out...we make it Easy!®

USED TO POWER ELECTRIC LOCKS MOUNTED IN THE DOOR.



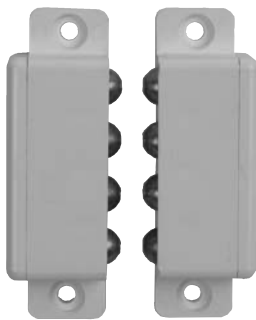
9500
2-Pin Transfer
1/2" x 2-3/4"
(13.0 x 71.0mm)



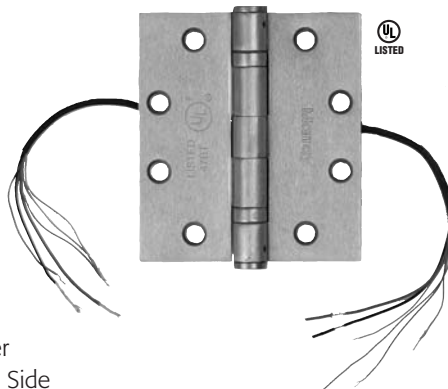
9501
3-Pin Transfer
1/2" x 2-3/4"
(13.0 x 71.0mm)



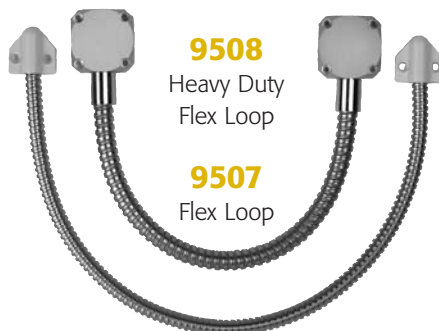
9503
4-Ball Transfer
13/16" x 3-3/8"
(20.0 x 86.0mm)



9505
Surface Mount 4-Ball Transfer
15/16"W x 3"H x 19/32"D Each Side
(24.0 x 75.5 x 15.0mm)



**9520/9521/
9522/9523/9524**
Electrified Hinges
4" x 4" (101.6 x 101.6mm)
4.5" x 4" (114.3 x 101.6mm)
4.5" x 4.5" (114.3 x 114.3mm)
5" x 4.5" (127.0 x 114.3mm)
5" x 5" (127.0 x 127.0mm)



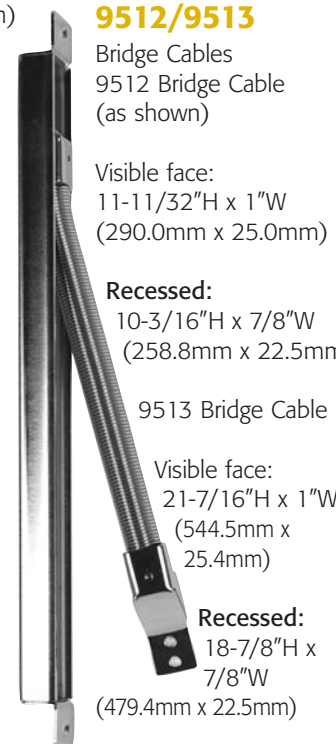
9508
Heavy Duty
Flex Loop

9507
Flex Loop

7", 12", 18", 24", 36"
(177.8mm, 304.8mm, 457.2mm,
609.6mm, 914.4mm)

Current Transfers Features & Benefits

- Pin-style transfers are recessed in the hinge side of the door/frame and concealed when the door is closed for tamper-resistance.
- Ball-style transfers are recessed or surface-mounted on the hinge side, lock side or frame header. Recessed models are concealed when the door is closed for tamper-resistance.
- Flex loops are surface-mounted on hinge side of the door/frame.
- Electrified hinges are fully mortised in the hinge style and concealed when the door is closed for tamper-resistance.
- Bridge cables are recessed in the hinge side of the door/frame and concealed when door is closed for tamper-resistance.



9512/9513
Bridge Cables
9512 Bridge Cable
(as shown)

Visible face:
11-11/32"H x 1"W
(290.0mm x 25.0mm)

Recessed:
10-3/16"H x 7/8"W
(258.8mm x 22.5mm)

9513 Bridge Cable

Visible face:
21-7/16"H x 1"W
(544.5mm x
25.4mm)

Recessed:
18-7/8"H x
7/8"W
(479.4mm x 22.5mm)

Specifications

9500

Series



In or Out...we make it Easy!®

Model	Mounting	Door Status	Type	Ratings	Material	Finish
9500	Mortise	No – 2-pin contact	Pin	1.5A/24VAC	Nickel-plated Brass on Plastic	White
9501	Mortise	Yes – 3-pin contact	Pin	1.5A/24VAC	Nickel-plated Brass on Plastic	White
9503	Mortise	Yes – 4-ball contact	Ball	0.5A/24VAC	Gold-plated on Plastic	White
9505	Surface	Yes – 4-ball contact	Ball	0.5A/24VAC	Gold-plated on Plastic	White
9507	Surface	No	Flex Loop	4 cond. @ 22ga. or 2 cond. @ 18ga.	Stainless Steel Coated Brass	Silver White/Brown
9508	Surface	No	Flex Loop	16 cond. @ 22ga. or 8 cond. @ 18ga.	Stainless Steel	Silver
9512/9513	Mortise	No	Bridge Cable	4 cond. @ 22ga. 2 cond. @ 18ga.	Steel	Bright Chrome
9520/9521/9522/ 9523/9524	Mortise	No	5-knucke Ball Bearing TEF (2 + 4 Wire)	2 cond.@20 ga./3A@24VAC/DC 4cond@30ga/.1A@24VAC/DC	Steel	Brushed Chrome

NOTE: It is recommended that preparation for wires, etc., for all surface-mounted models be done on-site. Conduits supplied by others. Specifications are subject to change without notice.

