



Catalog # 907C

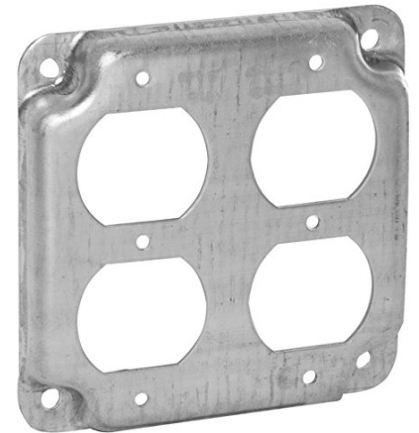
4 IN. SQUARE EXPOSED WORK COVER

2 DUPLEX RECEPTACLES

Ideal for exposed work environments to support a variety of electrical devices. Our exposed work covers are made from heavy duty, 16-gauge, galvanized steel and come in 22 configurations to fit your needs.

FEATURES

- Exposed work covers include required hardware
- Exposed work covers meet the requirements of the 2020 NEC Article 250.146 (A). No bonding jumper is required for covers with: (1) Crushed corners (2) Two or more device attachment fasteners that are permanent with thread-locking, screws, or nut-locking means (3) Insulating retaining washer removed for at least one device attachment screw
- Cover is packed with printed catalog number, compliances and QR code for installation instructions



APPLICATIONS

Surface covers are used to support switches or receptacles in areas where the box is surface mounted or positioned in exposed work applications.

CERTIFICATIONS



SPECIFICATIONS

UPC NUMBER:	050169999974
PRODUCT LENGTH/DEPTH (IN.):	0.56
PRODUCT WIDTH (IN.):	5.75
PRODUCT HEIGHT (IN.):	6.00
WT. PRODUCT. (LBS.):	0.342
PACKAGE TYPE:	LOOSE
PRODUCT UPC-A LABELED:	YES

PACKAGING

I2OF5:	50050169999979
STANDARD CARTON QTY:	10
MIN ORDER QTY:	10

