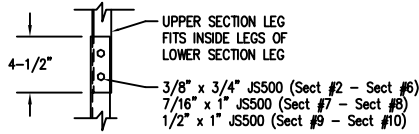
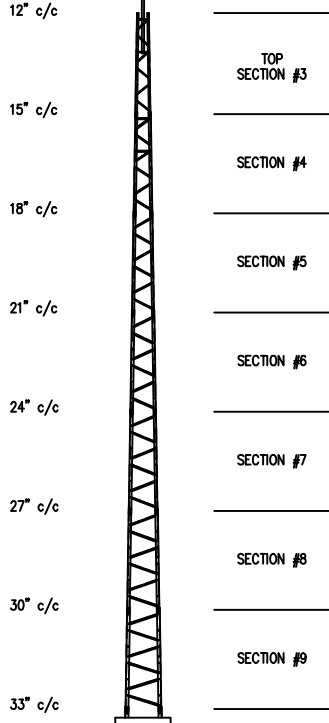
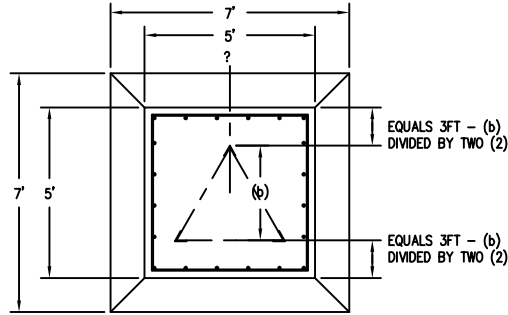


**56' T300 TITAN TOWER**  
(P/N 4.95.0306.000)

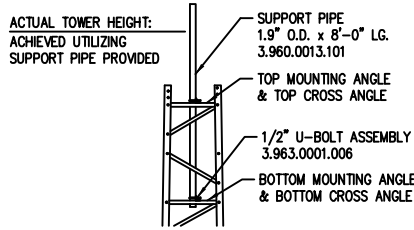
**SECTION SPLICE**



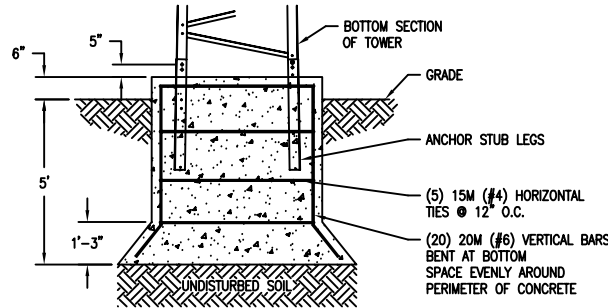
**FOUNDATION DESIGN (NORMAL DRY SOIL)**



**TOP ELEVATION**



MAXIMUM ALLOWABLE ANTENNA AREA		
SURVIVAL DESIGN NO ICE (ROUND/FLAT)		
70mph WIND	85mph WIND	100mph WIND
25/17 (sqft)	9/6 (sqft)	--/--



- 1) PRE-ASSEMBLED PART NUMBER 4.95.0306.000.
- 2) MAX. ANTENNA LOADS ARE CENTRALLY LOCATED AND BALANCED, 3FT OR LESS ABOVE THE TOWER TOP.
- 3) "SURVIVAL" DESIGN IN NOT THE SAME AS EIA-222. FOR EIA COMPLIANCE SEE OUR SUPERTITAN MODELS.
- 4) MINIMUM 32ksi YIELD FOR ALL COMPONENTS.
- 5) CONSTRUCTED FROM PASSIVATED G-90 COAT GALVANIZED STEEL SHEET.
- 6) TOWERS COME ASSEMBLED IN 8FT SECTIONS.
- 7) TOP SUPPORT PIPE IS INCLUDED.
- 8) FOR OPTIONAL ROCK BOLT FOUNDATION SEE DWG 000001.610.0033 AND 000001.610.0021.

**FOUNDATION LOADS:**  
MAX. OVERTURNING MOMENT (K\*FT) = 67.00  
MAX. SHEAR (kips) = 1.7  
DESIGN UPLIFT PER INDIVIDUAL LEG (kips) = 23.0

**CONCRETE VOLUME:**  
6.0 CUBIC YARDS

REV.	BY:	BY:	DESCRIPTION	DATE
	REV.	CHK.		

REFERENCE DRAWINGS:	
DRAWING NUMBER	DRAWING NUMBER

CONFIDENTIAL: ALL INTELLECTUAL PROPERTY RIGHTS HEREIN ARE THE PROPERTY OF TRYLON INC. ALL DUPLICATION, RECORDING, DISCLOSURE OR USE IS PROHIBITED WITHOUT WRITTEN CONSENT OF TRYLON INC. CUSTOMERS:

**Trylon**

DRAWING NO. 00001.610.0087

SITE: SCALE: 90,000

DATE: 07 MAR 07 BY: MRH CHK: CR APP: JB

TITLE: 56' T300 TITAN TOWER