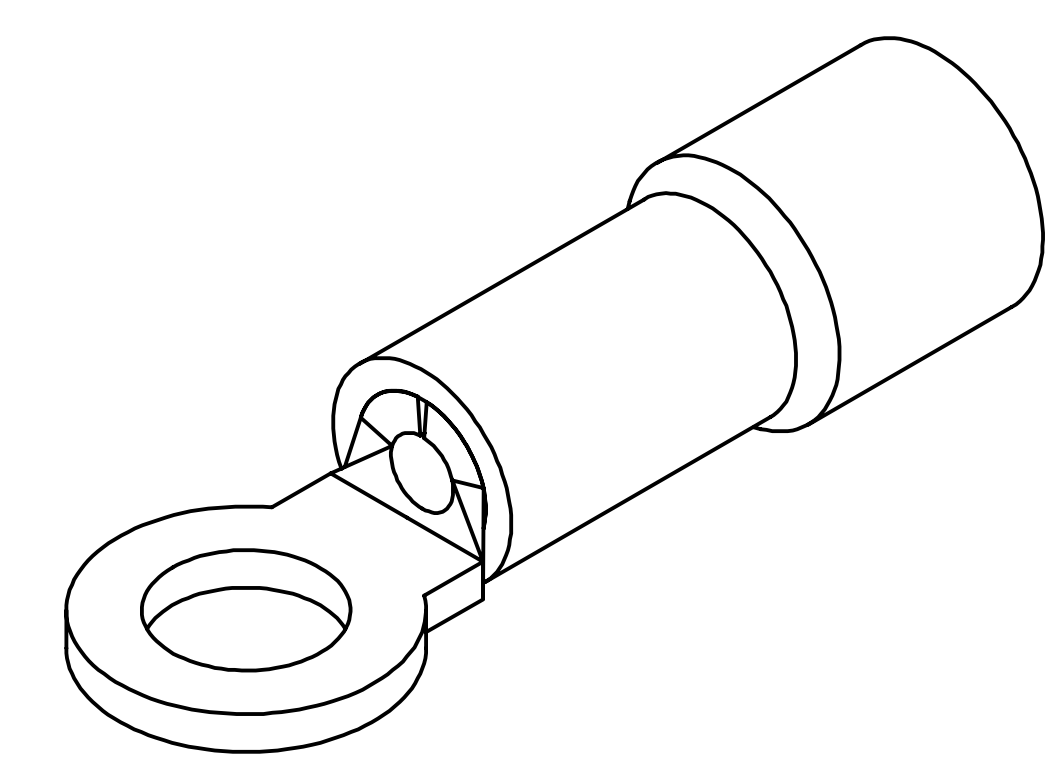
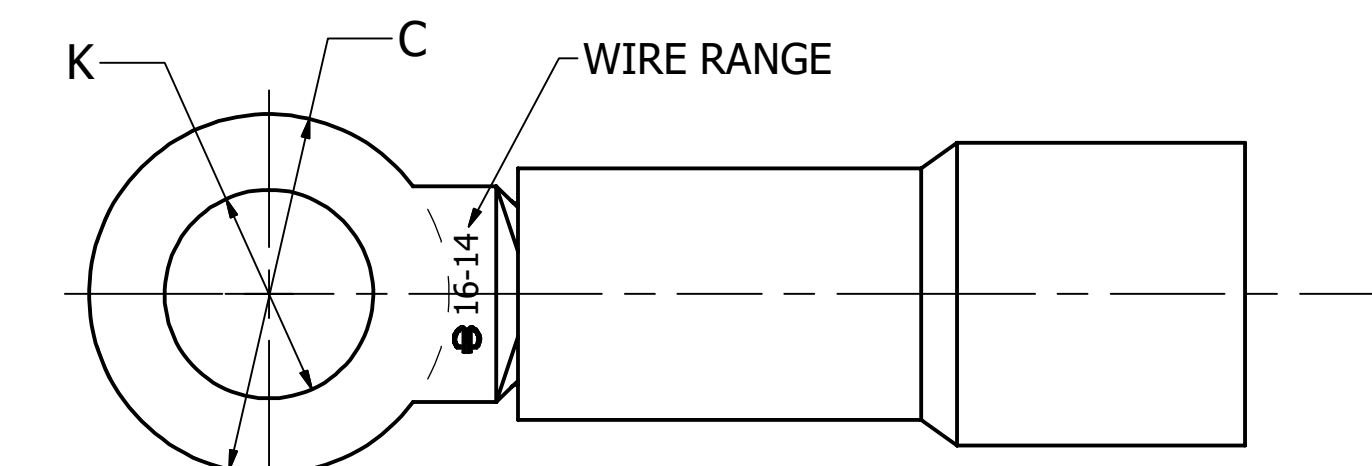
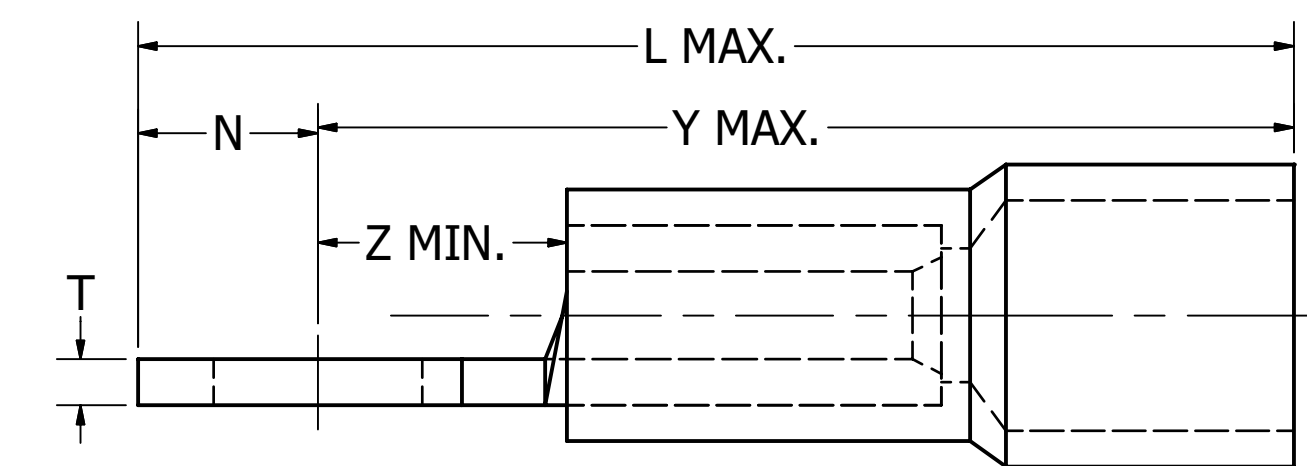


AWG WIRE SIZE (METRIC SIZE)	STUD SIZE	CATALOG NUMBER	BULK CATALOG NUMBER	TAPE MOUNTED CATALOG NUMBER 2000/REEL	C		K		L MAX.	N		T ± .01 [± 0.25]	Y MAX.	Z MIN.	MAX. WIRE INSUL. DIA. ACCOM.	WIRE STRIP LENGTH ± .03 [± .8]	COLOR CODE	INSTALLATION TOOLING (ONE CRIMP)	REV	DATE	DESCRIPTION	ECO	BY	C'H'K.
					MAX.	MIN.	MAX.	MIN.		MAX.	MIN.								D	07/27/2020	METRIC WIRE SIZE ADDED IN TABLE	53947	SS	YR
22-16 Str. and Sol. (0.34 mm <sup>2</sup> - 1.00 mm <sup>2</sup> )	2	TP162	BA16E2	-	.23 [5.7]	.21 [5.3]	.10 [2.5]	.09 [2.3]	.71 [18.0]	.11 [2.9]	.10 [2.6]	.03 [8.8]	.61 [15.5]	.17 [4.3]	.14 [3.7]	RED	Y6NCB [J1022NC4], MRE1022NV, MR15  (Wire range is No. 22- 18 stranded or solid when crimped with the MR15.)							
	4	TP164	BA16E4	BA16E4M			.12 [3.0]	.11 [2.8]																
	6	TP166	BA16E6	BA16E6M	.26 [6.6]	.24 [6.2]	.15 [3.8]	.14 [3.6]	.74 [18.8]	.13 [3.3]	.12 [3.0]													
	8	TP168	BA16E8	BA16E8M	.32 [8.1]	.30 [7.7]	.18 [4.5]	.16 [4.1]	.85 [21.6]	.16 [4.1]	.15 [3.8]													
	10	TP1610	BA16E10	BA16E10M			.23 [5.8]	.19 [4.8]																
	1/4"	TP1614	BA16E14	BA16E14M	.41 [10.4]	.39 [10.0]	.28 [7.1]	.26 [6.6]	.99 [25.2]	.20 [5.2]	.20 [5.0]													
	5/16"	TP16516*	BA16E516	-	.54 [13.7]	.52 [13.3]	.34 [8.6]	.32 [8.1]	1.15 [29.2]	.27 [6.9]	.26 [6.6]													
	3/8"	TP1638	BA16E38	BA16E38M			.40 [10.2]	.38 [9.7]																
1/2"	TP1612	BA16E12	-	.72 [18.3]	.71 [18.0]	.53 [13.5]	.52 [13.2]	1.39 [35.3]	.36 [9.1]	.35 [8.9]	1.03 [26.2]	.61 [15.5]	1/4" [6.4]											
16-14 Str. and Sol. (1.50 mm <sup>2</sup> )	2	TP142	BA14E2	-	.23 [5.7]	.21 [5.3]	.10 [2.5]	.09 [2.3]	.71 [18.0]	.11 [2.9]	.10 [2.6]	.04 [1.0]	.61 [15.5]	.17 [4.3]	.18 [4.6]	BLUE	Y6NCB [J1022NC4], MRE1022NV, MR15							
	4	TP144	BA14E4	BA14E4M			.12 [3.0]	.11 [2.8]																
	6	TP146	BA14E6	BA14E6M	.26 [6.6]	.24 [6.2]	.15 [3.8]	.14 [3.6]	.74 [18.8]	.13 [3.3]	.12 [3.0]													
	8	TP148	BA14E8	BA14E8M	.32 [8.1]	.30 [7.7]	.18 [4.5]	.16 [4.1]	.85 [21.6]	.16 [4.1]	.15 [3.8]													
	10	TP1410	BA14E10	BA14E10M			.23 [5.8]	.19 [4.8]																
	1/4"	TP1414	BA14E14	BA14E14M	.41 [10.4]	.39 [10.0]	.28 [7.1]	.26 [6.6]	.99 [25.2]	.20 [5.2]	.20 [5.0]													
	5/16"	TP14516	BA14E516	BA14E516M	.54 [13.7]	.52 [13.3]	.34 [8.6]	.32 [8.1]	1.15 [29.2]	.27 [6.9]	.26 [6.6]													
	3/8"	TP1438	BA14E38	-			.40 [10.2]	.38 [9.7]																
12-10 Str. (4.00 mm <sup>2</sup> )	4	TP104	BA10E4	-	.32 [8.1]	.30 [7.7]	.12 [3.0]	.11 [2.8]	.91 [23.1]	.16 [4.1]	.15 [3.8]	.04 [1.0]	.75 [19.0]	.20 [5.1]	.26 [6.6]	11/32" [8.7]	YELLOW	Y6NCB [J1022NC4], MRE1022NV, MR15						
	6	TP106	BA10E6	BA10E6M			.15 [3.8]	.14 [3.6]																
	8	TP108	BA10E8	BA10E8M	.37 [9.3]	.35 [8.9]	.18 [4.5]	.16 [4.1]	1.00 [25.4]	.18 [4.7]	.17 [4.4]													
	10	TP1010	BA10E10	BA10E10M			.23 [5.8]	.19 [4.8]																
	1/4"	TP1014	BA10E14	BA10E14M	.54 [13.7]	.52 [13.3]	.28 [7.1]	.26 [6.6]	1.22 [31.0]	.27 [6.9]	.26 [6.6]													
	5/16"	TP10516	BA10E516	-			.34 [8.6]	.32 [8.1]																
	3/8"	TP1038	BA10E38	BA10E38M			.40 [10.2]	.38 [9.7]											1.27 [32.3]					
	1/2"	TP1012*	-	-			.73 [18.4]	.71 [18.0]											.54 [13.7]	.51 [13.0]	1.52 [38.6]	.36 [9.2]	.35 [9.0]	1.15 [29.2]



- NOTES:
1. TERMINAL: TIN PLATED COPPER.
  2. INSULATION: POLYVINYLCHLORIDE.
  3. DIMENSIONS IN BRACKETS [ ] ARE IN MILLIMETERS AND ARE FOR REFERENCE ONLY.
  4. DIE SETS ARE LISTED IN BRACKETS [ ] AFTER THEIR RESPECTIVE TOOLS.
  5. FOR CONNECTORS MOUNTED ON MYLAR USE INSTALLATION TOOL OEM175TFM:
    - USE DIE SET TFM2218NV FOR WIRE SIZE 22-18
    - USE DIE SET TFM1614NV FOR WIRE SIZE 16-14
    - USE DIE SET TFM1210NV FOR WIRE SIZE 12-10.
  6. REFERENCE DRAWING 50105265 FOR MORE INFORMATION ABOUT TAPE MOUNTED TERMINALS.
  7. UL LISTED & CSA CERTIFIED WIRE CONNECTORS PER UL486A/B (FILE E9498) & CSA 22.2 NO.65 REQUIREMENTS (FILE 42862).
  8. DISCONTINUED TOOLS: Y6NCP, Y10MRS, Y10MRPA, PATMD1022LI, MR889, MR891, Y1022HYTOOL, INSY10D CONTACT TECH SERVICE FOR INFORMATION ABOUT APPROVED APPLICATIONS (1-800-451-4956).
  9. WIRE CONNECTOR:
    - 600V MAXIMUM
    - BUILDING WIRE: 1000V MAXIMUM, SIGNS OR LUMINARIES
    - TEMPERATURE RATING OF INSULATING MATERIAL 105°C
    - FLAME RATING: UL94 V-0.
  10. ITEMS WITH CATALOG NUMBERS FOLLOWED BY ASTERISKS (\*) ARE NOT UL LISTED OR CSA CERTIFIED.



TO ORDER BURNDY® PRODUCTS CALL		INSULATED BRAZED TERMINAL	
UNITED STATES 1-800-346-4175 (LONDONDERRY, NH)		ITEM NO: SEE TABLE	
CANADA: 1-800-361-6975 (QUEBEC)		CAT. NO: TYPE TP & BA	
1-800-387-6487 (ALL OTHER PROVINCES)		DRAWN BY: RBABU 7/31/2018	
FOR PRODUCT INFO: <a href="http://www.burndy.com">http://www.burndy.com</a>		CHECKER: V.SAKTHIVEL 7/31/2018	
		DSN APRVL: K.CASTONGUAY 10/15/2018	
		MFG APRVL: --	
		QA APRVL: B.POST 9/7/2018	
		MKT APRVL: M.BAILLY 9/6/2018	
		PROD FAM: --	
		PROJECT #: --	
		SIZE	
		D	
		DRAWING NO	
		50093722	
		SHEET 1 OF 1	
		REV	
		D	