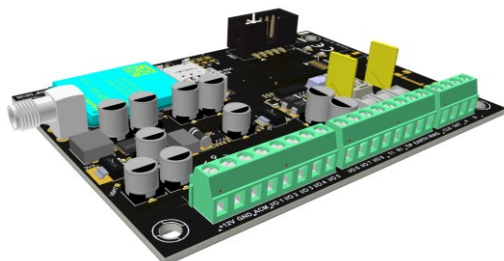


# LX30B-Q30T

DATA SHEET of

2G/4G Communicator LX30B with Smart Connector feature



EBS Sp. z o.o.  
59 Bronislawa Czecha St.  
04-555 Warsaw, POLAND  
E-mail: [dws@ebssmart.com](mailto:dws@ebssmart.com)  
Technical suport: [suport@ebssmart.com](mailto:suport@ebssmart.com)  
Webpage: [www.ebssmart.com](http://www.ebssmart.com)

Product name		2G/4G Communicator LX30B with Smart Connector feature	
Model		LX30B-Q30T	
Power supply parameters		Voltage supply	13,8V <sub>DC</sub> (acceptable: 12-14V <sub>DC</sub> )
		Power consumption	100mA/125mA (average/max) @13,8V <sub>DC</sub>
Modem		Variant	Quectel EG915U-EU
		Manufacturer	Quectel Wireless Solutions Co., Ltd. Building 5, Shanghai Business Park Phase III (Area B), No.1016 Tianlin Road, Minhang District, Shanghai 200233, China
Frequencies range	Uplink MS > BTS	LTE-FDD (Band 1)	1920 – 1980 MHz
		LTE-FDD (Band 3)	1710 – 1785 MHz
		LTE-FDD (Band 5)	824 – 849 MHz
		LTE-FDD (Band 7)	2500 – 2570 MHz
		LTE-FDD (Band 8)	880 – 915 MHz
		LTE-FDD (Band 20)	832 – 862 MHz
		LTE-FDD (Band 28)	703 – 748 MHz
		GSM850	824 – 849 MHz
		EGSM900	880 – 915 MHz
		DCS1800	1710 – 1785 MHz
		PCS1900	1850 – 1910 MHz
	Downlink BTS > MS	LTE-FDD (Band 1)	2110 – 2170 MHz
		LTE-FDD (Band 3)	1805 – 1880 MHz
		LTE-FDD (Band 5)	869 – 894 MHz
		LTE-FDD (Band 7)	2620 – 2690 MHz
		LTE-FDD (Band 8)	925 – 960 MHz
		LTE-FDD (Band 20)	791 – 821 MHz
		LTE-FDD (Band 28)	758 – 803 MHz
		GSM850	869 – 894 MHz
		EGSM900	925 – 960 MHz
		DCS1800	1805 – 1880 MHz
		PCS1900	1930 – 1990 MHz
RF Output Power @50Ω		LTE-FDD B1/B3/B5/B7/B8/B20/B28	Class 3 (23dBm ±2dB)
		GSM850	Class 4 (33dBm ±2dB)
		EGSM900	Class 4 (33dBm ±2dB)
		DCS1800	Class 1 (30dBm ±2dB)
		PCS1900	Class 1 (30dBm ±2dB)
Receiver Input Sensitivity (typical)		LTE-FDD (Band 1)	-97.0dBm
		LTE-FDD (Band 3)	-98.3dBm
		LTE-FDD (Band 5)	-97.4dBm
		LTE-FDD (Band 7)	-96.1dBm
		LTE-FDD (Band 8)	-97.0dBm
		LTE-FDD (Band 20)	-98.3dBm
		LTE-FDD (Band 28)	-98.6dBm
		GSM850	-108.0dBm
		EGSM900	-106.5dBm
		DCS1800	-107.5dBm
		PCS1900	-107.0dBm

Card supported	Nano SIM	
Transmission channels	GPRS, LTE-FDD, SMS, PSTN* *transparent, PSTN dialer required in the alarm control panel	
Transmission security	AES encryption (GPRS, LTE-FDD, SMS)	
Simulated PSTN line	YES	
Protocols supported on the phone input	SIA, ContactID	
List of compatible control panels supported by Smart Connector function (keybus connection)	DSC	PC1404, PC585, PC1565, PC5010, PC5020, PC1616, PC1832, PC1864
	Paradox	MG5000, MG5050, MG5050E, SP4000, SP5500, SP6000, SP7000, SP65, EVO48, EVO192, EVOHD
	Honeywell	VISTA-15P, VISTA-20P, VISTA-21P, VISTA-48
Inputs / Outputs	8 configurable	
AC power detection input	Maximum voltage 25VAC	
Output functions (ways of control)	<ul style="list-style-type: none"> <li>- loss of cellular signal</li> <li>- cellular signal jamming</li> <li>- full control via server or through SMS</li> <li>- reaction on inputs</li> </ul>	
Serial interface for connecting the alarm control panel	RS232 / RS485 (lines: CLK, DAT, A, B) transmission speed up to 115200bps	
Quantity of system events stored in history	5000	
Status LEDs (functions)	4 LEDs (cellular signal level, device status, DTMF communication)	
Configuration	Remote: GPRS, LTE, SMS	
	Local: from PC (required SP-PROG or MINI-PROG-BT)	
Remote firmware update	YES	
Temperature range of working	-10°C ... +55°C	
Humidity range of working	5% ... 93% (without condensation)	
Dimensions of the PCB	102mm x 73mm	