

# NVMS2.0 Management Server






## Quick Start Guide



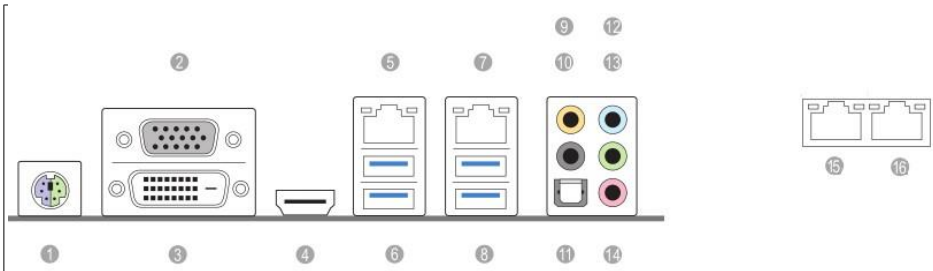
# 1 Introduction

## 1.1 Interfaces and Indicators

The icons below are for reference only. Please refer to the interfaces and indicators of the real server.

Icon	Description	Icon	Description
	Power Key		System disk running indicator; flashing light indicators the disk works normally.
//	Reset		Power indicator
	USB interface		Network connection indicator. Green light indicators the network connection is normal.

## 1.2 Rear Panel Instructions

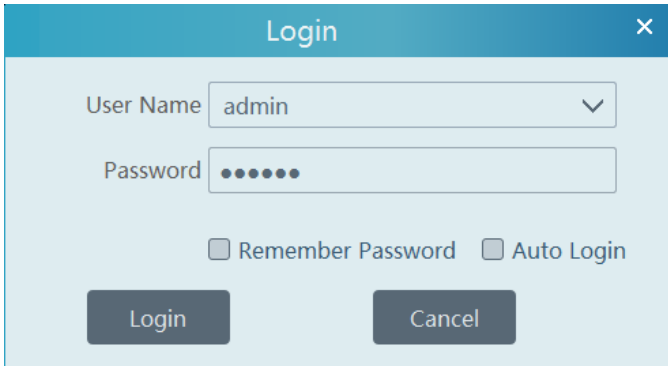


No.	Description	No.	Description
1	Mouse or keyboard port	9	Central bass (orange)
2	VGA port	10	Rear speaker (black)
3	DVI port	11	Optical SPIDF out port
4	HDMI port	12	Audio input (light blue)
5	LAN RJ-45 port (LAN1)	13	Front speaker (Lime)
6	USB3.0 ports (1~2)	14	Microphone (Pink)
7	LAN RJ-45 port (LAN2)	15	LAN RJ-45 port (LAN3)
8	USB3.0 ports (3~4)	16	LAN RJ-45 port (LAN4)

## 2 Login

### 2.1 Login

Before starting, please make sure network cable, monitor and power are connected. After the server is started, the following window will appear as shown below.



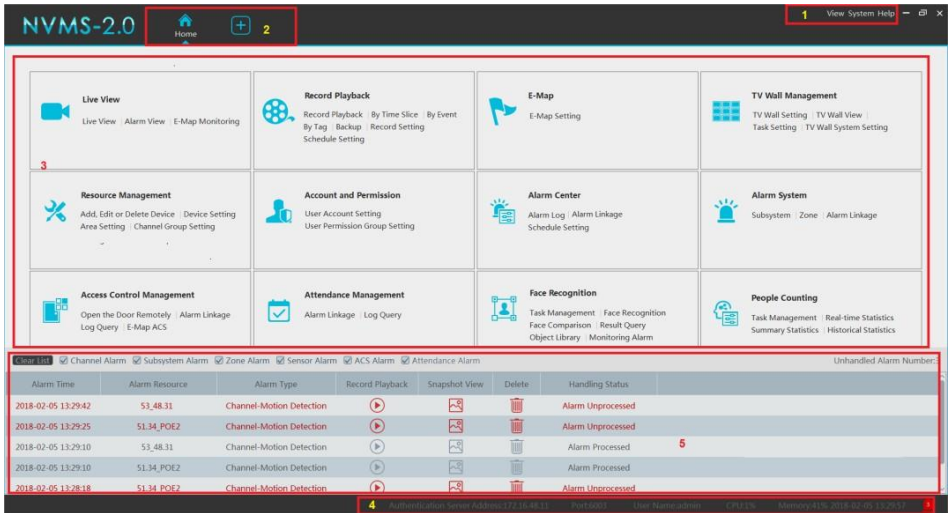
The screenshot shows a 'Login' dialog box with a blue header and a close button (X) in the top right corner. The dialog contains the following elements:

- User Name:** A text input field containing 'admin' and a dropdown arrow on the right.
- Password:** A text input field with six black dots representing a masked password.
- Remember Password:** A checkbox that is currently unchecked.
- Auto Login:** A checkbox that is currently unchecked.
- Login:** A dark grey button with white text.
- Cancel:** A dark grey button with white text.

- ① Enter username and password (the default username is admin; the default password is 123456).
- ② Check “Remember Password” or “Auto Login” as needed.
- ③ Click [Login].

If you forget the password, please click “Forgotten password”. Then a small window will appear. You can get the IP address of the authentication server, the config server port and the encrypted password in this interface. After that, send the information to the technical supporter to obtain the original password.

### 2.2 Main Menu Interface Introduction



There are five parts in the main menu interface.

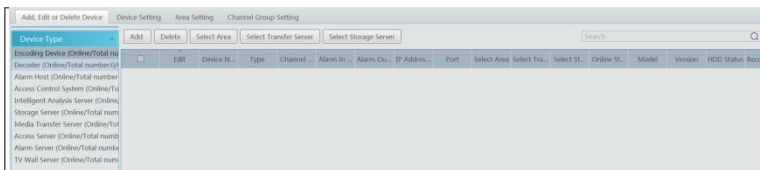
Menu Bar

No.	Description	No.	Description
1	Menu Bar	4	Status Bar
2	Tab Bar	5	Alarm Information Bar
3	Functional Areas		

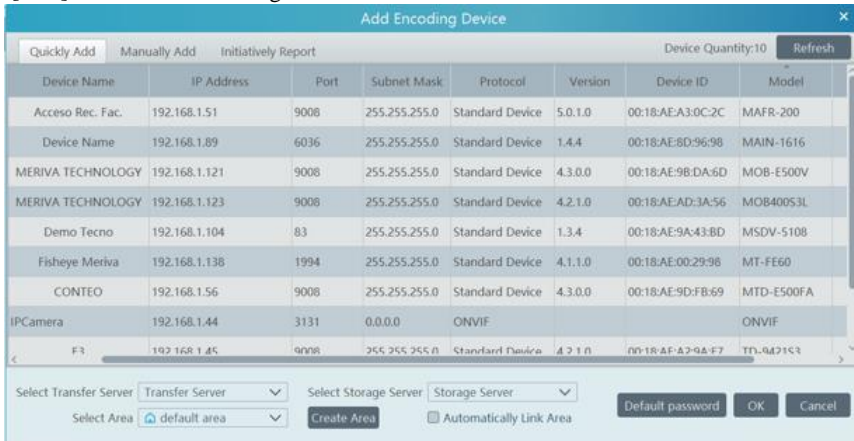
## 3 Device Management

### 3.1 Add Encoding Device

In the main menu interface, click “Add, Edit or Delete Device” to go to the following interface as shown below.



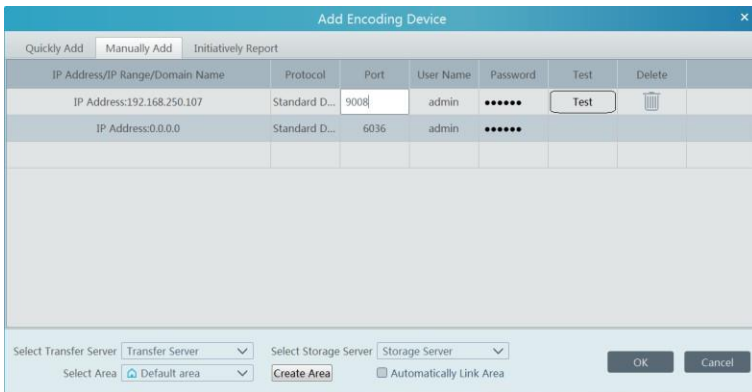
Click [Add] to enter the following interface.



### 3.1.1 Quickly Add

Click [Refresh] to quickly search devices in the same local network as shown below. Check the device and allocate the transfer server, storage server, area for it. After that, click [OK]. Area must be set up before adding devices. Click [Add Area] to create an area (See [3.2 Area Setting](#)).

### 3.1.2 Manually Add



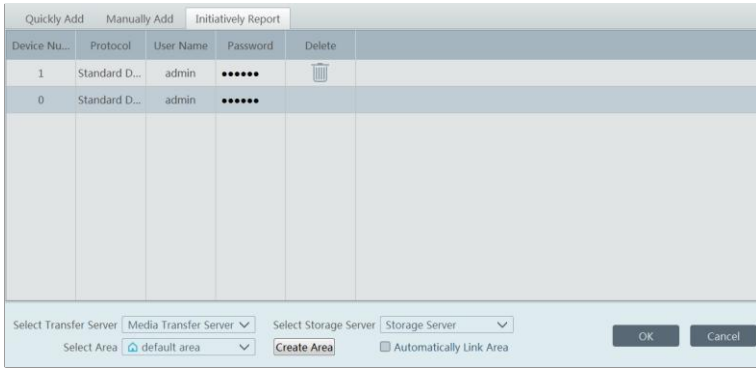
- ① Enter IP address/IP range/domain name, username and password and choose protocol type.
- ② Click [Test] to test whether the device is connected successfully or not.
- ③ Select transfer server, storage server and area and then click [OK].

Devices can be added in batch by adding IP range.

Devices can be added in batch by adding IP range.

### 3.1.3 Initiatively Report

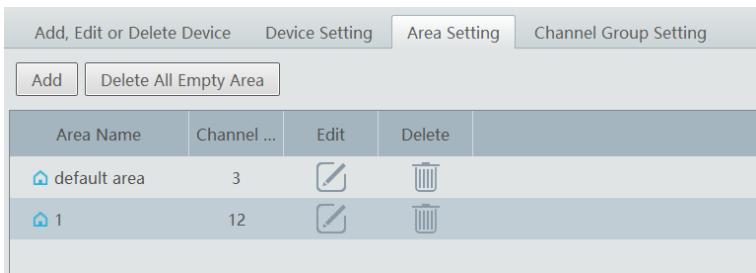
Select the “Initiatively Report” Tab to see the following interface.

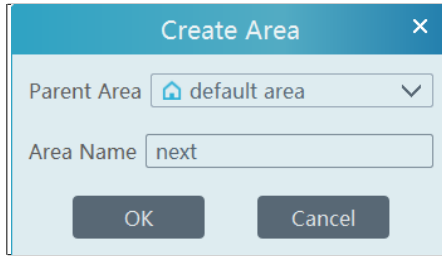


- ① Enter the device ID set in the DVR/NVR or IP camera and choose the protocol.
  - If the DVR/NVR is needed to add, please go to Network→Server interface of the DVR/NVR. Check “Enable”, enter the IP address and port (default 2009) of the NVMS and then set the device number of the DVR/NVR.
  - If the IP camera is needed to add, please go to Network Configuration→Server Configuration of the IP camera. Check “Do you want IPcamera to connect Server”, enter the IP address and port (default 2009) of the NVMS and then set the device number of the IP camera.
- ② Select the transfer server, storage server, area and then click [OK].



### 3.2 Area Setting

Go to Home→Area Setting interface as shown below.



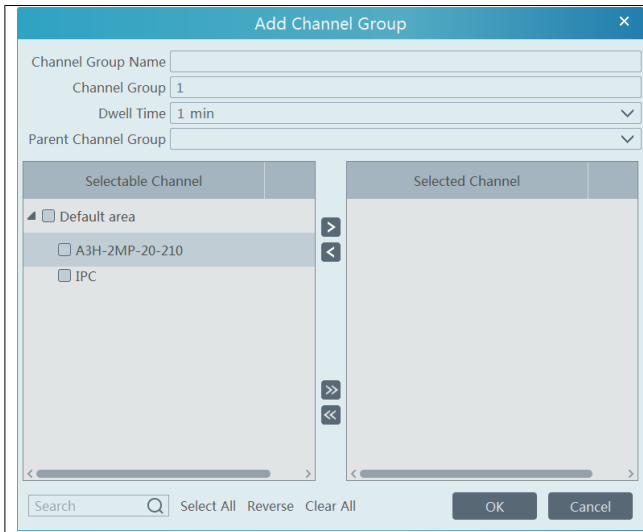






Click [Add] to go to Area adding interface. Enter area name to create parent area. Then click [OK] to save the settings. To create sub area, click [Add], choose the parent area, enter the area name and click [OK].



Click  to modify area; click  to delete area.

### 3.3 Channel Group Setting

Go to Home → Channel Group Setting interface as shown below.



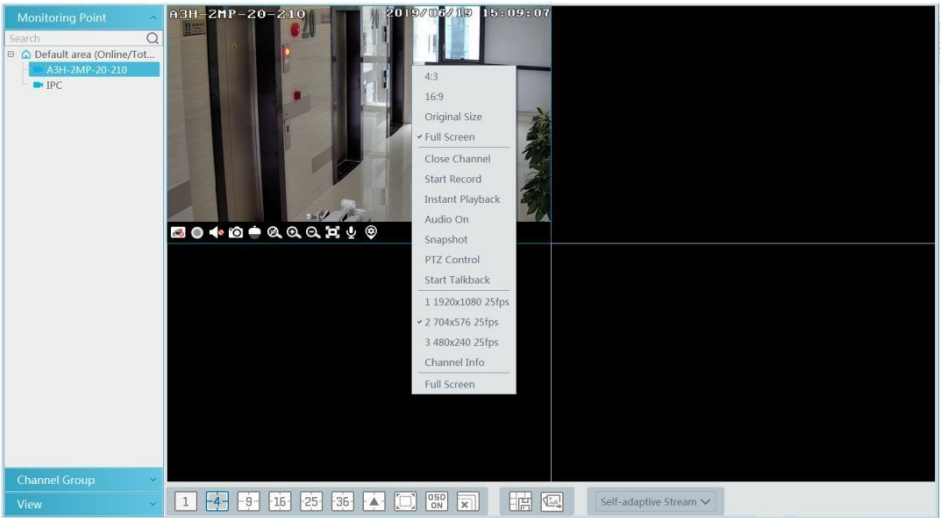
- ① Click [Add].
- ② Enter channel group name, keyboard number and dwell time.
- ③ Add channels to the channel group. Check the desired channels and click  to add channels; choose the selected channel and click  to remove those channels; Click  to add all channels; click  to remove all selected channels.
- ④ Click [Ok] to save the settings.

Select the added channel group and click  to modify the channel; click  to delete the channel.

## 4 Live View

### 4.1 Live View

Go to Home → Live View interface as shown below.













The descriptions of the live view buttons are as follows.



NO.	Description	NO.	Description
1	Screen display mode	5	Save the current view mode
2	Full screen	6	Snapshot management
3	Enable/disable OSD	7	Choose channel stream
4	Close all channel view		



Toolbar on the display window:

Button	Description	Button	Description
	Close image		3D zoom in
	Start/stop recording		Zoom in
	Enable/disable audio		Zoom out
	Snapshot		Fit to window
	PTZ control		Enable/disable talkback

### 4.1.1 Monitoring Point View



● **Start View**

To start live view, please drag cameras from the list to the right display window or select a window and then double click the camera.

The image can be dragged to any window at random.



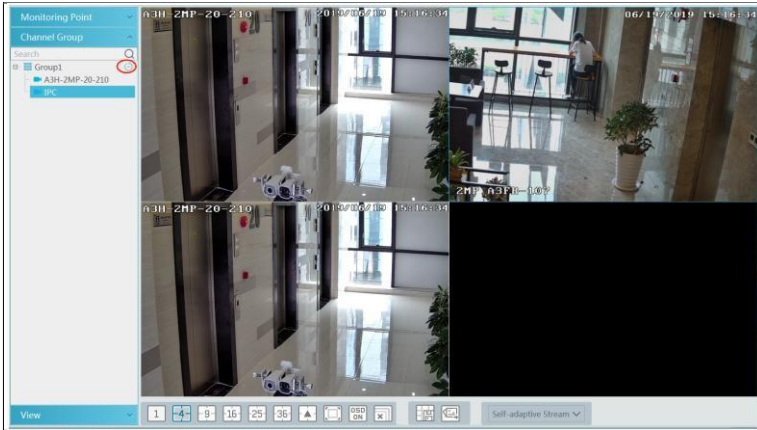
● **Stop View**

- ① Place the cursor on the live view window to display the menu toolbar and then click  to stop viewing.
- ② Right click on the live view window and then select “Close Channel” to stop viewing.
- ③ Click  on the toolbar of the live view interface to stop all live view.


### 4.1.2 Channel Group View

● **Start Channel Group View**



After the channel group is set successfully (See [3.3 Channel Group Setting](#)), go to live view interface as shown below.



You can start the channel group view as follows.

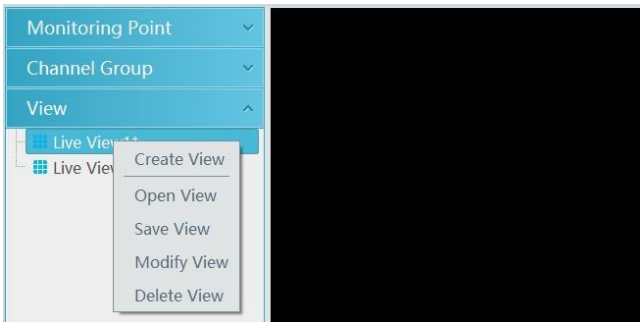
1. Choose the screen display mode according to the channel number of the channel group. Select a window and then double click the channel group name or dragging the channel group to a window to play all channels in the group.
2. In the current screen display mode, select a window and then click  beside the channel group name to play all channels of the channel group in this window in sequence.

### ● Stop Channel Group View



- ① Place the cursor on the auto-switch window and then click  to stop viewing.
- ② Right click the auto-switch window and then click “Close Channel” to stop viewing.
- ③ Click  on the toolbar of the live view interface to stop all live view.

## 4.1.3 Plan View

In the live view interface, select “View” on the left menu bar.



### ● Add View Plan:

- ① Right click “Live View 1” and then select “Create View” or click  to add a new view plan. Clicking “Create View” to prompt an adding view window. Enter the view name and click [OK] to set view plan.
- ② Select screen display mode and then drag monitoring points or channel group to each window.
- ③ Click “View” on the left menu and then right click the newly added view name. Select “Save View” on the pop-up menu to save the view plan or click  on the live view interface to save the view plan.

Double click view name to call the view plan.


● **Modify or Delete View Plan**

Select the added view and then right click to prompt a pop-up window. Select “Modify View” or “Delete View” to modify or delete the view plan.

## 5 Record & Playback

### 5.1 Record Configuration

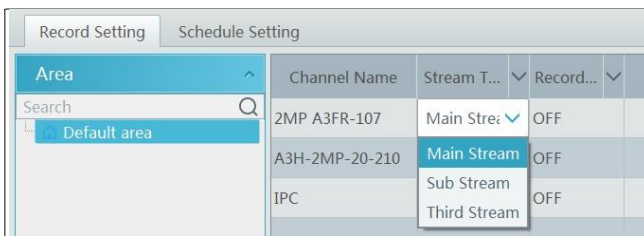
#### 5.1.1 Manual Recording

In the live view interface, select a channel and then click  or right click to select “Start record” to start recording. Click this button again to stop recording.

**Note:** If a channel is recording, closing viewing will stop recording.

#### 5.1.2 Schedule Recording

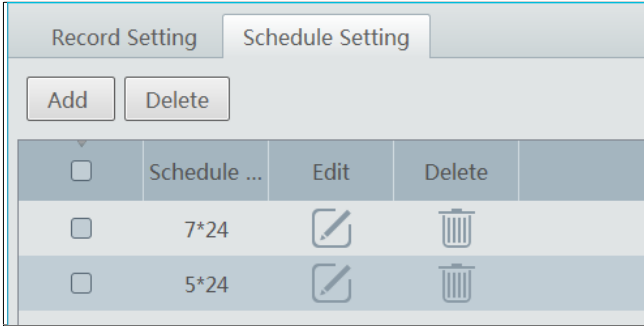
Go to Home → “Record Setting”.





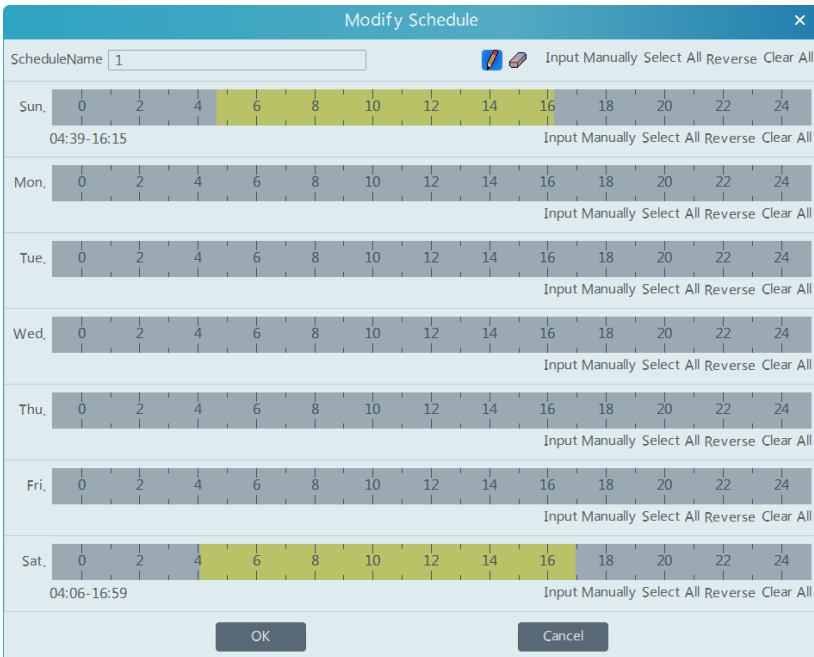
To set schedule recording, select the channel, stream type and schedule. Then Click [Apply] to save the settings.

● **To set schedule:**

- ① Click the “Schedule Setting” tab to go to the following interface.



- ② Click [Add].
- ③ Enter the schedule name.
- ④ Set the schedule. Click  and then move the cursor to select the time; click  and then move the cursor to delete the selected time. Click “Input Manually” to manually enter the time. Click “All” or “Reverse” to quickly select time. Click “Clear All” to clear all schedule.



### 5.1.3 Alarm Linkage Recording

- ① Go to Home→ Configure Device interface. Select the desired device to enable and set

schedules.

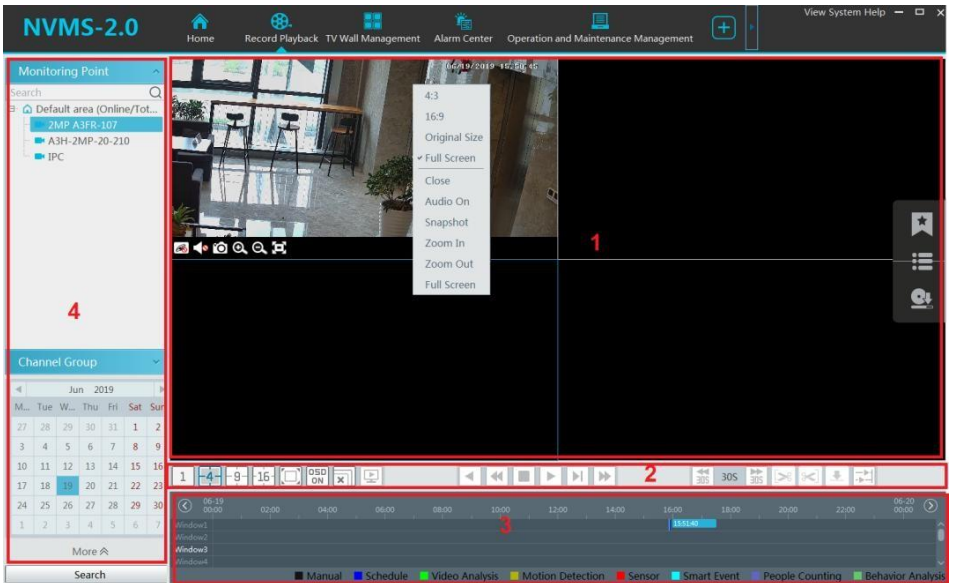
- ② Go to Home→Alarm Center→Alarm Linkage as shown below. Select alarm type, enable record, set linkage channel and set schedules.
- ③ Click [Apply] to save the settings.

Area	Alarm Type	Channel-Motion Detection	All ON	All OFF	Reset	Apply	Filter		
Default area	Name	Audio	PTZ Control	Record	Alarm View	Snapshot	Alarm Output	TV Wall	Schedule
	ZMP A3FR-107	OFF	OFF	OFF	OFF	OFF	OFF	OFF	OFF
	A3H-2MP-20-210	OFF	OFF	OFF	OFF	OFF	OFF	OFF	OFF
	IPC	OFF	OFF	OFF	OFF	OFF	OFF	OFF	OFF

## 5.2 Record Playback

In the main menu interface, click “Record Playback” to go to record playback interface. Record files saved on the HDD/ SD card of the devices and storage server can be played.

There are two types of record playback: synchronous playback and asynchronous playback.









Area Description:














Area	Description	Area	Description
------	-------------	------	-------------





1	Playback area	3	Record timetable area
2	Toolbar	4	Time and event search area; resource area

Toolbar on Playback Window :




Button	Description	Button	Description
	Stop viewing		Zoom in
	Audio on/off		Zoom out
	Snapshot		Fit to window


Button Descriptions of Area 2 :

Button	Description
	Screen display mode button. 1/4/9/16 screen mode is optional.
	Full screen
	Enable or disable OSD
	Close all window viewing
	Get record from network devices
	Get record from storage servers
	Rewind
	Low speed playback
	Stop
	Play/Pause
	Next frame. In the playback mode, click the pause button and then click this button to play frame by frame.
	Click it to select playback speed.
	Forward 30s or backward 30s

	Backup start time
	Backup end time
	Start backup
	Synchronous playback or asynchronous playback

Other buttons :




Button	Description	Button	Description
	Add tag		Event list
	Backup		

Set record date, record type (for some devices, “Main Stream” can be selected to play the record, or the record will be played by sub stream if unselected) and the record playback source in the playback interface. Drag the camera on the right side to playback window for playing or double click a desired channel to play or click [Search] to search the record files and then click  to play.

Playback record type includes manual recording, motion detection recording, schedule recording, sensor recording, object removal recording, video exception recording, intrusion recording and line crossing recording and so on.

In the timetable, different color bars stand for different record types. For instance, yellow bar stands for motion recording data; blue bar stands for schedule recording data; red bar stands for sensor record data, etc.



The time scale can be zoomed in by clicking  and the time scale can be zoomed out by clicking . The time scale can be restored to 24 hours by clicking . When the time scale is zoomed in, drag the timeline to see the time spots.


## 5.2.1 Instant Playback

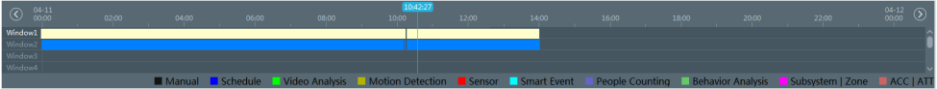
### ➤ Instant Playback



In the live view interface, right click on a playing channel to select “Instant Playback” and then set the playback time to play the record instantly (the record of the channel in the past five minutes will be searched and played from that time when the record exists).

## 5.2.2 Synchronous Playback

**Synchronous Playback:** in a certain time, all channels playback its record at the same time together; if one channel has no record data at this time, this channel will wait.


Click  on the toolbar in the playback interface to go to the synchronous playback interface. Please play the record according to the ways introduced as above. The record bar in synchronous mode is as below.



In synchronous mode, one camera can only have one playing window. All cameras' record information can be viewed at the same time. When playing record file in synchronous mode or asynchronous mode, clicking  or  will be useless unless all the playback windows are closed.

## 5.2.3 Asynchronous Playback

**Asynchronous Playback:** when playing some channels' record at the same time, each channel is independent from the others and each channel's playback time is different.

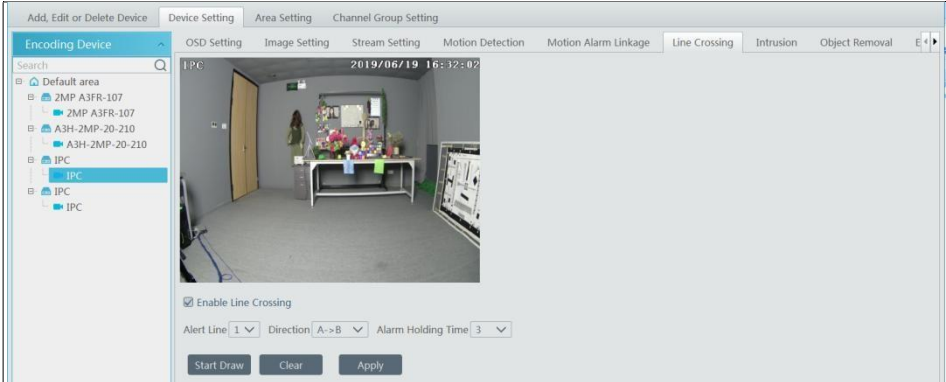
Click  to go to the asynchronous playback interface as shown below. Please play the record according to the ways introduced as the above. The record bar in asynchronous mode is as below.



# 6 Alarm Management

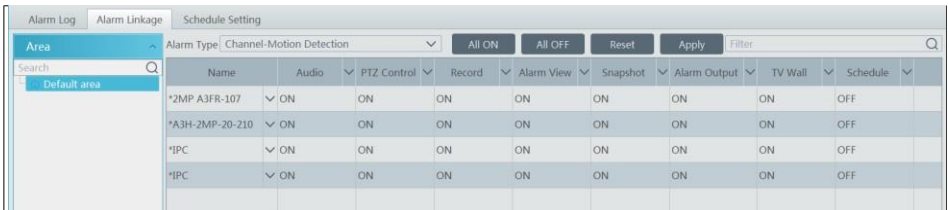
- ① Go to Home → Device Setting interface.





Select the desired device to enable alarms (refer to the user manual of the corresponding device for the detailed settings).

② Go to Home→Alarm Center→Alarm Linkage interface.



Select area, alarm type and then enable alarm linkages.

All ON: enable all alarm linkages of the current alarm type and area (schedule excluded).

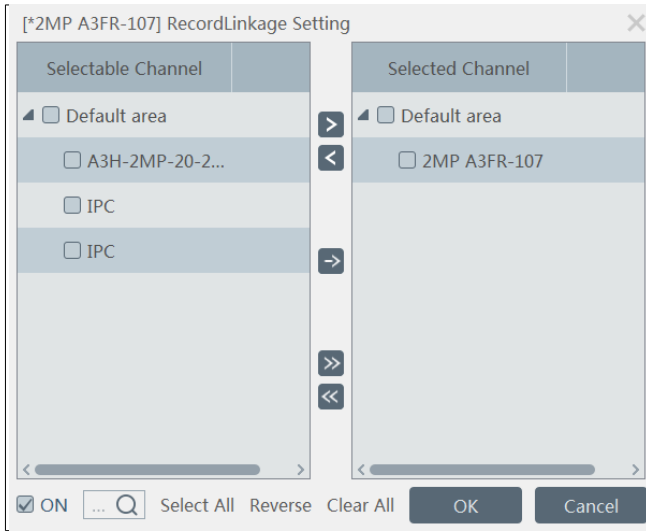
All OFF: disable all alarm linkages of the current alarm type and area (schedule excluded).





Select  beside the device name and select "ON" to enable all alarm linkages of the device (schedule excluded).

1(11)_IPC1344244	<input type="checkbox"/>	ON	ON	ON	ON	ON	ON	ON	OFF
1(31)_name	<input type="checkbox"/>	OFF	OFF	ON	OFF	OFF	OFF	OFF	OFF
1(48)_name	<input type="checkbox"/>	OFF	OFF	ON	OFF	OFF	OFF	OFF	OFF

Select  beside the title (like record) to enable record linkage of all devices (schedule excluded).

The alarm linkage settings of PTZ control, record, alarm view, snapshot, alarm output and TV Wall are the same with each other. Here take record linkage for example to introduce the setting steps.



Check the selectable channel and click  to select the channel; check the selected channel and click  to remove this channel; click  to select all channels; click  to remove all selected channel. After the channels are selected, check “On” and then click “OK” to save the settings.

③ Set alarm schedule. Select the schedule of the desired device. 7\*24 or 5\*24 is the default schedule. Other schedules need to be set in advance. Click the “Schedule Setting” tab to set (See **Schedule Recording** → **To set schedule** for details).

