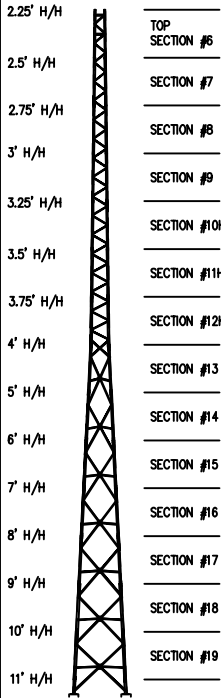


140FT S610 SUPERTITAN TOWER



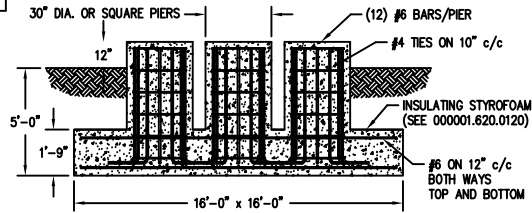
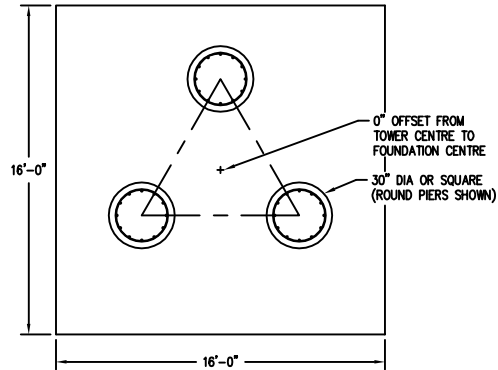
TOP SECTION #6
SECTION #7
SECTION #8
SECTION #9
SECTION #10HD
SECTION #11HD
SECTION #12HD
SECTION #13
SECTION #14
SECTION #15
SECTION #16
SECTION #17
SECTION #18
SECTION #19

MAXIMUM ALLOWABLE ANTENNA AREA - PER TIA/EIA 222 REV. F						
WIND VELOCITY RATINGS						
NO ICE (ROUND/FLAT)			1/2" ICE (ROUND/FLAT)			
70 mph	90 mph	100 mph	70 mph	90 mph	100 mph	
75/53	25/17	5/3	62/44	24/17	5/3	

MAXIMUM ALLOWABLE ANTENNA AREA - PER TIA/EIA 222 REV. G, CLASS 1 (NO ICE)						
WIND VELOCITY RATINGS						
90 mph 3ag		110mph 3ag		120 mph 3ag		
75 mph FM		90 mph FM		100 mph FM		
3ag = 3 SECOND GUST WINDSPEED		FM = FASTEST MILE WINDSPEED				
ROUND	FLAT	ROUND	FLAT	ROUND	FLAT	
64	45	14	10	--	--	

FOUNDATION LOADS:
 MAX. OVERTURNING MOMENT (K*FT) =
 MAX. SHEAR (kips) =
 MAX. AXIAL (kips) =

FOUNDATION DESIGN (NORMAL DRY SOIL)



CUBIC YARDS of CONCRETE				
PAD	RND PIER	SQ PIER	TOTAL RND	TOTAL SQ
16.59	0.77	0.98	18.91	19.54

REV.	BY:	CHK:	DESCRIPTION	DATE

REFERENCE DRAWINGS:

DRAWING NUMBER	DRAWING NUMBER

CONFIDENTIAL: ALL INTELLECTUAL PROPERTY RIGHTS HEREIN ARE THE PROPERTY OF TRYLON INC. ALL DUPLICATION, RECORDING, DISCLOSURE OR USE IS PROHIBITED WITHOUT WRITTEN CONSENT OF TRYLON INC.

Trylon

DRAWING NO. 000001.620.0456

CUSTOMER: SITE: SCALE: 220.000

DATE: 16 APR 07 BY: CHK: APP:

TITLE: 140FT S610 SUPERTITAN PROFILE

NOTES: 1) KNOCK-DOWN PART NUMBER 5.94.0610.140.
 2) PRE-ASSEMBLED PART NUMBER: NOT AVAILABLE.
 3) ANTENNA LOADS ARE CENTRALLY LOCATED AND BALANCED, 3-FT OR LESS ABOVE THE TOWER TOP.
 4) WIND LOADING ASSUMES (1) 1/2" TRANSMISSION LINE PER 10 SQ.FT. OF ROUND MEMBER ANTENNA AREA.