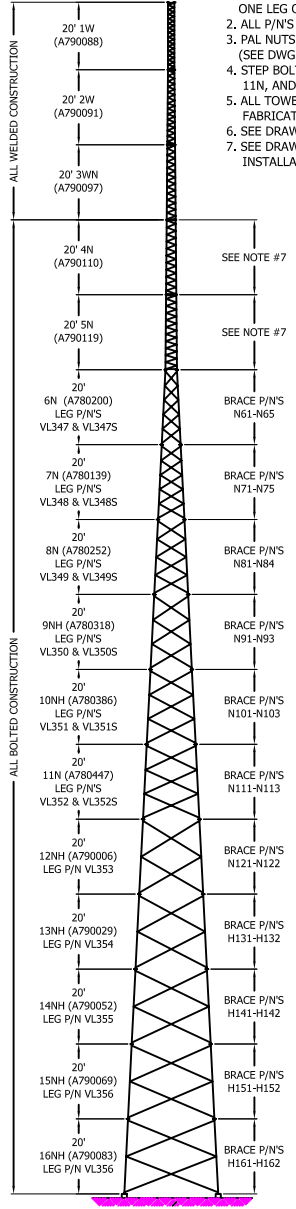


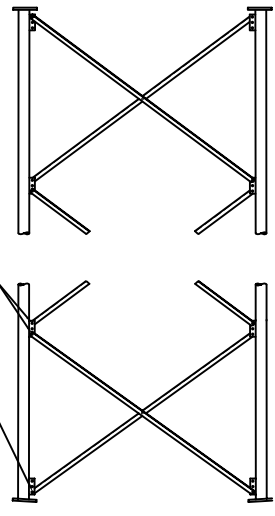
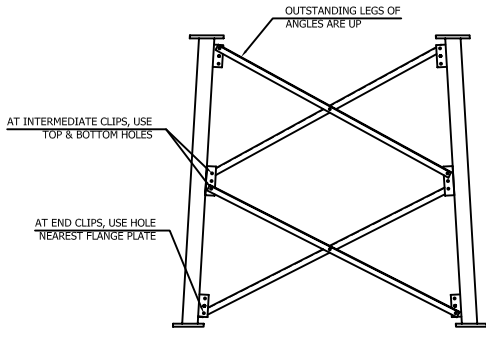
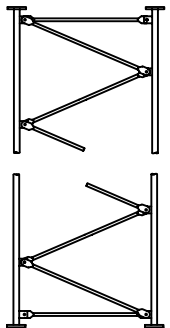
GENERAL NOTE:

1. LEG P/N IS STAMPED AT THE BOTTOM OF EACH LEG OF EACH BOLTED SECTION. SECTION # IS STAMPED AT THE BOTTOM OF ONE LEG OF EACH WELDED SECTION.
2. ALL P/N'S METAL STAMPED BEFORE GALVANIZING.
3. PAL NUTS PROVIDED FOR ALL TOWER BOLTS.
(SEE DWG. A790135)
4. STEP BOLTS PROVIDED ON ONE LEG FOR SECTIONS 6N THRU 11N, AND STEP BOLTS ON 3 LEGS FOR SECTIONS 12N THRU 16N.
5. ALL TOWER MEMBERS ARE HOT-DIPPED GALVANIZED AFTER FABRICATION.
6. SEE DRAWING D870480 FOR FOUNDATION DETAILS.
7. SEE DRAWING #SK720305 FOR 4N & 5N SECTION BRACE INSTALLATION.



TOWER SCHEDULE								A325 (.38 DIA. BOLTS S.A.E. GRADE 5)	
SECTION #	SPREAD DIMENSION		TOWER LEGS	TOWER BRACES	FLANGE PLATES		FLANGE BOLTS	BRACE BOLTS	
	UPPER	LOWER	50 KSI YIELD STR.	MIN. 33 KSI YIELD STR.	TOP	BOTTOM			
1W	1'-2"	1'-2"	9/16" DIA. SOLID	3/8" DIA. SOLID	3"X3"X3/8" 2-21/32" B.C.	3"X3"X3/8" 2-21/32" B.C.	(12) 3/8"X1-1/2"	N/A	
2W	1'-2"	1'-6"	3/4" DIA. SOLID	3/8" DIA. SOLID	3"X3"X3/8" 2-21/32" B.C.	3"X3"X3/8" 2-21/32" B.C.	(12) 3/8"X1-1/2"	N/A	
3WN	1'-6"	1'-10"	15/16" DIA. SOLID	7/16" DIA. SOLID	3"X3"X3/8" 2-21/32" B.C.	4"X4"X1/2" 3-1/2" B.C.	(12) 1/2"X2"	N/A	
4N	1'-10"	2'-2"	1-1/4" DIA. SOLID	5/8" DIA. SOLID	4-1/2"X4-1/2"X5/8" 3-1/2" B.C.	4-1/2"X4-1/2"X5/8" 4-1/4" B.C.	(12) 5/8"X2-1/4"	(72) 3/8"X1-1/2"	
5N	2'-2"	2'-6"	1-7/16" DIA. SOLID	5/8" DIA. SOLID	4-1/2"X4-1/2"X5/8" 4-1/4" B.C.	4-1/2"X4-1/2"X5/8" 4-1/4" B.C.	(12) 5/8"X2-1/4"	(72) 3/8"X1-1/2"	
6N	2'-6"	4'-6 1/4"	2" STD PIPE	L1-1/2"X1-1/2"X1/8"	4-1/2"X4-1/2"X5/8" 4-1/4" B.C.	5"X5"X3/4" 4-15/16" B.C.	(12) 5/8"X2-1/2"	(75) 1/2"X1-1/4"	
7N	4'-6 1/4"	6'-6 3/4"	2" STD PIPE	L1-1/2"X1-1/2"X1/8"	5"X5"X3/4" 4-15/16" B.C.	5"X5"X3/4"* 4-15/16" B.C.	(12) 5/8"X2-1/2"	(75) 1/2"X1-1/4"	
8N	6'-6 3/4"	8'-6 3/4"	2-1/2" STD PIPE	L1-1/2"X1-1/2"X1/8"	5"X5"X3/4" 4-15/16" B.C.	5"X5"X3/4" 4-15/16" B.C.	(12) 5/8"X2-1/2"	(60) 1/2"X1-1/4"	
9NH	8'-6 3/4"	10'-6 3/4"	2-1/2" EH PIPE	L1-3/4"X1-3/4"X1/8"	5"X5"X3/4" 4-15/16" B.C.	5"X5"X3/4" 4-15/16" B.C.	(12) 5/8"X2-1/2"	(45) 1/2"X1-1/4"	
10NH	10'-6 3/4"	12'-7 1/4"	2-1/2" EH PIPE	L2"X2"X1/8"	5"X5"X3/4" 4-15/16" B.C.	6"X6"X3/4"* 5-21/32" B.C.	(12) 3/4"X2-3/4"	(45) 1/2"X1-1/4"	
11N	12'-7 1/4"	14'-7 7/8"	3" STD PIPE	L2-1/2"X2-1/2"X3/16"	6"X6"X3/4" 5-21/32" B.C.	7"X7"X1"* 7-1/16" B.C.	(12) 7/8"X3-1/2"	(45) 1/2"X1-1/4"	
12NH	14'-7 7/8"	16'-8 3/8"	3-1/2" EH PIPE	L3"X3"X3/16"	7"X7"X1" 7-1/16" B.C.	7"X7"X1"* 7-1/16" B.C.	(12) 7/8"X3-1/2"	(30) 5/8"X1-1/2"	
13NH	16'-8 3/8"	18'-8 3/8"	4" EH PIPE	L3"X3"X3/16"	7"X7"X1" 7-1/16" B.C.	7"X7"X1" 7-1/16" B.C.	(12) 7/8"X3-1/2"	(30) 5/8"X1-1/2"	
14NH	18'-8 3/8"	20'-9 3/8"	4" EH PIPE	L3-1/2"X3-1/2"X1/4"	7"X7"X1" 7-1/16" B.C.	9-1/2"X9-1/2"X1-1/4"* 9-1/2" B.C.	(12) 1"X4-1/4"	(30) 5/8"X1-3/4"	
15NH	20'-9 3/8"	22'-9 3/8"	5" EH PIPE	L4"X4"X1/4"	9-1/2"X9-1/2"X1-1/4" 9-1/2" B.C.	9-1/2"X9-1/2"X1-1/4" 9-1/2" B.C.	(12) 1"X4-1/4"	(30) 5/8"X1-3/4"	
16NH	22'-9 3/8"	24'-9 3/8"	5" EH PIPE	L4"X4"X1/4"	9-1/2"X9-1/2"X1-1/4" 9-1/2" B.C.	9-1/2"X9-1/2"X1-1/4" 9-1/2" B.C.	(12) 1"X4-1/4"	(30) 5/8"X1-3/4"	

* ASTERISK INDICATES THAT THE BOTTOM FLANGE PLATE OF THAT SECTION IS OFFSET.



WEIGHTS			
SECTION #	LEGS	BRACES	TOTAL
1W	---	---	116
2W	---	---	160
3WN	---	---	230
4N	260	175	435
5N	345	195	540
6N	290	190	480
7N	300	245	545
8N	426	274	700
9NH	535	305	840
10NH	545	400	945
11N	570	840	1,410
12NH	905	825	1,730
13NH	1,050	910	1,960
14NH	1,110	1,625	2,735
15NH	1,530	2,000	3,530
16NH	1,530	2,150	3,680

FILE NO. Standard-SSV

REVISIONS				
REV.	DESCRIPTION	DWN	CHK	APP
12	REDRAWN INTO AUTOCAD FORMAT	DLJ	JWS	HA
DATE: May/25/2007				

DWG REFERENCE

ROHN PRODUCTS
6718 WEST PLANK ROAD
PEORIA, IL 61604
TOLL FREE 800-727-ROHN

THIS DRAWING IS THE PROPERTY OF ROHN, IT IS NOT TO BE REPRODUCED, COPIED OR TRACED IN WHOLE OR IN PART WITHOUT OUR WRITTEN CONSENT.

STANDARD SECTIONS
MODEL SSV TOWER HEAVY SERIES

DWN: O.H	CHK'D: WDU	DATE: Jan/01/1969
ENGR: RJL		
DRAWING NO: E680101		REV: 12