

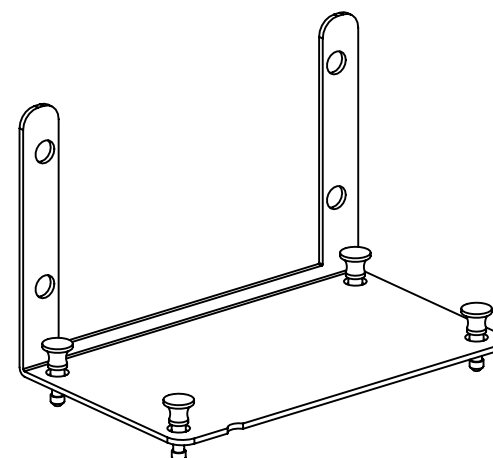
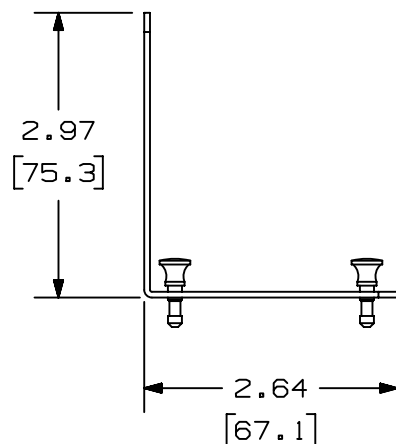
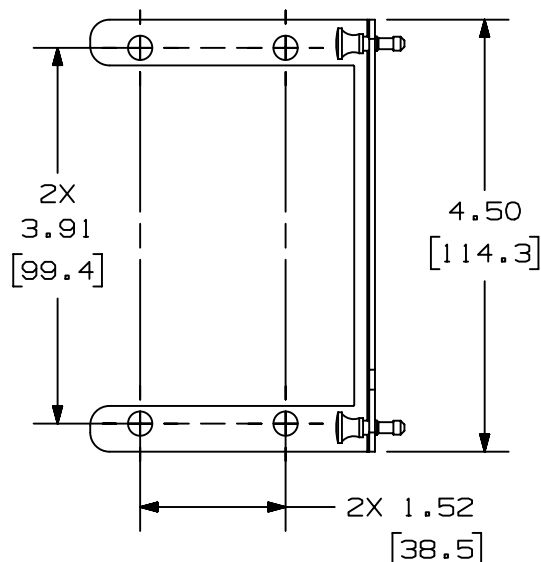
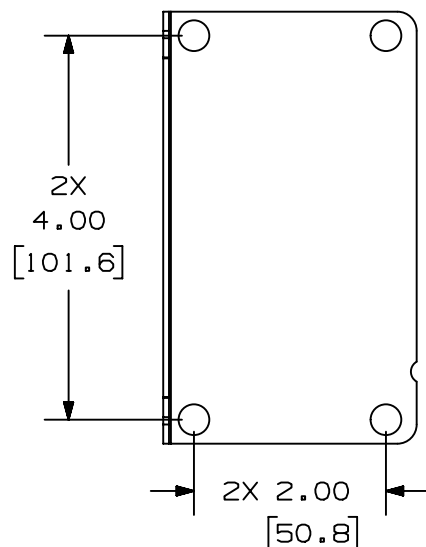
2

1

THIS COPY IS PROVIDED ON A RESTRICTED BASIS AND IS NOT TO BE USED IN ANY WAY DETRIMENTAL TO THE INTERESTS OF PANDUIT CORP.

# NOTES:

1. VISIT OUR ON-LINE CATALOG AT [WWW.PANDUIT.COM](http://WWW.PANDUIT.COM) FOR A LIST OF CURRENT PARTS APPLICABLE FOR USE WITH THIS PRODUCT.
2. DIMENSIONS IN [ ] ARE METRIC.
3. ALL MATERIALS AND COMPONENTS USED MEET THE MATERIAL RESTRICTIONS OF RoHS (EUROPEAN DIRECTIVE 2011/65/EU ON THE RESTRICTION OF HAZARDOUS SUBSTANCES) AS PROPOSED BY THE RoHS TECHNICAL ADAPTATION COMMITTEE.
4. WEIGHT: .25 lbs [ .11 kg ]
5. PART INCLUDES:  
(1) CASSETTE BRACKET



PART NUMBER		MSFCB2	
TITLE		OPTICOM FIBER CASSETTE ADAPTER BRACKET FOR 2 CASSETTES FOR USE WITH MULTI-PURPOSE ENCLOSURES	
ITEM REVISION NAME		CUSTOMER DRAWING	
DATASET FILE NAME		01055EEQ/00	
MATERIAL		N/A	
DRAWING NUMBER		01055EEQ-DC	
THIRD ANGLE PROJECTION		PANDUIT	
DRAWN BY		JBO	
DATE		8-14-23	
CHK		KZU	
SCALE		NONE	
SHEET 1 OF 1		A	

REV	DATE	BY	CHK	APR	DESCRIPTION	ECN
00A	8-14-23	JBO	KZU	TAM	INITIAL RELEASE	M09000PC/09

2

1