

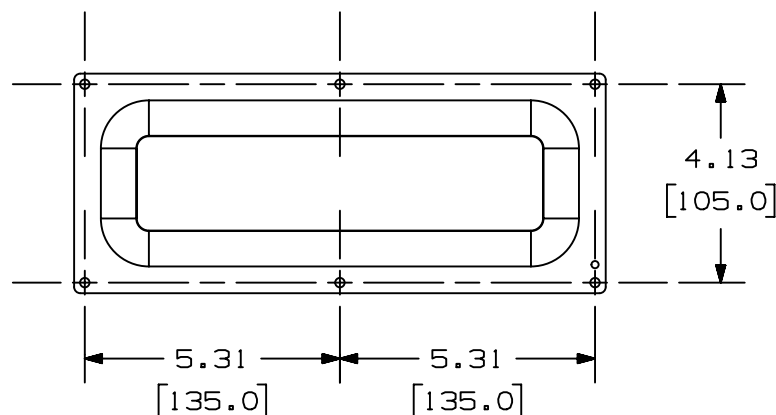
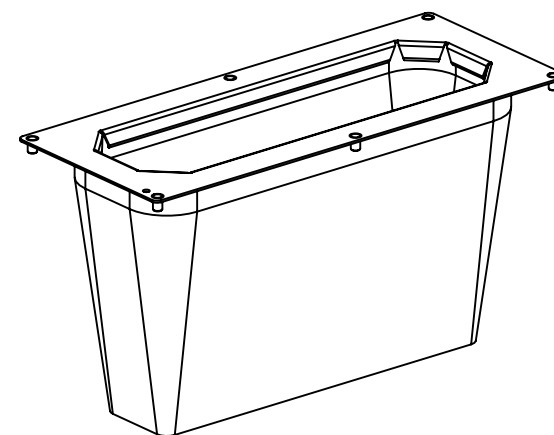
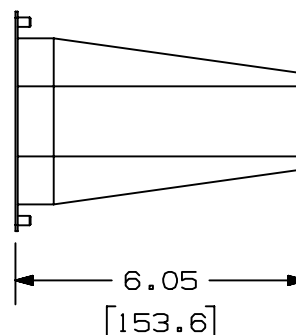
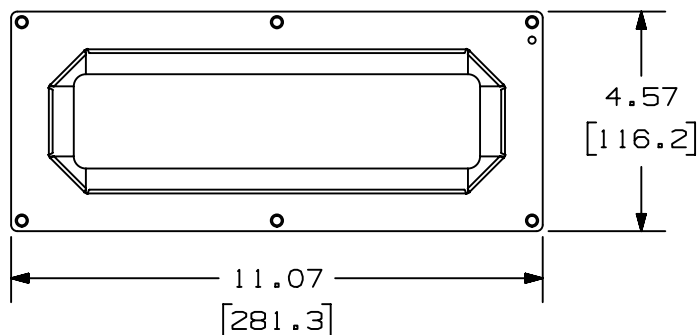
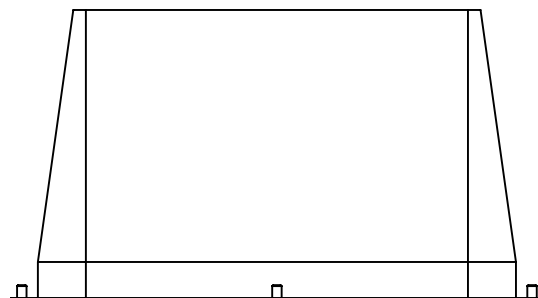
2

1

THIS COPY IS PROVIDED ON A RESTRICTED BASIS AND IS NOT TO BE USED IN ANY WAY DETRIMENTAL TO THE INTERESTS OF PANDUIT CORP.

# NOTES:

1. VISIT OUR ON-LINE CATALOG AT [WWW.PANDUIT.COM](http://WWW.PANDUIT.COM) FOR A LIST OF CURRENT PARTS APPLICABLE FOR USE WITH THIS PRODUCT.
2. DIMENSIONS IN [ ] ARE METRIC.
3. ALL MATERIALS AND COMPONENTS USED MEET THE MATERIAL RESTRICTIONS OF RoHS (EUROPEAN DIRECTIVE 2011/65/EU ON THE RESTRICTION OF HAZARDOUS SUBSTANCES) AS PROPOSED BY THE RoHS TECHNICAL ADAPTATION COMMITTEE.
4. WEIGHT: .6 lbs. [ .28 kg ]
5. PART INCLUDES:  
COOL BOOT (R) AIR SEALING GROMMET WITH NYLON SLEEVE AND TIE CORD



PART NUMBER		MSICECB	
TITLE		COOL BOOT FOR MULTI-PURPOSE IN-CEILING ENCLOSURE	
ITEM REVISION NAME		CUSTOMER DRAWING	
DATASET FILE NAME		01055EFM-DC/00A	
MATERIAL		STEEL, NYLON	
DRAWING NUMBER		01055EFM-DC	
THIRD ANGLE PROJECTION		PANDUIT	
DRAWN BY		TAM	
DATE		10-21-22	
CHK		KZU	
SCALE		NONE	
SHEET 1 OF 1		A	

2

1

REV	DATE	BY	CHK	APR	DESCRIPTION	ECN
00A	10-21-22	TWV	KZU	TAM	INITIAL RELEASE	M09000PC/09

B

A



B

A



B

A



B

A



B

A



B

A



B

A



B

A



B

A



B

A



B

A



B

A



B

A



B

A



B

A



B

A



B

A



B

A



B

A



B

A



B

A



B

A



B

A



B

A



B

A



B

A



B

A



B

A



B

A



B

A



B

A



B

A



B

A



B

A



B

A



B

A



B

A



B

A



B

A



B

A



B

A



B

A



B

A



B

A



B

A



B

A



B

A



B

A



B

A



B

A



B

A



B

A



B

A



B

A



B

A



B

A



B

A



B

A



B

A



B

A



B

A



B

A



B

A



B

A



B

A



B

A



B

A



B

A



B

A



B

A



B

A



B

A



B

A



B

A



B

A



B

A

