

Data Surge Protector SPD ALPU Outdoor Gigabit Ethernet/PoE++ Shielded RJ45 SASD CE Compliant, IEC60950-1, ATEX, UL



1101-959 ALPU PTP M

Features

- UL/IEC60950-1, ATEX
- Models for all Common Ethernet/PoE Protocols
- Shielded RJ-45
- Pole or Wall Mount

Applications

- Gigabit Ethernet/PoE++ Networks
- Telecommunications Base Stations
- WISP/ISP
- IT & Data Centers
- Point-to-Point Links
- Control Lines and Sense Loops
- Oil & Gas

Description

Data surge protector (also known as SPD or lightning protector) 1101-959 from Transtector is an outdoor style SPD that utilizes state of the art SASD technology to protect critical equipment in Gigabit Ethernet/PoE++ protocol data networks while remaining transparent to data throughput. This surge protector provides effective protection against electrical transient surges that are generated both by external lightning events and by internal switching events and supports long-term system reliability by absorbing high amounts of transient energy while maintaining a very low clamping voltage. Transtector Data Signal surge protectors are available in stock with same day shipping.

Electrical Specifications

Description	Minimum	Typical	Maximum	Units
Connectors		Shielded RJ45		
Compatible Cables		Cat5/5e UTP/STP, Cat6/6A STP		
Data Protocols		Gigabit Ethernet/PoE++		
Data Rate			1,000	Mb/s
Characteristic Impedance			100	Ohms
Capacitance (Common)			15	pF
Power over Ethernet Protocols		PoE		
Vdc Rating (Data)		75	90	Vdc
PoE Power			90	W
PoE Current Per Pin			1	A

Surge Protection Specification

Description	Minimum	Typical	Maximum	Units
Surge Protection Technology		SASD		

Click the following link (or enter part number in "SEARCH" on website) to obtain additional part information including price, inventory and certifications:
[Data Surge Protector SPD ALPU Outdoor Gigabit Ethernet/PoE++ Shielded RJ45 SASD CE Compliant, IEC60950-1, ATEX, UL 1101-959](#)

Data Surge Protector SPD ALPU Outdoor Gigabit Ethernet/PoE++
 Shielded RJ45 SASD CE Compliant, IEC60950-1, ATEX, UL



1101-959
ALPU PTP M

Protected Pins	[1,2], [3,6], [4,5], [7,8]		
Protection Modes	L-G		
10/1000µs Surge Current			
L-G		100	A
Vpl 10/1000µs			
L-G	134 @ 100A		Vpk
Response Time		5	ns

Mechanical Specifications
Size

Height	7.14 in	[181.36 mm]
Width	5.69 in	[144.53 mm]
Depth	1.65 in	[41.91 mm]
Weight	0.8 lbs	[362.87 g]

Environmental Specifications

Operating Temperature	-40 to +75 deg C
Storage Temperature	-40 to +75 deg C
Environmental Protection Rating	NEMA 3R
Mount Type	Pole/Wall
Installation Hardware	#6 X 1" Self-Tapping Screw, Anchor
Grounding	1/4-20 Screw, Washer

Compliance Certifications

RoHS Compliant	Yes
CE Compliant	Yes
UL Compliant	Yes
Hazardous Locations Certifications	Yes
	ATEX
	IEC60950-1
	ETL 60950-1
	Haz Loc Ratings 85Vdc, 4A (1A per line) IP54
	Class 1 Division 2 Groups A,B,C,D T6

Click the following link (or enter part number in "SEARCH" on website) to obtain additional part information including price, inventory and certifications:
[Data Surge Protector SPD ALPU Outdoor Gigabit Ethernet/PoE++ Shielded RJ45 SASD CE Compliant, IEC60950-1, ATEX, UL 1101-959](#)

Data Surge Protector SPD ALPU Outdoor Gigabit Ethernet/PoE++
Shielded RJ45 SASD CE Compliant, IEC60950-1, ATEX, UL



1101-959
ALPU PTP M

Class 1 Zone 2 AEx nA IIC T6 Gc
Class 1 Zone 2 Ex nA IIC T6 Gc

Transtector Systems specializes in protection of highly sensitive, low voltage equipment through its patented, non-degrading silicon diode technology and custom filters. Our power quality expertise translates into a diverse product offering including AC, DC, and signal applications as well as integrated cabinets, power distribution panels and EMP hardened devices.

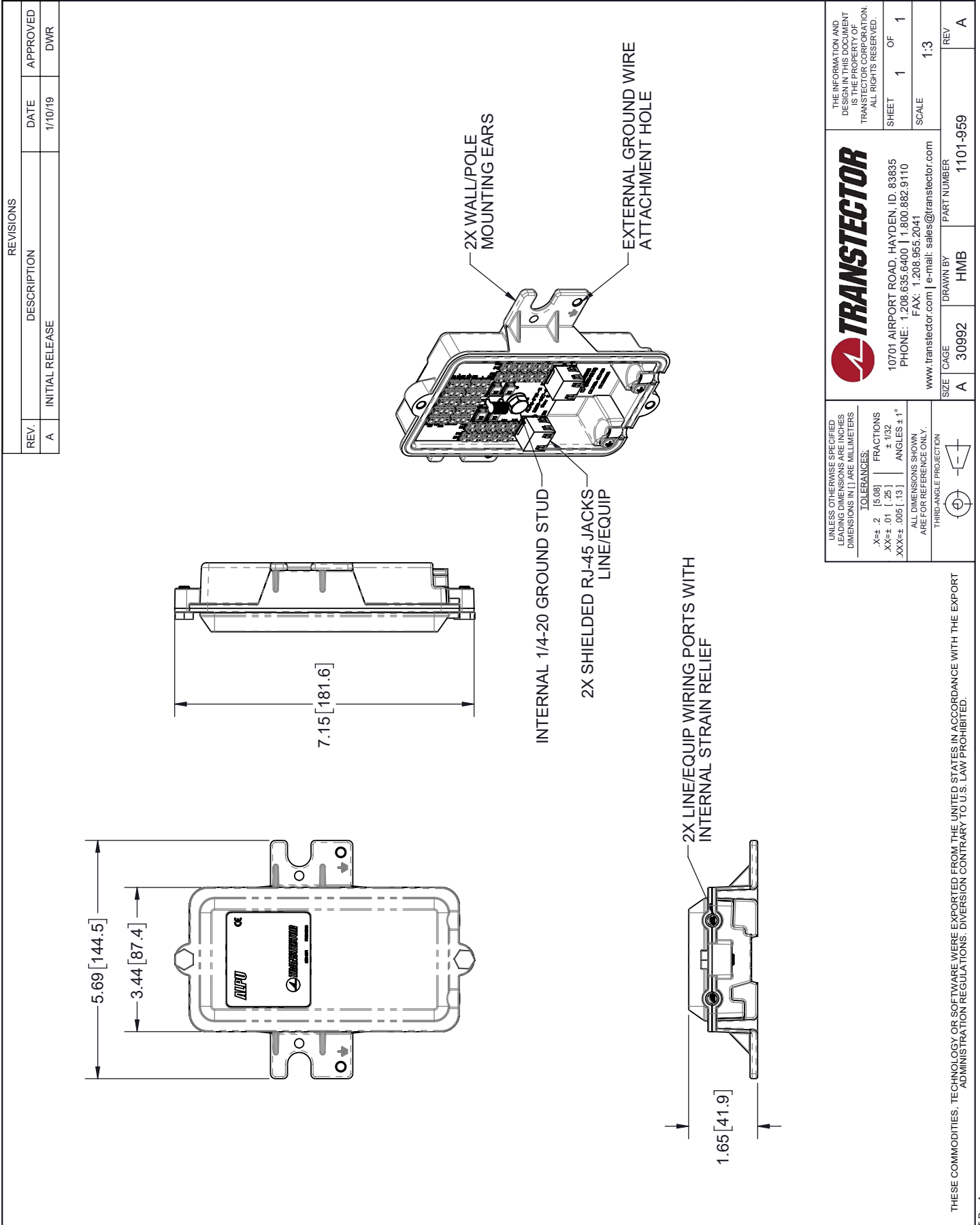
Click the following link (or enter part number in "SEARCH" on website) to obtain additional part information including price, inventory and certifications: [Data Surge Protector SPD ALPU Outdoor Gigabit Ethernet/PoE++ Shielded RJ45 SASD CE Compliant, IEC60950-1, ATEX, UL 1101-959](https://www.transtector.com/data-surge-protector-spd-alpu-outdoor-gigabit-1101-959-p.aspx)

URL: <https://www.transtector.com/data-surge-protector-spd-alpu-outdoor-gigabit-1101-959-p.aspx>

The information contained in this document is accurate to the best of our knowledge and representative of the part described herein. It may be necessary to make modifications to the part and/or the documentation of the part, in order to implement improvements. Transtector reserves the right to make such changes as required. Unless otherwise stated, all specifications are nominal. Transtector does not make any representation or warranty regarding the suitability of the part described herein for any particular purpose, and Transtector does not assume any liability arising out of the use of any part or documentation.

Data Surge Protector SPD ALPU Outdoor Gigabit Ethernet/PoE++
Shielded RJ45 SASD CE Compliant, IEC60950-1, ATEX, UL

1101-959 CAD Drawing



REVISIONS			
REV.	DESCRIPTION	DATE	APPROVED
A	INITIAL RELEASE	1/10/19	DWR

UNLESS OTHERWISE SPECIFIED LEADING DIMENSIONS ARE INCHES DIMENSIONS IN [] ARE MILLIMETERS

TOLERANCES:
 .X±.2 [5.08] FRACTIONS ± 1/32
 .XX±.01 [.25] ANGLES ± 1°
 XXX±.005 [.13]

ALL DIMENSIONS SHOWN ARE FOR REFERENCE ONLY.
 THIRD-ANGLE PROJECTION

THE INFORMATION AND DESIGN IN THIS DOCUMENT IS THE PROPERTY OF TRANSTECTOR CORPORATION. ALL RIGHTS RESERVED.

TRANSTECTOR
 10701 AIRPORT ROAD, HAYDEN, ID, 83835
 PHONE: 1.208.635.6400 | 1.800.882.9110
 FAX: 1.208.955.2041
 www.transtector.com | e-mail: sales@transtector.com

SHEET 1 OF 1
 SCALE 1:3

SIZE A CAGE 30992 DRAWN BY HMB PART NUMBER 1101-959 REV A

THESE COMMODITIES, TECHNOLOGY OR SOFTWARE WERE EXPORTED FROM THE UNITED STATES IN ACCORDANCE WITH THE EXPORT ADMINISTRATION REGULATIONS. DIVERSION CONTRARY TO U.S. LAW PROHIBITED.

T-Rev A