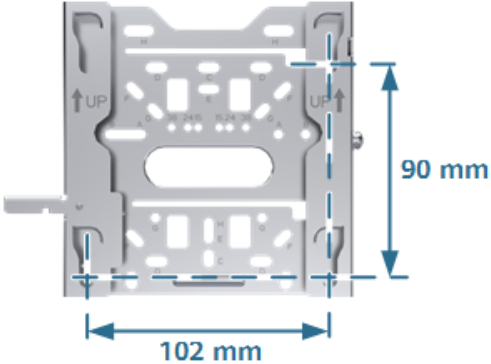


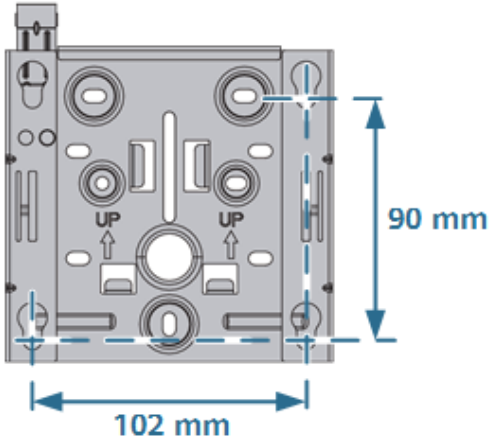


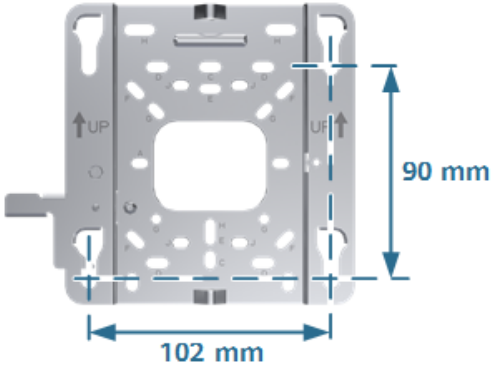

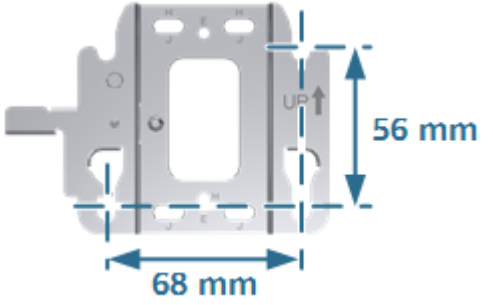



2 Installing Indoor Settled APs

2.1 Learning About Standard Mounting Brackets

The following table lists the standard mounting brackets delivered with settled APs.

Standard Mounting Bracket	Basic Installation Scenario
<p data-bbox="392 1043 746 1077">15 mm mounting bracket A</p> 	<p data-bbox="924 1043 1171 1088">Wall mounting </p> <p data-bbox="924 1099 1171 1144">T-rail mounting </p>

Standard Mounting Bracket	Basic Installation Scenario
<p>15 mm mounting bracket B</p> 	<p>Wall mounting </p> <p>T-rail mounting </p>
<p>7 mm mounting bracket</p> 	<p>Wall mounting </p>
<p>Small mounting bracket</p> 	<p>Wall mounting </p>

 **NOTE**

- This document briefly describes how to install the device using standard mounting brackets. To obtain installation guides for more scenarios and complete precautions, see [WLAN Hardware Installation and Maintenance Guide !\[\]\(cf5be311f7b2821912d8009884508fa2_img.jpg\)](#).
- You can also watch the [installation video !\[\]\(9804e70d96ff9fe9899b264c06a33cd7_img.jpg\)](#) to learn more about AP installation.

Applicable Models

- AirEngine 8771-X1T
- AirEngine 8760-X1-PRO
- AirEngine 8761-X1
- AirEngine 6760-X1
- AirEngine 6760-X1E
- AirEngine 6761-21E
- AirEngine 6761-22T
- AirEngine 6761-21T
- AirEngine 6761-21
- AirEngine 6761S-21
- AirEngine 6761S-21T
- AirEngine 5760-51
- AirEngine 5760-11DH
- AirEngine 5761-21
- AirEngine 5761-12
- AirEngine 5761-11
- AirEngine 5761S-21
- AirEngine 5761S-13
- AirEngine 5761S-12
- AirEngine 5761S-11
- AirEngine 5762-12
- AirEngine 5762-10
- AirEngine 5762S-12
- AirEngine 5762S-11
- AirEngine 5562-10
- AirEngine 3562-10
- AP365
- AP363
- AP362

2.2 Solid Wall Mounting

Context

A wall for installing the device needs to meet the following requirements:

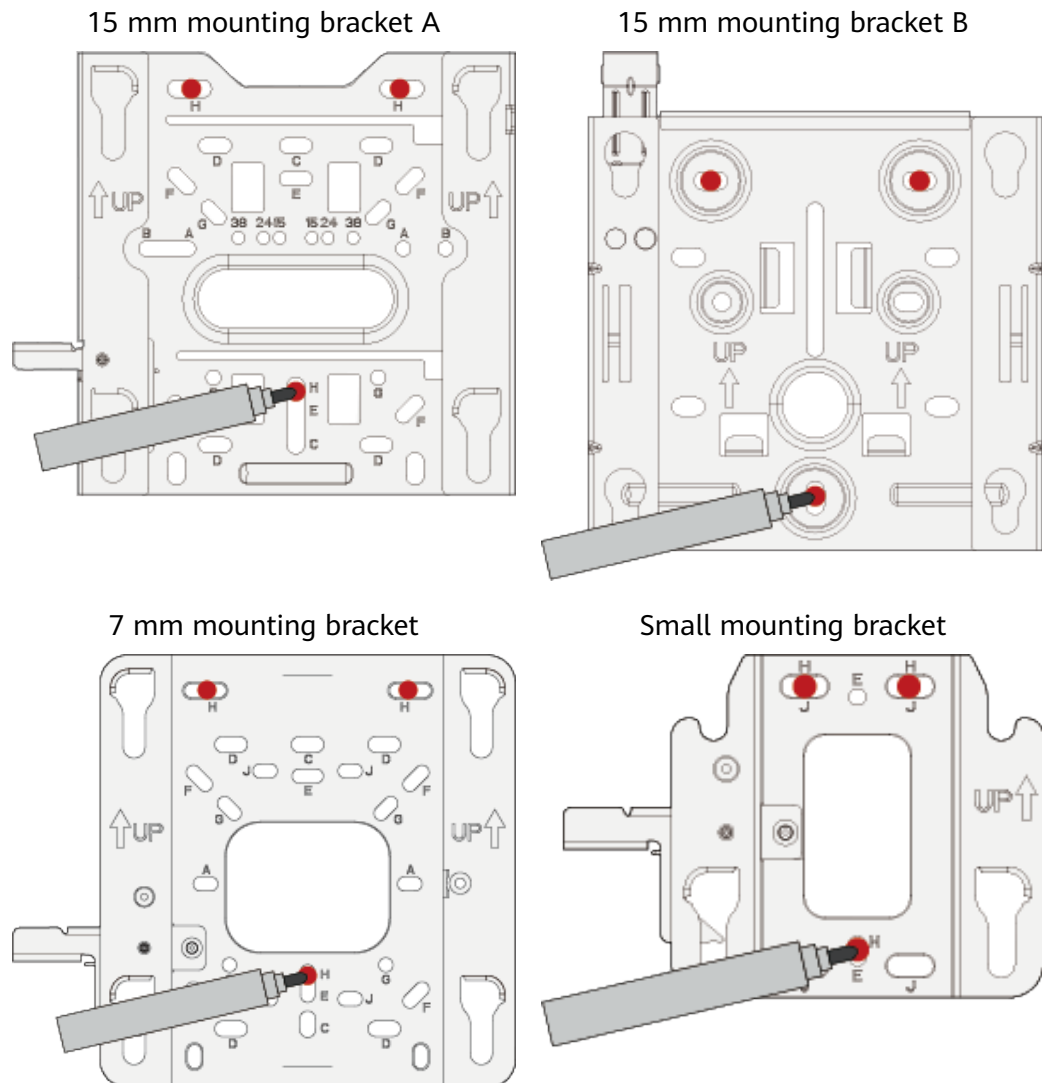
- The wall can bear the weight of four times the total weight of the device and mounting bracket without damage. When the total weight of the device and mounting bracket is less than 1.25 kg, the load-bearing capability of the wall must be greater than or equal to 5 kg.
- When the tightening torque of a screw reaches 3.5 N·m, the screw still properly works, without crack or damage on the wall.

Procedure

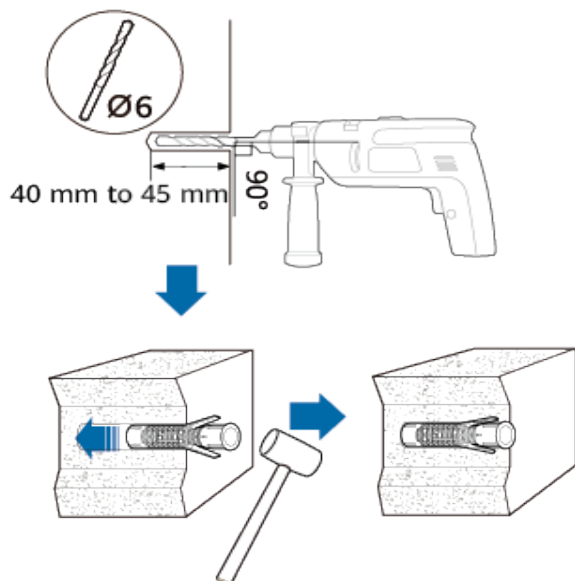
- Step 1** Attach the mounting bracket against the wall and mark positions of the mounting holes with a marker.

When adjusting the mounting bracket position, ensure that the arrows of image **UP↑** point upwards.

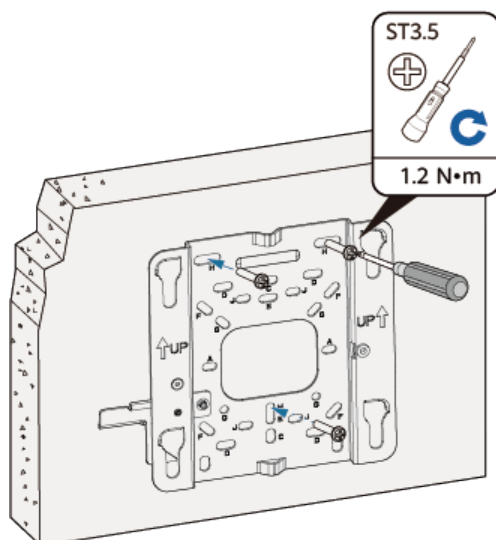
The following demonstrates the holes selected for different mounting brackets. The figures in the following steps use a 7 mm mounting bracket as an example.



- Step 2** Drill holes in the marked positions. Hammer the expansion tubes into the holes until the expansion tubes are flush with the wall.



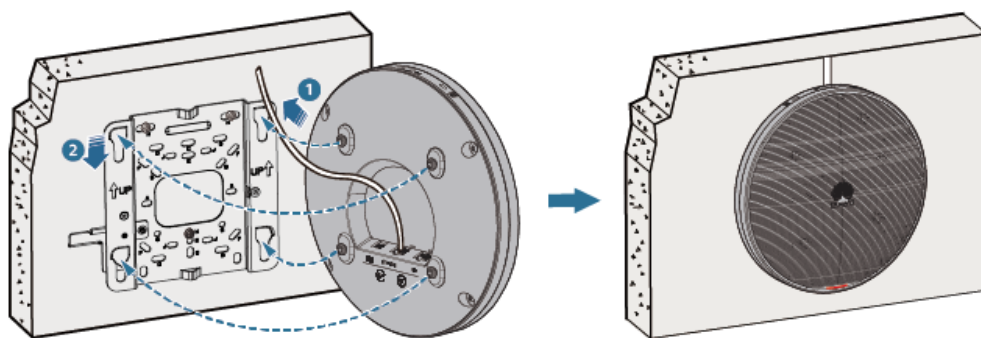
Step 3 Fix the mounting bracket to the wall and use the Phillips screwdriver to fasten three expansion screws into the expansion tubes.



Step 4 Connect cables.

Step 5 Fasten the device according to the figure. When you hear a click, the AP is secured to the lock position.

Before fastening the AP, ensure that the four rubber feet at the rear of the AP are aligned with the installation holes on the mounting bracket.



If the following SN and MAC barcode labels are attached to the AP, remove them from the AP, attach them to the construction report, and record the AP installation position for future O&M.



----End

Follow-Up Operations

- To learn about the deployment mode before service configuration, refer to [A.1 How Do I Configure WLAN Services?](#)
- To log in to the device, refer to [How to Log In to WLAN ACs and APs](#).
- To restore the factory settings, refer to [A.3 How Do I Restore Factory Settings?](#)

2.3 T-Rail Mounting (Using a 15 mm Mounting Bracket A)

Context


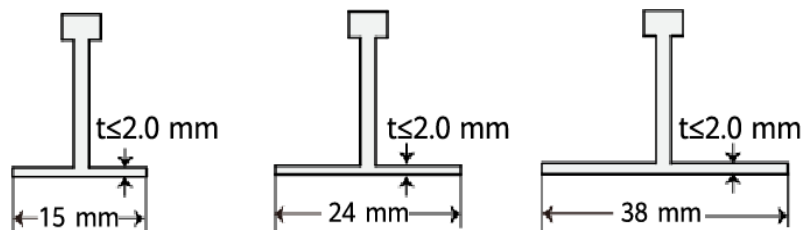
The 15 mm mounting bracket A is delivered together with flat-edge T-rail brackets ST-F1 and ST-F2, which can be directly secured to a 15 mm, 24 mm, or 38 mm flat-edge T-rail. The 7 mm and small mounting brackets are also applicable to T-rail mounting. However, you need to prepare steel wire ropes, lead them through the group J holes on the mounting bracket, and secure the mounting bracket to the T-rail. For details, see [WLAN Hardware Installation and Maintenance Guide](#) .

Figure 2-1 Supported flat-edge T-rails (cross sections)

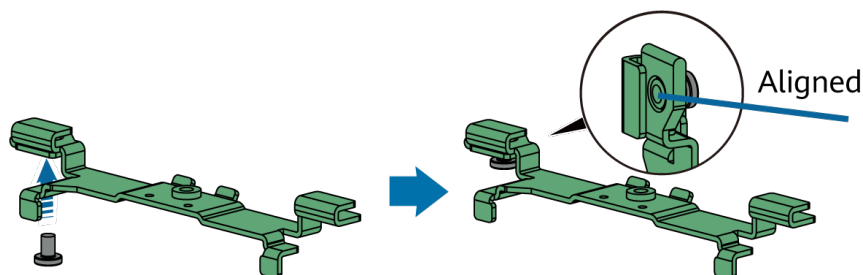


In this mounting mode, a T-rail for installing the device must be able to bear the weight four times the total weight of the device and mounting bracket without damage. For example, when the total weight of the device and mounting brackets is less than 1.25 kg, the load-bearing capability of the T-rail must be greater than or equal to 50 N.

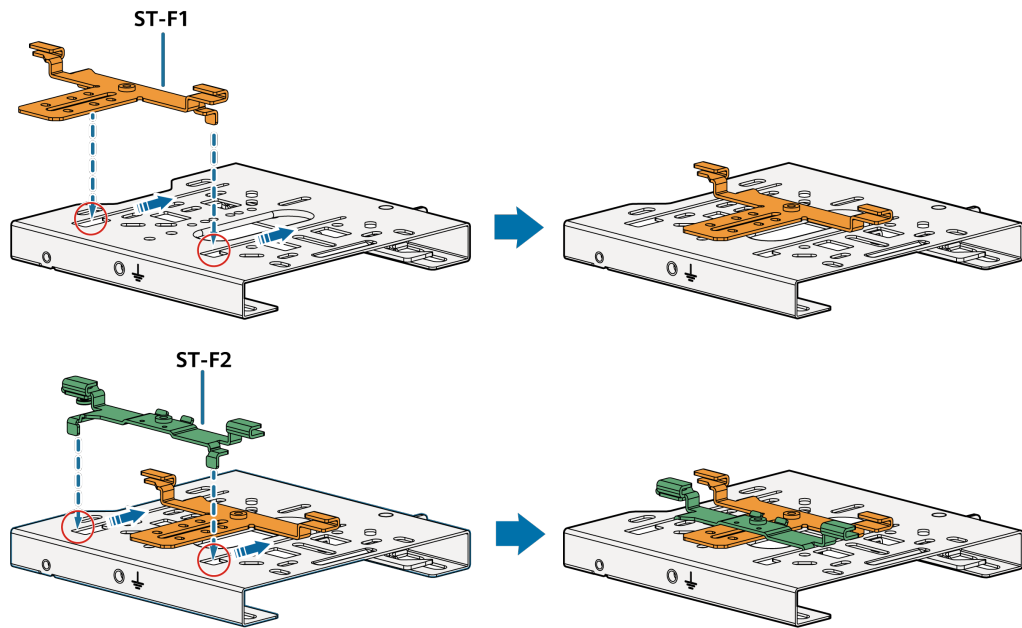
Procedure

The following uses a 24 mm flat-edge T-rail as an example to describe how to install an AP.

Step 1 Pre-tighten the M3x6.2 screw into T-rail bracket ST-F2.

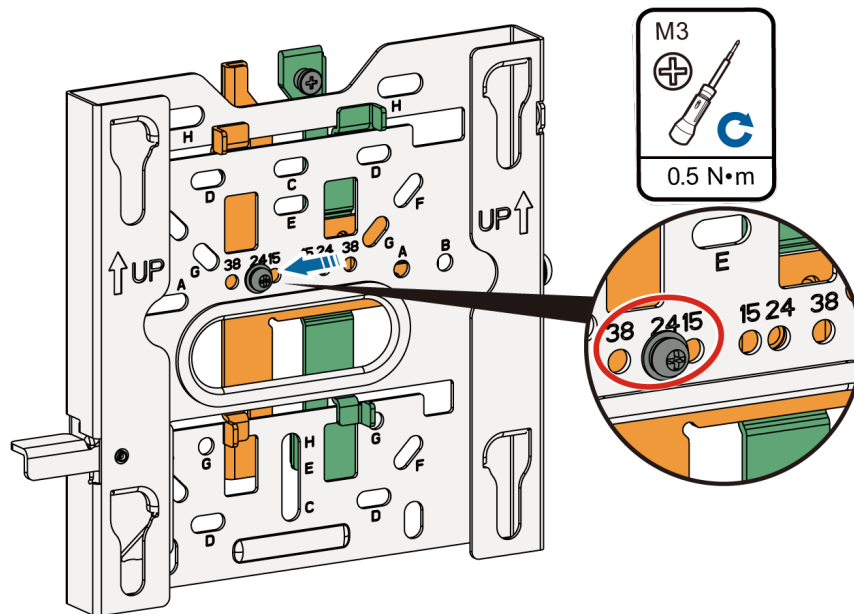


Step 2 Slide T-rail brackets ST-F1 and ST-F2 into the mounting bracket according to the sequence shown in the figure.

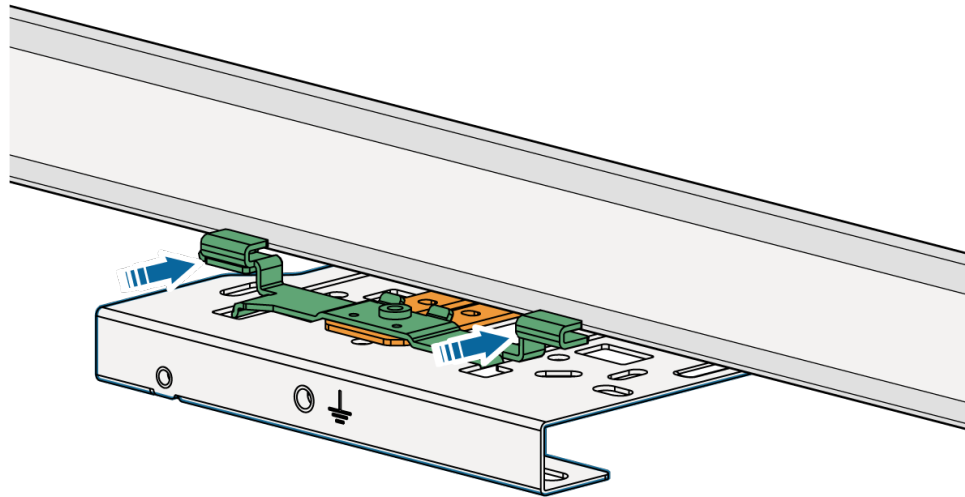


Step 3 Secure the M3x8 screw through hole 24 marked in the figure, and secure T-rail bracket ST-F1.

The T-rails of 15 mm and 38 mm correspond to holes 15 and 38 on the mounting bracket, respectively.

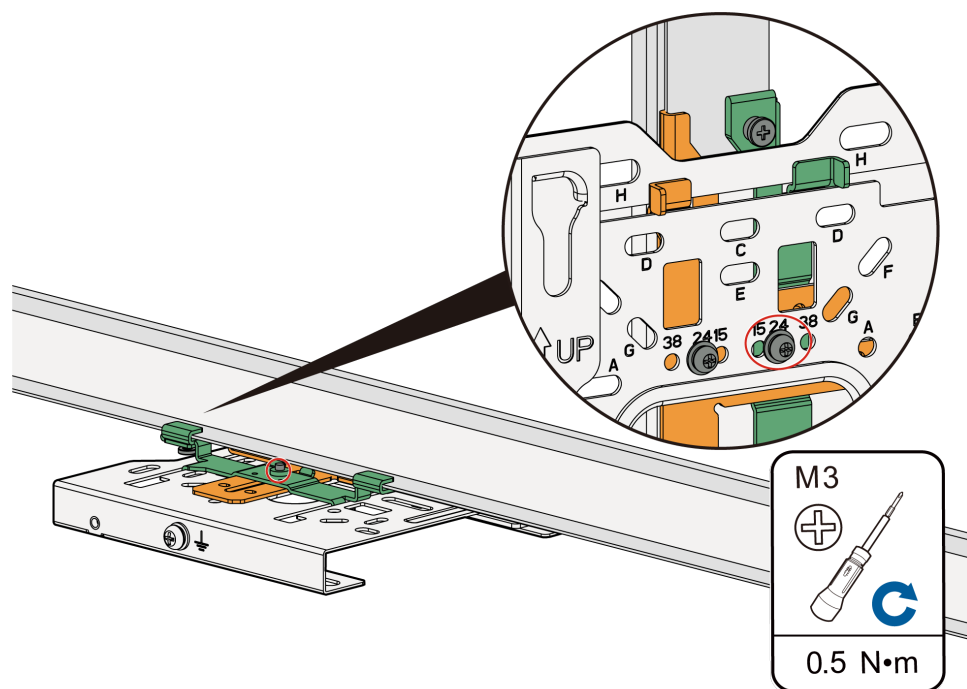


Step 4 Insert T-rail bracket ST-F1 into the T-rail, and slide T-rail bracket ST-F2 along the slot until the T-rail is tightened.

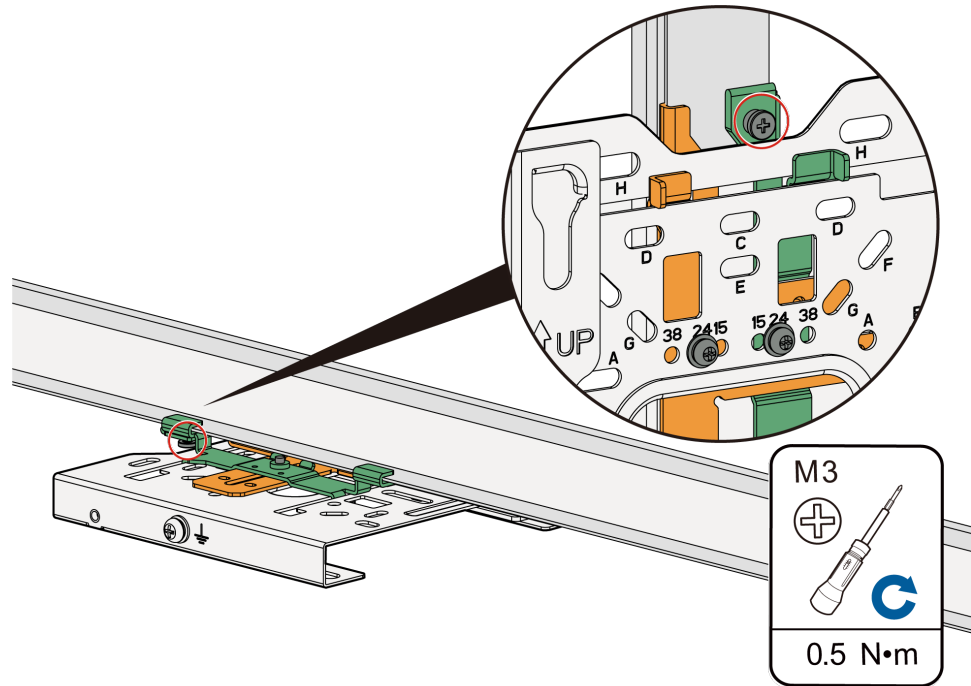


Step 5 Secure the M3x8 screw through hole 24 marked in the figure, and secure T-rail bracket ST-F2.

The T-rails of 15 mm and 38 mm correspond to holes 15 and 38 on the mounting bracket, respectively.



Step 6 Tighten the M3x6.2 set screw for installing the bracket.



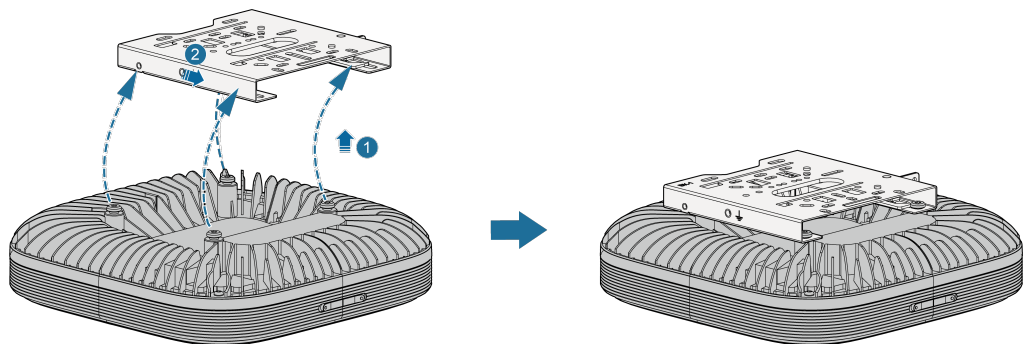
NOTE

After the security screw is tightened, the mounting bracket may be slightly deformed. This is normal and does not affect the AP use.

Step 7 Connect cables.

Step 8 Fasten the device according to the figure. When you hear a click, the AP is secured to the lock position.

Before fastening the AP, ensure that the four rubber feet at the rear of the AP are aligned with the installation holes on the mounting bracket.



If the following SN and MAC barcode labels are attached to the AP, remove them from the AP, attach them to the construction report, and record the AP installation position for future O&M.



----End

Follow-Up Operations

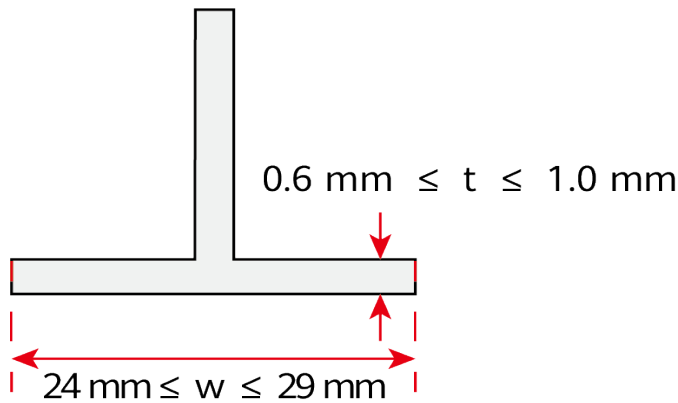
- To learn about the deployment mode before service configuration, refer to [A.1 How Do I Configure WLAN Services?](#)
- To log in to the device, refer to [How to Log In to WLAN ACs and APs](#).
- To restore the factory settings, refer to [A.3 How Do I Restore Factory Settings?](#)

2.4 T-Rail Mounting (Using a 15 mm Mounting Bracket B)

Context

The 15 mm mounting bracket B is delivered with a sliding plate, which can be directly secured to the flat-edge T-rail of the following specifications, as shown in the following figure.

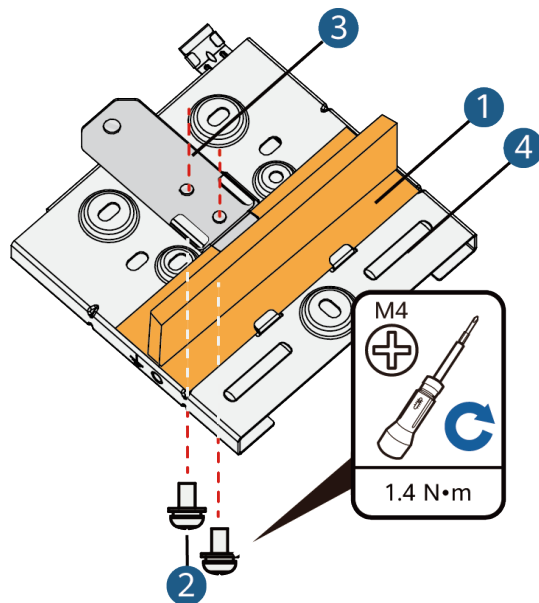
Figure 2-2 Supported flat-edge T-rail (cross section)



In this mounting mode, a T-rail for installing the device must be able to bear the weight four times the total weight of the device and mounting bracket without damage. For example, when the total weight of the device and mounting brackets is less than 1.25 kg, the load-bearing capability of the T-rail must be greater than or equal to 50 N.

Procedure

- Step 1** Remove the two ceilings near the T-rail. Use screws to pre-tighten the sliding plates to the mounting bracket, and then adjust the sliding plate to secure the T-rail between the sliding plate and the metal buckle on the mounting bracket. Tighten the screw on the sliding plate.

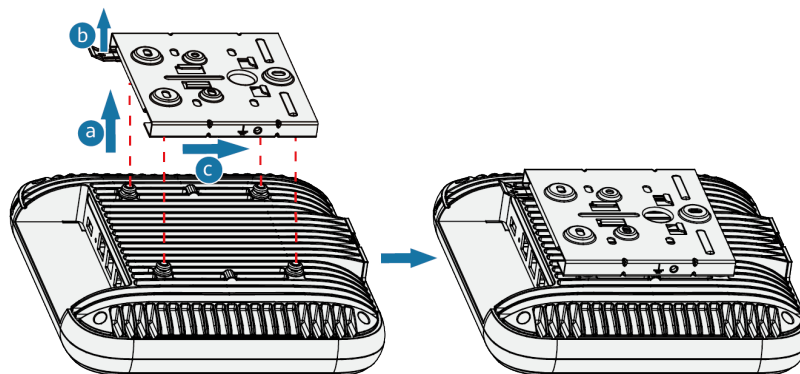


1. T-rail	2. M4x8 screw	3. Sliding plate	4. Mounting bracket
-----------	---------------	------------------	---------------------

- Step 2** Connect cables.

- Step 3** Align the rubber feet of the AP over the mounting holes on the mounting bracket and vertically push the AP. When the device presses up the release lever, push the

device horizontally. When you hear a click, the AP is secured to the mounting bracket.



If the following SN and MAC barcode labels are attached to the AP, remove them from the AP, attach them to the construction report, and record the AP installation position for future O&M.



----End

Follow-Up Operations

- To learn about the deployment mode before service configuration, refer to [A.1 How Do I Configure WLAN Services?](#)
- To log in to the device, refer to [How to Log In to WLAN ACs and APs](#).
- To restore the factory settings, refer to [A.3 How Do I Restore Factory Settings?](#)