

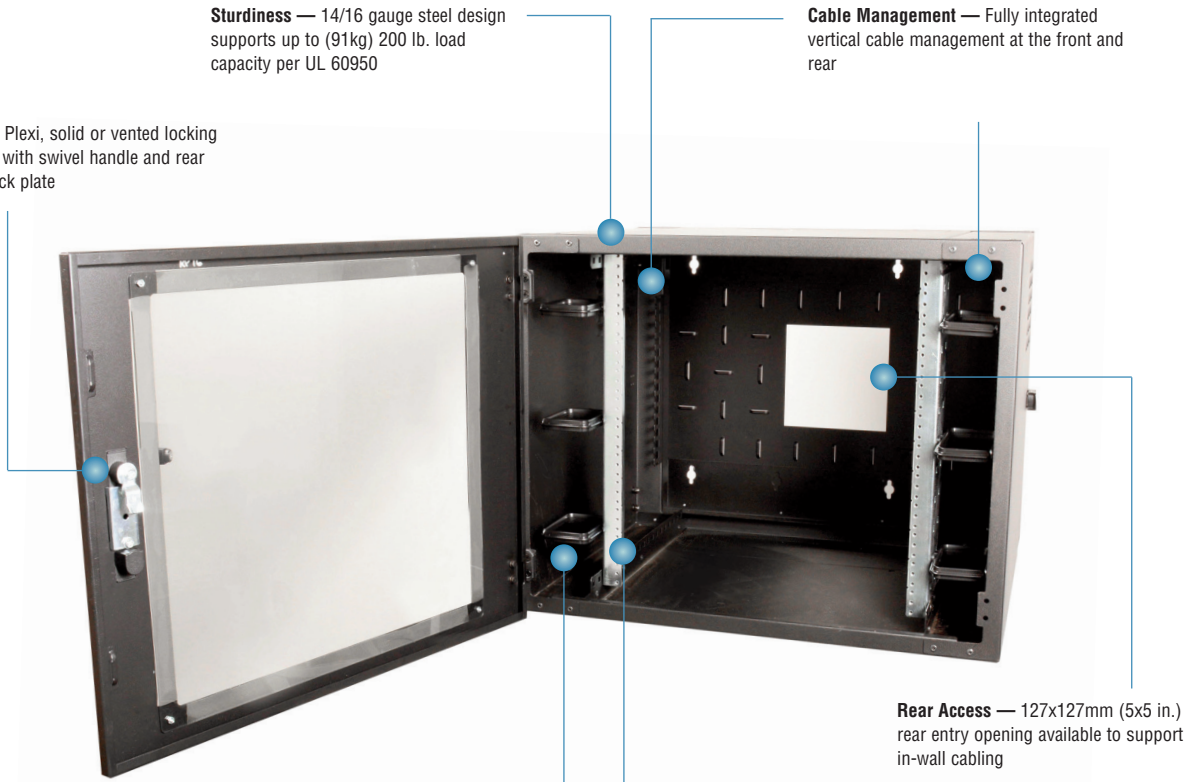
Wall Mount Cabinet

Siemon's feature-rich Wall Mount Cabinet saves valuable floor space while providing a cost-effective means to secure and protect network equipment from dust, tampering, and other hazards. Designed with excellent cable management, easy rear access and a fully adjustable mounting rail system, the Wall Mount Cabinet is extremely versatile for a wide range of applications. It is ideal as a mini telecommunications room or for remote network distribution and consolidation points in open, unprotected spaces such as warehouses, retail facilities and schools. This EIA/ECA and UL 60950-compliant Wall Mount Cabinet is also ideal for zone cabling in intelligent building applications, passive optical networks, or wherever more expensive full-size cabinets are not required. It is compatible with Siemon VersaPOD® fan kits, rack-mount PDUs, shelves and other accessories.

Secure — Plexi, solid or vented locking front door with swivel handle and rear locking back plate

Sturdiness — 14/16 gauge steel design supports up to (91kg) 200 lb. load capacity per UL 60950

Cable Management — Fully integrated vertical cable management at the front and rear



Multiple Sizes —
 Heights: 12U, 18U, 24U
 Depths: 610mm and 762mm (24 in. and 30 in.)
 Width: 736mm (29 in.)

Adjustability — Fully adjustable EIA compliant mounting rail system with #12-24 tapped holes

** Front mounting rail only, rear rails may be ordered separately*

Rear Access — 127x127mm (5x5 in.) rear entry opening available to support in-wall cabling



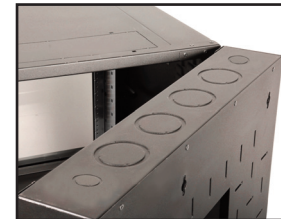
Accessibility — Easy rear access to equipment and wiring with right- or left-hinged back plate design



Front Cable Management — Integrated vertical cable management at front of cabinet provides means to route patch cords vertically within cabinet

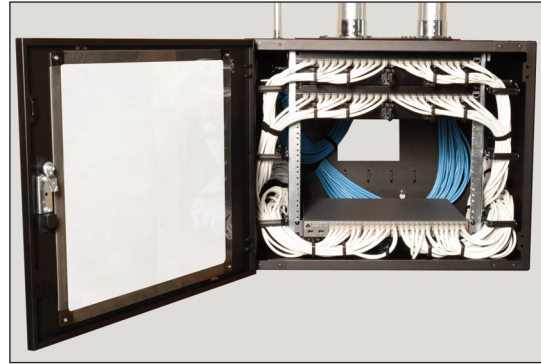
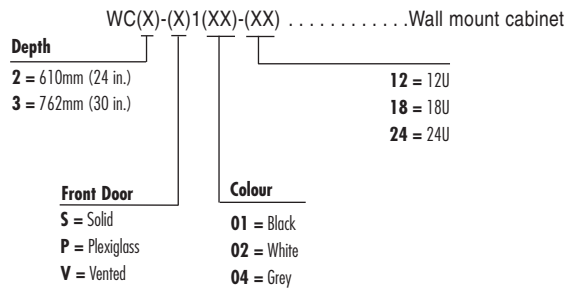


Intelligent Ready — Standard swing handle can be easily retrofitted with 3rd party card or biometric handles for high security applications



Cable Entry — (4) concentric 63.5 / 76.2mm (2.5 / 3 in.) and (2) 19mm (0.75 in.) cable entry knockouts at the top and bottom of the back plate

Ordering Information:



Wall Mount Specifications

Height	12U: 584mm (23 in.) 18U: 864mm (34 in.) 24U: 1118mm (44 in.)
Width	737mm (29 in.)
Depth - External (Door to Door)	WC2: 610mm (24 in.) WC3: 762mm (30 in.)
Depth - Usable (Rail-to-Rail Max.)	WC2: 394mm (15.5 in.) WC3: 546mm (21.5 in.)
Weight *	WC2 12U: 36kg (80 lbs.) WC2 18U: 48kg (105 lbs.) WC2 24U: 59kg (130 lbs.) WC3 12U: 45kg (100 lbs.) WC3 18U: 57kg (125 lbs.) WC3 24U: 68kg (150 lbs.)
Load Rating	Static: 91kg (200 lbs.)
Colour	Graphite Black (RAL 9011), Signal White (RAL 9003), Light Grey (RAL 7035)
% Door Perforation	41%
U Space Identification	Equipment Rail Notches
Lid Cable Access Openings	6 small
Material	14/16 gauge steel
Finish	Textured powder coat
Standards Compliance	EIA/ECA-310-E UL 60950 NEMA Type 1 Enclosure IP20 Rated

* Does not include packaging

Wall Mount Cabinets are also available as Siemon's V-Built® Customised Preconfigured Cabinet Solutions, where each cabinet is identified by one unique customer-specific part number, preloaded with Siemon components and packaged at one of our regional Siemon manufacturing facilities. This speeds deployment time and reduces on site packaging waste. Contact Siemon for more information.

Wall Mount Cabinet Accessories

- VP-FAN Top-mount cooling fan panel, 2 fans x 110CFM, 120VAC w/NEMA 5-15P plug
- VP-FAN-220 Top-mount cooling fan panel, 3 fans x 110CFM, 220VAC w/C13 plug
- VP-GRD Grounding kit - Includes ground bar, ground wire, mounting hardware, and accessories (capacity to support all required grounding connections for a single cabinet)
- WC-R-(X)-(XX) Wall mount cabinet mounting rails (set of 2)
Use (X) to specify color. 1 = black, 2 = white, 4 = gray
Use (XX) to specify height. 12 = 12U, 18 = 18U, 24 = 24U
- WC-FLTRKIT-(XX) Wall mount cabinet louver filter and bracket (set of 2)
Use (XX) to specify color. 01 = black, 02 = white, 04 = gray
- WC-REPFLTR Wall mount cabinet replacement filter for louver filter kit