

Solution 6™ UTP Cable

Regional Availability - North America

Solution 6 cable meets or exceeds all ANSI/TIA and ISO/IEC category 6 transmission performance specifications. Combine our high performance category 6 connectivity with Solution 6 cable and the result is a system with excellent electrical performance for optimum applications support.

The Solution 6 cable design eliminates the central isolation member common to many category 6 UTP cables, reducing overall cable diameter. This reduces pathway size requirements, carton materials, connector termination times, and provides more efficient shipping options for a greener installation.

Cable Features

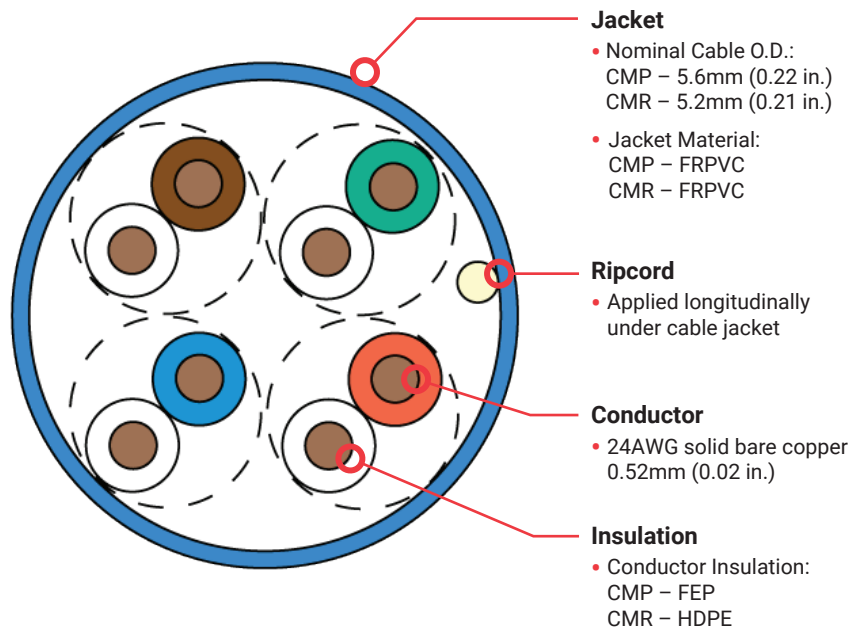
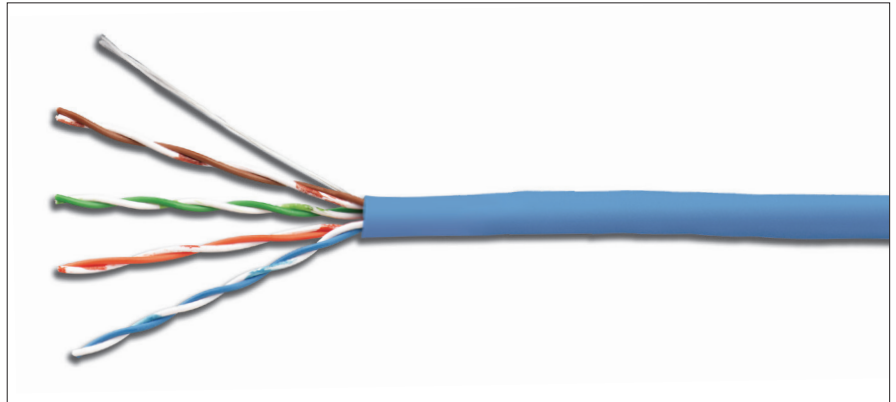
- CMP Nominal Jacket OD: 5.6mm (0.22 in.)
- CMR Nominal Jacket OD: 5.2mm (0.21 in.)
- 24 AWG 0.52mm (0.02 in.) solid (non-tinned) copper
- Reverse sequential numbering
- Round jacket
- Jacket material is lead free
- 75°C temperature rating

Standards Compliance

- ISO/IEC 11801-1 Ed 1.0
- IEC 61156-5
- TIA-568.2-D
- UL CMP
- UL CMR
- RoHS

Applications Support

- 1000BASE-T
- 100BASE-T
- 10BASE-T
- IEEE 802.3af (Type 1 PoE)
- IEEE 802.3at (Type 2 PoE)
- IEEE 802.3bt (Type 3 PoE)
- IEEE 802.3bt (Type 4 PoE)
- Power over HDBaseT (PoH)



Product Information

Electrical Specifications

DC Resistance	<8.8Ω/100m
DC Resistance Unbalance	5%
Mutual Capacitance	5.2 nF/100m
Capacitance Unbalance	<330 pF/100m
NVP	67%
TCL	30-10 log(f/100) dB
Delay Skew	≤45ns

Physical Properties

Pulling Tension (max)	110N (25 lbf)
Bend Radius (min)	25mm (1 in.)
Installation Temperature	0 to 50°C (+32 to 122°F)
Storage Temperature	-20 to 75°C (-4 to 167°F)
Operating Temperature	-20 to 75°C (-4 to 167°F)

Transmission Performance

Guaranteed Worst Case
 Siemon Typical

Frequency (MHz)	Insertion Loss (dB/100)		NEXT (dB)		PS NEXT (dB)		ACR-F (dB)		PSACR-F (dB)		Return Loss (dB)		ACR-N (dB)		PSACR-N (dB)		Propagation Delay (ns)	
	Guaranteed Worst Case	Siemon Typical	Guaranteed Worst Case	Siemon Typical	Guaranteed Worst Case	Siemon Typical	Guaranteed Worst Case	Siemon Typical	Guaranteed Worst Case	Siemon Typical	Guaranteed Worst Case	Siemon Typical	Guaranteed Worst Case	Siemon Typical	Guaranteed Worst Case	Siemon Typical	Guaranteed Worst Case	Siemon Typical
1.0	2.0	1.9	74.3	90.8	72.3	87.4	67.8	79.8	64.8	79.4	20.0	27.8	72.3	88.9	70.3	85.5	570	516
4.0	3.8	3.6	65.3	77.8	63.3	74.4	55.8	68.3	52.8	67.7	23.0	31.4	61.5	74.2	59.5	70.8	552	500
10.0	6.0	5.7	59.3	70.2	57.3	68.4	47.8	60.5	44.8	59.7	25.0	31.5	53.3	64.5	51.3	62.7	545	494
16.0	7.6	7.3	56.2	65.5	54.2	63.0	43.7	56.5	40.7	55.6	25.0	33.2	48.7	58.3	46.7	55.8	543	492
20.0	8.5	8.2	54.8	64.9	52.8	62.7	41.8	54.6	38.8	53.6	25.0	31.6	46.3	56.8	44.3	54.6	542	491
31.25	10.7	10.2	51.9	60.2	49.9	57.0	37.9	51.0	34.9	49.8	23.7	31.4	41.3	50.1	39.3	46.9	540	489
62.5	15.4	14.7	47.4	55.9	45.4	55.1	31.9	46.1	28.9	45.6	21.5	33.5	32.0	41.5	30.0	40.4	539	488
100.0	19.8	18.8	44.3	52.5	42.3	50.4	27.8	42.8	24.8	41.5	20.1	30.5	24.5	34.2	22.5	32.0	538	487
160.0	25.6	24.1	41.2	51.8	39.2	50.4	23.7	43.8	20.7	40.6	18.7	32.3	15.6	27.9	13.6	26.4	537	486
200.0	29.0	27.1	39.8	49.1	37.8	47.2	21.8	37.1	18.8	35.7	18.0	30.3	10.8	22.5	8.8	20.2	537	486
250.0	32.8	30.6	38.3	45.1	36.3	43.5	19.8	33.1	16.8	30.9	17.3	34.7	5.5	15.1	3.5	13.5	536	485
300.0*	-	34.7	-	43.8	-	42.1	-	27.9	-	27.3	-	28.6	-	10.0	-	7.6	-	485
400.0*	-	40.7	-	42.8	-	40.4	-	27.5	-	27.0	-	23.6	-	3.1	-	-0.2	-	485
500.0*	-	46.0	-	41.5	-	39.8	-	30.4	-	29.5	-	28.5	-	-3.5	-	-5.2	-	485
550.0*	-	48.7	-	42.8	-	39.7	-	27.2	-	26.6	-	22.0	-	-5.4	-	-	-	485

*Values for frequencies above industry requirements are for information only. All performance based on 100 meters (328 ft.).

Ordering Information

Part Number

Description

9C6P4-E2-(XX)ARXA	Plenum (CMP, CSA FT6) 305m (1000 ft.) Reelex
9C6R4-E2-(XX)-RXB	Riser (CMR, CSA FT4) 305m (1000 ft.) Reelex

Use (XX) to specify color: 01 = black, 02 = white, 03 = red, 04 = gray, 05 = yellow, 06 = blue, 07 = green, 08 = violet, 09 = orange
Minimum order quantity may apply to select colors.

Because we continuously improve our products, Siemon reserves the right to change specifications and availability without prior notice.

North America
P: (1) 860 945 4200

Asia Pacific
P: (61) 2 8977 7500

Latin America
P: (571) 657 1950/51/52

Europe
P: (44) 0 1932 571771

China
P: (86) 215385 0303

India, Middle East & Africa
P: (971) 4 3689743

Siemon Interconnect Solutions
P: (1) 860 945 4213
www.siemon.com/SIS

Mexico
P: (521) 556 387 7708/09/10

