

Network Repeater

IFP-RPT-UTP / IFP-RPT-FO

The IFP-2000 network repeater modules are used when panels to be networked are located further than 20 feet apart or when panels are located in multiple buildings.

The IFP-RPT is available for use in two versions:

- IFP-RPT-FO
- IFP-RPT-UTP

The IFP-RPT-UTP repeater is used to network panels using twisted pair copper wiring.

The IFP-RPT-FO repeater is used to network panels using either multimode 62.5/125 micron fiber optic cable or twisted pair copper wiring.

Installation

The IFP-RPT-UTP and IFP-RPT-FO can mount directly inside the control panel cabinet, or, the repeaters can be mounted using an accessory kit. The kits include a small cabinet with door, key, mounting hardware, five foot ribbon cable to connect the repeater to the control panel and the repeater printed circuit board. For specific installation instructions refer to the IFP-2000 installation manual part number 151430.

The accessory kit part numbers are:

IFP-RPT-UTP-KIT - Wired twisted pair network repeater card and cabinet kit.

IFP-RPT-FO-KIT- Fiber optic network repeater card and cabinet kit.

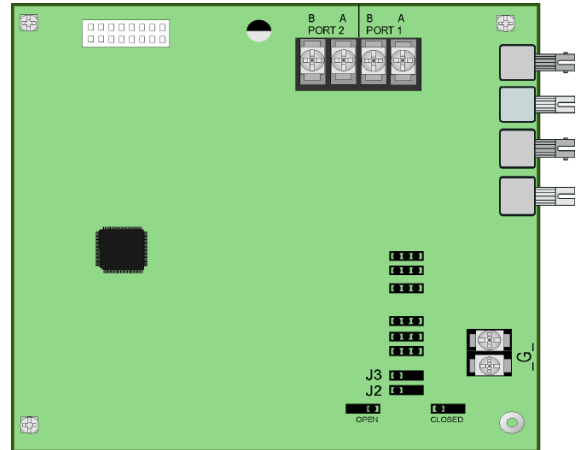
Specifications

Operating Voltage: 24 VDC (provided from IFP-2000)
Operating Current: 0.013 amp
Operating Temperature: 32° to 120° F (0° to 49° C)
Relative Humidity: 0 to 93% RH, non-condensing

Agency Listings



City of
New
York



Network Repeater

Features

- Listed under UL 864 9th Edition.
- Supports BUS or class A (style 7) wiring topologies.

Ordering Information

IFP-RPT-UTP	Wired twisted pair network repeater card.
IFP-RPT-FO	Fiber optic network repeater card.
IFP-RPT-UTP-KIT	Wired twisted pair network repeater card and cabinet kit.
IFP-RPT-FO-KIT	Fiber optic network repeater card and cabinet kit.

Accessory Part

75687	16 pin IDC ribbon cable. 20" L
-------	-----------------------------------