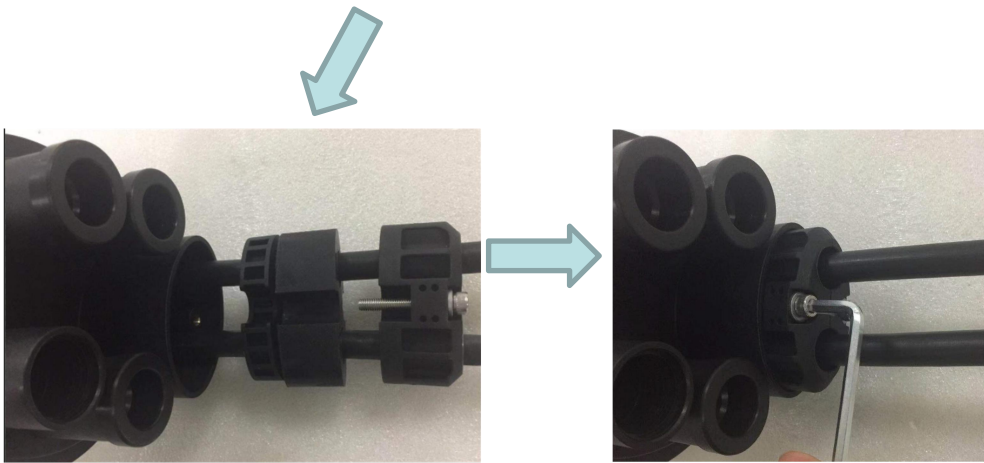
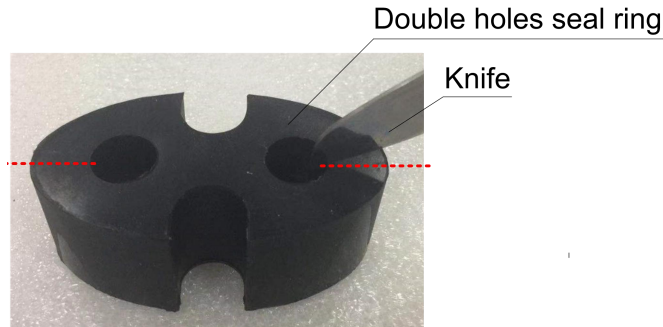


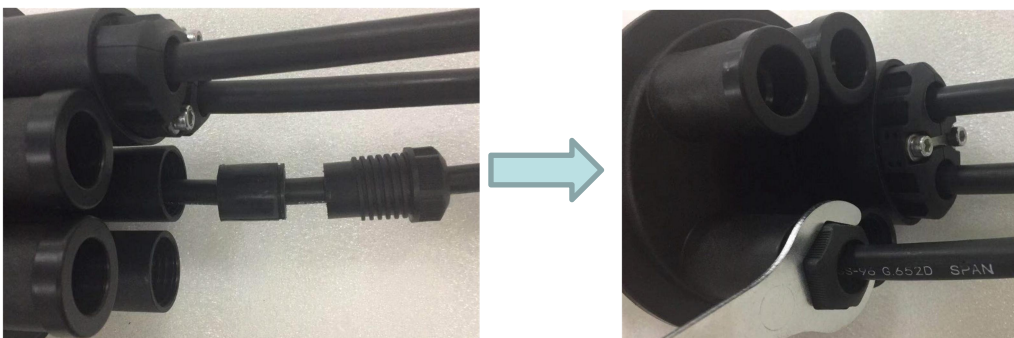
Feeder cable sealing

Cut the both sides of the double holes seal ring with a knife, install the sealing assembly on the mid-span cable in order, then install them into the mid-span cable port.



Distribution cable sealing

Install the sealing assembly on the distribution cable in order, then install them into the distribution cable port.



- ① Strip the cut feeder cable, access it into the splicing tray with bare fiber protective tube, splice the fibers of the main cable and distribution cable in the splice tray directly.

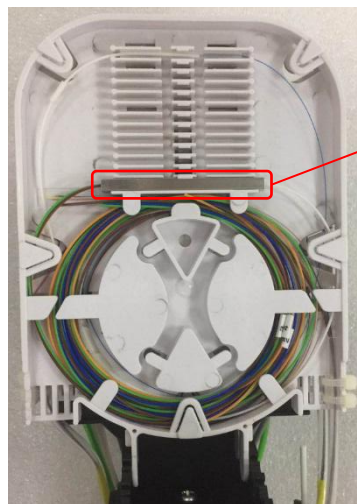


Mid-span



Direct splice

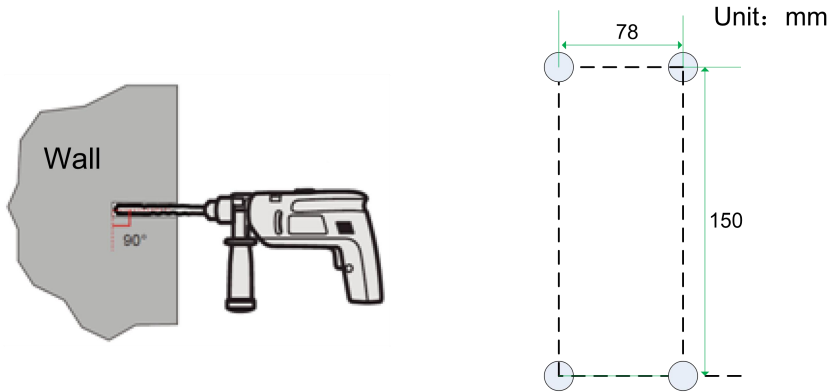
- ② If necessary, the splitter can be mounted in the tray with the special slot. The input and output of the splitter are spliced with bare fibers of the feeder cable and the distribution cable, respectively.



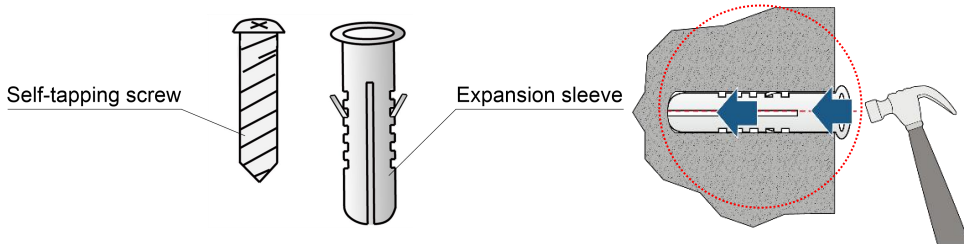
Splitter

Wall-mounted

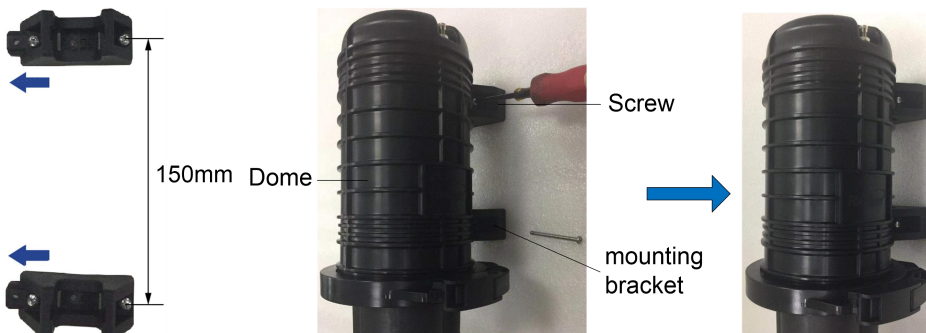
- b** Drill 4 holes on the wall by using a percussion drill at the marked points.



- a** Hammer the plastic expansion sleeve completely into the drilled holes.



- c** Fit the mounting bracket on the wall with screw, then fix the dome on the mounting bracket with screw



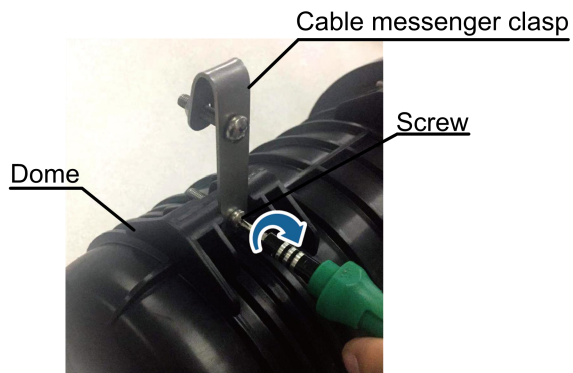
■ Pole-mounted

- a Put the hoop in the mounting bracket.
- b Fit the dome to the pole with the hoop.



■ Cable messenger-mounted

- a Install the clasps onto the 2 mounting holes at the back of the box.



- b Hang the box onto the cable messenger and then secure it with the screws.

